



2017 CHIP AND SEAL PROGRAM

STREET MAINTENANCE

On July 17th - 20th & 24th - 27th, the City of Missoula will be applying *CHIP SEAL* to streets Monday -Thursday, from 7:00am –5:00pm

CHIP SEAL is a combination of an asphalt oil sealant and small “chip” rock.

CHIP SEALING a street is like painting a house in that it seals out the moisture while protecting the surface of the street and helps prevent potholes.

CHIP SEAL is only one quarter of the cost of a new asphalt surface, which allows the City to maintain more streets when applying chip and seal.

While applying the *CHIP SEAL*, the street in front of your house may experience traffic delays. **The loose “chip” rock will be left on the street for two to three weeks until street sweeping is completed.** For the next year, the street will have a rough surface due to the “chips” and will also have some loose “chip” rock which will eventually be cleaned up.

The CITY requests the following:

DO NOT run sprinklers so the street becomes wet the day before or the day of chip sealing. The street must be dry.

DRIVE SLOWLY the first two days.

REFRAIN from making excessively sharp turns.

PARK AWAY from the streets being CHIP SEALED.

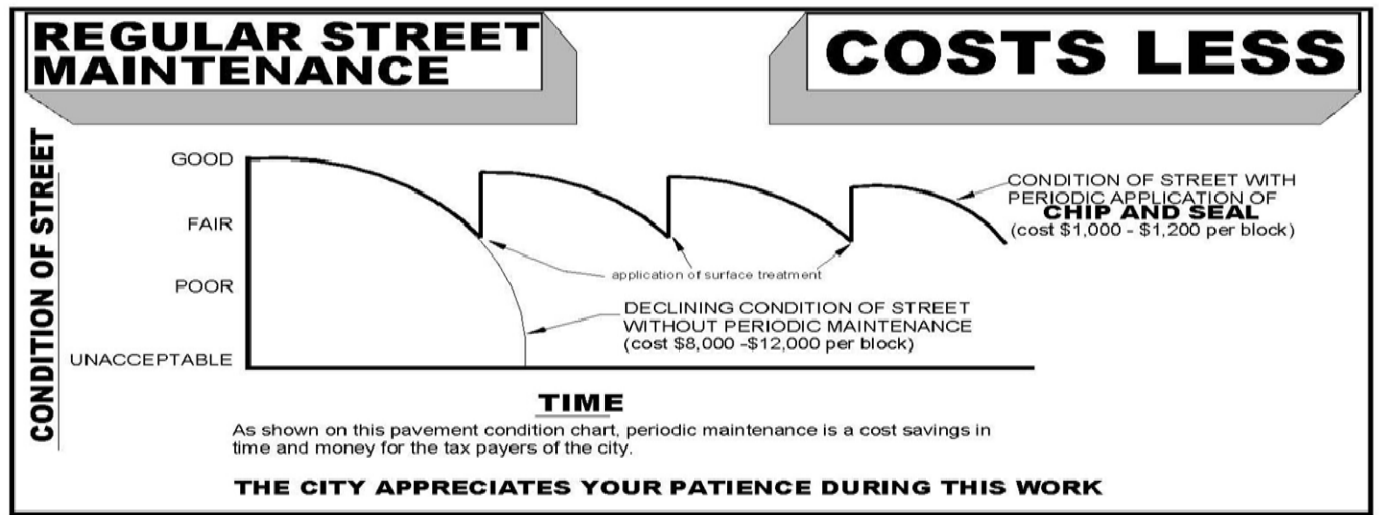
Remaining cars will be towed, usually within one block of original location.

ALERT:

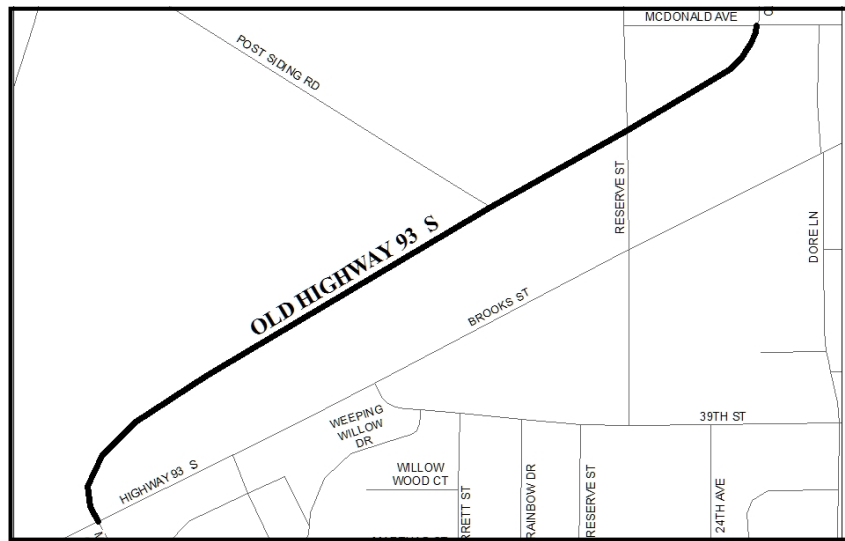
- If you walk on the oil before the chips have been applied, you may wish to remove your shoes before entering a house or car. This oil is nearly impossible to remove from rugs or carpet. Business and homeowners may want to cover rugs in entryways for a couple of weeks to avoid oil being tracked in.
- Trees must be pruned to a minimum of 14 feet over street to the inside edge of the curb line, per MMC 12.32. If your trees do not meet this requirement they may be trimmed by the city.
- Weather and/or workload could change the scheduling. Street Maintenance crews will knock on doors prior to start of work on each street.

The streets benefiting from chip seal are listed below in a tentative order in which they will be completed. See reverse side for a map of each location.

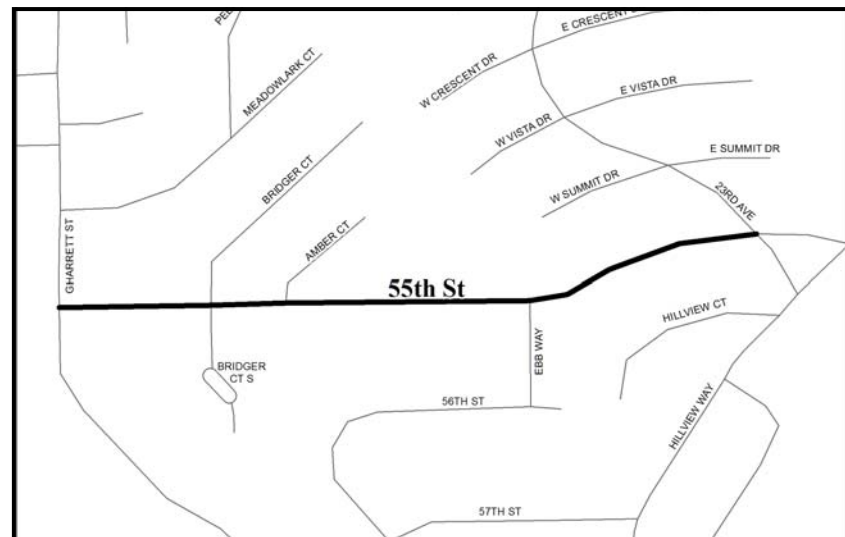
<u>Street</u>	<u>Location</u>
Old Highway 93	Brooks St. to McDonald Ave.
Garland Dr.	Gharrett St. to Reserve St.
Cloverdale Dr.	All
Spring Ct.	All
Hillview Way	39th St. to Alliance Way
E Sussex Ave.	S Higgins Ave. to Maurice Ave.
E Central Ave.	Arthur Ave. to Maurice Ave.
E Kent Ave.	Arthur Ave. to Maurice Ave.
North Ave. E	Arthur Ave. to Maurice Ave.
Woodworth Ave.	Arthur Ave. to Madeline Ave.
Beverly Ave.	Arthur Ave. to Madeline Ave.
Hastings Ave.	Arthur Ave. to Madeline Ave.
Evans Ave.	Arthur Ave. to Madeline Ave.
E Beckwith Ave	Arthur Ave. to Madeline Ave.
Madeline Ave.	Beverly Ave. to E Beckwith Ave.
Mansfield Ave.	E Beckwith Ave. to Woodworth Ave
Maurice Ave.	E Beckwith Ave. to South Ave. E
Arthur Ave.	Beverly Ave. to South Ave. E
Helen Ave.	S 6th St E to South Ave. E
Hilda Ave.	S 6th St E to South Ave E
Ronald Ave.	S 6th St E to South Ave. E
Gerald Ave.	University Ave. to South Ave E



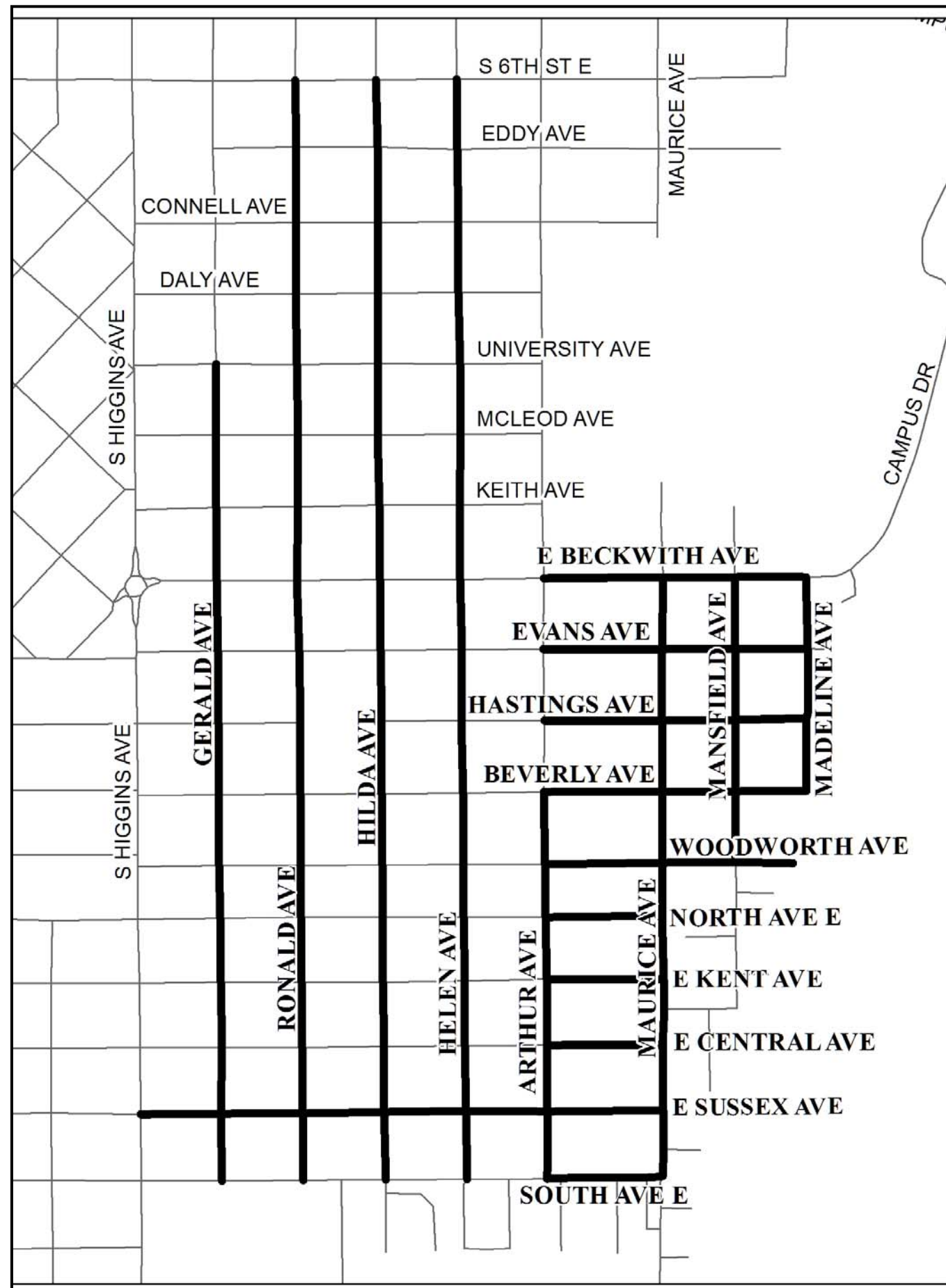
If you have any questions or problems, please contact the City Street Division at 552-6360. Office Hours are Monday – Thursday, 7:00am – 5:00pm.



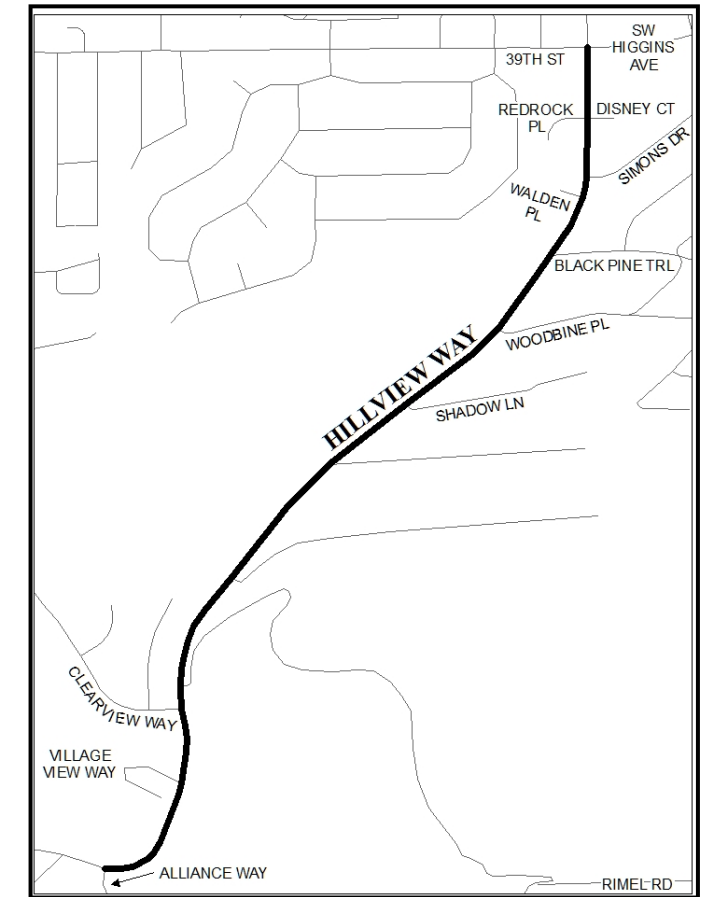
Old Highway 93



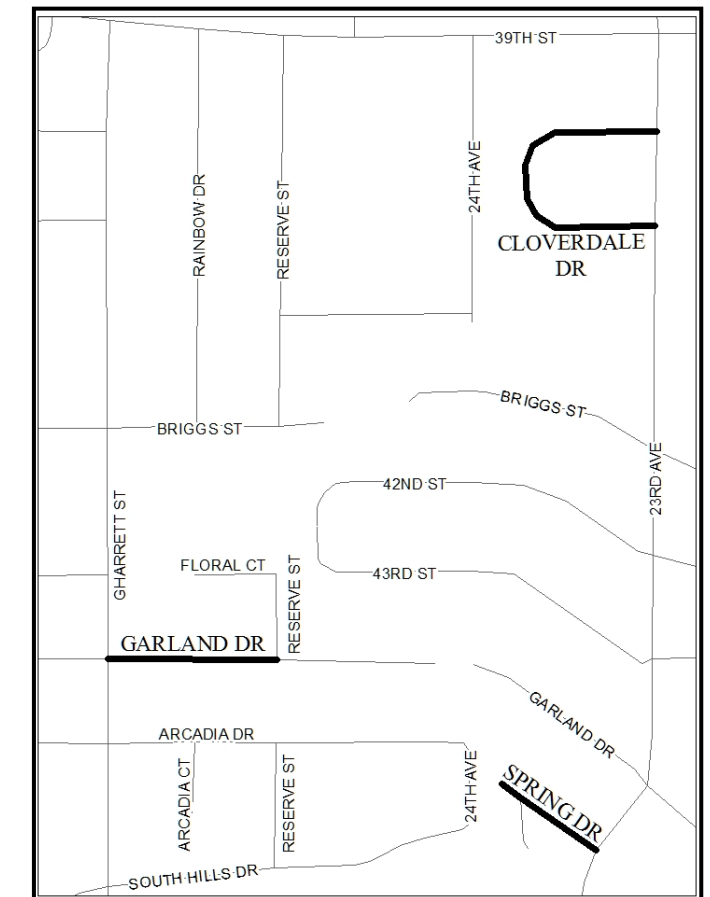
55th St



University District



Hillview Way



Cloverdale Dr. / Spring Dr. / Garland Dr.