

Missoula Neighborhoods



COLIN WOODROW
NEIGHBORHOOD COORDINATOR

WWW.MISSOULA-NEIGHBORHOODS.ORG

1972 Montana Constitutional Convention



- 100 delegates elected
- Varied backgrounds
- 24 lawyers, 19 farmers, 14 educators, 11 housewives, 5 ministers, 1 FBI agent, 1 beekeeper
- 19 women—most to ever sit in a state constitutional convention; ages 24-73

Women of the Convention



Themes of the Convention



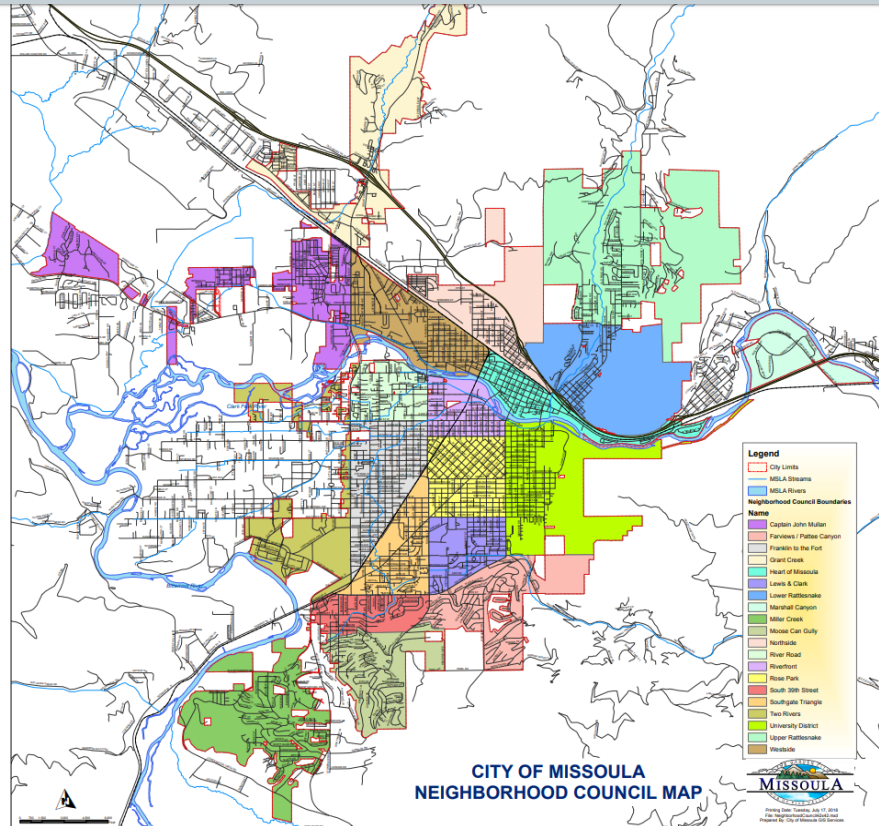
- Improve education
- Protect the environment
- Guarantee equal rights to all
- Ensure a strong responsive government
- Guarantee the public's right to know and be involved in government
- Extend home rule (increased self-government for cities and counties)

Local Government Study Commission



- Primary election-local government review?
- If yes-candidates run in November election for member commission
- 1994 began studying
- June 4, 1996 approved City Charter
 - Missoula self governing with a charter
 - Neighborhood Council system as part of City government
 - City elections nonpartisan

Neighborhood Council System



Neighborhood Councils



- Leadership team—5 to 7 members elected (one CF member)
- Meet yearly minimum
- Budget-\$800 plus mailing supplement
- Elected officials—open meeting and public participation laws

Neighborhood Councils



Purpose:

- **Strengthen neighborhood participation**
- **Advise City Council and the Mayor**
- **Provide a structure for increased participation**
- **Build cooperation**
- **Improve communications**

Community Forum



Purpose of CF:

- Forum for NCs to come together—1 rep each NC
- Share information
- Make recommendations on city-wide issues

NCs and CF and the City shall work together in partnership, bridging the gap between citizens and government

Office of Neighborhoods



- Outstanding Neighborhood Volunteer
 - Dave Chrisman—individual
 - Thoughtful Neighbors aka Ice Cream Socialists—group
- Candidates' Forums
- Training
- Weekly digest

Annual Bus Tour



Neighborhood Project Funds



- Expanding Neighborhood Toolbox at Free Cycles
- Traffic Signal Box Artwork
- Play it Missoula! Piano Project
- Playgrounds
- Pocket Parks/Trees
- Art Park Water Station
- Murals
- Trails
- Improved Amenities for Bus Riders

Adopt a Traffic Circle Program



Some added benefits



- Citizens work together on neighborhood issues and projects and get to know each other
- Effect change in neighborhoods
- Exposure to diverse views and expertise
- Citizens learn leadership
- Increased volunteerism
- Increased awareness of community/government
- Many have gone on to be elected officials

Questions?



MISSOULA NEIGHBORHOODS

