

CITY OF MISSOULA, MONTANA  
 FUND BALANCES OF GOVERNMENTAL FUNDS  
 Last Ten Fiscal Years  
 (modified accrual basis of accounting)

	Fiscal Year									
	2009	2010	2011	2012	2013	2014	2015	2016	2017	2018
<b>General Fund</b>										
Reserved	\$ 699,325	\$ 740,667	\$ —	\$ —	\$ —	\$ —	\$ —	\$ —	\$ —	\$ —
Unreserved	201,062	1,348,317	—	—	—	—	—	—	—	—
Nonspendable*			1,148,767	1,232,302	1,259,186	1,129,654	1,404,250	—	—	—
Inventory	—	—	—	—	—	—	—	1,055,988	1,143,230	1,088,330
Prepaid Expenses	—	—	—	—	—	—	—	277,986	253,003	244,220
Restricted*	—	—	165,282	105,804	157,822	179,972	179,972	—	—	—
Cemetery memorial	—	—	—	—	—	—	—	7,490	25,587	49,210
Title I Revolving Loan programs	—	—	—	—	—	—	—	658,660	235,191	238,952
Assigned*	—	—	1,203,481	1,284,045	1,757,237	1,716,911	1,868,348	1,693,229	1,725,913	1,808,443
Unassigned*	—	—	1,152,657	1,940,474	2,968,121	2,543,264	2,160,723	1,799,445	452,861	1,361,438
<b>Total General Fund</b>	<b>\$ 900,387</b>	<b>\$ 2,088,984</b>	<b>\$ 3,670,187</b>	<b>\$ 4,562,625</b>	<b>\$ 6,142,366</b>	<b>\$ 5,569,801</b>	<b>\$ 5,613,293</b>	<b>\$ 5,492,798</b>	<b>\$ 3,835,785</b>	<b>\$ 4,790,593</b>
<b>All other governmental funds</b>										
Reserved	\$ 3,654,339	\$ 3,869,555	\$ —	\$ —	\$ —	\$ —	\$ —	\$ —	\$ —	\$ —
Unreserved, reported in:										
Special revenue funds	3,814,089	4,124,600	—	—	—	—	—	—	—	—
Debt service funds	—	—	—	—	—	—	—	—	—	—
Capital projects funds	(4,728,035)	(4,089,044)	—	—	—	—	—	—	—	—
Nonspendable*	—	—	11,505	12,042	—	—	—	—	—	13,071
Restricted*	—	—	7,911,860	7,409,318	6,789,639	6,302,882	6,342,952	—	—	—
Building construction inspections	—	—	—	—	—	—	—	1,451,087	1,998,851	2,430,808
Capital Project expenditures	—	—	—	—	—	—	—	962,521	766,883	663,981
Debt	—	—	—	—	—	—	—	3,262,391	—	3,136,114
Grant restrictions for program expenditures	—	—	—	—	—	—	—	509,292	960,141	1,526,669
Law Enforcement	—	—	—	—	—	—	—	293,319	3,653,132	281,688
Public works safety & maintenance	—	—	—	—	—	—	—	186,680	125,277	138,965
Committed*	—	—	1,374,228	2,048,128	2,892,425	4,543,997	5,289,662	6,279,094	3,722,872	3,918,115
Assigned*	—	—	—	—	—	—	21,240	87,754	171,473	254,994
Unassigned*, reported in:										
Special revenue funds	—	—	(332,574)	(149,817)	(105,325)	(986,470)	(400,440)	(233,312)	(1,195,469)	(1,043,028)
Debt service funds	—	—	(36,421)	(174,575)	(23,761)	(189,696)	(331,743)	(351,757)	(379,470)	(424,989)
Capital projects funds	—	—	(3,962,631)	(4,602,847)	(5,681,029)	(8,125,283)	(9,907,630)	(9,958,916)	(7,741,322)	(4,668,696)
Water funds	—	—	—	—	—	—	(3,532,964)	(6,248,789)	—	—
Neighborhood stabilization funds	—	—	—	(4,139)	—	—	—	—	—	—
<b>Total other governmental funds</b>	<b>\$ 2,740,393</b>	<b>\$ 3,905,111</b>	<b>\$ 4,965,967</b>	<b>\$ 4,538,110</b>	<b>\$ 3,871,949</b>	<b>\$ 1,545,430</b>	<b>\$ (2,518,923)</b>	<b>\$ (3,760,636)</b>	<b>\$ 2,082,368</b>	<b>\$ 6,227,692</b>

Source: City of Missoula

\* Restated to conform to GASB Statement No. 54

**STATISTICAL SECTION**

**CITY OF MISSOULA, MONTANA**  
**CHANGES IN FUND BALANCES OF GOVERNMENTAL FUNDS**  
**Last Ten Fiscal Years**  
**(modified accrual basis of accounting)**

	Fiscal Year									
	2009	2010	2011	2012	2013	2014	2015	2016	2017	2018
<b>Revenues</b>										
Taxes and assessments	\$26,649,687	\$27,445,555	\$28,256,587	\$29,396,016	\$31,729,767	\$31,161,007	\$32,506,332	\$34,184,222	\$35,696,747	\$37,925,774
Licenses and permits	2,753,704	3,050,653	3,092,436	2,866,229	3,227,926	3,119,709	3,663,422	3,848,093	4,442,860	4,155,070
Intergovernmental	13,147,938	20,456,138	17,531,499	25,130,561	17,665,516	17,000,835	19,095,397	19,423,835	19,139,911	19,778,757
Charges for services	4,439,499	4,475,126	5,160,326	5,106,399	6,057,449	5,596,577	6,368,100	7,047,188	7,987,812	9,004,140
Fines and forfeitures	1,130,177	1,203,587	1,008,945	1,344,578	1,565,130	1,347,949	1,326,509	1,546,732	1,624,922	1,363,828
Miscellaneous	1,168,486	1,464,092	1,205,961	613,255	625,976	544,245	836,745	733,501	750,424	884,455
Interest earnings	156,522	63,362	32,409	41,691	47,960	21,214	13,687	13,251	19,290	25,824
Gain on disposal of fixed assets	—	—	—	—	—	—	—	—	14,445	116,753
<b>Total revenues</b>	<b>\$49,446,013</b>	<b>\$58,158,513</b>	<b>\$56,288,163</b>	<b>\$64,498,728</b>	<b>\$60,919,724</b>	<b>\$58,791,536</b>	<b>\$63,810,192</b>	<b>\$66,796,822</b>	<b>\$69,676,411</b>	<b>\$73,254,601</b>
<b>Expenditures</b>										
General government	\$ 7,752,035	\$ 7,252,975	\$ 6,493,866	\$ 6,949,250	\$ 8,034,601	\$ 9,838,640	\$10,204,889	\$10,871,089	\$11,129,850	\$11,376,046
Public safety	21,669,039	22,227,258	22,431,087	23,834,156	25,803,943	28,002,557	28,012,238	29,027,968	29,870,105	31,998,361
Public works	6,624,812	6,577,834	7,962,836	7,437,537	7,393,392	7,193,974	9,962,351	10,519,825	7,950,005	8,209,804
Public health	1,404,043	1,368,398	1,372,380	1,431,431	1,482,096	1,550,087	1,644,431	1,706,945	1,797,051	1,933,801
Social and economic	118,450	118,450	116,000	116,000	116,000	210,000	210,000	175,000	210,000	226,459
Culture and recreation	3,278,075	3,293,005	3,289,120	3,528,049	3,838,271	4,091,295	4,434,040	4,769,242	5,046,809	5,582,925
Community development	1,193,372	4,017,676	2,264,947	10,348,859	1,238,419	227,258	1,411,431	1,336,254	1,273,642	1,200,922
Conservation of natural resources	—	7,757	450	100	120	120	—	—	—	—
Miscellaneous	—	1,041,180	1,189,351	1,003,472	1,049,647	1,057,905	788,789	818,567	165,219	905,800
Debt service - principal	3,026,661	3,121,407	3,484,312	3,689,100	3,057,702	3,695,116	4,696,540	7,128,255	4,738,252	4,534,378
Debt service - interest	1,595,937	1,584,136	1,595,391	1,556,195	2,531,043	841,703	836,167	1,197,723	1,035,880	974,418
Capital outlay	5,401,985	8,518,735	7,777,324	6,202,777	6,863,986	5,749,618	8,477,784	6,366,171	12,903,656	7,019,541
<b>Total expenditures</b>	<b>\$52,064,409</b>	<b>\$59,128,811</b>	<b>\$57,977,065</b>	<b>\$66,096,927</b>	<b>\$61,409,220</b>	<b>\$62,458,274</b>	<b>\$70,678,660</b>	<b>\$73,917,039</b>	<b>\$76,120,469</b>	<b>\$73,962,455</b>
Excess of revenues over (under) expenditures	<b>\$ (2,618,396)</b>	<b>\$ (970,298)</b>	<b>\$ (1,688,902)</b>	<b>\$ (1,598,199)</b>	<b>\$ (489,496)</b>	<b>\$ (3,666,738)</b>	<b>\$ (6,868,468)</b>	<b>\$ (7,120,217)</b>	<b>\$ (6,444,058)</b>	<b>\$ (707,854)</b>
<b>Other financing sources (uses)</b>										
Transfers in	\$ 5,343,911	\$ 5,531,051	\$ 4,989,066	\$ 7,143,975	\$ 7,539,764	\$ 7,246,955	\$ 7,227,765	\$ 7,334,163	\$ 9,567,223	\$10,269,851
Transfers out	(5,282,309)	(5,557,582)	(4,797,139)	(7,478,899)	(8,145,604)	(8,060,866)	(8,065,955)	(8,056,043)	(10,284,306)	(10,898,986)
Payments to Refunded Bond Escrow Agent	—	(983,591)	—	—	(5,541,672)	(5,781,508)	—	—	—	—
Issuance of Refunding Bonds	—	1,000,000	—	—	5,480,000	5,860,000	—	—	—	—
Premium on Refunded Bonds	—	—	—	—	152,081	—	—	—	—	—
Issuance of long term debt/capital leases	—	3,276,941	4,168,336	2,559,396	1,895,150	1,514,851	3,159,644	6,472,883	4,651,112	6,302,010
Proceeds from sale of capital assets	82,716	56,794	—	—	22,171	465	—	—	—	—
<b>Total other financing sources (uses)</b>	<b>\$ 144,318</b>	<b>\$ 3,323,613</b>	<b>\$ 4,360,263</b>	<b>\$ 2,224,471</b>	<b>\$ 1,401,890</b>	<b>\$ 779,897</b>	<b>\$ 2,321,454</b>	<b>\$ 5,751,003</b>	<b>\$ 3,934,029</b>	<b>\$ 5,672,875</b>
<b>Net change in fund balances</b>	<b>\$ (2,474,078)</b>	<b>\$ 2,353,315</b>	<b>\$ 2,671,361</b>	<b>\$ 626,272</b>	<b>\$ 912,394</b>	<b>\$ (2,886,841)</b>	<b>\$ (4,547,014)</b>	<b>\$ (1,369,214)</b>	<b>\$ (2,510,029)</b>	<b>\$ 4,965,021</b>
Debt service as a percentage of non-capital expenditures	10.55%	10.76%	12.61%	9.96%	12.37%	9.00%	10.72%	14.87%	15.16%	12.98%

Source: City of Missoula

**CITY OF MISSOULA, MONTANA  
OVERLAPPING PROPERTY TAX LEVIES  
Last Ten Fiscal Years**

<b>Taxing Authority</b>	<b>2010</b>	<b>2011</b>	<b>2012</b>	<b>2013</b>	<b>2014</b>	<b>2015</b>	<b>2016</b>	<b>2017</b>	<b>2018</b>	<b>2019</b>
City of Missoula	222.45	225.56	233.24	240.90	243.52	245.62	252.81	260.08	252.27	242.17
<b>County of Missoula</b>										
County Wide	138.94	139.80	142.47	145.04	150.32	160.09	167.96	172.32	174.44	179.26
Open Space Bond Levy		1.66	2.33	3.04	3.33	3.45	2.74	3.22	3.10	3.15
Fort Missoula Regional Park	0.00	0.00	0.00	0.00	0.00	0.00	0.00	13.43	12.09	12.27
School Equalization	104.62	103.45	100.94	100.17	104.60	105.64	104.35	103.73	101.91	102.04
<b>Total</b>	<b>243.56</b>	<b>244.91</b>	<b>245.74</b>	<b>248.25</b>	<b>258.25</b>	<b>269.18</b>	<b>275.05</b>	<b>292.70</b>	<b>291.54</b>	<b>296.72</b>
<b>District Schools</b>										
School District One	142.75	141.50	145.18	141.88	148.94	150.34	149.71	180.04	212.54	216.04
High Schools	76.46	74.63	76.44	71.92	72.19	72.77	75.11	85.01	103.10	100.03
<b>Total</b>	<b>219.21</b>	<b>216.13</b>	<b>221.62</b>	<b>213.80</b>	<b>221.13</b>	<b>223.11</b>	<b>224.82</b>	<b>265.05</b>	<b>315.64</b>	<b>316.07</b>
<b>State Levies</b>										
University	6.00	6.00	6.00	6.00	6.00	6.00	6.00	6.00	6.00	6.00
Education Foundation	40.00	40.00	40.00	40.00	40.00	40.00	40.00	40.00	40.00	40.00
<b>Total</b>	<b>46.00</b>	<b>46.00</b>	<b>46.00</b>	<b>46.00</b>	<b>46.00</b>	<b>46.00</b>	<b>46.00</b>	<b>46.00</b>	<b>46.00</b>	<b>46.00</b>
Urban Transportation District	16.30	16.45	17.69	19.51	21.05	34.26	40.47	40.47	36.78	37.29
<b>Total Levy on City Residents</b>	<b>747.52</b>	<b>749.05</b>	<b>764.29</b>	<b>768.46</b>	<b>789.95</b>	<b>818.17</b>	<b>839.15</b>	<b>904.30</b>	<b>942.23</b>	<b>938.25</b>
<b>Overall Property Tax Increase (Decrease)</b>	<b>(0.15)%</b>	<b>0.20%</b>	<b>2.03%</b>	<b>0.55%</b>	<b>2.80%</b>	<b>3.57%</b>	<b>2.56%</b>	<b>7.76%</b>	<b>4.19%</b>	<b>(0.42)%</b>
<b>Other Levies of Interest</b>										
County Only	35.80	36.18	36.18	36.38	36.37	36.37	37.70	39.57	37.88	37.97
Missoula Rural Fire	94.13	97.97	97.97	100.33	102.39	112.59	112.61	114.33	110.38	113.69

Source: County of Missoula Accounting Office  
 Note: University mills not allocated to MRA

**CITY OF MISSOULA, MONTANA  
ESTIMATED MARKET VALUE, TAXABLE VALUE AND MILL LEVY  
Last Ten Fiscal Years**

<b>Fiscal Year</b>	<b>Estimated Market Value</b>	<b>Taxable Value City Without Tax Increment</b>	<b>Ratio of Total Assessed Value to Total Estimated Market Value</b>	<b>Taxable Value Tax Increment Districts</b>	<b>Mill Levy</b>
2010	\$ 3,757,969,949	\$ 104,408,018	2.78%	\$ 4,507,159	222.45
2011	3,965,146,053	106,229,033	2.68%	5,245,004	225.56
2012	4,140,685,284	107,878,992	2.61%	5,114,782	233.24
2013	4,110,699,383	108,167,019	2.63%	4,530,936	240.90
2014	4,305,020,382	109,336,360	2.54%	4,732,437	243.52
2015	4,406,017,003	108,677,495	2.47%	3,946,539	245.62
2016	7,303,174,348	111,843,874	1.53%	4,012,384	252.81
2017	7,390,919,522	113,132,406	1.53%	4,569,578	260.08
2018	8,176,081,623	121,755,578	1.49%	7,588,347	252.27
2019	8,234,651,575	121,729,687	1.48%	8,122,870	242.17

Source: Missoula County Assessors Office

**CITY OF MISSOULA, MONTANA**  
**ASSESSED VALUE AND ESTIMATED TAXABLE VALUE OF PROPERTY**  
**Last Ten Fiscal Years**  
**(in thousands of dollars)**

<b>Fiscal Year</b>	<b>Real Property</b>	<b>Equipment &amp; Fixtures</b>	<b>Electric, Airline &amp; Telecommunications</b>	<b>Railroad</b>	<b>Electric, Phone Co-ops &amp; Pollution Control</b>	<b>Other</b>	<b>Tax Increment District</b>	<b>Total Taxable Assessed Value</b>
2010	96,352	5,133	3,585	348	380	3,117	(4,507)	104,408
2011	96,914	4,785	5,304	397	393	3,681	(5,245)	106,229
2012	98,235	4,851	5,376	402	398	3,732	(5,115)	107,879
2013	98,669	3,852	5,175	440	407	4,155	(4,531)	108,167
2014	99,741	4,086	4,928	587	346	4,381	(4,732)	109,336
2015	101,034	2,242	3,848	501	396	4,604	(3,947)	108,677
2016	103,502	2,058	3,048	604	361	6,283	(4,012)	111,844
2017	104,237	2,546	4,584	521	397	5,417	(4,570)	113,132
2018	116,306	2,623	3,510	654	398	5,852	(7,588)	121,756
2019	116,906	2,580	3,319	639	396	6,013	(8,123)	121,730

\*Property in the City does have a Market Value and is assessed at the actual value at a rate of 2.5%; therefore, the assessed values are equal to actual value.

\*This table presents taxable property assessments at values calculated after certified values were received from the Department of Revenue. These values will not articulate to certified values due to the date that this report is run by the Department of Revenue.

^ 2009 Values are no longer available due to Department of Revenue (DOR) software constraints and timing issues in FY2009.

Source: Missoula County Assessor's Office and Department of Revenue.

**CITY OF MISSOULA, MONTANA  
PROPERTY VALUE AND NEW CONSTRUCTION  
Last Ten Fiscal Years**

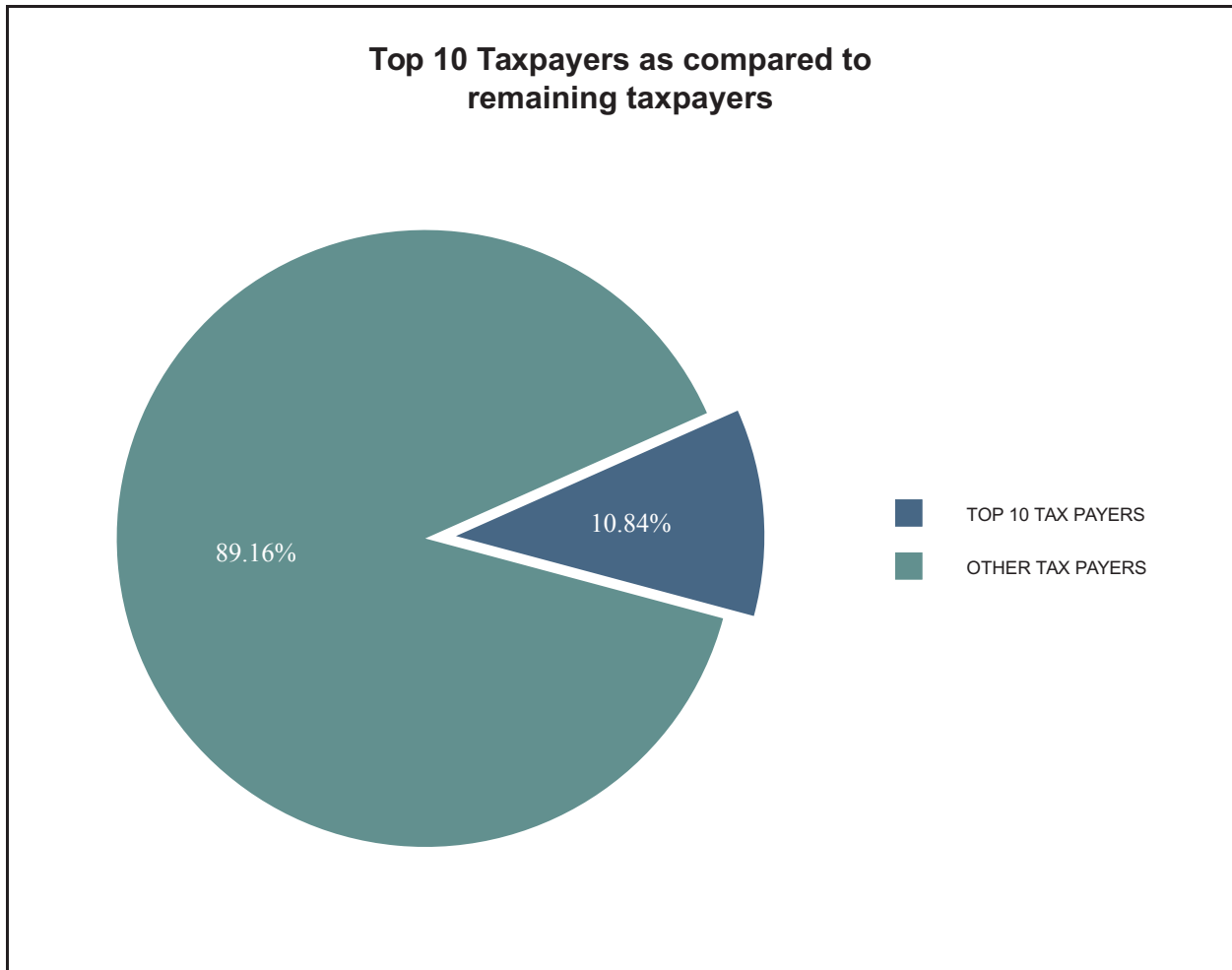
Fiscal Year	Assessed Value City Property	New Construction						% Change Over Last Year
		Single Family		Multi-Family		All Construction		
		Number	Value Estimate	Number	Value Estimate	Number	Value Estimate	
2009	3,369,424,088	142	11,627,586	73	3,019,865	1,291	63,987,567	-51.95%
2010	3,757,969,949	139	12,643,362	63	2,552,415	1,306	54,867,213	-16.62%
2011	3,965,146,053	95	8,892,276	262	17,010,385	1,283	87,790,572	60.01%
2012	4,140,685,284	96	9,675,751	329	15,186,996	1,395	58,443,007	-33.43%
2013	4,110,699,383	127	11,284,179	371	14,682,857	1,485	68,558,394	17.31%
2014	4,305,020,382	160	18,828,163	210	9,575,271	1,319	74,177,588	8.20%
2015	4,406,017,003	176	18,033,312	302	12,840,095	1,427	122,960,429	65.76%
2016	7,303,174,348	195	20,368,865	150	9,679,420	1,515	117,605,567	-4.35%
2017	7,390,919,522	246	25,059,568	736	41,624,374	1,576	161,435,250	37.27%
2018	8,176,081,623	253	25,610,521	310	15,000,260	1,434	167,128,016	3.53%

Source: City of Missoula Building Inspection Office and Missoula County Assessor

**CITY OF MISSOULA  
FOR FY 2018 - FY 2019**

Rank	Taxpayer	Taxable Value
1	NORTHWESTERN ENERGY	\$ 5,963,176
2	SOUTHGATE MALL MONTANA LLC ***	1,204,365
3	RCHP BILLINGS MISSOULA LLC *	978,437
4	VERIZON WIRELESS	940,956
5	MONTANA RAIL LINK	857,669
6	CENTURYLINK INC**	803,213
7	GATEWAY LIMITED PARTNERSHIP	782,889
8	CHARTER COMMUNICATIONS	773,709
9	UT MISSOULA LLC	464,151
10	ST PATRICK HOSPITAL CORP	422,095
		\$ 13,190,660

\* Formerly Community Hospital



**CITY OF MISSOULA, MONTANA  
PROPERTY TAX LEVIES AND COLLECTIONS  
GOVERNMENTAL FUND TYPES  
Last Ten Fiscal Years**

Fiscal Year Ended June 30th	Total Tax Levy for Fiscal Year	Collected within the Fiscal Year of the Levy		Collections in Subsequent Years	Total Collections to Date*		
		Amount	Percentage of Levy		Amount	Percentage of Levy	Percentage of Delinquencies
2009	\$ 22,914,220	\$ 22,301,910	97.33%	\$ 317,891	\$ 22,619,800	98.72%	2.67 %
2010	23,225,564	22,737,517	97.90%	636,697	23,374,213	100.64%	2.10 %
2011	23,961,021	22,743,766	94.92%	862,661	23,606,427	98.52%	5.08 %
2012	25,161,696	24,607,176	97.80%	211,507	24,818,683	98.64%	2.20 %
2013	26,057,435	26,150,721	100.36%	850,849	27,001,570	103.62%	(0.36)%
2014	26,625,590	25,882,072	97.21%	140,631	26,022,703	97.74%	2.79 %
2015	26,693,366	26,658,963	99.87%	209,372	26,868,335	100.66%	0.13 %
2016	28,203,105	27,863,139	98.79%	100,318	27,963,457	99.15%	1.21 %
2017	29,423,476	28,786,655	97.84%	98,256	28,884,910	98.17%	2.16 %
2018	30,713,521	30,145,774	98.15%	217,539	30,363,313	98.86%	1.85 %

Source: City of Missoula

\* Delinquent tax collections include amounts collected from penalties, interest, and other delinquent collections. The City does not identify delinquent collections by the year for which the tax was levied.

In 2014 this table was updated to reflect all taxes levied by the City of Missoula, not just the General Fund.

While 2014 delinquencies are within a normal range we feel it germane to the reader to mention the passage of SB96 which reduced 2014 tax receipts for strict personal property. The legislature attempted to make taxing jurisdictions whole by one-time payments. The City of Missoula received a one-time payment of \$327,628 which is reflected in Intergovernmental revenues rather than tax receipts.



**CITY OF MISSOULA, MONTANA  
GENERAL OBLIGATION DEBT RATIOS  
REQUIRED CONTINUING DISCLOSURE**

The following general obligation debt ratios are provided as of June 30, 2018

Market Valuation	\$	8,176,081,623
Market Valuation (Less Tax Increment)	\$	8,168,493,276
Taxable Valuation	\$	129,343,925
Taxable Valuation (Less Tax Increment)	\$	121,755,578
Population		74,977
Direct Debt Per Capita	\$	233
Direct and Overlapping Debt Per Capita	\$	2,175
Direct Debt to Market Valuation		0.21%
Direct and Overlapping Debt to Market Valuation		1.87%
Direct Debt to Taxable Valuation		13.50%
Direct and Overlapping Debt to Taxable Valuation		118.19%
Market Valuation per Capita	\$	109,048
Taxable Valuation per Capita	\$	1,725

Source: City of Missoula

**SUMMARY OF DIRECT DEBT, INDIRECT DEBT AND DEBT RATIOS  
REQUIRED CONTINUING DISCLOSURE  
AS OF JUNE 30, 2018**

	Summary of Direct Debt		
	Gross Debt	Less: Debt Service Funds	Net Direct Debt
General Obligation Debt Supported by Taxes	\$ 17,463,712	—	\$ 17,463,712
Debt Supported by General Fund	13,898,727	—	13,898,727
Revenue Debt (Water and Sewer)	120,495,224	( a )	120,495,224
Revenue Debt (TIF and Parking)	44,428,284	( b )	44,428,284
Subtotal of Direct Debt	<u>\$ 196,285,947</u>		<u>\$ 196,285,947</u>

- (a) Monies are transferred from the Sewer Enterprise Fund to make the principal and interest payments on these bonds.  
 (b) Monies from the Missoula Parking Commission and tax increment revenues are used to make principal and interest payments on these bonds.

	Summary of Indirect Debt		
	G.O. Debt as of June 30, 2018	Debt Applicable to Tax Capacity of City	
		Percentage <sup>^</sup>	Amount
Taxing Unit:			
Missoula County High School District	\$ 70,275,000	88.26%	\$ 62,024,715
Missoula County Elementary School District	83,125,000	50.54%	42,011,375
Hellgate Elementary School District	28,290,000	15.91%	4,500,939
School District No. 20 (Desmet)	75,000	2.96%	2,220
Missoula County	45,470,000	56.14%	25,526,858
Subtotal of Indirect Debt	<u>\$ 227,235,000</u>		<u>\$ 134,066,107</u>

**Total of Direct and Indirect Debt**      \$ 330,352,054

	Debt Ratios*	
	G.O. Net Direct Debt	G.O. Indirect & Net Direct Debt
Current Year Estimated Value	0.21%	1.85%
Per Capita	\$233	\$2,021

\*Includes general obligation debt and debt supported by general fund revenues, excludes revenue supported debt.  
<sup>^</sup>The percentage of overlapping debt applicable is estimated using taxable assessed property values. Applicable percentages were estimated by determining the portion of the county's taxable assessed value that is within the government's boundaries and dividing it by the county's total taxable assessed value.

Source: City of Missoula  
 Source: Missoula County Assessors Office  
 Source: Local Schools

**CITY OF MISSOULA, MONTANA**  
**LEGAL DEBT MARGIN INFORMATION**  
 Last Ten Fiscal Years  
 (amounts expressed in thousands)

	Fiscal Year									
	2009	2010	2011	2012	2013	2014	2015	2016	2017	2018
Debt Limit	\$ 84,236	\$ 93,949	\$ 99,129	\$ 103,517	\$ 102,767	\$ 107,626	\$ 110,150	\$ 182,579	\$ 184,773	\$ 204,402
Total net debt applicable to limit	16,426	15,224	13,966	12,661	12,124	11,555	10,178	8,731	7,548	6,462
Legal debt Margin	\$ 67,809	\$ 78,725	\$ 85,163	\$ 90,856	\$ 90,643	\$ 96,071	\$ 99,973	\$ 173,848	\$ 177,225	\$ 197,940
Total net debt applicable to the limit as a percentage of debt limit	19.50%	16.20%	14.09%	12.23%	11.80%	10.74%	9.24%	4.78%	4.08%	3.16%

**Legal Debt Margin Calculation for Fiscal Year 2018**

Assessed Value of Taxable Property as Ascertained by the last Assessment for Taxes	8,176,082
Debt Limit 2.5% of Assessed Value (1)	<u>2.50%</u>
General Obligation Debt Limit	204,402
Less: Outstanding General Obligation Debt, June 30, 2018	<u>6,462</u>
Total net debt applicable to limit	<u>197,940</u>
Legal Debt Margin	<u><u>197,940</u></u>

(1) Montana Statute (7-7-4201) prescribes a legal debt limit of 2.5% of the total assessed value of taxable property, which was increased in the FY 2007 legislature from 1.51%.  
 Source: City of Missoula  
 Source: Missoula County Assessors Office

STATISTICAL SECTION

CITY OF MISSOULA, MONTANA  
 RATIO OF OUTSTANDING DEBT BY TYPE  
 Last Ten Fiscal Years

Fiscal Year	Governmental Activities							Business-Type Activities					Total Primary Government	Total Personal Per capita Income*	Total Population	Debt as a Percentage of Personal Income	Debt Per Capita	Debt as a Percentage of Market Value
	General Obligation Bonds	Limited Obligation Bonds	Special Assessment Bonds	Bond Premiums	Loans Payable	Capital Leases	Sidewalk & Curb Warrants	Revenue Bonds	Capital Leases	Notes Payable	FBO Contracts Payable							
2009	16,235,000	5,130,000	14,030,295		191,309	—	100,248	14,801,231	—	—		50,488,083	35,531	66,295	2.14%	762	1.34%	
2010	15,065,000	4,935,000	14,350,241		159,063	1,378,125	—	13,883,485	—	—		49,770,914	33,642	66,788	2.22%	745	1.32%	
2011	13,840,000	5,625,000	15,021,055		125,646	1,959,752	—	24,579,098	71,250	—		61,221,801	35,936	67,565	2.52%	906	1.63%	
2012	12,570,000	5,285,000	15,322,685		91,014	2,174,849	—	23,600,000	385,660	2,525,270		61,954,479	38,046	68,484	2.38%	905	1.50%	
2013	11,465,000	4,935,000	14,189,516		659,267	2,215,466	—	22,051,000	337,080	2,236,246		58,088,575	37,486	69,039	2.24%	841	1.41%	
2014	11,020,000	4,575,000	12,738,346		534,747	3,201,445	—	20,857,000	232,296	1,962,919		55,121,753	39,211	69,821	2.01%	789	1.28%	
2015	9,750,000	4,210,000	11,394,176		427,513	4,967,415	—	19,631,000	149,281	1,430,114		51,959,499	40,803	71,022	1.79%	732	1.18%	
2016	8,395,000	5,100,000	10,693,500	383,138	336,190	4,989,470	—	18,799,002	92,293	1,392,863		50,181,456	44,134	72,070	1.58%	696	0.69%	
2017	7,305,000	4,650,000	12,173,827	363,981	242,822	4,879,043	—	158,062,445	389,699	1,353,747		189,420,564	45,370	73,747	5.66%	2,569	2.56%	
2018	6,315,000	7,779,735	11,148,712	344,824	147,321	5,626,847	—	157,684,279	401,474	1,312,237	5,525,518	196,285,947	47,215	74,977	5.54%	2,618	2.40%	

Source: City of Missoula

Source: Missoula County Assessors Office

Source: Montana Department of Labor - Research and Analysis Bureau

\*2010 is the most recent data available. Preceding years to 2004-2009 are City estimates.

**CITY OF MISSOULA, MONTANA  
RATIO OF ANNUAL DEBT SERVICE REQUIREMENTS FOR  
Last Ten Fiscal Years**

Amounts expressed in thousands, except population and per capita

<b>Fiscal Year</b>	<b>General Obligation Bonds*</b>	<b>Total Taxable Assessed Valuation</b>	<b>Percentage of Taxable Value of Property</b>	<b>Estimated Population</b>	<b>Per Capita</b>
2009	\$ 16,235	\$ 103,000	15.76%	66,295	\$ 245
2010	15,065	104,408	14.43%	66,788	226
2011	13,840	106,229	13.03%	67,565	205
2012	12,570	107,879	11.65%	68,484	184
2013	11,465	108,167	10.60%	69,039	166
2014	11,020	109,336	10.08%	69,821	158
2015	9,750	108,677	8.97%	71,022	137
2016	8,395	111,844	7.51%	72,070	116
2017	7,305	113,132	6.46%	73,747	99
2018	6,315	121,756	5.19%	74,977	84

\* Presented as net bonded debt (net bonded debt is balance of outstanding debt less restricted funds collected for debt payment). First year presented is FY2012. All other fiscal years is presented as total bonded debt.

Source Restricted Debt: Combining Balance Sheet - Nonmajor Debt Service Funds

Source: City of Missoula

Source: Missoula County Assessors Office

Source: Bureau of Economic Analysis

**CITY OF MISSOULA, MONTANA  
 REVOLVING FUND YEAR-END BALANCES  
 REQUIRED CONTINUING DISCLOSURE  
 Last Ten Fiscal Years**

<b>Fiscal Year</b>	<b>Revolving Fund Cash Balance</b>	<b>Principal Amount of Bonds</b>	<b>Percentage</b>
2009	\$ 719,399	\$ 14,030,295	5.13%
2010	746,320	14,250,241	5.24%
2011	794,547	15,021,055	5.29%
2012	774,812	15,322,685	5.06%
2013	719,735	14,189,516	5.07%
2014	636,917	12,738,346	5.00%
2015	569,709	11,394,176	5.00%
2016	535,000	10,693,500	5.00%
2017	624,223	12,173,827	5.13%
2018	557,436	11,148,712	5.00%

Source: City of Missoula

**CITY OF MISSOULA, MONTANA**  
**REVOLVING FUND CHANGES IN FUND BALANCE**  
**REQUIRED CONTINUING DISCLOSURE**  
**Last Ten Fiscal Years**

	Fiscal Year									
	2009	2010	2011	2012	2013	2014	2015	2016	2017	2018
Beginning Balance	\$ 779,966	\$ 719,399	\$ 764,101	\$ 794,547	\$ 791,209	\$ 735,266	\$ 652,449	\$ 586,596	\$ 550,531	\$ 624,222
Disbursements/Transfers	(60,567)	44,702	30,446	(3,338)	(55,943)	(82,817)	(65,853)	(36,065)	73,691	(66,787)
Ending Balance	<u>\$719,399</u>	<u>\$764,101</u>	<u>\$794,547</u>	<u>\$791,209</u>	<u>\$ 735,266</u>	<u>\$ 652,449</u>	<u>\$ 586,596</u>	<u>\$ 550,531</u>	<u>\$ 624,222</u>	<u>\$ 557,435</u>
Assets:										
Cash	\$ 702,257	\$ 746,320	\$ 793,639	\$ 774,812	\$ 719,735	\$ 636,917	\$ 569,709	\$ 535,000	\$ 624,223	\$ 557,436
Due from SID Funds	—	—	—	865	—	—	569,709	—	41,452	25,920
Other Receivables	182,844	167,952	135,548	134,640	119,108	103,577	88,046	72,514	—	—
Total Assets	<u>885,101</u>	<u>914,272</u>	<u>929,187</u>	<u>910,317</u>	<u>838,843</u>	<u>740,494</u>	<u>1,227,463</u>	<u>607,514</u>	<u>665,674</u>	<u>583,356</u>
Liabilities:										
Interfund Payable	—	—	—	—	—	—	568,353	—	—	—
Deferred Revenue	165,702	150,171	134,639	119,108	103,577	88,046	72,514	56,983	41,452	25,920
Total Liabilities	<u>165,702</u>	<u>150,171</u>	<u>134,639</u>	<u>119,108</u>	<u>103,577</u>	<u>88,046</u>	<u>640,867</u>	<u>56,983</u>	<u>41,452</u>	<u>25,920</u>
Total Fund Balance	<u>\$ 719,399</u>	<u>\$ 764,101</u>	<u>\$ 794,548</u>	<u>\$ 791,209</u>	<u>\$ 735,266</u>	<u>\$ 652,448</u>	<u>\$ 586,596</u>	<u>\$ 550,531</u>	<u>\$ 624,222</u>	<u>\$ 557,436</u>

Source: City of Missoula

**CITY OF MISSOULA, MONTANA  
DEMOGRAPHIC AND ECONOMIC STATISTICS  
Last Ten Fiscal Years**

Fiscal Year	Population		Income Statistics		State Unemployment Rate	Missoula County Unemployment Rate
	Estimated City Population	County Population	Total Personal Income (2)	Per Capita Income		
2009	66,295	108,000	3,818,772	35,531	5.7%	6.3%
2010	66,788	109,299	3,866,079	33,642	6.5%	7.3%
2011	67,565	110,160	3,958,700	35,936	6.3%	6.7%
2012	68,484	111,077	4,226,000	38,046	5.4%	5.9%
2013	69,039	111,731	4,188,400	37,486	4.8%	5.2%
2014	69,821	112,681	4,418,300	39,211	4.1%	4.5%
2015	71,022	114,181	4,658,900	40,803	3.5%	3.8%
2016	72,070	116,130	5,125,320	44,134	3.5%	3.8%
2017	73,747	119,108	5,279,080 <sup>1</sup>	45,370 <sup>1</sup>	4.0%	3.6%
2018	74,977	120,447	5,466,596 <sup>1</sup>	47,215 <sup>1</sup>	4.0%	3.6%

(1) 2010 population is from the US Census Bureau. All other years are estimated.

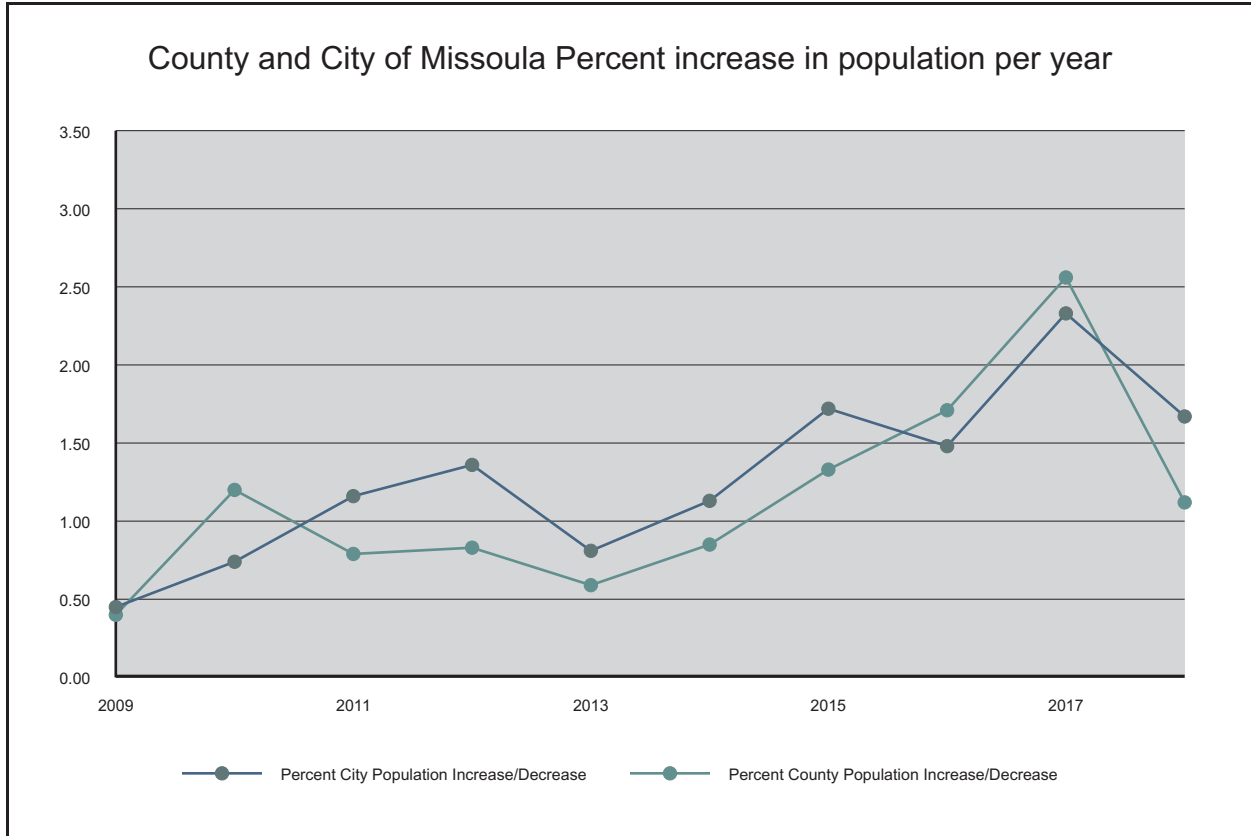
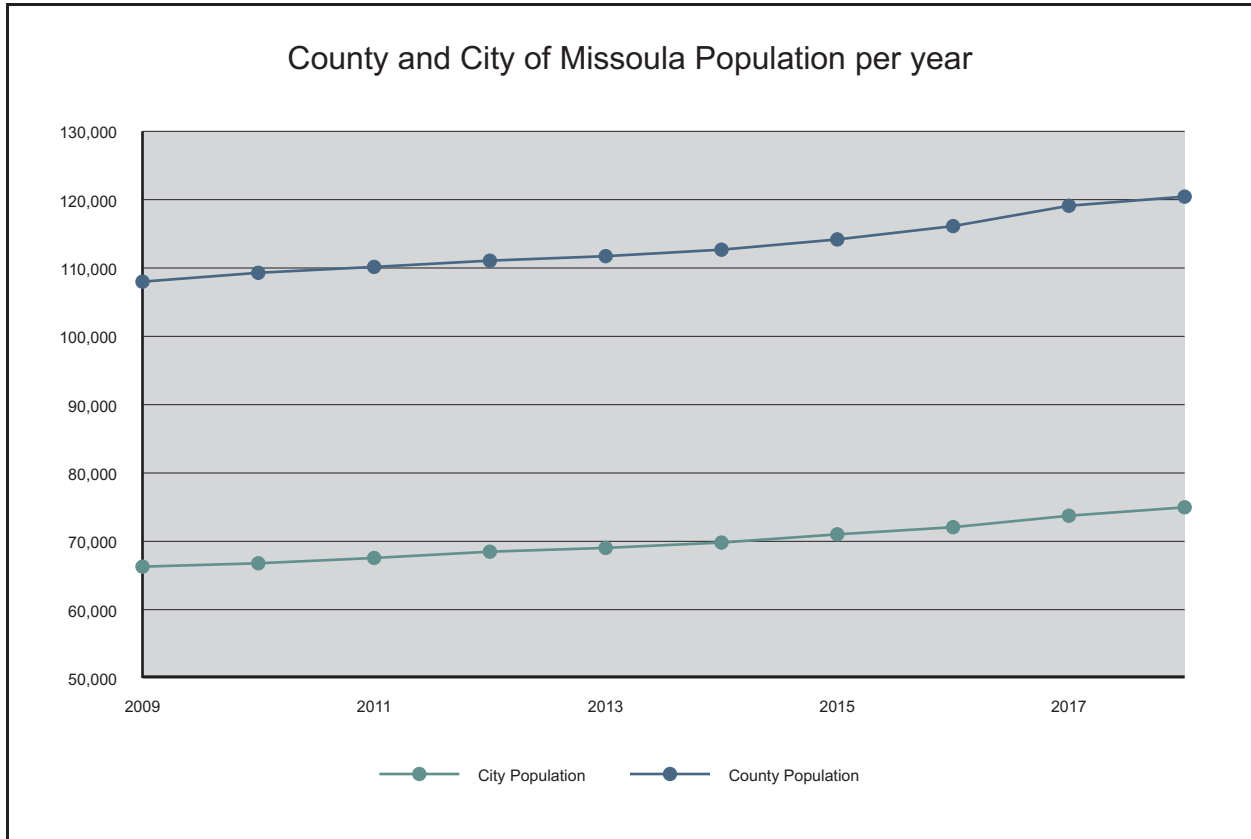
(2) Only Missoula County information available.

\* Estimate based on average increase of prior years.

Source - Bureau of Economic Analysis, Department of Labor & Industry, Research & Analysis Bureau

N/A - Not available





City of Missoula  
Climate Demographics  
Last 30 years

Temperature	Missoula (1893-2010)	Kalispell (1899-2010)	Butte (1894-2010)	State of Montana	State of Idaho
Latest 30 Year Normal Temperature (1981-2010)	45.90	43.25	39.85	42.70	44.4
Average Temperature	45.85	43.20	39.86	43.21	45.95
Average Annual High Temperature	58.1	55.3	53.9	55.94	58.86
Average Annual Low Temperature	33.7	31.2	25.8	30.49	33.03
Lowest Temperature	-33 (1/26/1957)	-38 (1/30/1950 - 1/31/1950)	-52 (2/9/1933)	-70 Rogers Pass (1/20/1954)	-60 Island Park Dam (1/18/1943)
Highest Temperature	107 (7/6/2007)	105 (8/4/1961)	100 (7/22/1931)	117 Medicine Lake (7/5/1937)	118 Orofino (7/28/1934)

Precipitation	Missoula (1893-2010)	Kalispell (1899-2010)	Butte (1894-2010)
Latest 30 Year Normal Precipitation (1981-2010)	13.84	17.21	12.78
Average Precipitation (Jan-Dec) in inches	14.13	17.00	12.75
Driest Month	Trace August 1967	Trace August 1955	Trace October 1987
Driest Year	8.16 inches 1931	10.42 inches 1944	6.89 inches 1935
Greatest 24-hour Precipitation	2.32 inches (11/5/1927)	2.71 inches (6/29/1982)	3.00 inches (06/09/1913)
Wettest Month	7.38 inches May 1980	6.02 inches July 1983	8.86 inches June 1913
Wettest Year	21.92 inches 1998	25.23 inches 1996	20.55 inches 1909
Annual Average Snowfall in inches	37.00	55.00	62.00
Greatest 24-hour Snow	27.5 inches (11/30/1893)	20.1 inches (12/27/1911)	30.0 inches (10/10/1911)
Greatest Monthly Snow	54.1 inches December 1996	55.9 inches December 1936	32.5 inches October 1911
Greatest Annual Snowfall	106.1 inches 1996	148.8 inches 1996	125.5 inches 1996
Greatest Snow Depth	27.0 inches (12/29/1996)	61.0 inches (12/30/1996)	27.0 inches (12/29/1996)

Source: National Weather Service Forecast Office, Missoula, MT and U.S Climate Data Center

CITY OF MISSOULA, MONTANA  
 TOP EMPLOYERS IN CITY OF MISSOULA  
 Current and Ten Years Ago

<b>Employer</b>	<b>Type of Product or Service</b>	<b>2018</b>	<b>Percentage of Total City Employment</b>	<b>2009</b>	<b>Percentage of Total City Employment</b>
University of Montana	Higher Education	2,892	3.86%	3,651	5.27%
St. Patrick Hospital	Healthcare	1,605	2.14%	1,600	2.31%
Montana Rail Link	Rail Transportation	1,167	1.56%	254	0.37%
Missoula County Public Schools	Public Education	1,129	1.51%	1,424	2.06%
Community Medical Center	Healthcare	860	1.15%	1,200	1.73%
Missoula County	Government	853	1.14%	775	1.12%
Us Forest Service	Federal Government	704	0.94%	800	1.15%
AT&T/DirectTV	Service	675	0.90%	1,000	1.44%
City of Missoula	Government	621	0.83%	514	
Wal-Mart	Retail	585	0.78%	524	0.76%
Western Montana Clinic				252	0.36%

Source - Bureau of Economic Analysis and Department of Labor & Industry, Research & Analysis Bureau

CITY OF MISSOULA, MONTANA  
CITY SERVICES AND EMPLOYMENT

<b>Bargaining Unit</b>	<b>Number of Members</b>	<b>Date Contract Expires</b>
International Association of Firefighters, Local No. 271	89	June 30, 2019
Missoula Police Protective Association	100	June 30, 2019
Montana Federation of Public Employees *		
Building Inspectors	6	June 30, 2019
Maintenance Technicians (Parks and Recreation)	9	June 30, 2019
Wastewater Chemists	3	June 30, 2019
Planners	17	June 30, 2019
Parking Commission	7	June 30, 2019
Wastewater Plant Operators	6	June 30, 2019
Teamsters Union, Local No. 2 - Streets	22	June 30, 2019
Operators' Union, Local No. 4000 - Streets	12	June 30, 2019
Machinists Union, Local No. 88, District No. 86	8	June 30, 2019
Teamsters, Parks and Recreation	25	June 30, 2019
Wastewater Operator's Union, Local 400	8	June 30, 2019
International Brotherhood of Electrical Workers	2	June 30, 2019

Note: Basic services provided through City government include Police and Fire protection, Municipal Sewer and Sanitation, Street Maintenance and Construction, Building Inspection, Zoning Enforcement, Public Works, and Parks and Recreation. As of June 30, 2015, the City employed approximately 626 workers, including Seasonal and Intermittent. Of the total City workforce, approximately 46% were members of organized bargaining units. State law requires Montana Cities to bargain collectively with formally recognized bargaining units. The City considers relations with its bargaining groups to be satisfactory.

\* Formerly MPEA and MEA-MFT

Source: City of Missoula

MISSOULA, MONTANA METROPOLITAN AREA  
 EMPLOYMENT BY MAJOR INDUSTRY TYPE  
 ANNUAL AVERAGE  
 Last Ten Fiscal Years

	Fiscal Year									
	2009	2010	2011	2012	2013	2014	2015	2016	2017	2018 (A)
Goods Producing	5,500	4,600	4,700	4,400	4,500	4,600	4,900	4,900	5,100	5,500
Trade, Transportation and Utilities	12,100	11,300	11,400	11,600	11,100	11,900	12,300	12,200	12,200	12,600
Professional and Business Service	6,100	6,900	6,900	6,800	7,000	7,000	6,500	6,400	6,500	6,600
Educational and Health Services	8,900	9,200	9,500	9,800	10,000	10,000	10,300	10,400	10,800	10,900
Healthcare and Social Assistance	8,400	8,700	9,000	9,200	9,300	9,400	9,700	9,800	10,100	10,300
Leisure and Hospitality	7,600	7,000	6,900	7,400	7,300	7,700	8,100	8,100	8,500	8,500
Government	8,300	10,300	8,400	10,300	10,500	10,600	10,800	10,800	11,000	10,900
	<u>56,900</u>	<u>58,000</u>	<u>56,800</u>	<u>59,500</u>	<u>59,700</u>	<u>61,200</u>	<u>62,600</u>	<u>62,600</u>	<u>64,200</u>	<u>65,300</u>

Source: Department of Labor & Industry, Research & Analysis Bureau

(A) Most recent data available through June 2018.

All other years are annual data

CITY OF MISSOULA, MONTANA  
 OPERATING INDICATORS BY FUNCTION/PROGRAM  
 Last Ten Fiscal Years

Function/Program	Fiscal Year									
	2009	2010	2011	2012	2013	2014	2015	2016	2017	2018
<b>General Government</b>										
Business Licenses Issued	5,141	5,947	5,103	5,872	5,585	5,418	4,566	5,821	5,658	5,466
Amount of SID's Billed (\$)	2,759,874	2,788,949	2,979,149	2,806,770	2,565,463	2,468,350	2,277,577	2,221,810	2,516,030	2,372,380
# Sewer Bills	42,323	42,860	43,493	44,495	45,042	45,042	45,213	45,664	46,326	47,232
<b>Public Safety Activities</b>										
Citations issued	31,700	25,136	20,232	20,554	18,139	15,420	14,042	13,442	20,791	18,413
Orders of Protection issued	398	277	209	236	203	318	267	351	245	193
Attorney's Office - Lawsuits & Claims	41	26	24	22	32	29	28	35	25	33
Attorney - Opened criminal files	2,372	2,313	3,029	4,007	4,255	3,955	3,023	3,777	4,238	3,248
Officers/1,000 population	2	1	1	2	2	2	2	2	1	1
Total sworn officers	101	100	100	104	106	109	109	109	106	109
Police calls for Service	41,424	41,373	40,272	41,334	42,302	41,728	45,605	42,791	53,206	54,126
Total Fire Department Incident Responses*	5,850	6,217	5,752	6,131	6,548	6,745	7,140	7,865	8,169	8,650
<b>Public Works</b>										
Miles of sidewalk installed	4.00	6.78	5.42	4.72	5.58	9.19	4.35	3.48	4.15	8.13
Building Permits Issued	1,291	1,306	1,283	1,395	1,485	1,319	1,427	1,515	1,576	1,434
Construction Value of Bldg permits issued (\$)	63,987,567	54,867,213	87,790,572	58,443,007	68,558,394	74,177,588	122,960,429	117,605,567	161,435,250	167,128,016
Miles of Street	383	391	413	416	419	422	428	443	454	456
Population	66,295	66,788	67,565	68,484	69,039	69,821	71,022	72,070	73,747	74,977

Source: City of Missoula

\* Fire Department Incident Responses are based on Calendar Years. Current Year number through 12/31/17.

CITY OF MISSOULA, MONTANA  
 CAPITAL ASSET STATISTICS BY FUNCTION/PROGRAM  
 Last Ten Fiscal Years

Function	Fiscal Year									
	2009	2010	2011	2012	2013	2014	2015	2016	2017	2018
<b>GENERAL GOVERNMENT</b>										
Vehicles	4	4	4	2	2	2	2	2	2	2
Buildings	3	3	3	4	4	5	5	5	5	5
<b>PUBLIC SAFETY ACTIVITIES</b>										
Fire Stations	5	5	5	5	5	5	5	5	5	5
Fire Engines/Trucks/Vehicles/Vans	26	25	25	31	32	32	33	34	31	32
Police Motorcycles	6	6	6	4	5	5	5	5	5	5
Police Patrol Cars/Passenger Vehicles/ Other Vehicles	62	63	63	66	59	63	63	67	72	77
<b>PUBLIC WORKS</b>										
Curbs (lineal feet)	1,957,574	2,100,819	2,135,361	2,159,796	2,182,153	2,241,246	2,259,480	2,273,980	2,288,394	2,327,924
Sidewalks (sq. feet)	10,232,017	10,599,017	12,699,836	12,824,406	13,345,978	13,588,598	13,703,420	13,795,344	13,904,798	14,119,387
Storm Sewer (lineal feet)	157,826	162,158	168,148	172,360	179,388	179,888	180,368	183,538	184,199	189,001
Sumps	5,307	5,385	5,496	5,524	4,183	4,209	5,585	5,617	5,624	5,742
Signs	56,635	57,502	58,369	59,236	60,103	60,970	61,837	62,704	63,571	64,438
Vehicles	161	163	165	163	123	123	123	225	248	285
Buildings	4	4	4	4	5	5	5	5	6	5
<b>CULTURE AND RECREATION</b>										
Parks	67	68	69	70	70	70	70	72	71	72
Trails	22									
Commuter	N/A	22	22	23	23	23	23	23	23	23
Recreational	N/A	55	55	56	56	56	56	58	56	59
Park Shelter/Band Shells/Pavilions	10	12	15	17	18	18	18	24	20	21
Buildings	23	23	23	23	23	23	23	23	23	23
Vehicles (Including trailers)	58	59	59	59	108	112	112	115	112	112
<b>HOUSING &amp; COMMUNITY DEVELOPMENT</b>										
Vehicles	1	1	1	1	1	1	1	1	1	1

Source: City of Missoula Fixed Asset Accounting Module

Source: Various City of Missoula Departments

**CITY OF MISSOULA, MONTANA  
SPECIAL ASSESSMENTS BILLED AND COLLECTED  
Last Ten Fiscal Years**

<b>Fiscal Year</b>	<b>Assessments Billed</b>	<b>Current Assessments Paid</b>	<b>Percent Collected</b>	<b>Delinquent Assessments Paid</b>	<b>Total Assessments Paid</b>	<b>Penalty and Interest Paid</b>
2009	\$ 2,759,874	\$ 2,666,875	96.63%	\$ 109,340	\$ 2,776,215	\$ 11,539
2010	2,788,949	2,796,909	100.29%	136,607	2,933,516	14,999
2011	2,979,149	2,818,935	94.62%	159,941	2,978,876	18,139
2012	2,806,770	2,760,131	98.34%	160,377	2,920,508	16,070
2013	2,565,463	2,549,864	99.39%	51,388	2,601,252	8,058
2014	2,468,350	2,464,285	99.84%	19,211	2,483,496	11,121
2015	2,277,577	2,308,308	101.35%	8,655	2,316,963	8,359
2016	2,221,810	2,185,888	98.38%	5,286	2,191,174	4,989
2017	2,516,030	2,454,187	97.54%	35,599	2,489,786	4,337
2018	2,372,380	2,304,210	97.13%	58,556	2,362,766	4,321

Note: Property tax levies are set in August at the time the City budget is approved and billed November 1 by the County. Half of the taxes are due by November 30 and the other half by May 31. After those dates, the bills are delinquent (and a lien is placed on the property). The interest charged on delinquent taxes is one percent per month, with a two percent penalty.

Source: City of Missoula



CITY OF MISSOULA, MONTANA  
 SPECIAL IMPROVEMENT DISTRICT 512, 521 AND 522  
 REQUIRED CONTINUING DISCLOSURE

<b>Fiscal Year</b>	<b>Combined Market Value of All Districts</b>	<b>Average Ratio of Market Value to Assessments of Individual Parcels</b>	<b>Highest Ratio of Market Value to Assessments of Individual Parcels</b>	<b>Lowest Ratio of Market Value to Assessments of Individual Parcels</b>	<b>Median Ratio of Market Value to Assessments of Individual Parcels</b>
2009	\$ 234,349,048	954.97	6,111.87	20.47	160.49
2010	236,039,170	1,071.95	30,710.27	22.07	247.40
2011	215,320,296	1,296.29	51,474.37	40.46	823.26
2012	296,665,021	1,601.54	60,391.92	47.21	957.42
2013	343,465,684	43.42	43.42	43.42	43.42
2014	212,236,360	6,153.16	233,364.95	81.73	3,711.41
2015	275,246,631	7,937.62	244,392.70	10.65	5,041.41
2016	281,792,739	9,733.94	483,578.62	11.17	5,382.13
2017	228,884,766	14,537.55	260,053.13	972.25	10,318.56
2018	Completed	Completed	Completed	Completed	Completed

Source: City of Missoula and Missoula County Assessor's Office

CITY OF MISSOULA, MONTANA  
 SPECIAL IMPROVEMENT DISTRICTS  
 Current as of June 30, 2018

SID Number	Combined Market Value of All Districts	Average Ratio of Market Value to Assessments of Individual Parcels	Highest Ratio of Market Value to Assessments of Individual Parcels	Lowest Ratio of Market Value to Assessments of Individual Parcels	Median Ratio of Market Value to Assessments of Individual Parcels
FY2011 Total	\$ 2,698,949,941	1,042.61	42,350.68	0.03	341.14
FY2012 Total	3,105,150,944	893.51	26,719.49	1.76	429.81
FY2013 Total	3,365,098,815	352.35	40,261.28	4.87	110.58
FY2014 Total	1,497,286,124	1,737.80	233,364.95	0.22	442.92
FY2015 Total	2,373,479,490	2,861.51	244,392.70	0.17	795.46
FY2016 Total	2,446,652,631	4,299.09	1,131,599.24	0.17	832.07
FY2017 Total	2,320,102,073	5,830.90	310,647.67	0.18	1,654.98
0524	719,226,897	278.65	10,260.7	4.47	186.96
0525	29,575,696	98.45	452.8	21.66	56.04
0526	106,769,459	85.42	1,267.26	4.71	54.82
0532	64,124,627	151.03	492.37	30.86	149.88
0533	11,250,663	146.19	652.08	31.91	57.96
0534	13,872,524	65.78	120.74	23.70	63.81
0536	24,217,712	64.47	121.89	4.13	62.63
0540	112,760,486	107.87	184.31	62.77	103.18
0541	544,138,454	880.21	4,733.8	0.02	804.20
0544	100,732,672	55.50	239.72	6.87	53.15
0545	14,613,388	951.29	5,596.12	238.46	833.10
0546	12,166,671	891.98	1,146.13	354.89	889.36
0548	9,337,312	44.45	90.5	0.20	48.70
0549	202,646,551	144.47	536.04	3.05	128.37
CS08	8,728,611	100.09	330.82	11.21	88.76
CS09	7,712,403	50.18	165.94	6.86	32.87
CS10	10,343,042	52.30	277.27	7.80	40.54
CS12	61,572,069	360.82	5,815.79	13.47	155.94
CS13	67,392,392	907.53	11,208.76	322.00	358.03
CS15	26,426,945	185.54	2,901.36	8.99	91.04
CS16	17,586,495	272.04	4,035.16	8.34	74.74
CS17	15,213,947	333.20	7,428.43	4.83	70.00
CS18	22,290,541	372.03	4,201.73	15.15	132.39
CS346	16,131,394	41.02	120.31	15.58	24.41
FY2018 Total	\$ 2,218,830,951	276.69	11,208.76	0.02	81.75

Source: City of Missoula and Missoula County Assessor's Office

^ First year to disclose information for all City SID's is FY 2011

\*Not all info available at time of budget publication. See FY 2016 CAFR

**CITY OF MISSOULA, MONTANA**  
**MISSOULA PARKING COMMISSION RATES AND FEES**  
 Last Ten Fiscal Years

<b>Fiscal Year</b>	<b>On-Street Hourly Parking</b>	<b>Garage Hourly Parking</b>	<b>Parking Garage Lease Space Range</b>	<b>Off-Street Lease Space Range</b>	<b>Average Off-Street and Garage Lease Rate</b>
2009	\$ 0.50	\$ 0.25	55.00 TO 65.00	30.00 TO 50.00	\$ 45.00
2010	0.50	0.25	55.00 TO 65.00	30.00 TO 50.00	45.00
2011	0.50	1.00	65.00 TO 75.00	35.00 TO 55.00	49.00
2012	0.50	1.00	65.00 TO 75.00	30.00 TO 55.00	51.00
2013	0.50	1.00	65.00 TO 75.00	30.00 TO 55.00	51.00
2014	0.50	1.00	65.00 TO 75.00	30.00 TO 55.00	53.00
2015	0.50	1.00	65.00 TO 75.00	30.00 TO 55.00	53.00
2016	0.50 - 4.00	1.00	65.00 TO 75.00	30.00 TO 55.00	56.25
2017	0.50 - 4.00	1.00	75.00 TO 85.00	40.00 TO 60.00	65.00
2018	1.00 - 4.00	1.00	75.00 TO 85.00	40.00 TO 70.00	65.00

Source: Missoula Parking Commission

\* First year of new LUKE on street parking meter machines

CITY OF MISSOULA, MONTANA  
 MISSOULA PARKING COMMISSION OPERATIONS AND FACILITIES  
 Last Ten Fiscal Years

Fiscal Year	Parking Meters	Leased Parking Spaces	Parking Lots Throughout Downtown Missoula	Leased Parking Garage Spaces	University District Parking Permits	Percentage of Parking Ticket Revenue	Percentage of Parking Meter Revenue	Percentage of Garage Parking Revenue	Percentage of Leased Parking Revenue other than Parking Garage	Percentage of Other Revenue
2009	1,129	800	12	257	1,011	19%	35%	16%	21%	10%
2010	1,061	800	12	257	1,166	18%	37%	18%	23%	4%
2011	1,061	800	12	257	1,198	18%	37%	18%	23%	4%
2012	1,015	855	12	257	1,012	17%	38%	14%	29%	3%
2013	1,015	890	12	460	1,025	16%	34%	16%	32%	1%
2014	1,015	1,133	12	522	870	14%	33%	19%	31%	1%
2015	1,061	1,275	15	523	918	12%	38%	21%	27%	3%
2016*	134	1,226	15	529	821	8%	39%	25%	24%	4%
2017	134	1,244	15	541	760	10%	46%	26%	16%	2%
2018	135	1,262	14	439	988	9%	49%	17%	20%	4%

Source: Missoula Parking Commission

\* FY2016 first year of LUKE on street parking meter machines

**CITY OF MISSOULA, MONTANA  
 COMPONENT UNIT MISSOULA REDEVELOPMENT AGENCY  
 HISTORICAL VALUE OF TAX INCREMENT DISTRICTS  
 For the Last Ten Fiscal Years**

**Urban Renewal District II (1-1C, 4-1C)**

Fiscal Year	Personal Property		Total Taxable Value
	Personal Attached Taxable Value	(Unattached) Taxable Value	
2009	\$ 3,162,083	\$ 358,422	\$ 3,520,505
2010	3,302,146	318,269	3,620,415
2011	3,415,110	336,897	3,752,007
2012	3,371,473	309,233	3,680,706
2013	3,379,411	262,535	3,641,946
2014	3,436,681	249,282	3,685,963
2015	3,586,154	216,449	3,802,603
2016	3,696,539	195,043	3,891,582
2017	3,698,497	250,016	3,948,513
2018	4,477,327	265,612	4,742,939

**Urban Renewal District III (1-1D)**

Fiscal Year	Real Property & Personal Attached	Personal Property	Total Taxable Value
	Taxable Value	(Unattached) Taxable Value	
2009	\$ 8,468,861	\$ 468,589	\$ 8,937,450
2010	9,027,375	514,481	9,541,856
2011	8,939,540	568,590	9,508,130
2012	9,118,547	552,532	9,671,079
2013	8,797,853	381,195	9,179,048
2014	8,964,779	393,662	9,358,441
2015	8,293,647	177,106	8,470,753
2016	8,540,441	230,608	8,771,049
2017	9,818,839	279,493	10,098,332
2018	10,846,954	355,738	11,202,692

**Front Street URD (1-1F)**

Fiscal Year	Real Property & Personal Attached	Personal Property	Total Taxable Value
	Taxable Value	(Unattached) Taxable Value	
2009	\$ 1,362,450	\$ 51,225	\$ 1,413,675
2010	1,571,488	50,604	1,622,092
2011	2,105,933	124,059	2,229,992
2012	1,908,040	121,154	2,029,194
2013	1,903,163	83,983	1,987,146
2014	1,885,618	78,619	1,964,237
2015	1,911,595	38,792	1,950,387
2016	1,804,310	34,789	1,839,099
2017	1,785,638	33,176	1,818,814
2018	1,881,011	34,435	1,915,446

**CITY OF MISSOULA, MONTANA  
 COMPONENT UNIT MISSOULA REDEVELOPMENT AGENCY  
 HISTORICAL VALUE OF TAX INCREMENT DISTRICTS  
 For the Last Ten Fiscal Years**

**Riverfront Triangle URD**

<b>Fiscal Year</b>	<b>Real Property &amp; Personal Attached Taxable Value</b>	<b>Personal Property (Unattached) Taxable Value</b>	<b>Total Taxable Value</b>
2010 <sup>^</sup>	\$ 133,871	\$ —	\$ 133,871
2011	153,701	36,236	189,937
2012	132,286	36,579	168,865
2013	112,584	279	112,863
2014	113,735	3,259	116,994
2015	119,533	1,337	120,870
2016	130,687	2,196	132,883
2017	111,140	1,764	112,904
2018	344,129	1,399	345,528

**Hellgate URD (1-1H) #**

<b>Fiscal Year</b>	<b>Real Property &amp; Personal Attached Taxable Value</b>	<b>Personal Property (Unattached) Taxable Value</b>	<b>Total Taxable Value</b>
2016 <sup>#</sup>	\$ 960,528	\$ —	\$ 960,528
2017	982,521	257	\$ 982,778
2018	1,162,396	2,433	\$ 1,164,829

**North Reserve / Scott Street URD (1-1N, 4-1N) #**

<b>Fiscal Year</b>	<b>Real Property &amp; Personal Attached Taxable Value</b>	<b>Personal Property (Unattached) Taxable Value</b>	<b>Total Taxable Value</b>
2016 <sup>#</sup>	\$ 1,563,956	\$ —	\$ 1,563,956
2017	1,563,249	378	\$ 1,563,627
2018	2,332,473	4,653	\$ 2,337,126

\* First year data available as district was created in FY 2009  
<sup>^</sup> First year data available as district was created in FY 2010  
<sup>#</sup> First year data available as district was created in FY 2016

**CITY OF MISSOULA, MONTANA  
 COMPONENT UNIT MISSOULA REDEVELOPMENT AGENCY  
 TAXABLE VALUE OF DISTRICTS COMPARED TO CITY  
 For the Last Ten Fiscal Years**

**Urban Renewal District II**

<b>Fiscal Year</b>	<b>Total City Taxable Value</b>	<b>Total Taxable Value Within Tax Increment District</b>	<b>Incremental Taxable Value Within Tax Increment District</b>	<b>Tax Increment as Percentage of City's Taxable Value</b>
2010	\$ 107,159,214	\$ 3,620,415	\$ 1,760,592	1.6%
2011	111,474,037	3,752,007	1,892,184	1.7%
2012	112,993,774	3,680,706	1,820,883	1.6%
2013	112,697,955	3,641,946	1,782,123	1.6%
2014	109,336,360	3,685,963	1,826,140	1.7%
2015	112,624,034	3,802,603	1,942,780	1.7%
2016	115,856,258	3,891,582	2,031,759	1.8%
2017	117,701,984	3,948,513	2,088,690	1.8%
2018	129,343,925	4,742,939	2,883,116	2.2%
2019	129,852,557	4,600,200	2,740,377	2.1%

**Urban Renewal District III**

<b>Fiscal Year</b>	<b>Total City Taxable Value</b>	<b>Total Taxable Value Within Tax Increment District</b>	<b>Incremental Taxable Value Within Tax Increment District</b>	<b>Tax Increment as Percentage of City's Taxable Value</b>
2010	\$ 107,159,214	\$ 9,541,856	\$ 2,537,510	2.4%
2011	111,474,037	9,508,130	2,503,784	2.2%
2012	112,993,774	9,671,079	2,666,733	2.4%
2013	112,697,955	9,179,048	2,174,702	1.9%
2014	109,336,360	9,358,441	2,355,095	2.2%
2015	112,624,034	8,470,753	1,466,407	1.3%
2016	115,856,258	8,771,049	1,766,703	1.5%
2017	117,701,984	10,131,604	1,958,760	1.7%
2018	129,343,925	11,202,692	3,029,848	2.3%
2019	129,852,557	11,134,939	2,962,095	2.3%

**Front Street URD**

<b>Fiscal Year</b>	<b>Total City Taxable Value</b>	<b>Total Taxable Value Within Tax Increment District</b>	<b>Incremental Taxable Value Within Tax Increment District</b>	<b>Tax Increment as Percentage of City's Taxable Value</b>
2010	\$ 107,159,214	\$ 1,622,092	\$ 209,057	0.2%
2011	111,474,037	2,229,992	816,957	0.7%
2012	112,993,774	2,029,197	616,159	0.5%
2013	112,697,955	1,987,146	574,111	0.5%
2014	109,336,360	1,964,237	551,202	0.5%
2015	112,624,034	1,950,387	537,352	0.5%
2016	115,856,258	1,839,099	426,064	0.4%
2017	117,701,984	1,828,962	415,927	0.4%
2018	129,343,925	1,915,446	502,411	0.4%
2019	129,852,557	1,931,931	518,896	0.4%

**CITY OF MISSOULA, MONTANA  
 COMPONENT UNIT MISSOULA REDEVELOPMENT AGENCY  
 TAXABLE VALUE OF DISTRICTS COMPARED TO CITY  
 For the Last Ten Fiscal Years**

**Riverfront Triangle**

<b>Fiscal Year</b>	<b>Total City Taxable Value</b>	<b>Total Taxable Value Within Tax Increment District</b>	<b>Incremental Taxable Value Within Tax Increment District</b>	<b>Tax Increment as Percentage of City's Taxable Value</b>
2010	\$ 104,408,018	\$ 133,871	\$ —	0.0%
2011	111,474,037	189,937	32,079	0.0%
2012	112,993,774	168,865	11,007	0.0%
2013	112,697,955	112,863	—	0.0%
2014	109,336,360	116,994	—	0.0%
2015	112,624,034	120,870	—	0.0%
2016	115,856,258	132,883	—	0.0%
2017	117,701,984	112,904	—	0.0%
2018	129,343,925	345,528	187,670	0.1%
2019	129,852,557	702,205	544,347	0.4%

**Hellgate Urban Renewal District #**

<b>Fiscal Year</b>	<b>Total City Taxable Value</b>	<b>Total Taxable Value Within Tax Increment District</b>	<b>Incremental Taxable Value Within Tax Increment District</b>	<b>Tax Increment as Percentage of City's Taxable Value</b>
2016 #	\$ 115,856,258	\$ 960,528	\$ —	0.0%
2017	117,701,984	985,733	—	0.0%
2018	129,343,925	1,164,829	139,381	0.1%
2019	129,852,557	1,175,577	150,129	0.1%

**North Reserve / Scott Street Urban Renewal District #**

<b>Fiscal Year</b>	<b>Total City Taxable Value</b>	<b>Total Taxable Value Within Tax Increment District</b>	<b>Incremental Taxable Value Within Tax Increment District</b>	<b>Tax Increment as Percentage of City's Taxable Value</b>
2016 #	\$ 115,855,770	\$ 1,563,946	\$ 72,741	0.1%
2017	117,701,984	1,567,859	106,201	0.1%
2018	129,343,925	2,337,126	845,921	0.7%
2019	129,852,557	2,698,231	1,207,026	0.9%

# First year data available as district was created in FY 2016  
 Source: City of Missoula and Missoula County Assessor's Office



CITY OF MISSOULA, MONTANA  
 COMPONENT UNIT MISSOULA REDEVELOPMENT AGENCY  
 TRENDS IN PROPERTY VALUATION IN CITY  
 For the Last Ten Fiscal Years

Fiscal Year	City Appraised Value	City Taxable Value (includes district)	Incremental Taxable Value District II	Incremental Taxable Value District III	Incremental Taxable Value Front Street URD	Incremental Taxable Value Riverfront Triangle URD	Hellgate Urban Renewal District	North Reserve / Scott Street Urban Renewal District	City Taxable Value (without district)
2010	\$ 3,684,720,974	\$ 107,159,214	\$ 1,760,592	\$ 2,537,510	\$ 209,057	\$ —	\$ —	\$ —	\$ 102,652,055
2011	3,965,146,053	111,474,037	1,892,184	2,503,784	816,957	32,079	—	—	106,229,033
2012	4,140,685,284	112,993,774	1,820,883	2,666,733	616,159	11,007	—	—	107,878,992
2013	4,110,699,383	112,697,955	1,782,123	2,174,702	574,111	—	—	—	108,167,019
2014	4,305,020,382	114,068,797	1,826,140	2,355,095	551,202	—	—	—	109,336,360
2015	4,406,017,003	112,624,034	1,942,780	1,466,407	537,352	—	—	—	108,677,495
2016	7,303,174,348	115,856,258	2,031,759	1,766,703	426,064	—	—	72,741	111,558,991
2017	7,390,919,522	117,701,984	2,088,690	1,958,760	415,927	—	—	106,201	113,132,406
2018	8,176,081,623	129,343,925	2,883,116	3,029,848	502,411	187,670	139,381	845,921	121,755,578
2019	8,234,651,575	129,852,557	2,740,377	2,962,095	518,896	544,347	150,129	1,207,026	121,729,687

Source: City of Missoula and Missoula County Assessor's Office

**CITY OF MISSOULA, MONTANA  
MISSOULA REDEVELOPMENT AGENCY  
COMPONENT UNIT TAX INCREMENT REVENUE BOND COVERAGE  
URD II: MILLSITE \$3.6M BONDS**

FISCAL YEAR	PROJECTED PLEDGED TAX INCREMENT	MAXIMUM PROJECTED DEBT	COVERAGE
2010			
With State Entitlement	1,369,859	250,400	547%
Without State Entitlement	1,113,237	250,400	445%
2011			
With State Entitlement	1,493,995	250,400	597%
Without State Entitlement	1,210,373	250,400	483%
2012			
With State Entitlement	1,429,000 A	250,400 B	571%
Without State Entitlement	1,173,740	250,400	469%
2013			
With State Entitlement	1,474,944 C	250,400	589%
Without State Entitlement	1,157,656	250,400	462%
2014			
With State Entitlement	1,522,881	676,428 D	225%
Without State Entitlement	1,208,093	676,428	179%
2015			
With State Entitlement	1,668,283 E	676,428	247%
Without State Entitlement	1,225,692	676,428	181%
2016			
With State Entitlement	1,713,113	676,428	253%
Without State Entitlement	1,270,522	676,428	188%
2017			
With State Entitlement	2,274,167	676,428	336%
Without State Entitlement	1,831,576	676,428	271%
2018			
With State Entitlement	3,089,882	676,428	457%
Without State Entitlement	2,647,291	676,428	391%
2019			
With State Entitlement	2,615,825	674,645	388%
Without State Entitlement	2,178,234	674,645	323%

A State Entitlement amount reduced by 10% to \$255,260 by 2011 Legislative action

B Civic Stadium Note issued February 2012 is subordinate to the Series 2006 bonds so not included in Max. Projected DS. Civic Stadium DS is \$500K Max Annual through FY15.

C Personal Property Tax Reduction Reimbursement approved by 2011 Legislature under SB372. Annual Reimbursement is \$62,028.

D Series 2013 \$5.75M Bond issued March 2013 on parity with Series 2006 Bond. Max. Annual DS \$426,028

E Personal Property Tax Reduction Reimbursement approved by 2013 Legislature under SB96. Annual Reimbursement is \$125,303.

Source: City of Missoula Annual Reports

CITY OF MISSOULA, MONTANA  
 PROPERTY TAX LEVIES IN THE URBAN RENEWAL DISTRICT II  
 Last Ten Fiscal Years

	Fiscal Year									
	FY '10	FY '11	FY '12	FY '13	FY '14	FY '15	FY '16	FY '17	FY '18	FY '19
	2009/10	2010/11	2011/12	2012/13	2013/14	2014/15	2015/16	2016/17	2017/18	2018/19
<b>Taxing Authority</b>										
State University Mill Levy	6.00	6.00	6.00	6.00	6.00	6.00	6.00	6.00	6.00	6.00
State Statewide School Equalization	26.92	26.60	26.28	26.55	26.15	19.23	18.78	18.44	15.26	16.54
General Countywide School Levy	54.71	53.28	51.18	51.46	52.68	50.80	49.00	47.82	38.88	42.18
Missoula County	72.66	72.00	72.24	74.51	75.71	76.98	78.86	79.44	66.56	74.10
Missoula High school District	39.98	38.44	38.76	36.94	36.36	34.99	35.27	39.19	39.34	41.35
City of Missoula	116.33	116.17	118.27	123.75	122.64	118.10	118.70	119.89	96.25	100.11
Urban Transportation District	8.52	8.47	8.97	10.02	10.60	16.47	19.00	18.66	14.03	15.41
Increment 1-1C *	353.75	359.55	372.64	369.31	387.47	419.86	440.51	475.22	569.62	537.83
Subtotal	<u>678.87</u>	<u>680.51</u>	<u>694.34</u>	<u>698.54</u>	<u>717.61</u>	<u>742.43</u>	<u>766.12</u>	<u>804.66</u>	<u>845.94</u>	<u>833.52</u>
School District 1-1C	74.65	72.88	73.61	72.88	75.01	72.29	70.29	83.00	81.09	89.31
Total levies for property in the District lying within School District 1-1C	753.52	753.39	767.95	771.42	792.62	814.72	836.41	887.66	927.03	922.83
	FY '10	FY '11	FY '12	FY '13	FY '14	FY '15	FY '16	FY '17	FY '18	FY '19
<b>Taxing Authority</b>	2009/10	2010/11	2011/12	2012/13	2013/14	2014/15	2015/16	2016/17	2017/18	2018/19
State University Mill Levy	6.00	6.00	6.00	6.00	6.00	6.00	6.00	6.00	6.00	6.00
State Statewide School Equalization	24.90	22.73	25.87	25.85	26.37	21.37	20.96	18.89	18.17	18.90
General Countywide School Levy	49.44	43.27	50.14	49.71	53.27	56.44	54.68	49.00	46.29	48.20
Missoula County	65.66	58.47	70.77	71.98	76.55	85.54	88.01	81.40	79.23	84.68
Missoula High school District	36.13	31.21	37.97	35.69	36.76	38.88	39.36	40.16	46.83	47.25
City of Missoula	105.12	94.34	115.86	119.55	124.01	131.23	132.48	122.85	114.58	114.40
Urban Transportation District	7.70	6.88	8.79	9.68	10.72	18.31	21.21	19.12	16.71	17.62
Increment 4-1C *	398.69	441.03	384.35	384.05	382.13	378.47	387.52	446.55	490.85	471.41
Subtotal	<u>693.64</u>	<u>703.93</u>	<u>699.75</u>	<u>702.51</u>	<u>715.81</u>	<u>736.24</u>	<u>750.22</u>	<u>783.97</u>	<u>818.66</u>	<u>808.46</u>
School District 4-1C	74.27	66.18	75.98	71.89	74.84	82.45	69.94	68.36	86.69	91.04
Total levies for property in the District lying within School District	767.91	770.11	775.73	774.40	790.65	818.69	820.16	852.33	905.35	899.50

\* Note: Tax Increment districts are not taxing authorities and do not levy taxes, i.e. levy mills. Total incremental taxable value can be viewed as a percentage of total taxable value in a district, from information provided by the Montana Department of Revenue. For purposes of disclosure, this report shows that same percentage broken down as a portion of the total mills levied in the district.

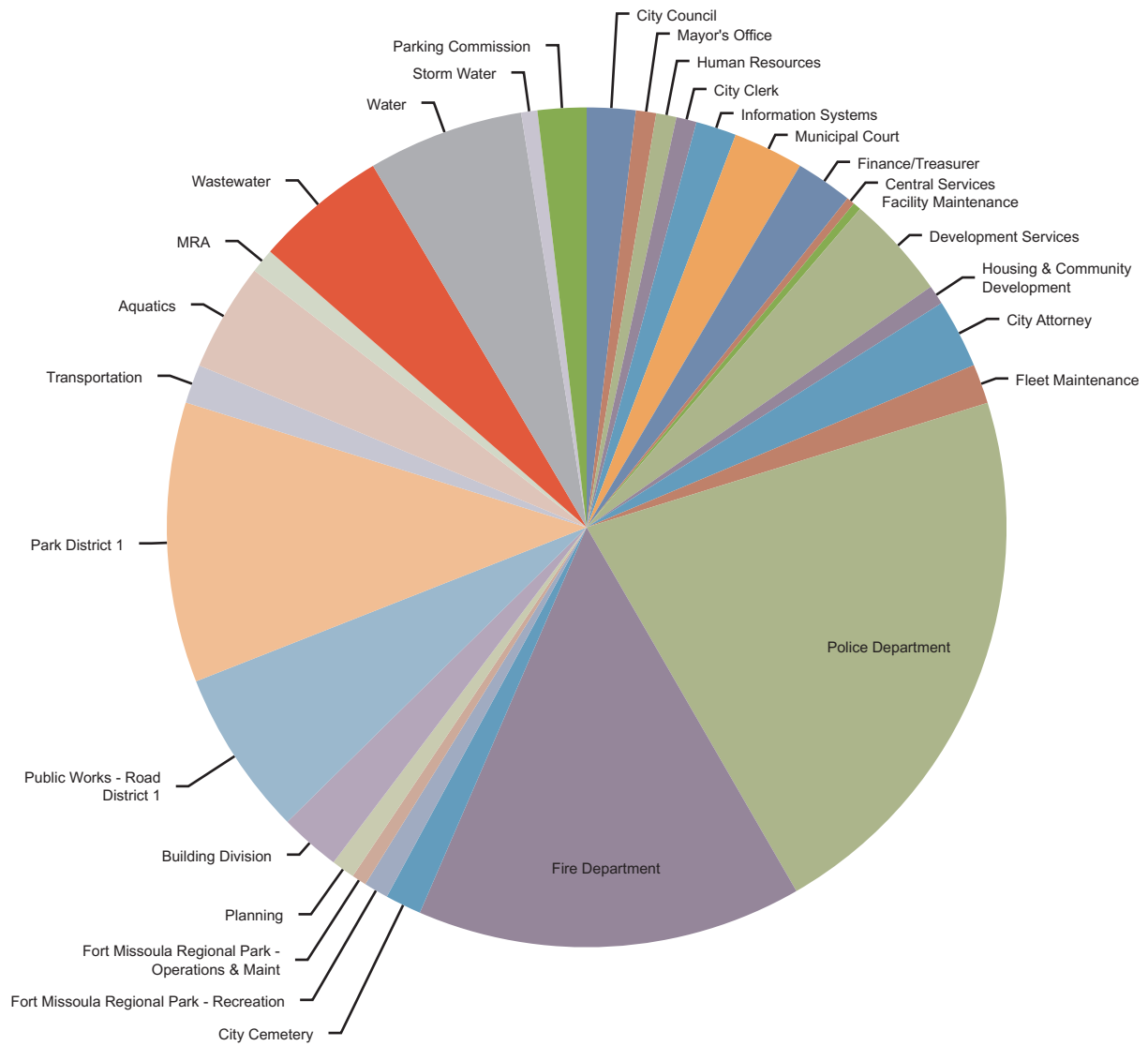
**CITY OF MISSOULA, MONTANA**  
**Urban Renewal District II - Top 10 Taxpayers**  
**Tax Year 2018 (FY19)**

	<b>Taxpayer</b>	<b>Type of Business</b>	<b>2018</b>	<b>2018</b>	<b>2018</b>
			<b>Total Tax</b>	<b>Market Value</b>	<b>Taxable Value</b>
1	MW Corso Associates	Residential - Apartments	\$ 255,284	\$ 19,061,700	\$ 257,332
2	OSD Building #1 LLC	Residential/Commercial Developers	165,351	12,147,536	166,740
3	Millsite Revitalization Project LLC	Residential/Commercial Developers	154,061	8,469,180	154,673
4	Nutritional Laboratories	Food Supplement Manufacturer	141,367	8,872,808	147,466
5	Spirit Master Funding IX LLC	Grocery Store (real property)	136,282	7,064,265	133,515
6	Good Food Store Inc	Grocery Store	125,404	6,867,506	125,076
7	Gregg Mario Company LLC	Residential - Apartments	110,940	8,285,800	111,858
8	Blackfoot Telephone Co-op Inc	Co-op Communications	100,754	3,731,257	111,938
9	Missoula Electric Co-op Inc	Co-op Electric Utility	92,660	3,326,675	99,801
10	Engineering Support Services LLC	Owners	85,739	4,683,762	88,521
			<b>Total</b>	<b>\$ 82,510,489</b>	<b>\$ 1,396,920</b>

CITY OF MISSOULA  
 SCHEDULE OF FTE TRENDS  
 FY 2015 - 2019

	2015	2016	2017	2018	2019
	# FTE	# FTE	# FTE	# FTE	Adopted
<b>City Departments</b>					
City Council	12.00	12.00	12.00	12.00	12.00
Mayor's Office	5.00	5.00	5.00	5.00	5.00
Human Resources	4.00	4.00	4.00	5.00	5.00
City Clerk	5.00	5.00	5.00	5.00	5.00
Information Systems	6.00	8.00	8.00	8.00	10.00
Municipal Court	17.85	17.85	17.85	17.35	17.35
Finance/Treasurer	15.00	15.00	16.00	15.00	14.00
Central Services	3.00	3.00	3.00	2.00	2.00
Facility Maintenance	—	—	—	2.00	2.00
Development Services	23.50	23.75	23.87	25.60	25.60
Housing & Community Development	—	—	3.00	4.75	4.75
GIS	3.00	—	—	—	—
City Attorney	16.00	16.00	16.00	17.00	17.00
Public Works - Operations	8.42	8.42	8.53	8.53	—
Street Division	28.79	28.79	28.79	28.00	—
Fleet Maintenance	10.50	10.50	10.50	9.75	9.75
Police Department	130.00	132.00	134.50	134.50	137.50
Fire Department	95.00	95.00	95.00	95.00	95.00
City Cemetery	8.92	8.92	8.91	8.91	8.91
Parks and Recreation	57.00	57.60	59.60	59.60	—
<b>Total General</b>	<b>448.98</b>	<b>450.83</b>	<b>459.55</b>	<b>462.99</b>	<b>370.86</b>
<b>General Fund % Increase</b>	<b>7.24%</b>	<b>0.41%</b>	<b>1.93%</b>	<b>0.75%</b>	<b>-19.90%</b>
<b>General Fund Special &amp; Special Revenue Funds</b>					
Fort Missoula Regional Park Recreation	—	—	1.75	7.46	6.05
Fort Missoula Regional Park Ops & Maint	—	—	—	—	3.62
Planning	4.50	4.50	4.50	5.50	5.76
Building Division	11.10	12.00	11.88	13.40	14.90
Road District 1	0.25	0.75	2.66	4.38	40.96
Parks District 1	1.98	2.73	7.22	8.49	69.07
Transportation	8.40	9.57	9.57	9.57	9.57
<b>Total Special District</b>	<b>26.23</b>	<b>29.55</b>	<b>37.58</b>	<b>48.80</b>	<b>149.93</b>
<b>Enterprise Funds</b>					
Aquatics	25.45	23.88	23.77	24.13	26.71
MRA	6.00	6.00	6.00	6.00	6.00
Wastewater	22.50	24.00	24.00	30.16	32.66
Water	—	—	—	32.00	38.42
Storm Water	—	—	2.00	4.00	4.00
Parking Commission	11.50	11.50	11.50	12.50	12.00
<b>Total Enterprise</b>	<b>65.45</b>	<b>65.38</b>	<b>67.27</b>	<b>108.79</b>	<b>119.79</b>
<b>Non-General Fund % Increase</b>	<b>2.17%</b>	<b>3.54%</b>	<b>10.45%</b>	<b>50.30%</b>	<b>71.15%</b>
<b>Total For City Departments</b>	<b>540.66</b>	<b>545.76</b>	<b>564.40</b>	<b>620.58</b>	<b>640.58</b>

### City FTE Count by Department - FY 2019



### City FTE Count by Function - FY 2019

