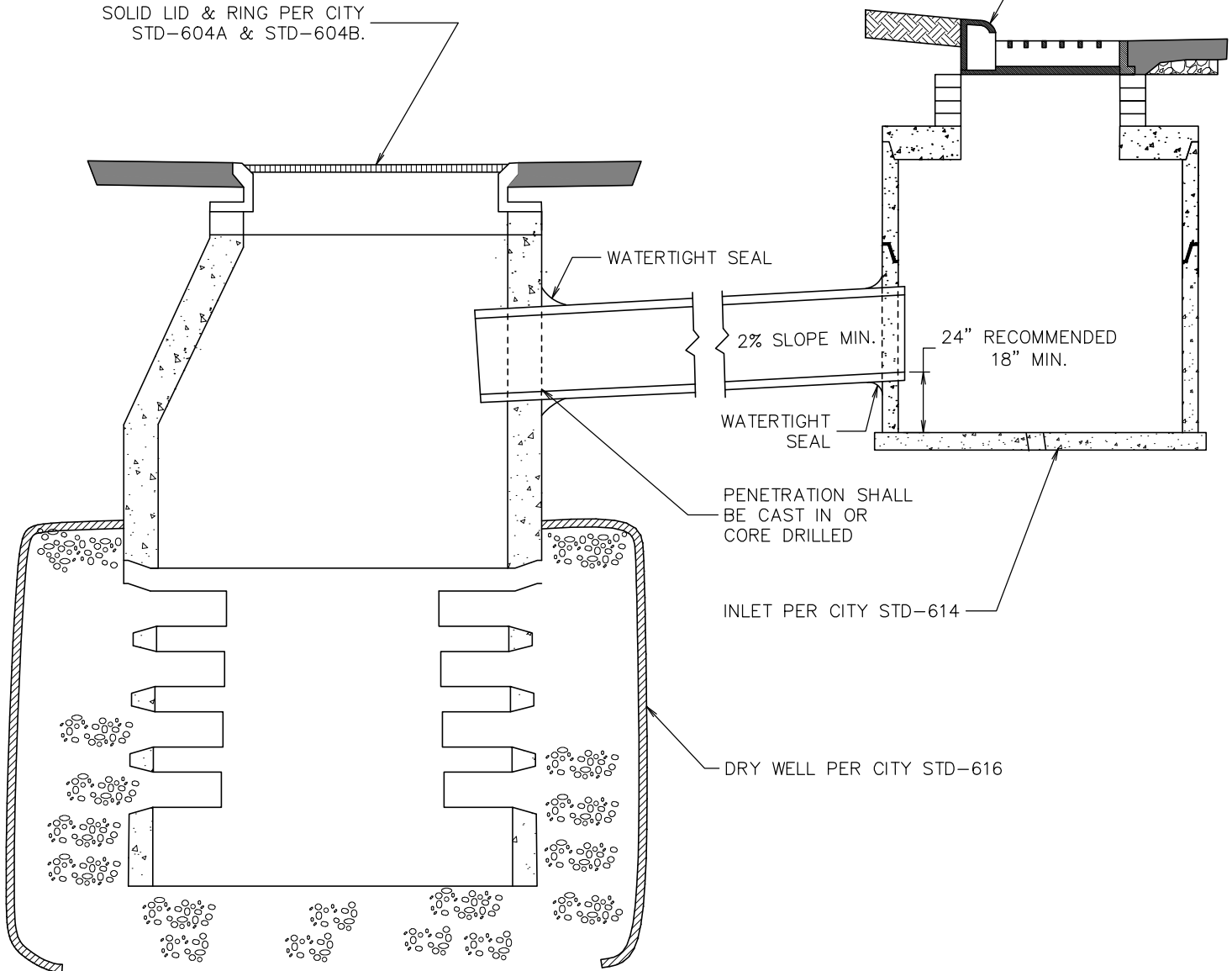


FOR RING AND GRATE REFER TO CITY STD-604A THRU 604D. WHEN INLET IS INSTALLED IN CURB REFER TO CITY STD-600 & STD-601.

SOLID LID & RING PER CITY STD-604A & STD-604B.



December 2021



Engineering Division

### Standard Remote Dry Well

Approved By  
Utility Engineer  
Andy Schultz, PE

Adopted: 11/15/2021  
Revised:

**STD - 617**