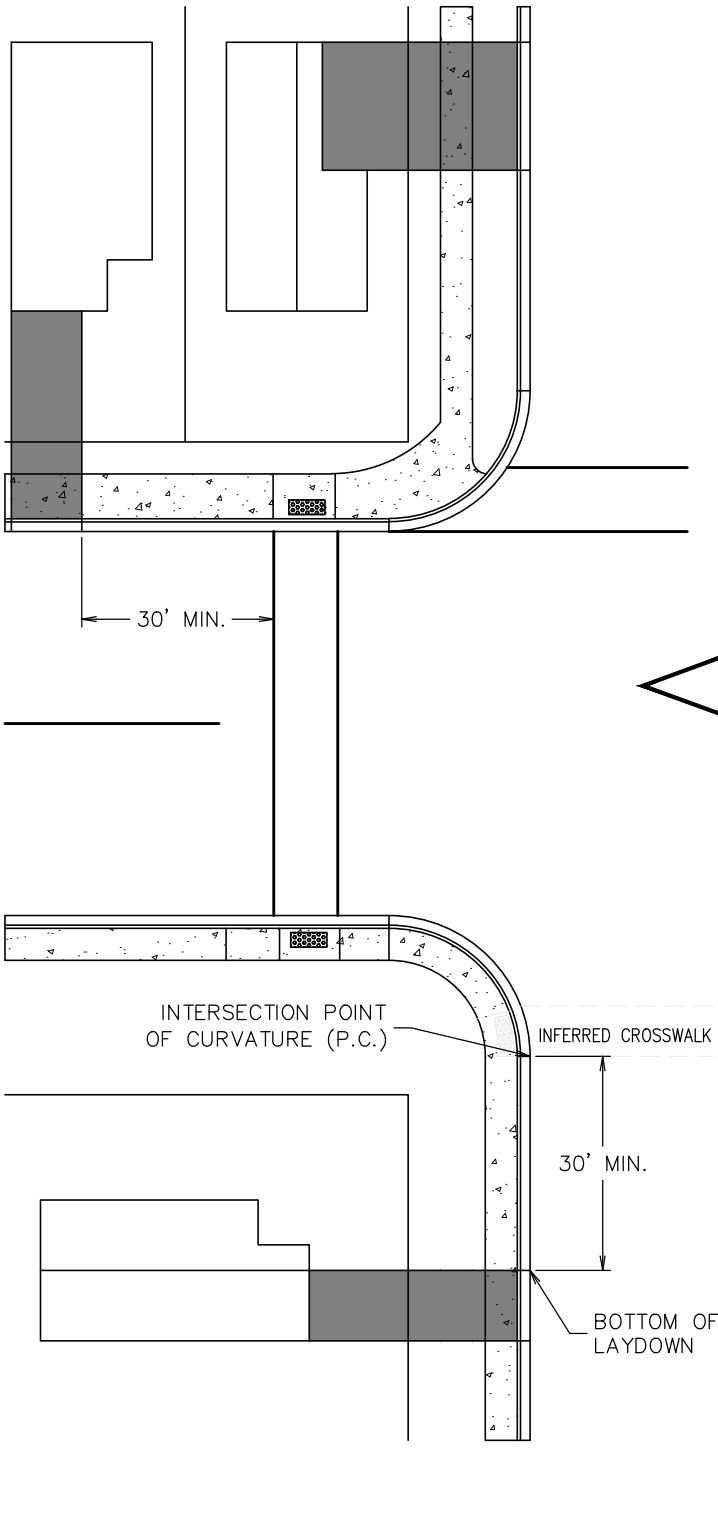
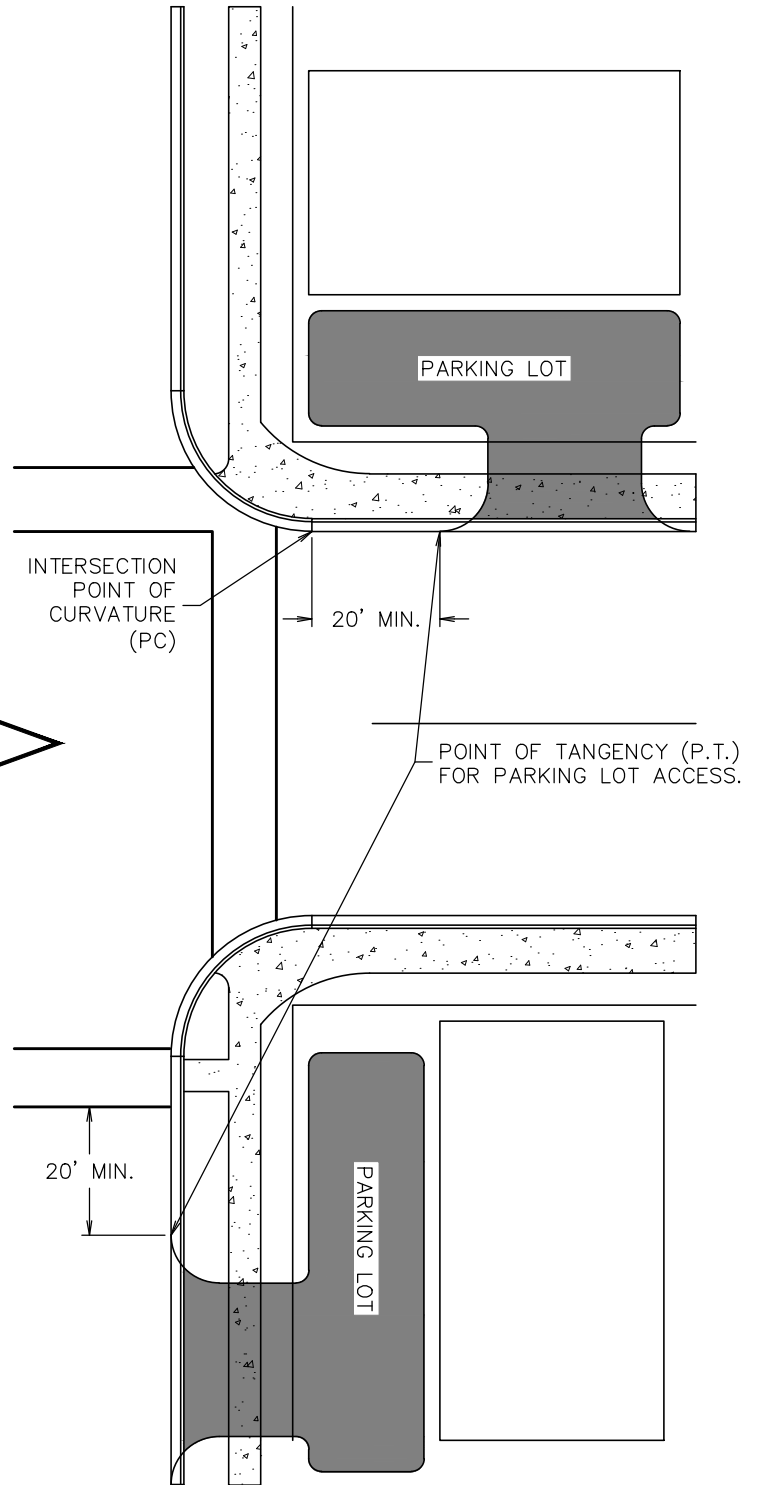


BACKING INTO PUBLIC  
RIGHT OF WAY.



DRIVING FORWARDS  
ONTO PUBLIC  
RIGHT OF WAY.



December 2021



Engineering Division

Typical Driveway Locations

Approved By  
City Engineer  
Kevin J. Slovark

Adopted: 01/10/2006  
Revised: 04/06/2017

STD - 770