

# Beckwith St. Water Main Replacement Project Street Closure Map



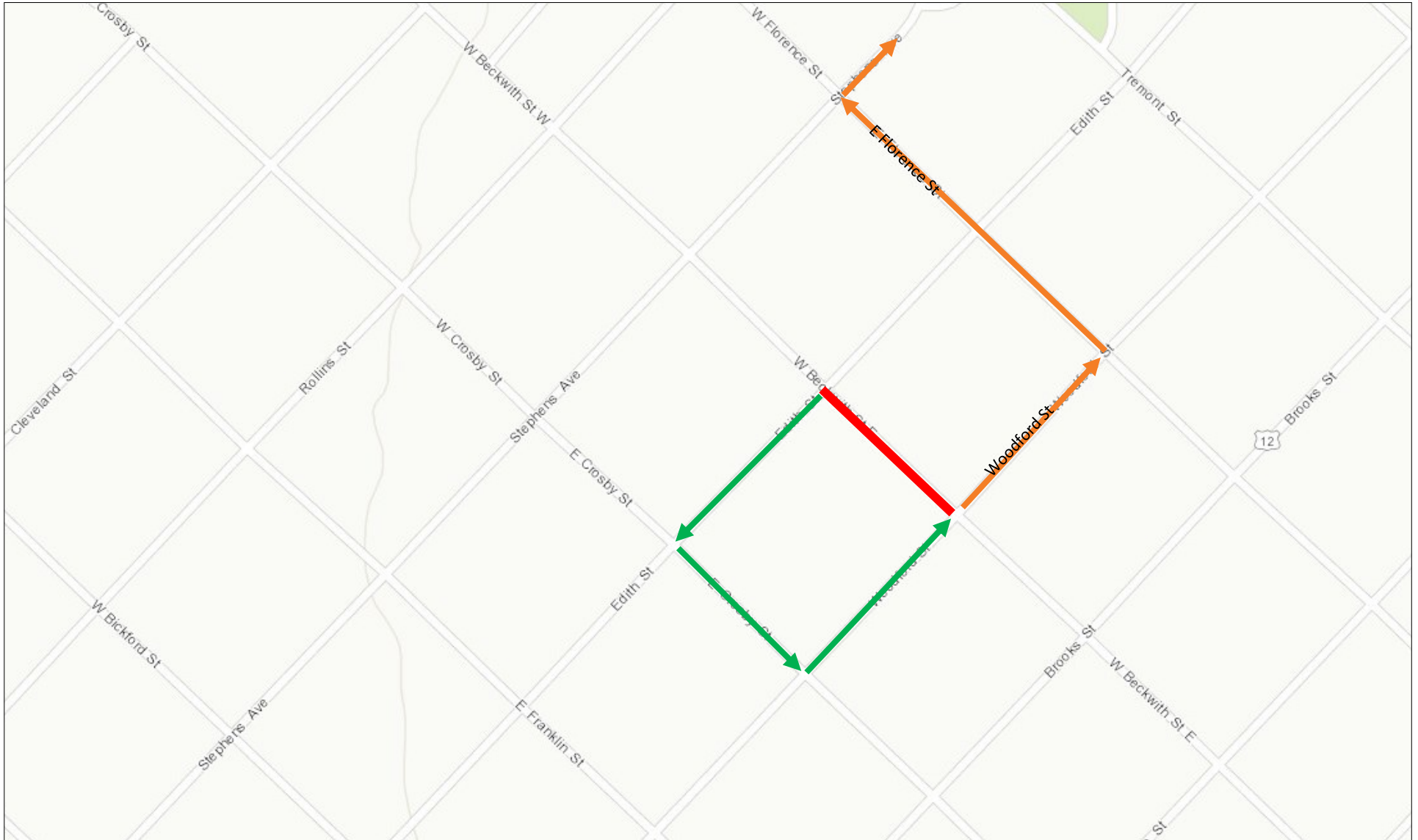
Street Closure Area 

*Beckwith St. will be closed to all traffic during construction, but local traffic will be allowed once excavation work is completed. Through traffic will not be allowed until paving is completed. Work will begin at Woodford Ave. and move to the west.*



# Beckwith St. Water Main Replacement Project

## Street Detour Map—Closure Woodford Ave. to Edith St.



Street Closure 

Northbound Detour Route 

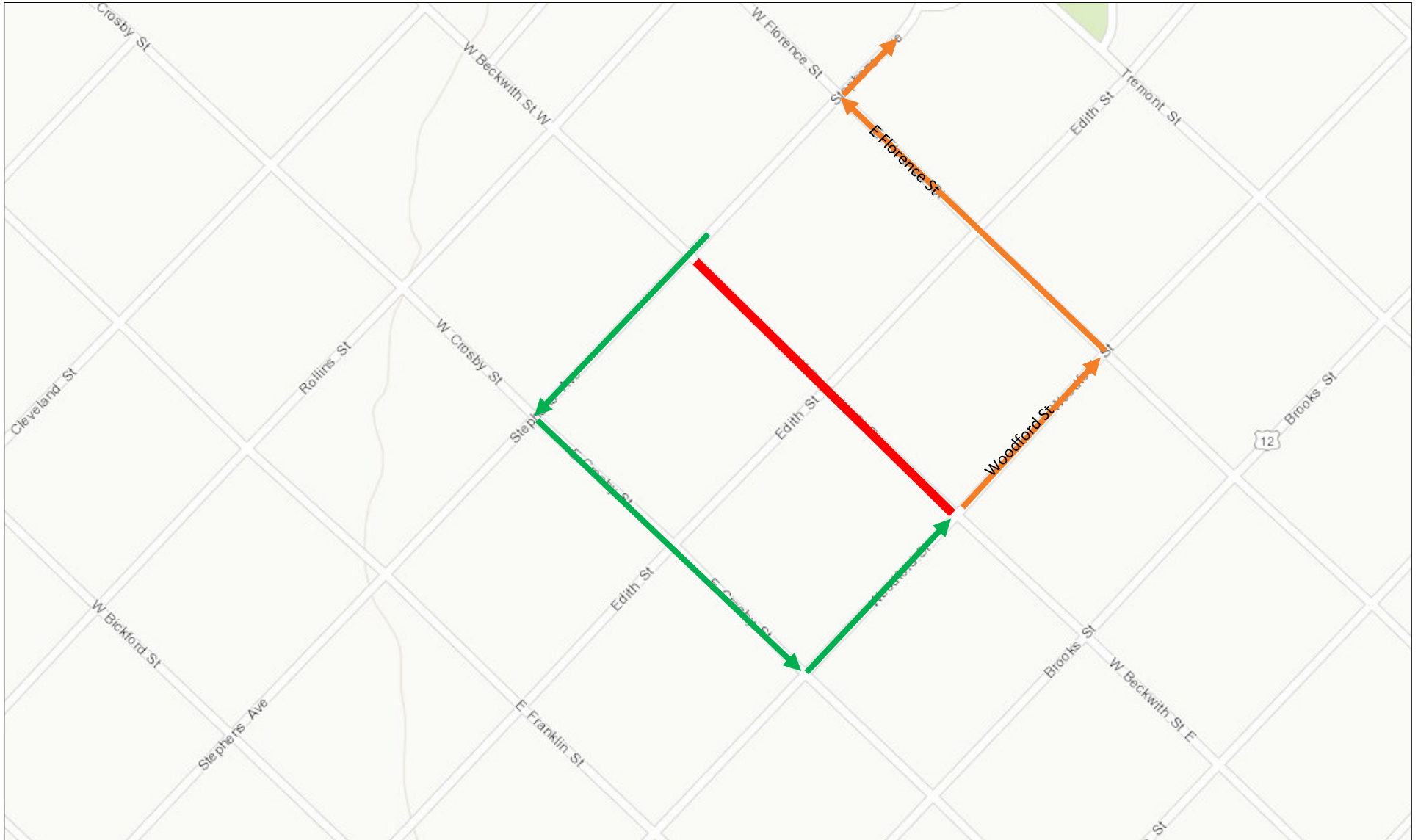
Southbound Detour Route 

*Beckwith St. will be closed to all traffic during construction, but local traffic will be allowed once excavation work is completed. Through traffic will not be allowed until paving is completed.*



# Beckwith St. Water Main Replacement Project

## Street Detour Map—Closure Woodford Ave. to Stephens Ave.



Street Closure 

Northbound Detour Route 

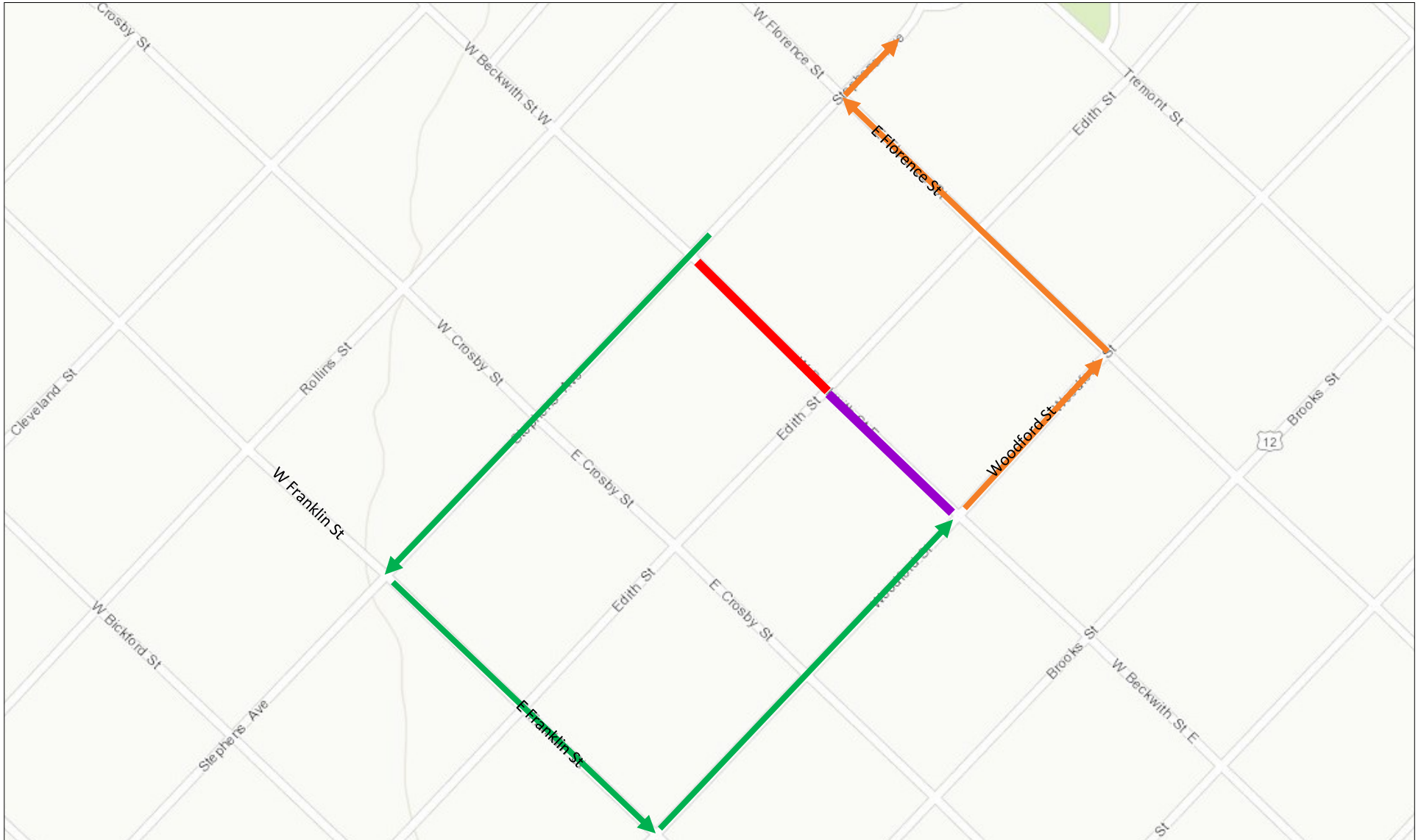
Southbound Detour Route 

*Beckwith St. will be closed to all traffic during construction, but local traffic will be allowed once excavation work is completed. Through traffic will not be allowed until paving is completed.*



# Beckwith St. Water Main Replacement Project

Street Detour Map—Closure Edith St. to Stephens Ave. and Stephens Ave. to Rollins St.



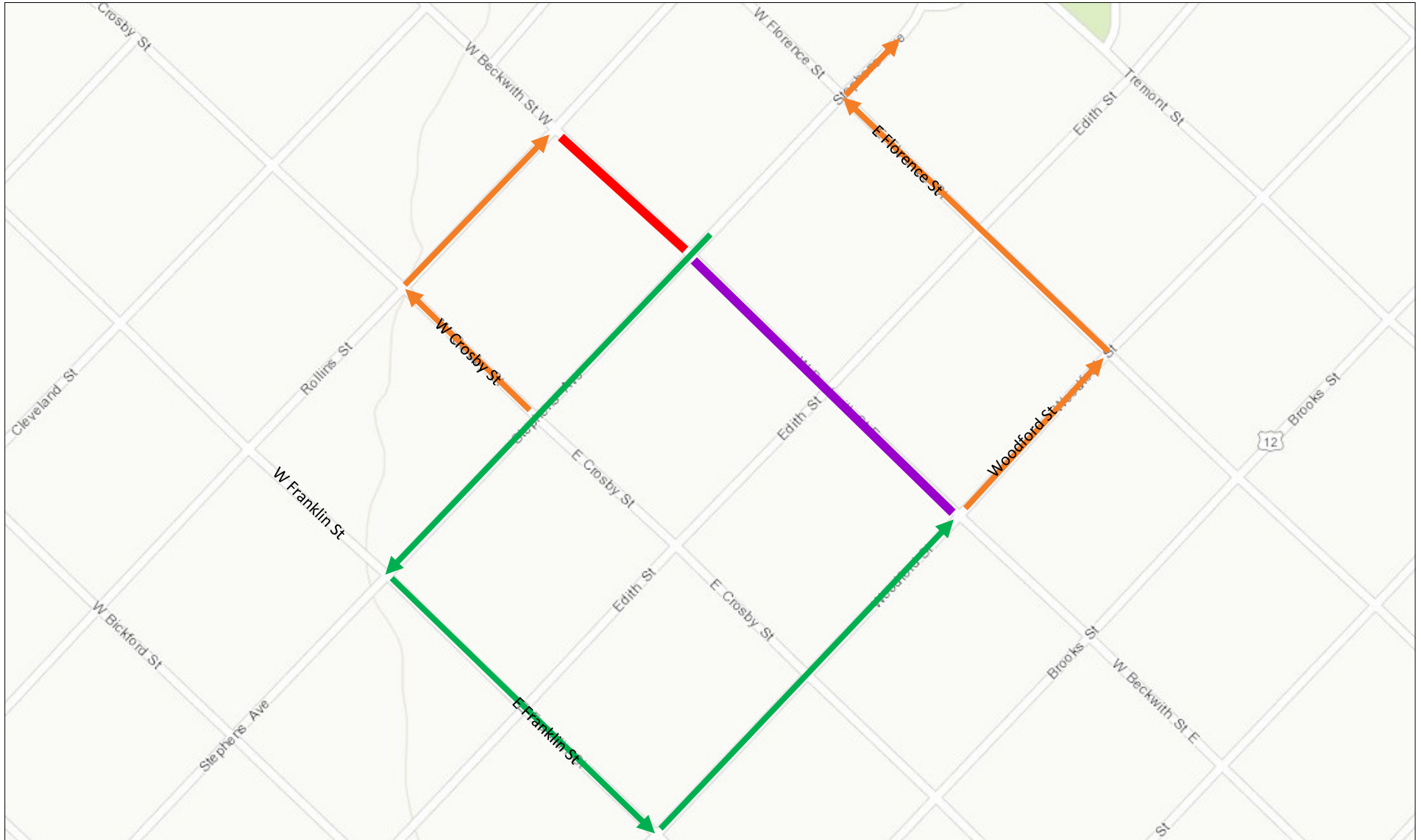
- Street Closure 
- Local Traffic Only 
- Northbound Detour Route 
- Southbound Detour Route 



*Beckwith St. will be closed to all traffic during construction, but local traffic will be allowed once excavation work is completed. Through traffic will not be allowed until paving is completed.*

# Beckwith St. Water Main Replacement Project

## Street Detour Map—Closure Stephens Ave. to Rollins St.



- Street Closure 
- Local Traffic Only 
- Northbound Detour Route 
- Southbound Detour Route 



*Beckwith St. will be closed to all traffic during construction, but local traffic will be allowed once excavation work is completed. Through traffic will not be allowed until paving is completed.*