



ANNUAL REPORT

MISSOULA PARKS AND RECREATION • 2020 HIGHLIGHTS AND IMPACT FROM OUR PARTNERS

SPECIAL THANKS TO

DONORS TO FRIENDS OF
MISSOULA PARKS (501c3):
\$111,105 for park projects.

ANONYMOUS DONOR \$1.14 MILLION
For the acquisition, management, maintenance and improvement of trails traversing the wild open space in and around the City of Missoula. A portion of the funds were used in 2020 for the Dean Stone Corridor open space acquisition.

THE SUNDERLAND FOUNDATION
PROVIDENCE ST PATRICK HOSPITAL
and many generous donors to Project Westside Park.

RUTH HAVICAN AND KAREN HOLCOMB:
for supporting Parks and Recreation for the 16th consecutive year.

WHO ARE WE?

Missoula Parks and Recreation provides places, programs and services essential to our quality of life; reflects community values; fosters a sense of place; and develops and preserves infrastructure and lands critical to supporting a healthy community.

Our Partners In Parks support this mission by providing recreation grants for low-income families, helping to build new parks and trails and enhance existing facilities, and volunteering their time to work with Parks and Recreation projects and recreation programs.

\$1,462,663

CASH AND IN-KIND DONATIONS
FOR PARK PROGRAMS & PROJECTS.



1121

VOLUNTEER HOURS FROM

450

 INDIVIDUALS

FOR SPECIAL EVENTS, PARKS, TRAILS,
URBAN FOREST & OPEN SPACE.



\$11,005

TO FAMILIES IN NEED
THROUGH SHARE THE FUN
RECREATION & AQUATICS GRANTS



142

CITY & COUNTY RESIDENTS

RECEIVED FINANCIAL ASSISTANCE
FOR SWIM LESSONS, AQUATICS
PASSES, CAMPS, SPORTS,
AND MUCH MORE.



Parks & Recreation

Visit missoulaparks.org/donate or phone 721-PARK to donate to Partners In Parks.

Learn more about Friends of Missoula Parks (501c3) at fmparks.org.

Contact Parks and Recreation Director Donna Gaukler at 721-PARK (7275) to learn more about PIP.

Volunteer with a park project or recreation program by phoning Volunteer Coordinator Tyler Decker at 552-6571 or via email.

PARTNERS IN PARKS VOLUNTEERS

REGISTER ONLINE: VOLUNTEERMISSOULA.ORG

Bancroft Pond Neighbors
Clark Fork Coalition
Climate Smart Missoula
First Interstate Bank
Loyola High School Students
McKinstry
Missoula Chamber Red Coats
Missoula Youth Homes
MOLA
Montana AmeriCorps Energy Corps
MTB Missoula
Trees for Missoula
UM Honor Students
United Way
Youth in Restoration
...and many more wonderful
groups and individuals! Thank you!

We'd like to express our sincere
appreciation to those who gave
their time informally by picking up
litter, watering plants and assisting
in conservation efforts...making
Missoula a better place to live and
play! Parks volunteer projects are
posted at VolunteerMissoula.org

ICE RINK VOLUNTEERS

Many thanks to Pineview Ice Rink
volunteers Bill Bevis, Paul Sharkey,
Dave Harmon and Craig Podner.

The all-volunteer natural ice rink
celebrates its 45th season this
winter.

TREES FOR MISSOULA

Season total: 370 volunteer hours,
78 trees planted and 250 trees
formatively pruned. For a year with
so many challenges we were able
to rely on our volunteers for a
tremendous amount of work and
investment in Missoula's Urban
Forest! www.TreesForMissoula.org.

TREES FOR MISSOULA 2020 DONORS:

Randall & Virginia Morey
Sippy Foundation
Run for the Trees Participants
Run Wild Missoula - D&S Dewey
Memorial
Jackie & Kyle Ryan
Peggy Walker

PARTNERS IN PARKS DONORS

DONATE ONLINE: MISSOULAPARKS.ORG/DONATE

PARKS ALL-STAR \$5000+

Anonymous Donor
Roy Curet
Canyon Creek Village HOA
Ruth Havican and Karen Holcomb
N. Missoula Community Dev. Corp
Pepsi of Missoula
Providence St. Patrick Hospital
Michael Sweet

PARKS CHAMPIONS \$3000-\$4999

Five Valleys Land Trust

PARKS TEAMMATE \$2999 - \$1500

Charities Aid Foundation
Jim Salisbury

PARKS FANS \$1499 - \$500

Community Medical Center
Good Food Store
Elizabeth Juda
Missoula Pediatric Dentistry
Run Wild Missoula
Western Montana Clinic
Jonathan Neff

PARKS PARTNERS \$499 AND BELOW

Ben Hughes Addition HOA
Blackfoot Communications
Lewis & Clark Neighborhood
Council
Marchie's Nursery
Mike Williams Photography
Missoula Mammoths NICA
Missoula Fresh Market
The Camino
Sally Cummins
Donna Gaukler
Eva Karau
Kyle Ryan
Alina McCue
Sophia Newcomer
Corinne Williams
Many thanks to the many generous
organizations who partner with us
annually to bring you community
events like Kidsfest, Fall Family
Fest, Run For the Trees, Frost Fever
and many more!

PROJECT WESTSIDE PARK

WWW.PROJECTWESTIDEPARK.ORG
PLAY CAPTAINS - \$10,000 AND UP

Blackfoot Communications
Providence St. Patrick Hospital
Stockman Bank
Sunderland Foundation

PARK BUILDER - \$1,000 TO \$9,999

Advanced Technology Group
The Appleseed Foundation
Beach Transportation
CHS Mountain West
The Farmeisters
First Interstate Bank
Gayle Gellerstedt
Ruth Pruitt Phillips Foundation
The Shatto Family
Brian and Karen Sippy

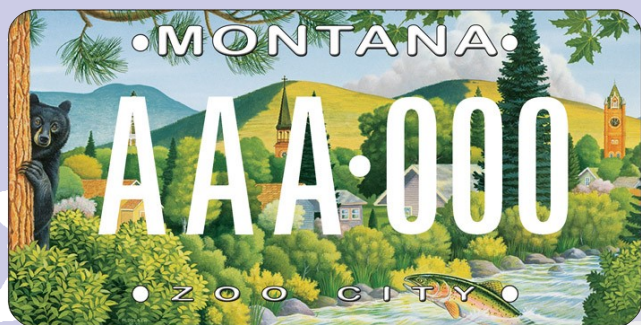
PARK & PLAY SUPPORTER - \$500 - \$999

Wendy Coffman
The Hickey 6
Steve and Kristy Luedecke
Juanita Vero

FRIENDS OF WESTSIDE PARK - < \$500

Abby Wiggin, Adam and Heidi
West, Amy Shattuck, Andi Hoelzel
and Ian Smith, Andrew Larson,
AnnieWatson, Brett Hollis, Bryan
Von Lossberg and Genevieve
Marsh, Cathy Miller, Christi Smith,
Deborah Frandsen, Donna
Gaukler, Erin McGlinchy, Florence
Chessin, Grace Decker, Jack
Rowan, Jacqueline Brown, James
and Suzan Brown, Jen Molloy,
Jesse Dodson, John Moffatt,
Jordan Krause, Julia Hall, Kate
and Matt Jennings, Laura Hyland,
Leslie Hunter, Marc Cutler, Marin
Addis, Mark and Mary Thane,
Mary Hanson, Michael Painter - In
Memory of Robert Burger, Nathan
McLeod, Noah and Kali Becher,
Rafael Chacon - In Memory of
Mora Payne, Rebecca Goodrich,
Rhonda Callison, Sarah McNeerney,
Stephen and Sue Decker, Sue and
John Honsky.

[Naming rights are available!](http://Namingrightsareavailable!) Learn more at
projectwestsitepark.org.



STEP UP TO THE PLATE

Since 2013, Partners In Parks license plates
have generated **\$72,020** for Recreation and
Aquatics grants for families in need.

2020 PARKS PLATES RAISED \$9,820!

Get your very own Parks and Recreation license
plate today at the County Treasurer's office.