

# ANNUAL REPORT

MISSOULA PARKS AND RECREATION • FY '19 HIGHLIGHTS AND IMPACT FROM OUR PARTNERS

## SPECIAL THANKS TO

DONORS TO FRIENDS OF MISSOULA PARKS (501c3): \$41,000 for park projects.

HOREJSI CHARITABLE FOUNDATION: \$15,000 donation to Trees For Missoula through Friends of Missoula Parks.

BIG SKY BIKES: \$15,000 in-kind donation.

RUN WILD MISSOULA: \$10,700 donation for trail improvements.

TREES FOR MISSOULA: \$7,600 donation of goods and services.

RUTH HAVICAN AND KAREN HOLCOMB: for supporting Parks and Recreation for the 15th consecutive year.

## WHO ARE WE?

Missoula Parks and Recreation provides places, programs and services essential to our quality of life; reflects community values; fosters a sense of place; and develops and preserves infrastructure and lands critical to supporting a healthy community.

Our Partners In Parks support this mission by providing recreation grants for low-income families, helping to build new parks and trails and enhance existing facilities, and volunteering their time to work with Parks and Recreation projects and recreation programs.

# \$115,654

CASH AND IN-KIND DONATIONS  
FOR PARK PROGRAMS & PROJECTS.



# 9,730

VOLUNTEER HOURS FROM

# 1,508

INDIVIDUALS  
FOR SPECIAL EVENTS, AND IN  
PARKS, TRAILS AND OPEN SPACE.



# \$33,667

TO FAMILIES IN NEED  
THROUGH SHARE THE FUN  
RECREATION & AQUATICS GRANTS



# 245

FAMILIES

RECEIVED FINANCIAL ASSISTANCE  
FOR SWIM LESSONS, AQUATICS  
PASSES, CAMPS, SPORTS,  
AND MUCH MORE.



## PARTNERS IN PARKS VOLUNTEERS

REGISTER ONLINE: [VOLUNTEERMISSOULA.ORG](http://VOLUNTEERMISSOULA.ORG)

Big Sky High School Students  
Bitterroot Disc Golf Club  
Boy Scouts of America  
Chief Charlo Students  
Christian Softball League  
Church at the Gates  
Dolores Shapiro  
Eagle Scouts  
Fall Family Fest Volunteers  
Franklin to Fort Neighborhood  
Garden City Flyers  
Girl Scouts of Missoula  
Jeanette Rankin Peace Center  
Jr. Playmakers Coaches  
Karen Sippy  
Kids Fest Volunteers  
Lower Rattlesnake Neighborhood  
Loyola High school Students  
McKinstry  
Missoula Rose Society  
Montana Trail Crew  
Moon-Randolph Homestead Volunteers  
Morning Move Volunteers  
MTB Missoula  
Nancy Polowski  
National Public Lands Day Volunteers

Poverello Center  
RSVP Program  
Run for the Trees Volunteers  
Russell Active Afterschool Program  
Sentinel High school Students  
Spectrum Aquatics  
Steven Ricket  
Teen Workreation  
Trail Runner Community Service  
Trees for Missoula  
UM Mansfield Center  
UM Students  
University Neighborhood  
Wipfli CPAs and Consultants  
Zootown Derailleurs Coaches and Volunteers

...and many more wonderful groups and individuals! Thank you!

Special thanks to those who gave their time informally by picking up litter, watering plants and assisting in conservation efforts. Thanks for making Missoula a better place to live and play!

Parks volunteer projects are posted at [VolunteerMissoula.org](http://VolunteerMissoula.org)

## PARTNERS IN PARKS DONORS

DONATE ONLINE: [MISSOULAPARKS.ORG/DONATE](http://MISSOULAPARKS.ORG/DONATE)

### PARKS ALL-STAR \$5000+

Big Sky Bikes  
Friends of Missoula Parks  
Tanner Olsen Foundation  
Run Wild Missoula

### PARKS CHAMPIONS \$3000-\$4999

Five Valleys Audubon Society  
Missoula Broadcasting Co - U104.5  
N. Msla Community Development Corp

### PARKS TEAMMATES \$2999 - \$1500

Coca Cola - High Country  
Custom Screen Printing  
Grant Creek Trails Association  
Holiday Inn Missoula Downtown  
Missoula Pediatric Dentistry  
Montana Alpha Cycling  
Skyhawks  
Western Montana Clinic

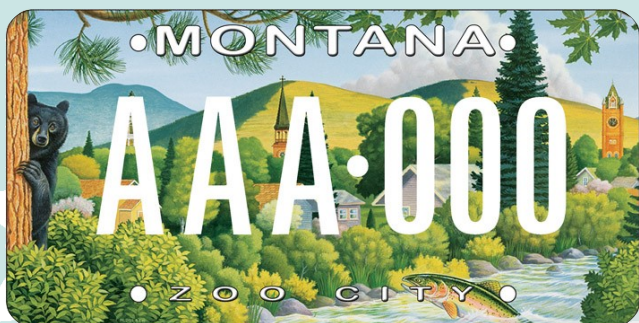
### PARKS FANS \$1499 - \$500

Ace Fancy Plants  
Sue and Jim Brown  
Children's Dentistry of the Rockies  
Clearwater Credit Union  
Community Medical Center  
Good Food Store  
Innova  
JAK Enterprises  
Kiwanis Club of Missoula  
Little Grizzly Football  
Mike Williams Photography  
Milky Whey  
Missoula Bone and Joint  
UM MonTECH  
Northwestern Energy  
Republic Services  
TrailWest Bank

Twite Family Partnership  
United Way of Missoula  
Christopher Wicher

### PARKS PARTNERS \$499 AND BELOW

A Carousel for Missoula  
Bank of Montana  
Berge Farms, Inc.  
Big Sky ATA Black Belt Academy  
Boot Barn  
Randy Cox  
DeMarois Buick GMC Truck  
Doubletree by Hilton Missoula  
Fire & Ice Graphics  
Garden City Flyers  
Ink Realty Group  
Karl Tyler Chevrolet  
Kettle House Brewing Co.  
Kornutopia  
Andrea Leeds  
Lost Trail  
Caroline Lurgio  
Marchies Nursery  
John and Wendy Melvin  
Montana Fish, Wildlife & Parks  
Montana Natural History Center  
Pruyn Veterinary Hospital  
Jan and Rod Rogers  
Silverwood Theme Park  
Southside Lions Club  
UM PT Students Assoc.  
Village Senior Residence  
Wells & McKittrick, P.C.  
Jon and Linda Yearous  
Zoo City Apparel  
  
Many thanks to the many generous organizations who partnered with us in FY19 to bring you community events like Kidsfest, Fall Family Fest, Run For the Trees, Frost Fever and many more!



### STEP UP TO THE PLATE

Since 2013, Partners In Parks license plates have generated **\$62,200** for Recreation and Aquatics grants for families in need.

**FY 19 PARKS PLATES RAISED \$11,900!**

Get your very own Parks and Recreation license plate today at the County Treasurer's office.