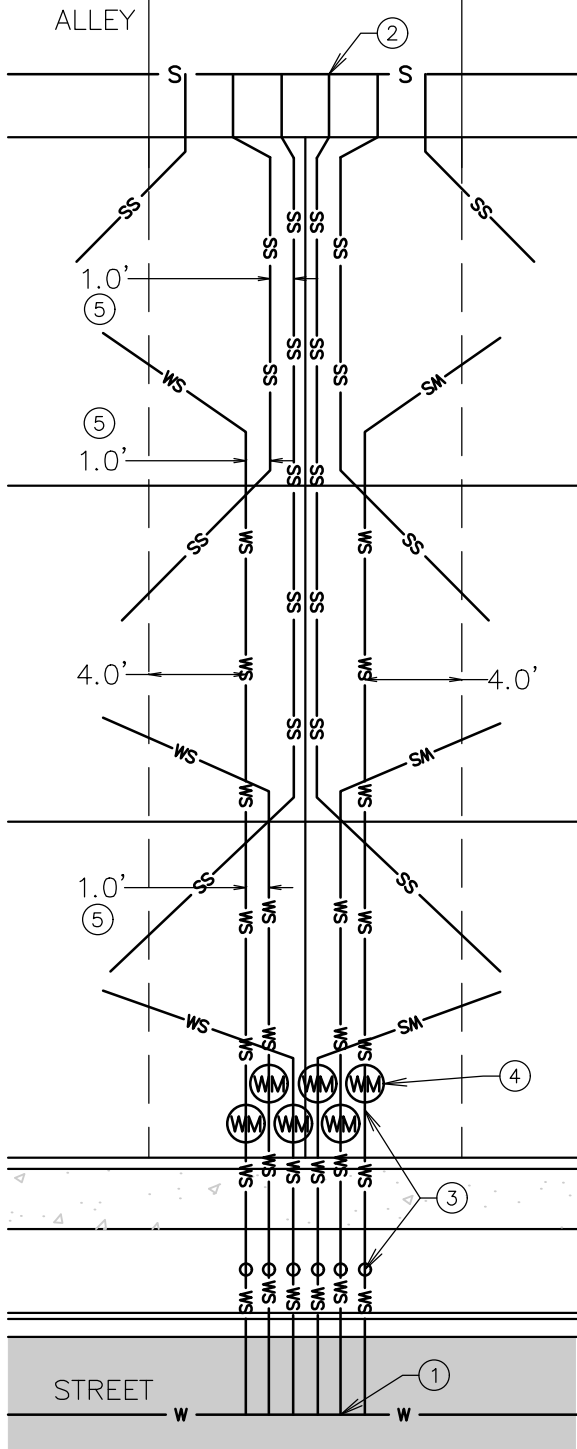


LEGEND

—— W ——	WATER MAIN
—— S ——	SEWER MAIN
—— SS ——	SEWER SERVICE
—— WS ——	WATER SERVICE
—————	PROPERTY LINE
- - - - -	EASEMENT BOUNDARY
⊙	WATER METER CURB BOX

TOTAL WIDTH = 13'
FOR CURRENT EXAMPLE



KEYED NOTES

- ① WATER SERVICE TAP SPACING IS DEPENDENT UPON MAIN MATERIAL. SEE 4.3.7.D.3 IN MISSOULA PUBLIC WORKS STANDARDS AND SPECIFICATIONS MANUAL
- ② SEWER SERVICE TAP SPACING IS 2' AT THE MAIN. SEE 5.2.13 IN MISSOULA PUBLIC WORKS STANDARDS AND SPECIFICATIONS MANUAL
- ③ SEE STD 404A FOR MORE INFORMATION ON CURB STOPS, METER PITS AND RESIDENTIAL WATER SERVICE LINES
- ④ THERE SHALL BE A MINIMUM 6" SPACING IN ALL DIRECTIONS BETWEEN METER PITS
- ⑤ THERE SHALL BE A MINIMUM 1' SPACING BETWEEN ALL WATER AND/OR SEWER SERVICE LINES

GENERAL NOTES

1. CONSTRUCTION MATERIALS AND PROCEDURES SHALL COMPLY WITH MONTANA PUBLIC WORKS STANDARD SPECIFICATIONS (MPWSS), 7TH EDITION, APRIL 2021, AS MODIFIED BY THE MISSOULA CITY PUBLIC WORKS STANDARDS AND SPECIFICATIONS MANUAL, APPENDIX 2-A (STANDARD MODIFICATIONS TO MPWSS), CURRENT EDITION.
2. FOR A SINGLE SERVICE THE MINIMUM EASEMENT WIDTH IS 10'. IF CASING SLEEVE IS PROVIDED THE EASEMENT MAY BE REDUCED TO 5'.
3. ALL SERVICES CROSSING A PROPERTY SHALL BE A MINIMUM 4' FROM EDGE OF EASEMENT OR PROPERTY LINE. SERVICES SHALL BE ALLOWED CLOSER TO THE EASEMENT IF SLEEVE IS PROVIDED OR THE LINE IS INSTALLED AND MAINTAINED USING TRENCHLESS METHODS.
4. A CONSTRUCTION EASEMENT MAY BE REQUIRED IF THE LINE AND SLEEVE IS INSTALLED USING TRADITIONAL METHODS. THE SERVICE LINE MAY NOT BE PLACED IN THE CONSTRUCTION EASEMENT.
5. ALL SERVICES SHALL BE PERPENDICULAR TO THE MAIN IN THE RIGHT OF WAY.
6. SEWER SERVICE CLEANOUTS AS REQUIRED PER THE UNIFORM PLUMBING CODE.
7. WHERE THERE ARE MORE THAN 2 WATER SERVICES IN THE SAME TRENCH A TAG INSIDE THE METER PIT LABELING THE ADDRESS IS REQUIRED.



PRIVATE SERVICE LINE EASEMENTS

Approved By
Utilities Engineer
Logan McInnis
Logan McInnis, PE

Adopted: 01/01/2023
Revised:

STD - 417