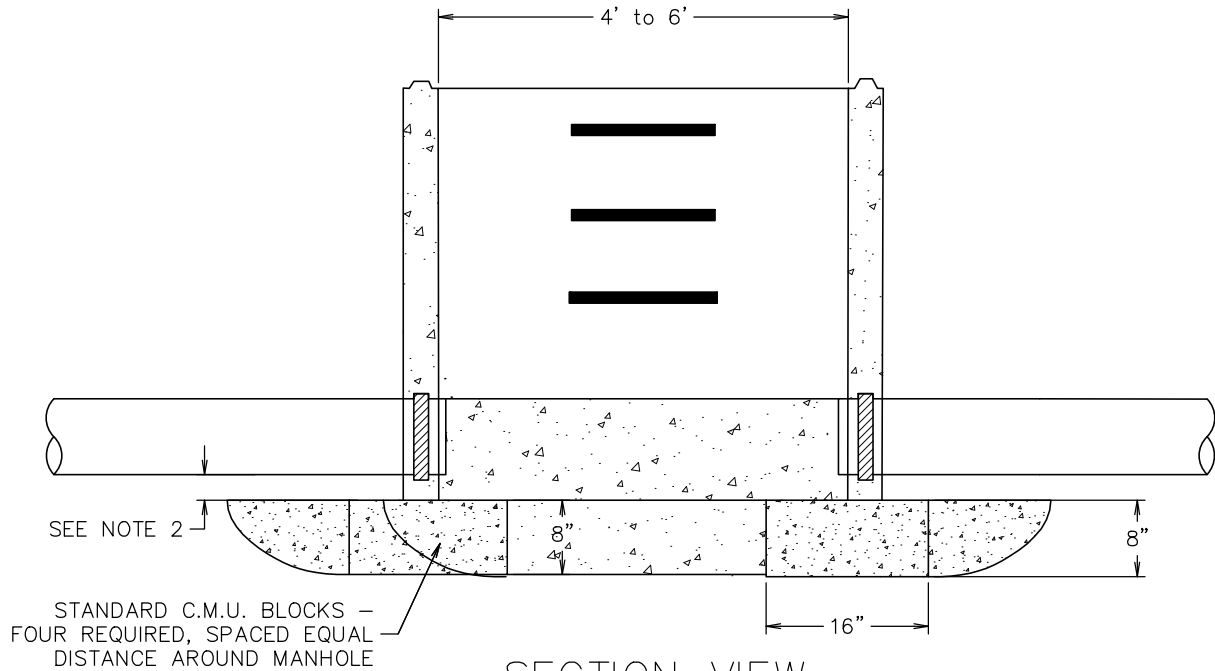


PLAN VIEW



SECTION VIEW

GENERAL NOTES:

1. CONSTRUCTION MATERIALS AND PROCEDURES SHALL COMPLY WITH MONTANA PUBLIC WORKS STANDARD SPECIFICATIONS (MPWSS), 7TH EDITION, APRIL 2021, AS MODIFIED BY THE MISSOULA CITY PUBLIC WORKS STANDARDS AND SPECIFICATIONS MANUAL, APPENDIX 2-A (STANDARD MODIFICATIONS TO MPWSS), CURRENT EDITION.
2. BASE AND FILL CONCRETE MAY BE POURED MONOLITHICALLY.
3. ONE-HALF (1/2") INCH SPACING MAY BE OMITTED WHEN BASE AND FILL CONCRETE ARE POURED MONOLITHICALLY.



Engineering Division

Sanitary Sewer Manhole - Dog House Base (Sheet 2 of 3)

Ross Mollenhauer

Approved By City
Engineer for Utilities
Ross Mollenhauer, PE

Adopted: 09/28/2020
Revised: 01/01/2023

STD - 512-2