

# 被遗忘的墓地

# A Forgotten Cemetery

1880s Rattlesnake cemetery

Missoula's first cemetery lies beneath this neighborhood. The final resting place for early Missoula settlers, it fell into disrepair in the 1880s. At this time, Missoula's Chinese community began using it as burial grounds. By 1914, few Chinese people remained in Missoula, and a new neighborhood hid the cemetery. Today, bones still emerge during landscaping and redevelopment.

## Missoula's Historic Chinese Community

## 米苏拉历史悠久的华人社区

Missoula's early Chinese community was a lively and flourishing part of the city. The first Chinese residents arrived in 1865 from nearby mines. Finding a town of opportunity, Front Street became the center of Chinatown with laundries and restaurants. While national efforts to reduce Chinese immigrants were successful, Missoula's community grew. This changed in 1892 when four Chinese workers were killed in a labor dispute. No known descendants of families remain in Missoula.

| 尾所碑埠 MISSOULA (Missoula County) |  |
|---------------------------------|--|
| 國民黨會所                           | Chung Hwa National Club.....                           |
| 福記雜貨                            | Fook Kee & Co., General Merchandise.....P. O. Box 95   |
| 榮盛蘇杭                            | Leong Sing & Co., Fancy Dry Goods.....512 Woody St.    |
| 廣隆棧雜貨                           | Quan Lung Jan & Co., General Merchandise.....          |
|                                 | .....P. O. Box 372, 277 W. Front St.                   |
| 廣義雜貨                            | Quong Gee & Co., General Merchandise.....P. O. Box 217 |
| 廣德棧雜貨                           | Quong Tuck Jan & Co., General Merchandise.....         |
|                                 | .....P. O. Box 125, 229 Front St.                      |
| 廣和棧雜貨                           | Quong Wah John & Co., General Mdse.....229 W. Main St. |
| 上海餐館                            | Shanghai Restaurant.....217 W. Front St.               |
| 和興昌雜貨                           | Wah Hing Chong & Co., General Mdse.....P. O. Box 195   |
| 源隆棧雜貨                           | Yuen Lung Jan, General Merchandise.....                |
| 悅隆雜貨                            | YUET LUNG FONG KEE & CO., General Merchandise.....     |
|                                 | .....P. O. Box 423                                     |

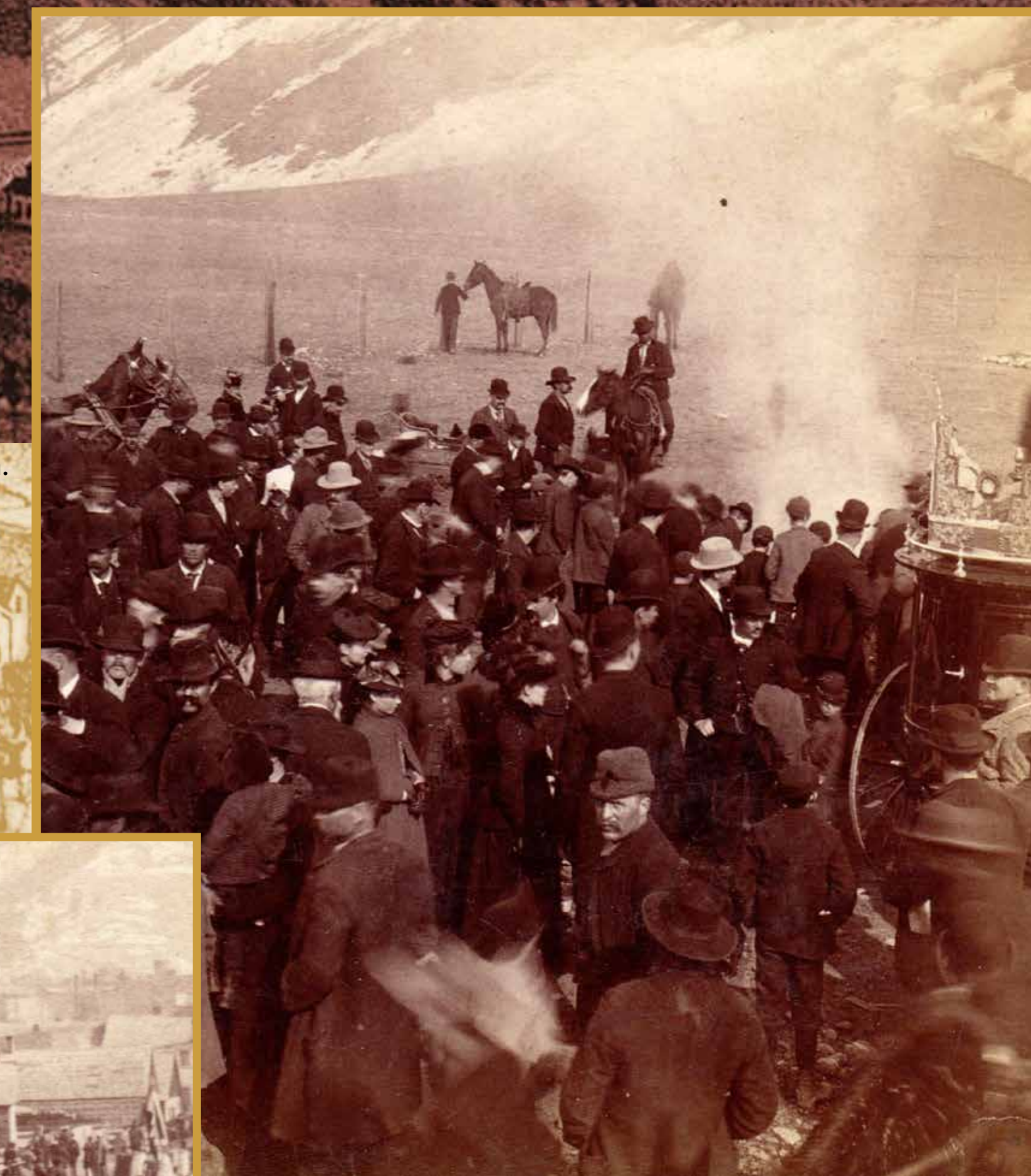
Some of Missoula's Chinese businesses are listed in this directory.

Photo: Huang, J., 黃金. (1913). *International Chinese Business Directory of the World*. San Francisco: International Chinese Business Directory Co.



The Chinese community was known for its large funeral processions which would draw the attention of the entire town.

Photo courtesy of private collection.



Above is the only known surviving photograph of Chinese burial in Montana. Researchers estimate that as many as fifty unmarked graves remain at the site.

Photo courtesy of private collection.

### Impressive Ceremonies Held Yesterday Over a Celestial's Grave.

The Chinese funeral held Sunday was a gorgeous affair, participated in by about 500 Chinese and witnessed by nearly the entire population of Missoula. The Mascot band was engaged for the purpose which with the assistance of the unearthly tom-toms of the Celestial musicians succeeded in making all the noise desired. Mourners were numerous, many of whom, adorned with Fourth of July draperies, managed admirably in frightening every horse in the street.

Funeral processions could be large and observed by the whole community.

Missoula Weekly Gazette, March 25, 1891.