

Southgate Triangle Neighborhood Council General

Meeting Minutes

Date: October 11, 2017

Time: 7:00 pm

Location: Southgate Mall

2901 Brooks St.

Missoula, MT 59801

Leadership Team Members in attendance: Bob Martin, Wes Appelt, Mark Foss, Skip Hegman

Others: Jane Kelly, Neighborhood Coordinator; Kayla Pomeroy, Outreach Assistant; Cindy Christensen, Russell School Principal; Kimberly Baker, co-board member Friends of Missoula Parks; Jon Wilkins, City Council Representative, and about 22 residents of the Southgate Triangle Neighborhood

-
1. Bob Martin welcomed guests.
 2. History of Neighborhood Councils- presented by Jane Kelly, Neighborhood Coordinator. There were no questions.
 3. Cindy Christensen conducted an overview of the updates to Russell School. The expansion will combine the school into one building rather than several annexes, add office spaces to provide better visibility and safety, and provide a separate dining facility from the gym. The projected timeline is to be finished August 2018.
 4. Kimberly Baker overviewed the Bike Park at Bellevue and the role of Friends of Missoula Parks in the fundraising efforts. The Bike Park is projected to start construction in Spring 2018.
 5. Bob Martin gave an update on the Bellevue Park Sprinkler System. The well pump will be upgraded, irrigation will go to the trees and the sprinkler system will water the flat areas of the park. It will be implemented in phases in order to cover the whole 7 acres of the park.
 6. Neighborhood Priorities were set – [see back page for the results of the votes by neighbors for priorities]
 7. A motion was made by Bob Martin and seconded by Wes Appelt to elect Mark Foss, Kelly Lloyd, Larry Cron, and Hans Christiansen to the Southgate Triangle leadership team for a two-year term. The motion passed unanimously.
 8. New Business –none

9. Announcements - Larry Cron stated that there will be a Community Involvement Meeting for the Montana Rail Link Park on November 16th at 6pm at the Sovereign Hope Church to approve the final designs for the park. Jane Kelly gave a reminder that grants are due on October 24th.

10. Q & A with City Council. Jon Wilkins took question from residents regarding Bellevue Park grass development, clearing of the sidewalks of gravel following the street cleaning in the winter, and the tree plan.

11. Public comment on non-agenda items - none

12. Skip Hegman will report to City Council

13. Meeting adjourned at 8:30pm.

Jane Kelly, Neighborhood Coordinator

Karen Gasvoda, Neighborhood Assistant

Cindy Christensen, Russell School Principal

Julie Robitaille, MCPS Executive Regional Director

Kimberly Baker, co-board member Friends of Missoula Parks

John Dibari, Ward 4 Council Member

Jon Wilkins, Ward 4 Council Member

Julie Armstrong, Ward 5 Council Member

Annelise Hedahl, Ward 5 Council Member

Southgate Triangle Leadership Team

jkelly@ci.missoula.mt.us 552-6081

kgasvoda@ci.missoula.mt.us 552-6084

[ccchristensen@mcps.k12.mt.us](mailto:cchristensen@mcps.k12.mt.us) 728-2400 ext. 4800

jrobitaille@mcps.k12.mt.us 728-4100 ext. 1074

kimberlyhartbaker70@gmail.com

jdibari@ci.missoula.mt.us 274-7337

jwilkins@ci.missoula.mt.us 543-7952

jarmstrong@ci.missoula.mt.us 426-1530

ahedahl@ci.missoula.mt.us 546-6679

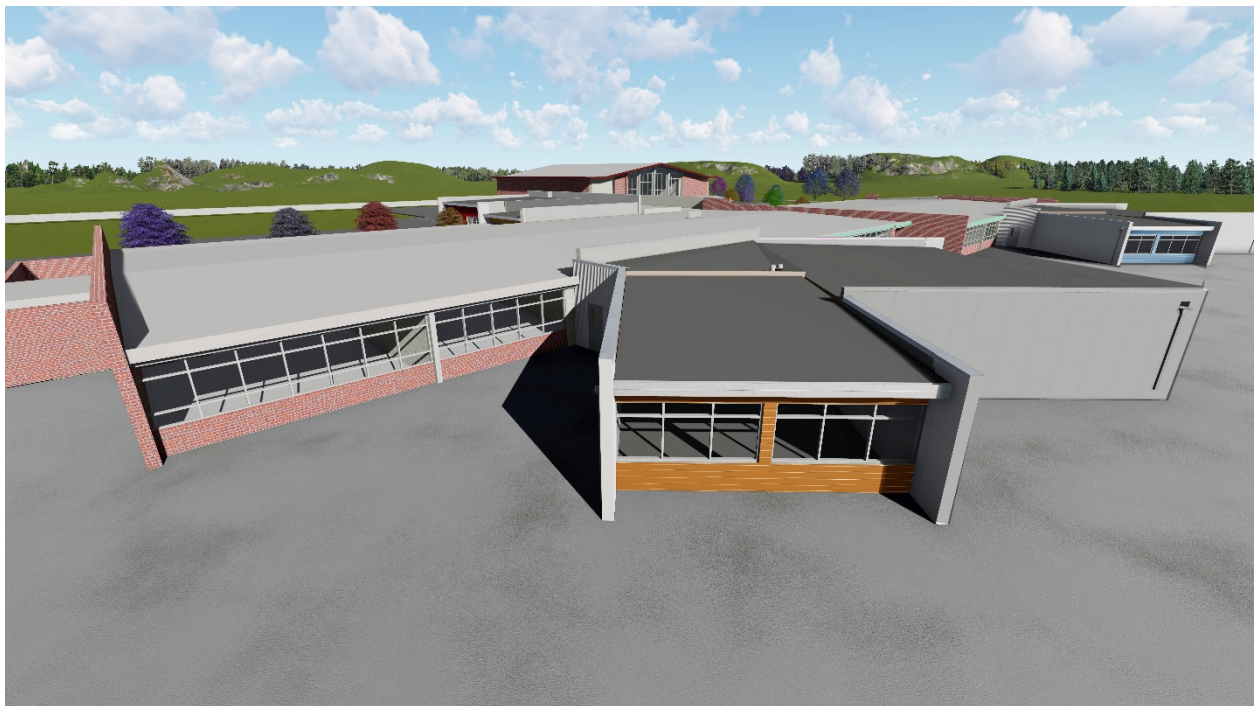
southgatetraingle@missoula-neighborhoods.org

Southgate Triangle Priorities

- Mutt Mitt Stations needed at 39th Street and the North end of Paxson near 36th Street
 - Development of Bellevue Park
 - Snow removal in Bellecrest area
 - Repave 34th Street
 - Crosswalk needed at Ernest and Russell (tie)
 - Spray weeds in Bellevue Park (tie)
-
- Repave 36th and Bellecrest (tie)
 - Sidewalk gaps need to be filled in (tie)
-
- Construction in Neighborhood Council causes noise pollution (tie)
 - Trees overhanging streets need to be trimmed (tie)

October 12, 2017







Parks & Recreation

February 5, 2014

Bellevue Park

Park Master Plan Narrative

Overview

The Master Plan for Bellevue Park is a result of a public process with the Southgate Triangle Neighborhood, which spanned the course of two years, dating back to October 2012. Input gathered from the public meetings helped guide the design process. The Master Plan was approved by the Neighborhood at the Southgate Triangle General Meeting on October 8th, 2014.

Site Context

Bellevue Park is a 7.8 acre, irregularly shaped, undeveloped park in the Southgate Triangle Neighborhood. Originally designated as a county park, the city acquired it through annexation. The primary features of the park are the Missoula Irrigation District (MID) ditch that runs through the western portion of the site, and the now abandoned Pattee Creek Drainage Ditch. In the late 1990s and early 2000s, the city improved the storm drainage flows in the area and rerouted Pattee Creek away from the area. At the same time, they also installed the large subsurface infiltration structure in the southwestern most portion of the park. There is small network of user defined paths that work their way through the park, as well as a small BMX bike area in the stand of existing cottonwoods. Within the past two years, the park's maintenance responsibilities have transferred from the Conservation Lands Manager to the Parks Maintenance Manager. As a result, the park has received more frequent mowing (once every 4-6 weeks), which is more desirable to the neighbors, than the once a year mowing it was getting previously. There is an existing 35gpm well located in the southwest corner, which irrigates the medians on 39th street between Paxson Street and South Russell Street.

Master Park Plan

The Master Plan for Bellevue Park was driven by the neighborhood's strong recommendation of a low level of development, or a Level of Service (LOS) of 3 to 4, based on Park Standards. It was also important that the park be economically feasible to build and maintain. The desire of the neighborhood is to establish a low growing, non-irrigated, drought-tolerant grass mix that would out compete the invasive weeds that have crept into the park.

The abandoned Pattee Creek Drainage Ditch will be filled in with adequate soil to eliminate potential hazards, as well as making the park easier and safer to maintain. A 1.5" irrigation mainline, serving drip to the proposed trees, should be installed in the ditch prior to filling. The fill should be graded to still allow surface drainage along the previous ditch alignment. There are also a number of invasive Golden Willows along the ditch alignment that will need to be removed and treated.

A meandering five (5) foot wide, soft surface path will run the length of the park, from the northeast to the southwest, with loop options on both ends. There will be multiple bench locations along the path, in both shade and sun locations. As part of a separate project, Public Works installed curb, gutter, and

Parks and Recreation...The Benefits Are Endless!™

AN EQUAL EMPLOYMENT OPPORTUNITY AFFIRMATIVE ACTION EMPLOYER M / F / V / H – WWW.MISSOULAPARKS.ORG

detached sidewalks on the 34th St., 35th St., 36th St., and Paxson St. frontages with direction and input from the draft master plan. Parks staff will begin phasing in boulevard street trees along all the above park frontages and within the park. Small drought tolerant shrub beds are placed along the frontage of 36th Street. These small beds would be adopted by interested neighbors for the planting and maintenance. Additional beds could be developed, based on interest in the community. The existing well on site may be used to drip irrigate the tree plantings and shrub beds, but the capacity of the well would not be sufficient to irrigate the entire site as turf.

The addition of a small footbridge, across the MID ditch will improve access from the Paxson Street frontage. There is a potential to use a 20' bridge, which is currently in storage, previously used to cross Rattlesnake Creek. This access from Paxson Street is also the location for a Future Shelter, Community Garden, and Port-o-let Enclosure. The feasibility of the garden in this location will be researched by Garden City Harvest, who would also be responsible for management, maintenance and water needs of the garden.

The existing BMX pump track area will be enhanced, with the kids still being able to alter and “dig in the dirt.” The stand of Cottonwood Trees will be inspected again for health. Many of these trees have had dirt backfilled around the bases, and will need to be watched for health and safety. New trees will be phased into this area to maintain a shade cover.

Park Signage will be placed at both 34th Street and the corner of 39th Street and Paxson, identifying it as Bellevue Park. Park Rules signage, Mutt Mitt Stations, and Trash Receptacles will be placed at the entrances to the park. A number of picnic tables will be supplied on site, and be allowed to move around per user needs.

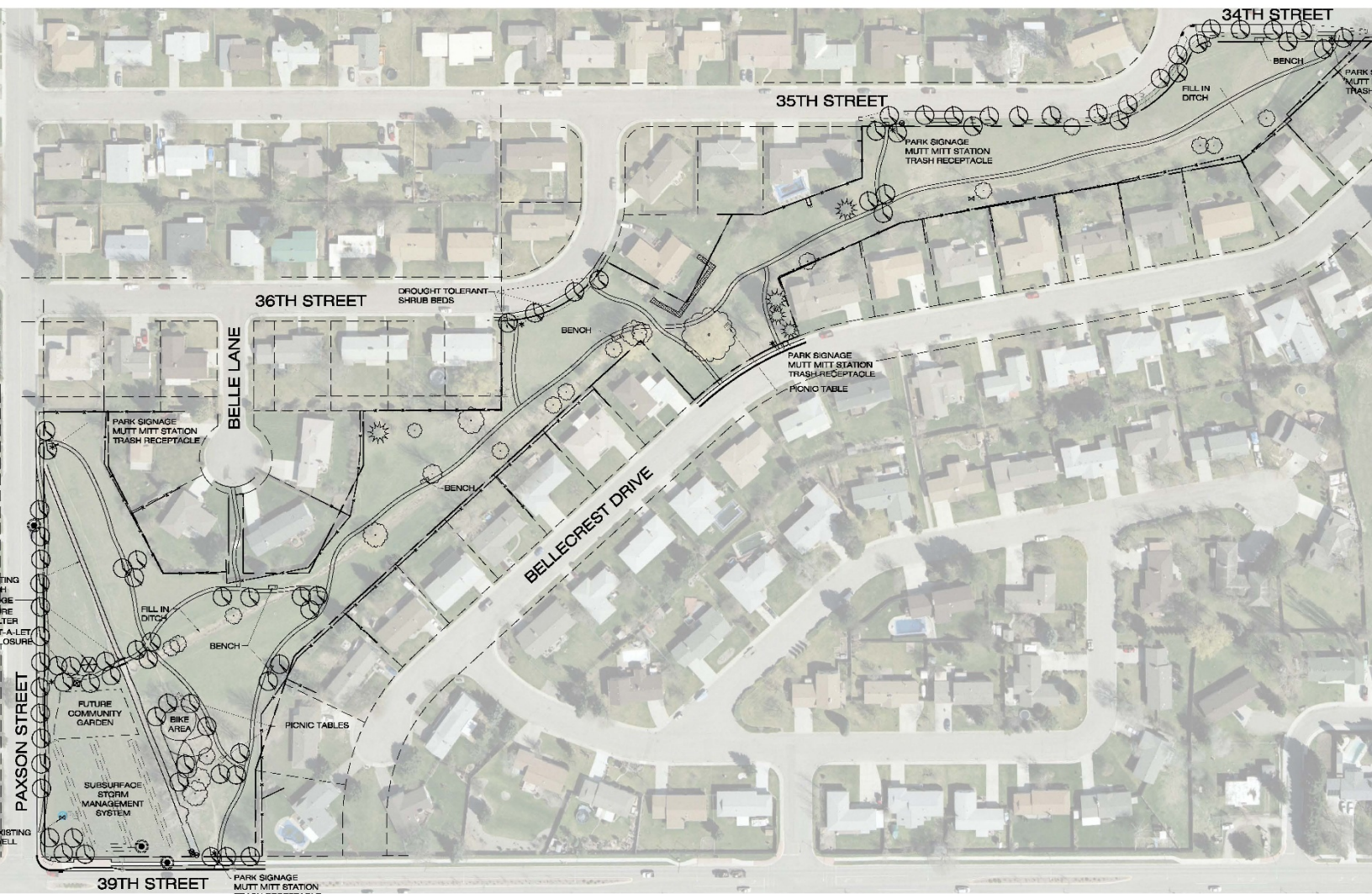
The approximate extents of the Subsurface Storm Management/Infiltration System is shown on the plans. Development is limited on top of this structure.

There are a couple instances of encroachment into the park by adjacent property owners that will need to be addressed.

Funding is not currently available for plan implementation. Possible options may include park impact fees (there is minimal new development in the area), Land and Water Conservation Fund and Recreation Trails Program grants, and City general and park district funds.

Neil Miner

Parks & Trails Design / Development Manager
600 Cregg Lane. Missoula, MT 59801
Phone: (406) 552-6264 | Fax: (406) 327-2162
nminer@ci.missoula.mt.us



BELLEVUE PARK PREFERRED MASTER PLAN