

## Heart of Missoula Neighborhood Council Leadership Team Meeting Minutes

Date: April 24, 2018

Time: 7:00 PM

Location: Hal Fraser Room  
140 W. Pine St.  
Missoula, MT 59802

Present: Pamela Frasier, Laurel Farrell, Maurisa Phillips, Leah Morrow, David Strohmaier, Bryan von Lossberg, Dan Evans, Ethan Smith, Jane Kelly

Everyone was welcomed and introductions were made

The March 15, 2018 meeting minutes were approved as posted

Dave Spildie and Bryan von Lossberg talked about Safety Issues with Highway 200 underpass east of Ben Hughes subdivision

Ethan Smith spoke about Neighborhood Watch / safety

Don Evans spoke about the Union Gospel Mission of Missoula

Judson Miller spoke about the MCPS operations levies

The questionnaire for Heart of Missoula webpage was discussed.

The date for the general meeting was discussed, and a new date will be set.

Maurisa gave the Community Forum Report.

Jane Kelly gave the Office of Neighborhoods Report.

Review bylaws - tabled

Public comment on non-agenda items – none

Anna Maura would like to join the leadership team.

Jane Kelly, Neighborhood Coordinator  
Karen Gasvoda, Program Assistant  
Ethan Smith, Missoula Police Department  
Dave Strohmaier, Missoula Co. Commissioner  
Bryan von Lossberg  
Dave Spildie  
Don Evans  
Heart of Missoula Leadership Team

[jkelly@ci.missoula.mt.us](mailto:jkelly@ci.missoula.mt.us) 552-6081  
[kgasvoda@ci.missoula.mt.us](mailto:kgasvoda@ci.missoula.mt.us) 552-6084  
[esmith@ci.missoula.mt.us](mailto:esmith@ci.missoula.mt.us) 552-6335  
[dstrohmaier@missoulacounty.us](mailto:dstrohmaier@missoulacounty.us) 529-5580  
[bvonlossberg@ci.missoula.mt.us](mailto:bvonlossberg@ci.missoula.mt.us) 285-1857  
[drspildie@yahoo.com](mailto:drspildie@yahoo.com)  
[execdirector@ugmofmissoula.org](mailto:execdirector@ugmofmissoula.org) 549-4673  
[heartofmissoula@missoula-neighborhoods.org](mailto:heartofmissoula@missoula-neighborhoods.org)

## **Heart of Missoula Priorities**

1. Transient activity
2. Parking
3. Neighborhood Watch
4. Historic preservation
5. Keeping alleys clean
6. Design standards
7. Impact of development
8. Urban forest

9/6/2017

Montana  
Rail Link

WY  
LEA  
1244

WY  
LEA  
1244

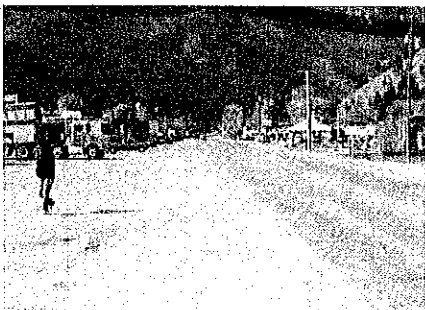
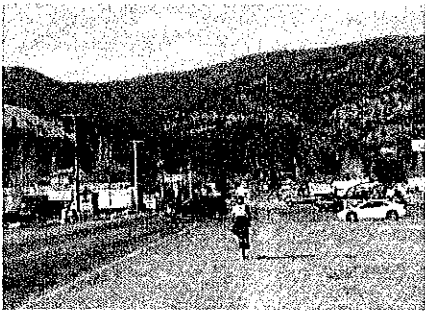
WY  
LEA  
1244

WY  
LEA  
1244

WY  
LEA  
1244

WY  
LEA  
1244

WY  
LEA  
1244



*bicycle and pedestrian safety is a key issue for Highway 200*

### ISSUES AND OBSTACLES

Several issues and obstacles were identified by the community, the main one being a lack of identity and character along Highway 200. Equally important is the lack of safety for all users of Highway 200 because it is a "free for all" due to poorly defined street and intersection delineation. This makes the corridor unsafe for automobiles, pedestrians, and cyclists. Additional Highway 200 issues include:

- The Railroad underpass is too narrow for cyclists and pedestrians and it creates a blind curve for motorists exiting Interstate 90
- The streets intersect with Highway 200 at a variety of odd angles
- There are no sidewalks or crosswalks for pedestrians
- There is no street or pedestrian lighting
- The Highway becomes invisible during snow storms due to the lack of delineation and lighting
- The aesthetics of the corridor must be improved to create a bicycle and pedestrian friendly corridor
- The majority of parking is head-in off of the Highway which creates a dangerous situation when vehicles are backing out
- Storm drainage is challenging due to no means of channelizing water and the amount of asphalt
- The actual right of way (which is 80 feet) and the useable right of way differ due to the years of private uses and parking encroaching into the public right of way