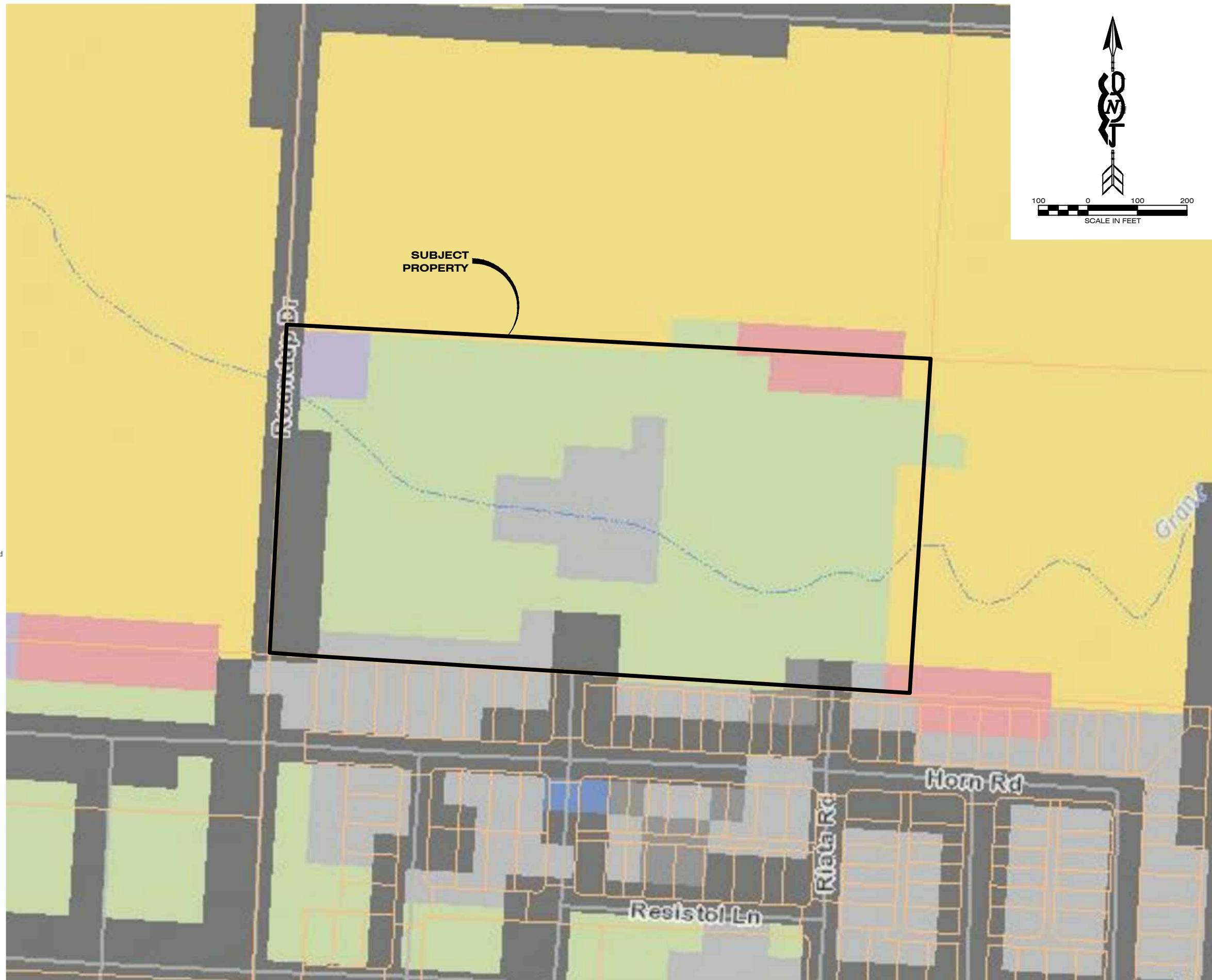


- Alpine Systems**
  - Alpine Grassland and Shrubland
    - Alpine Dwarf-Shrubland
    - Alpine Turf
  - Alpine Sparse and Barren
    - Alpine Bedrock and Scree
    - Alpine Fell-Field
    - Alpine Ice Field
- Shrubland, Steppe and Savanna Systems**
  - Deciduous Shrubland
    - Great Plains Shrubland
    - Rocky Mountain Lower Montane-Foothill Shrubland
    - Rocky Mountain Montane-Foothill Deciduous Shrubland
    - Rocky Mountain Subalpine Deciduous Shrubland
  - Sagebrush Steppe
    - Big Sagebrush Steppe
    - Montane Sagebrush Steppe
  - Sagebrush-dominated Shrubland
    - Big Sagebrush Shrubland
    - Low Sagebrush Shrubland
  - Scrub and Dwarf Shrubland
    - Mat Saltbush Shrubland
    - Mixed Salt Desert Scrub
- Grassland Systems**
  - Lowland/Prairie Grassland
    - Great Plains Mixedgrass Prairie
    - Great Plains Sand Prairie
  - Montane Grassland
    - Rocky Mountain Lower Montane, Foothill, and Valley Grassland
    - Rocky Mountain Subalpine-Montane Mesic Meadow
    - Rocky Mountain Subalpine-Upper Montane Grassland
- Wetland and Riparian Systems**
  - Bog or Fen
    - Rocky Mountain Subalpine-Montane Fen
  - Depressional Wetland
    - Great Plains Closed Depressional Wetland
    - Great Plains Open Freshwater Depression Wetland
    - Great Plains Prairie Pothole
    - Great Plains Saline Depression Wetland
    - Rocky Mountain Wooded Vernal Pool
  - Floodplain and Riparian
    - Greasewood Flat
    - Great Plains Floodplain
    - Great Plains Riparian
    - Northern Rocky Mountain Lower Montane Riparian Woodland and Shrubland
    - Rocky Mountain Lower Montane-Foothill Riparian Woodland and Shrubland
    - Rocky Mountain Subalpine-Montane Riparian Shrubland
    - Rocky Mountain Subalpine-Montane Riparian Woodland
  - Forested Marsh
    - Rocky Mountain Conifer Swamp
  - Herbaceous Marsh
    - Emergent Marsh
- Human Land Use**
  - Agriculture
    - Cultivated Crops
    - Pasture/Hay
  - Developed
    - Commercial / Industrial
    - Developed, Open Space
    - High Intensity Residential
    - Interstate
    - Low Intensity Residential
    - Major Roads
    - Other Roads
  - Recently Disturbed or Modified
    - Harvested Forest
      - Harvested forest-grass regeneration
      - Harvested forest-shrub regeneration
      - Harvested forest-tree regeneration
    - Insect-Killed Forest
      - Insect-Killed Forest
    - Introduced Vegetation
      - Introduced Riparian and Wetland Vegetation
      - Introduced Upland Vegetation - Annual and Biennial Forbland
      - Introduced Upland Vegetation - Annual Grassland
      - Introduced Upland Vegetation - Perennial Grassland and Forbland
      - Introduced Upland Vegetation - Shrub



DESIGNED: SA  
DRAFTED: SA  
CHECKED: SA  
DATE: DEC 2019

REVISIONS	DATE

LOCATION: 2702 ROUNDUP DRIVE  
PARCEL 9 OF COS 3176  
SECTION 12, T13N, R20W, P.M.M.  
MISSOULA COUNTY, MONTANA  
PREPARED FOR: DENALI DEVELOPMENT, LLC

PROJECT NAME: REMINGTON FLATS SUBDIVISION  
SHEET TITLE: EXISTING VEGETATION

406 PROJECT NO. 18-007  
SHEET: 1 OF 1