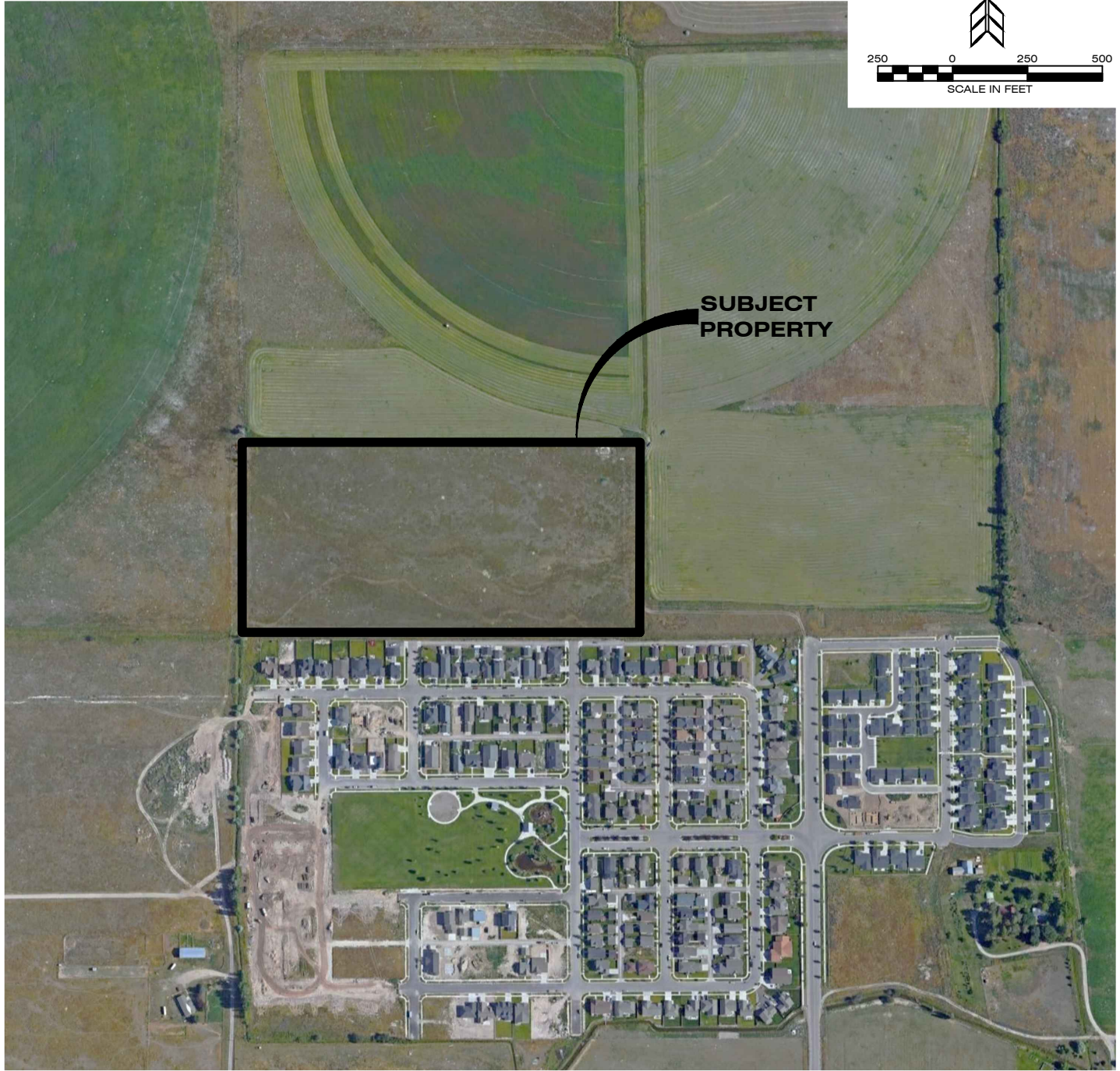


NOTE:

BASED UPON GIS DATA FROM MONTANA FISH, WILDLIFE AND PARKS, THE FOLLOWING WILDLIFE IS KNOWN TO UTILIZE THE AREA SURROUNDING THIS PROJECT:

- BLACK BEAR
- GRIZZLY BEAR
- HUNGARIAN PARTRIDGE
- MONTANA GRAY WOLF
- MOUNTAIN LION
- MULE DEER
- PHEASANT
- WHITETAIL DEER



406 ENGINEERING
CIVIL ENGINEERING
LAND USE CONSULTING
MISSOULA, MT KALISPELL, MT
1201 SOUTH 6TH ST. 905 SOUTH MAIN ST.
MISSOULA, MT 59801 KALISPELL, MT 59901
(406) 257-0679 (406) 257-0679
WWW.406ENGINEERINGINC.COM

WILDLIFE EXHIBIT
REMINGTON FLATS SUBDIVISION
PARCEL 9 OF COS 3176
SECTION 12, T13N, R20W, P.M.M.
MISSOULA COUNTY, MONTANA

PROJECT: 18-007
TAB: AERIAL
DRAFTER: AJ
DATE: 01/09/20
SHEET 1 OF 1