



406 ENGINEERING
 CIVIL ENGINEERING
 LAND USE CONSULTING
 1201 S. 66th St. W.
 Missoula, MT 59801
 (406) 257-9879
 www.406engineeringinc.com

DESIGNED:
 DRAFTED: SA/AJ
 CHECKED:
 DATE: JUNE 2020

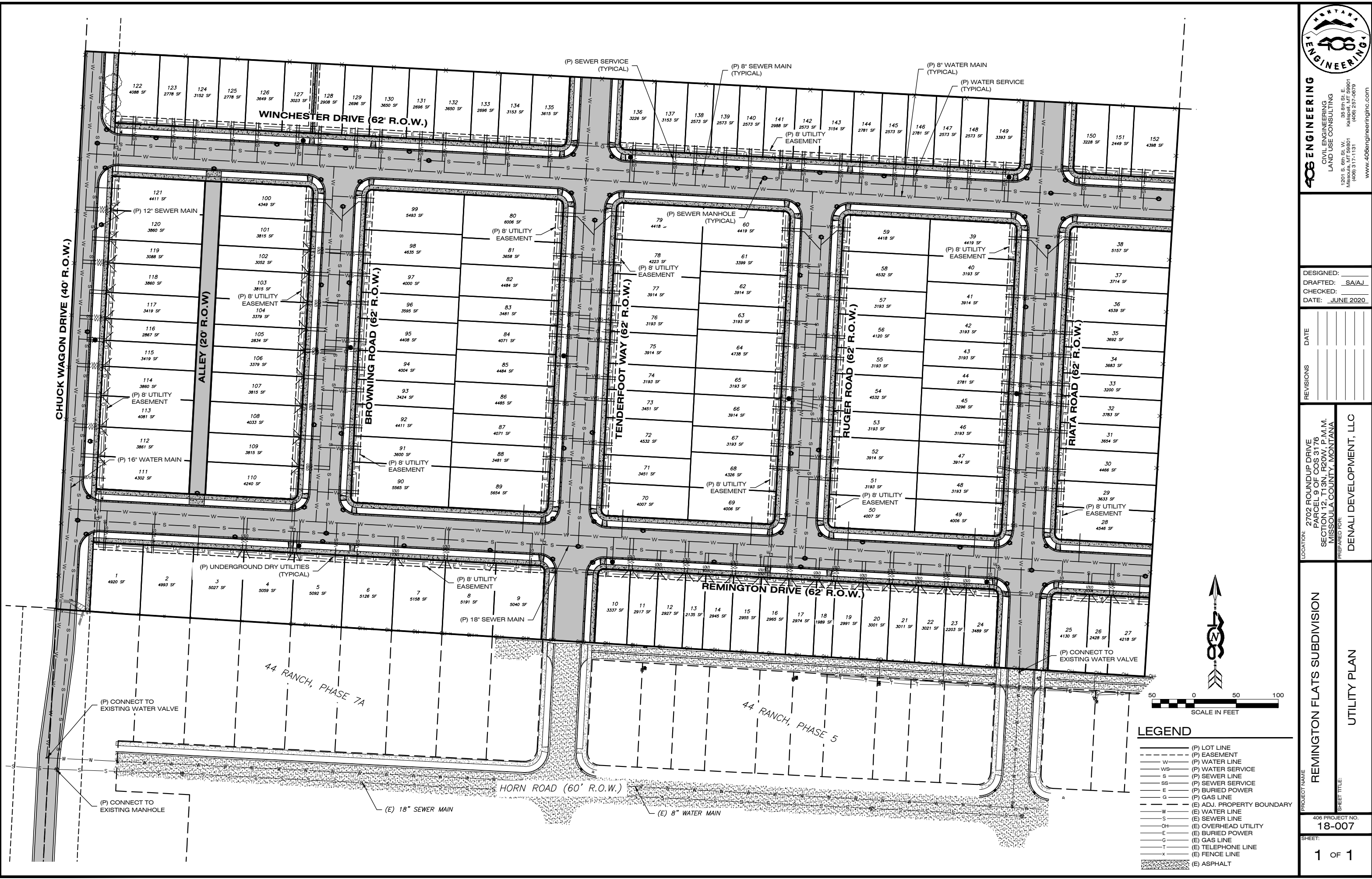
REVISIONS	DATE

LOCATION: 2702 ROUNDUP DRIVE
 PARCEL 9 OF COS 3176
 SECTION 12, T.13N., R.20W., P.M.M.
 MISSOULA COUNTY, MONTANA
 PREPARED FOR: DENALI DEVELOPMENT, LLC

PROJECT NAME: REMINGTON FLATS SUBDIVISION
 SHEET TITLE: UTILITY PLAN

406 PROJECT NO.
 18-007

SHEET:
 1 OF 1



- LEGEND**
- (P) LOT LINE
 - (P) EASEMENT
 - W (P) WATER LINE
 - WS (P) SEWER SERVICE
 - S (P) SEWER LINE
 - SS (P) BURIED POWER
 - E (P) GAS LINE
 - G (P) TELEPHONE LINE
 - W (E) ADJ. PROPERTY BOUNDARY
 - W (E) WATER LINE
 - S (E) SEWER LINE
 - OH (E) OVERHEAD UTILITY
 - E (E) BURIED POWER
 - G (E) GAS LINE
 - T (E) TELEPHONE LINE
 - x (E) FENCE LINE
 - (E) ASPHALT