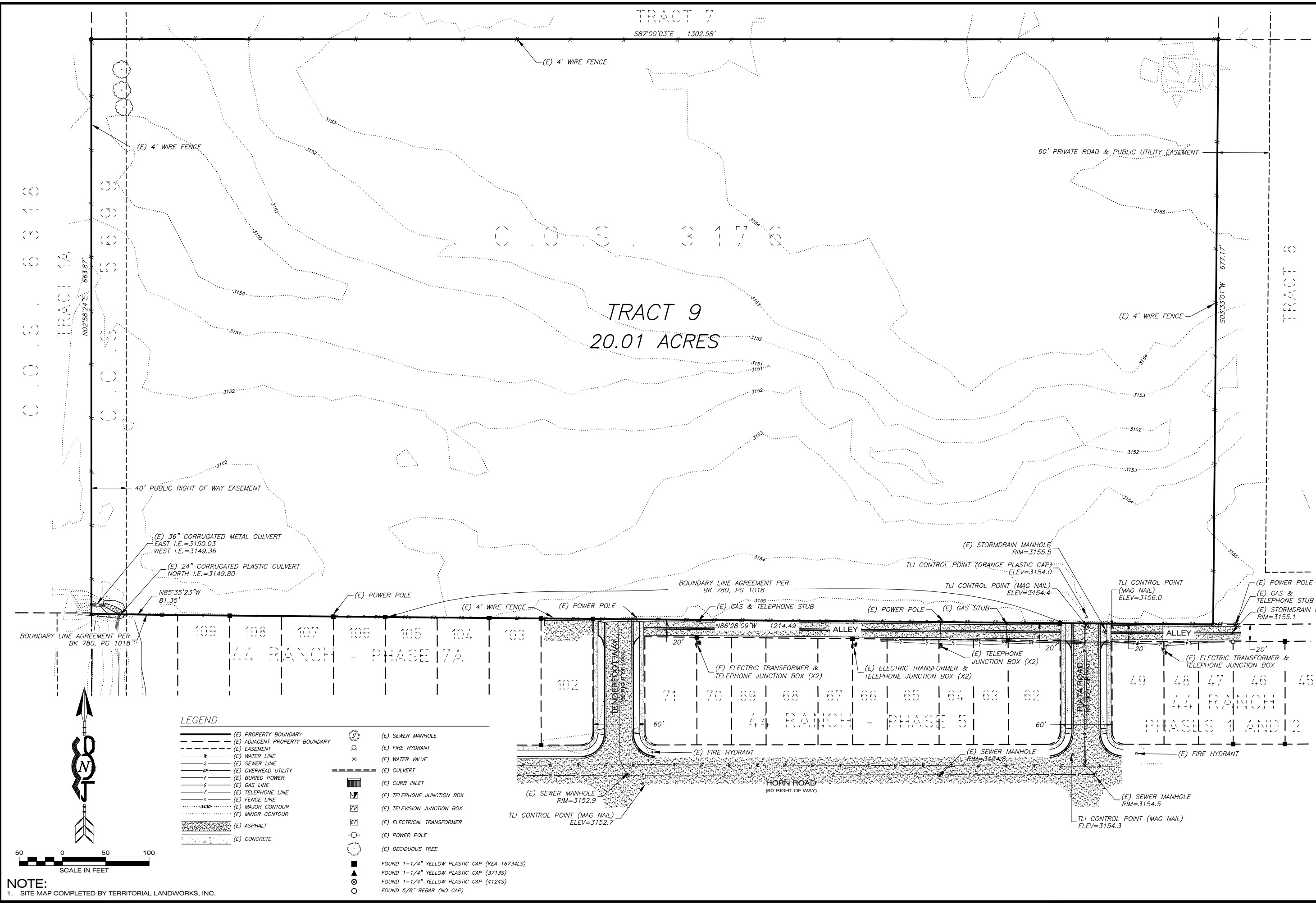


DESIGNED: _____
 DRAFTED: AE
 CHECKED: MJ
 DATE: JUNE 2014

REVISIONS	DATE

LOCATION: TRACT 9, COS 3176
 SECTION 12, T.13N., R.20W., P.M.M.
 MISSOULA COUNTY, MONTANA
 PREPARED FOR: DENALI DEVELOPMENT, LLC

PROJECT NAME: REMINGTON FLATS SUBDIVISION
 SHEET TITLE: SITE MAP EXISTING CONDITIONS
 406 PROJECT NO. 18-4986
 SHEET: 1 OF 1



- LEGEND**
- | | | | |
|--|--------------------------------|--|---|
| | (E) PROPERTY BOUNDARY | | (E) SEWER MANHOLE |
| | (E) ADJACENT PROPERTY BOUNDARY | | (E) FIRE HYDRANT |
| | (E) EASEMENT | | (E) WATER VALVE |
| | (E) WATER LINE | | (E) CULVERT |
| | (E) SEWER LINE | | (E) CURB INLET |
| | (E) OVERHEAD UTILITY | | (E) TELEPHONE JUNCTION BOX |
| | (E) BURIED POWER | | (E) TELEVISION JUNCTION BOX |
| | (E) GAS LINE | | (E) ELECTRICAL TRANSFORMER |
| | (E) TELEPHONE LINE | | (E) POWER POLE |
| | (E) FENCE LINE | | (E) DECIDUOUS TREE |
| | (E) MAJOR CONTOUR | | FOUND 1-1/4" YELLOW PLASTIC CAP (KEA 16734LS) |
| | (E) MINOR CONTOUR | | FOUND 1-1/4" YELLOW PLASTIC CAP (3713S) |
| | (E) ASPHALT | | FOUND 1-1/4" YELLOW PLASTIC CAP (4124S) |
| | (E) CONCRETE | | FOUND 5/8" REBAR (NO CAP) |

NOTE:
 1. SITE MAP COMPLETED BY TERRITORIAL LANDWORKS, INC.