



Standard Traffic Circle "Question Mark" Sign

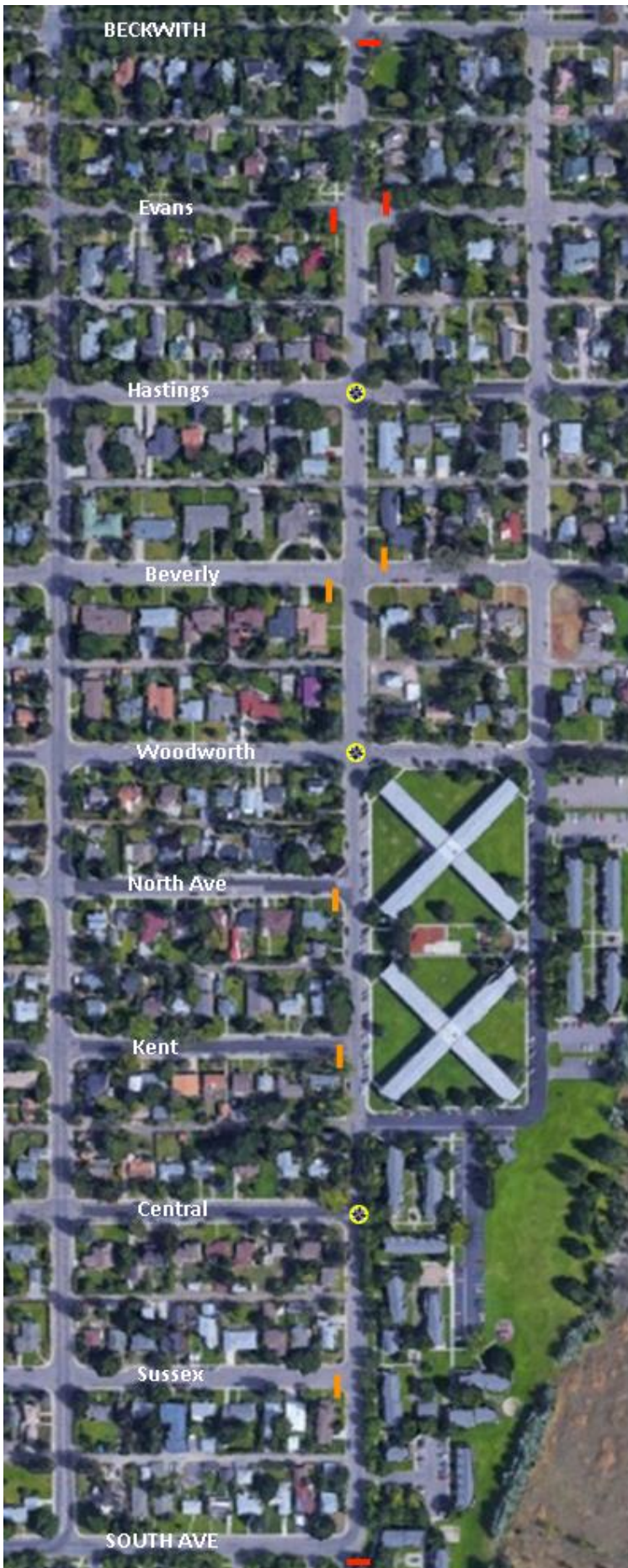


2' x 2' x 18" Hexagonal Planter



Flexible Delineator






Proposed Traffic Management Project on Maurice Ave:


Add stop signs to Sussex, Central, Kent, North, and Beverly

Add rapid deploy traffic circles to Central, Woodworth, and Hastings.

Remove stop signs at Woodworth

 = Rapid Deploy Traffic Circle (see attachment 1)

 = Existing Stop sign

 = Proposed Stop sign