



Reaching Home: Missoula's 10-Year Plan to End Homelessness

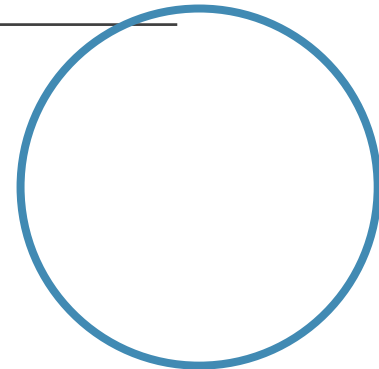
ANNUAL UPDATE | MAY 11, 2021, 3:00PM-5:00PM

Emily Armstrong, MSW (she/her)

Reaching Home Manager

City of Missoula Community Planning, Development & Innovation

Community Development Division



As recommended by Tony Incashola and Thompson Smith and the
Séliš-Qlispé Cultural Committee



“We, as members of the homelessness and housing system in Missoula, acknowledge that we are in the homelands of the Salish and Kalispel people. Today, we offer our respect for their history and culture, for their ancient and continuing presence in this landscape, and for the path they have shown us in caring for this place for the generations to come.”

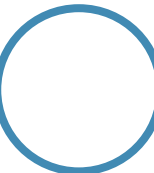
We recognize the ways in which systems of government have contributed to the disconnection of Indigenous peoples from these lands and their families, culture, and heritage. It is our responsibility as individuals and as a collective to acknowledge the white supremacist culture underlying our practices and to be accountable to demanding respect for tribal sovereignty and Indigenous cultures and the needs and perspectives of Indigenous peoples.



Ways to engage in Western Montana



- Spend time learning about Séliš-Qlispé history, culture and language
<http://www.csktsalish.org/index.php>
- Support and encourage Native leadership through Western Native Voice
<https://westernnativevoice.org/>
 - Donate to the Western Native Voice COVID-19 Relief Fund:
<https://app.cheerfulgiving.com/c/wnv-covid-19-relief-fund>
- Support Montana's BIPOC community through mutual aid
 - MT BIPOC Mutual Aid Fund:
<https://www.instagram.com/mt.bipoc.mutual.aid/?hl=en>
 - Venmo: @mtbipocaid
- Advocate for Indigenous rights and access to voting
 - MT Native Vote: <https://mtnativevote.org/>
- Listen to All My Relations podcast: <https://www.allmyrelationspodcast.com/>



Agenda

3:00pm-3:05pm **Welcome and Overview**

3:05pm-3:40pm **Update from Reaching Home Manager**

3:40pm-3:45pm **Panelist Introductions**

3:45pm-4:50pm **Panel**

4:50pm-5:00pm **Wrap up**

PERSON-FIRST LANGUAGE

➤ **Language that makes you think about the person involved**, not an aspect of their situation

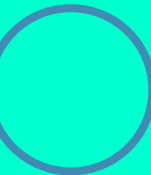
- *Not a moral failing*

➤ **People without housing, person experiencing homelessness**

➤ **Person who is unhoused or houseless**

➤ Avoid: "transient", "the homeless"

➤ Other options: "urban camper", "curbside community"



We are here

PHASE 1

2012-2014

Creating rapid, visible and meaningful change

Setting the foundation for future developments

PHASE 2

2015-2018

Building a coordinated system to end homelessness

Fostering connections and relationships to decrease barriers

PHASE 3

2019-2022

Making adjustments to ensure sustainability

Reflecting on achievements, challenges, and gaps

Updating based on advancing best practices

Considering how to sustain progress

10-YEAR PLAN GOALS

A **single point of entry** links people quickly to services to keep them housed

We produce **better information** about homelessness, for those who are homeless and for the rest of the community

Missoula needs to be more organized about social spending, and will need to **spend more local money on housing solutions**

We must develop **pools of money** to assist people with funds to handle economic transitions and housing emergencies

Missoula must create **more affordable housing and more housing that is affordable**

The way people are **discharged from state institutions** such as the prison must be **improved**

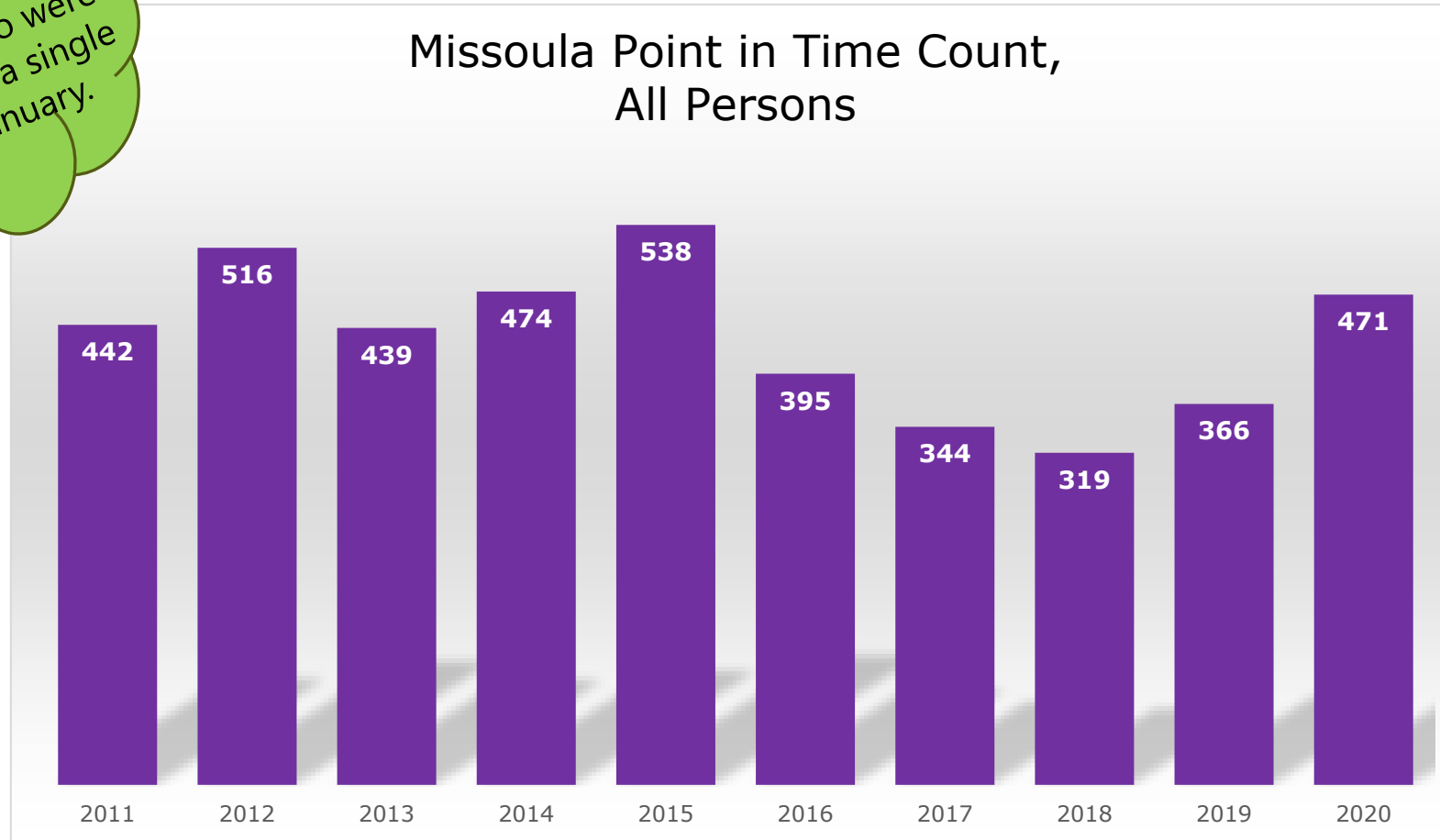
Services, treatment and case-management must be more available to those who are homeless, those who've recently moved into housing or those at risk of losing housing

Landlords are part of the solution to homelessness, and will look first to work with people in transition rather than evict them

Emergency shelter remains available and supported by city, county and private funding

Transitional housing must be readily available as a step in the move to permanent housing

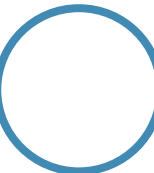
Number of individuals who were unshoused on a single night in January.



Data comes from Montana Continuum of Care Coalition

NOTE:

- The PiT Count is a snapshot of just one night; homelessness is a fluid and rapidly changing experience
- These statistics include data from Hamilton

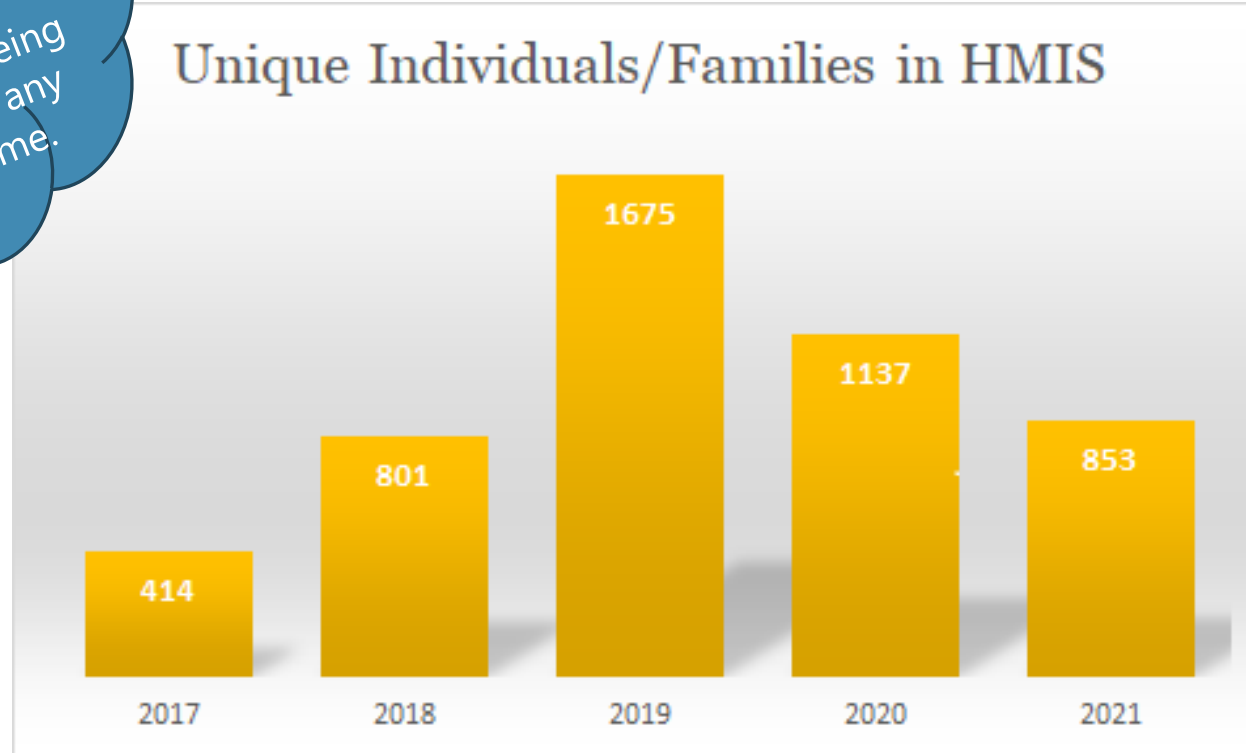


MISSOULA COORDINATED ENTRY SYSTEM



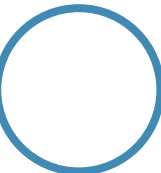
HMIS = Homelessness Management Information System

Number of individuals/families who had an experience of being unhoused for any length of time.



NOTE:

- MCES began in 2017; the system has become more robust in years since
- The 2020 data was deeply impacted by the COVID-19 pandemic



HIGHLIGHTS



- 38 agencies in MCES
- 90+ individuals trained in MCES
- 11 of 12 apartments leased at Cornerstone, an MHA property
- Listening sessions with lived experts
- Lived experts in solution and evaluation spaces
- 20+ staff at weekly case conferencing to review By-Name-List
- Centralized Housing Solutions Fund has supported 56 individuals
- Emergency Winter Shelter served 509 individuals; 137 people on busiest night
- Non-Congregate Shelter served 283 individuals; helped permanently house 10
- TSOS successfully supported 53 residents
- Launched quarterly newsletter in partnership with United Way





Homelessness is complex.

racial inequality

childhood trauma and family conflict

lack of housing that is affordable

criminal justice system

lack of mental health and addiction treatment services

poverty

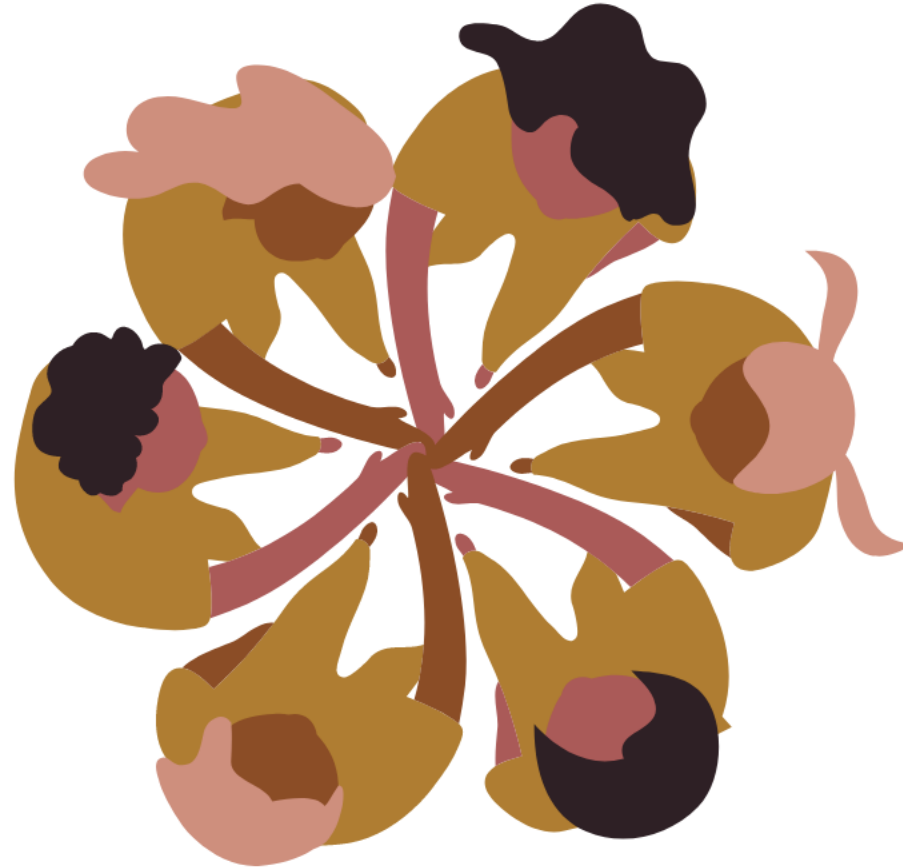
domestic violence

lack of affordable healthcare

stagnant wages

rural inequity

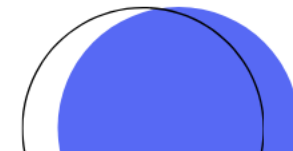
**homelessness
is a national
challenge**



**"perceived
homelessness"**

housing first

**continuum of
options**





“We build community
by being community.”

Becky Bishop,
Family Promise Missoula

A vertical bar of five colored dots (blue, green, orange, grey, red) is located on the left side of the slide.

PANELISTS

Aleathea Standing Rock, YWCA Rapid Rehousing Coordinator

Alex Ramsing, Homeward Landlord Liaison

Anna Nilles, PHC FUSE Program Development Manager

Ashley Corbally, Hope Rescue Mission Program Coordinator for
Temporary Safe Outdoor Space

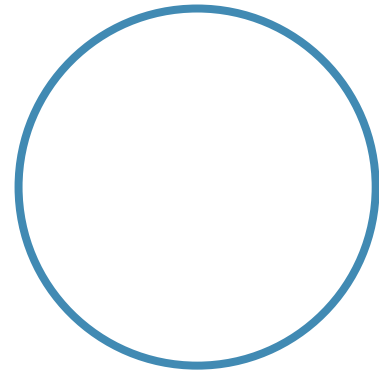
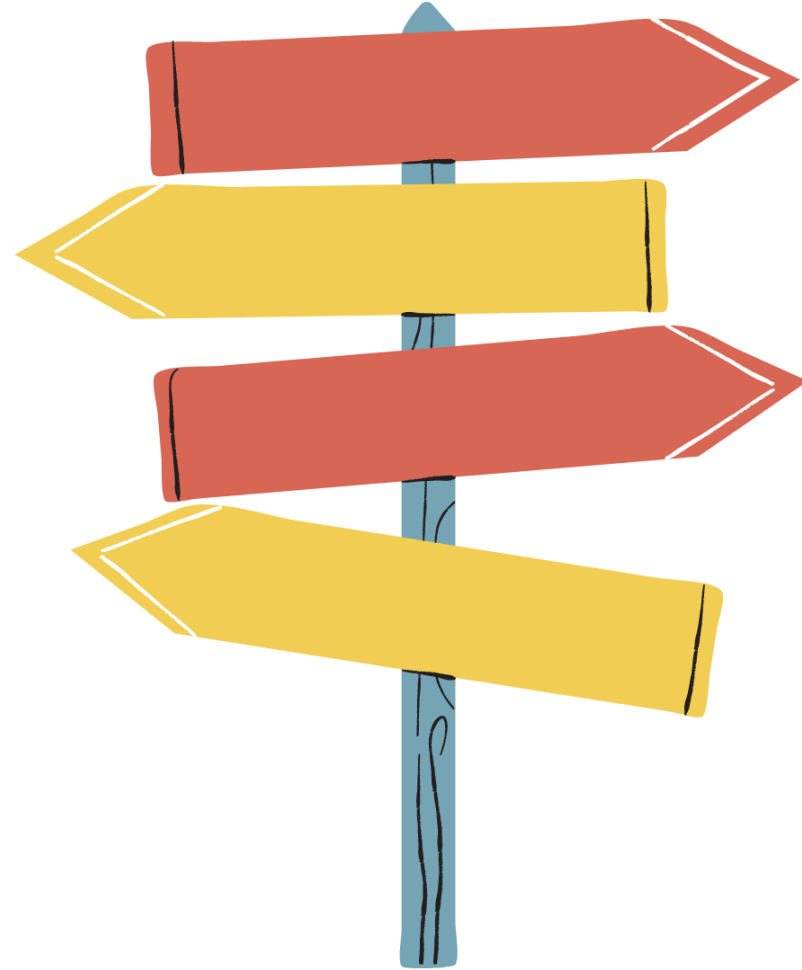
Councilmember Bryan von Lossberg, City Council Ward 1

Christa Weathers, Open Aid Alliance Executive Director

Winnie Lohof, WMMHC PATH Care Coordinator



WHAT'S NEXT?



Thank you!

Emily Armstrong, MSW (she/her)

armstronge@ci.Missoula.mt.us

406-552-6393

Reaching Home Manager

City of Missoula Community Planning, Development &
Innovation

