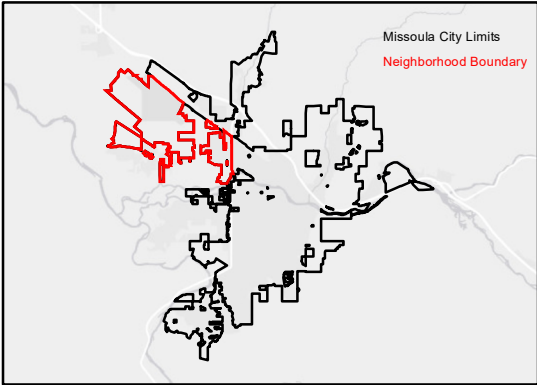
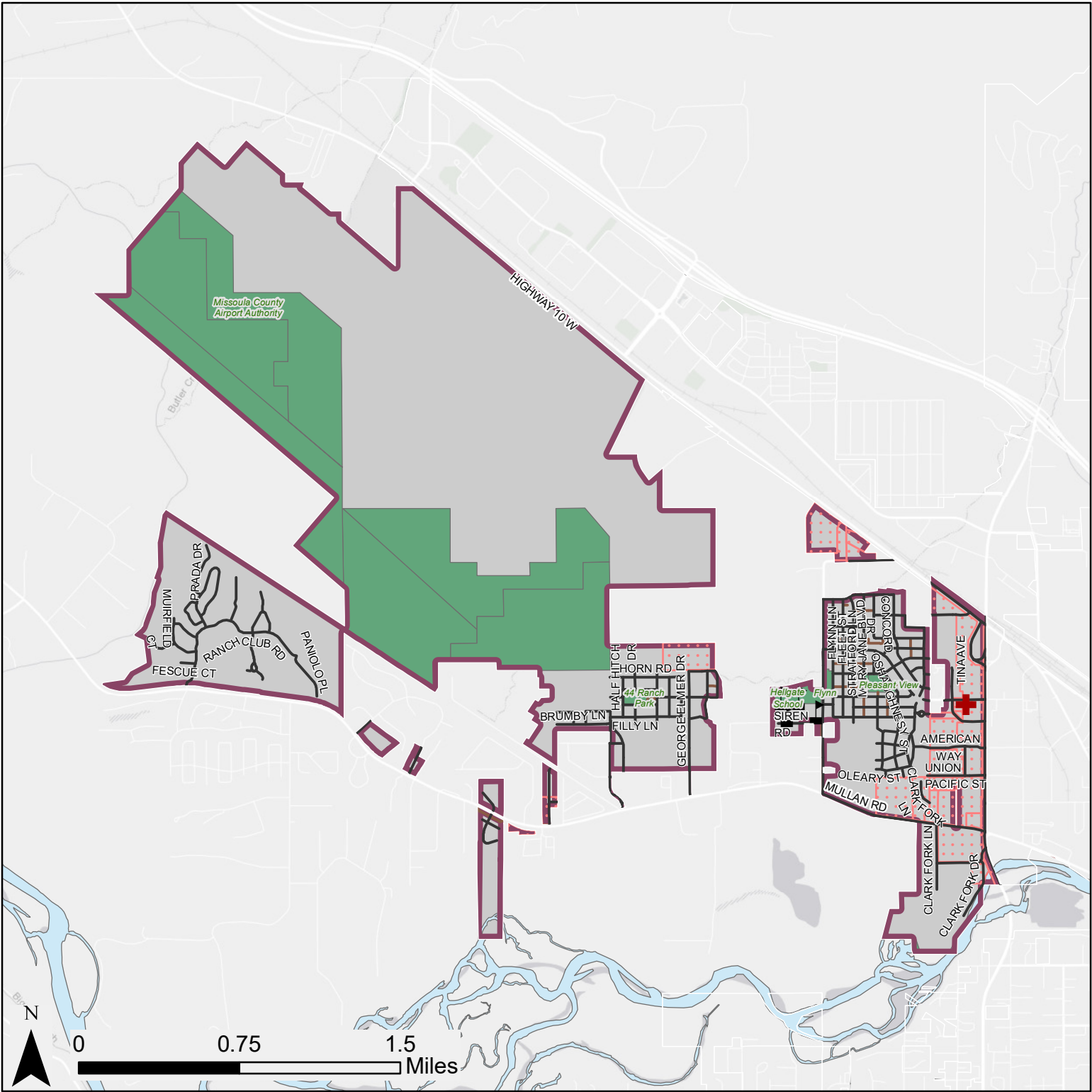


Captain John Mullan



- Medical Clinics and Hospitals
- Schools
- Streets
- Trails and Multi-use Paths
- Commercial Zoning
- Neighborhood Extent
- Rivers
- Parks and Open Space

Service Layer Credits: Esri, HERE, Garmin, (c) OpenStreetMap contributors, and the GIS user community  
Coordinate System: Lambert Conformal Conic, North American 1983, Central Meridian: -114  
Name: neighborhood maps 2021  
Cartography: Neil Matthews-Pennanen  
Sources: City of Missoula CPDI and GIS Services, Missoula County GIS Division, Montana State Library

