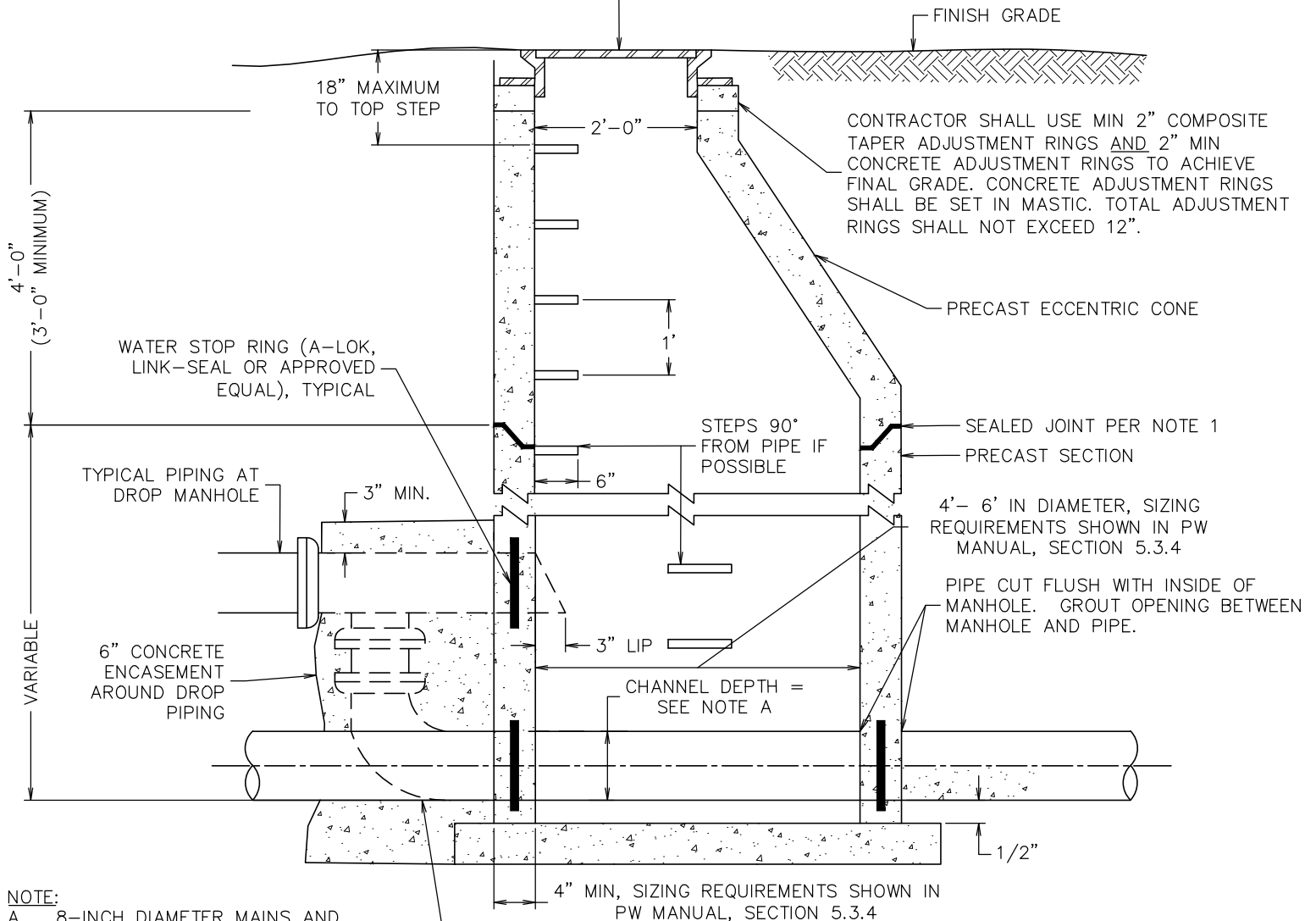


REFER TO STD 604A-B
AND 605 FOR LID AND
RING DETAIL



- NOTE:**
- A. 8-INCH DIAMETER MAINS AND SMALLER SHALL HAVE A FLOW CHANNEL FORMED AT LEAST TO THE SPRING LINE OF THE PIPE. PIPES GREATER THAN 8" IN DIAMETER SHALL HAVE FLOW CHANNELS FORMED TO THE FULL HEIGHT OF THE CROWN OF THE OUTLET.
- TYPICAL PIPING AT STANDARD MANHOLE, REFER TO PW MANUAL SECTION 5.3.4 FOR FALL ACROSS MANHOLE

GENERAL NOTES:

1. ALL JOINTS BETWEEN MANHOLE SECTIONS, ADJUSTING RINGS, MANHOLE RING AND TOP SECTION, SHALL BE WATERTIGHT. JOINTING MATERIAL SHALL BE "CONSEAL" OR EQUAL.
2. CONCRETE FOR DROP STRUCTURES SHALL BE FORMED.
3. FLAT-TOP BARREL SHALL BE USED WHEN DISTANCE FROM TOP OF PIPE TO RIM IS LESS THAN 5- FEET.

MANHOLE-TO-PIPE DATA TABLE			
MANHOLE DIA.	WALL THICKNESS	PIPE DIA >	PIPE DIA ≤
4'-0"	0'-5"	---	24"
5'-0"	0'-6"	24"	36"
6'-0"	0'-7"	36"	48"
JUNCTION BOX	---	48"	---

*MINIMUM PIPE DIAMETER FOR PUBLIC MAINS/LATERALS = 12 INCHES

December 2021

Stormwater Manhole (Sheet 1 of 3)



Engineering Division

Handwritten signature of Andy Schultz

Approved By
Utility Engineer
Andy Schultz, PE

Adopted: 09/28/2020
Revised: 02/01/2021

STD - 612-1