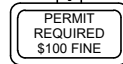
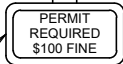
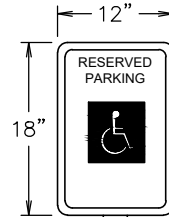
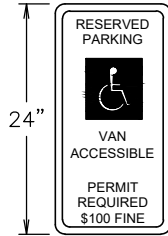
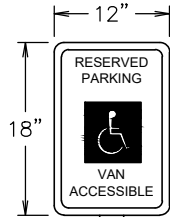


R7-8
FOR VAN
SPACES

R7-8
ALTERNATE

R7-8



REQUIRED AS PER
MCA 49-4-307

5' MIN

5' MIN

SEE STD-720 FOR
MOUNTING DETAILS

GRADE

GRADE

STANDARD SIGN BASE
(USE IS ONLY PERMITTED ON
PRIVATE PROPERTY)

REPLACEABLE / BREAK-AWAY
(USE IS REQUIRED ON PUBLIC
RIGHT-OF-WAY)

December 2021



Engineering Division

Accessible Parking Spaces Signage Requirements

Approved By
City Engineer
Kevin J. Slovarp

Adopted: 01/27/1999
Revised: 01/12/2017

STD - 787