










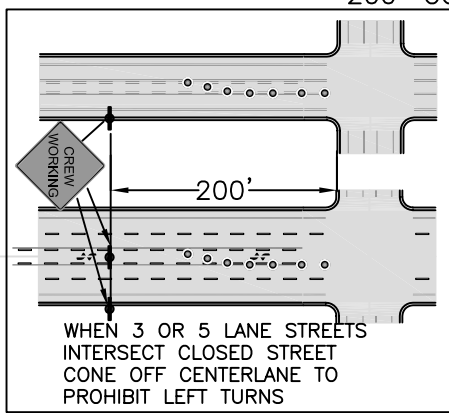
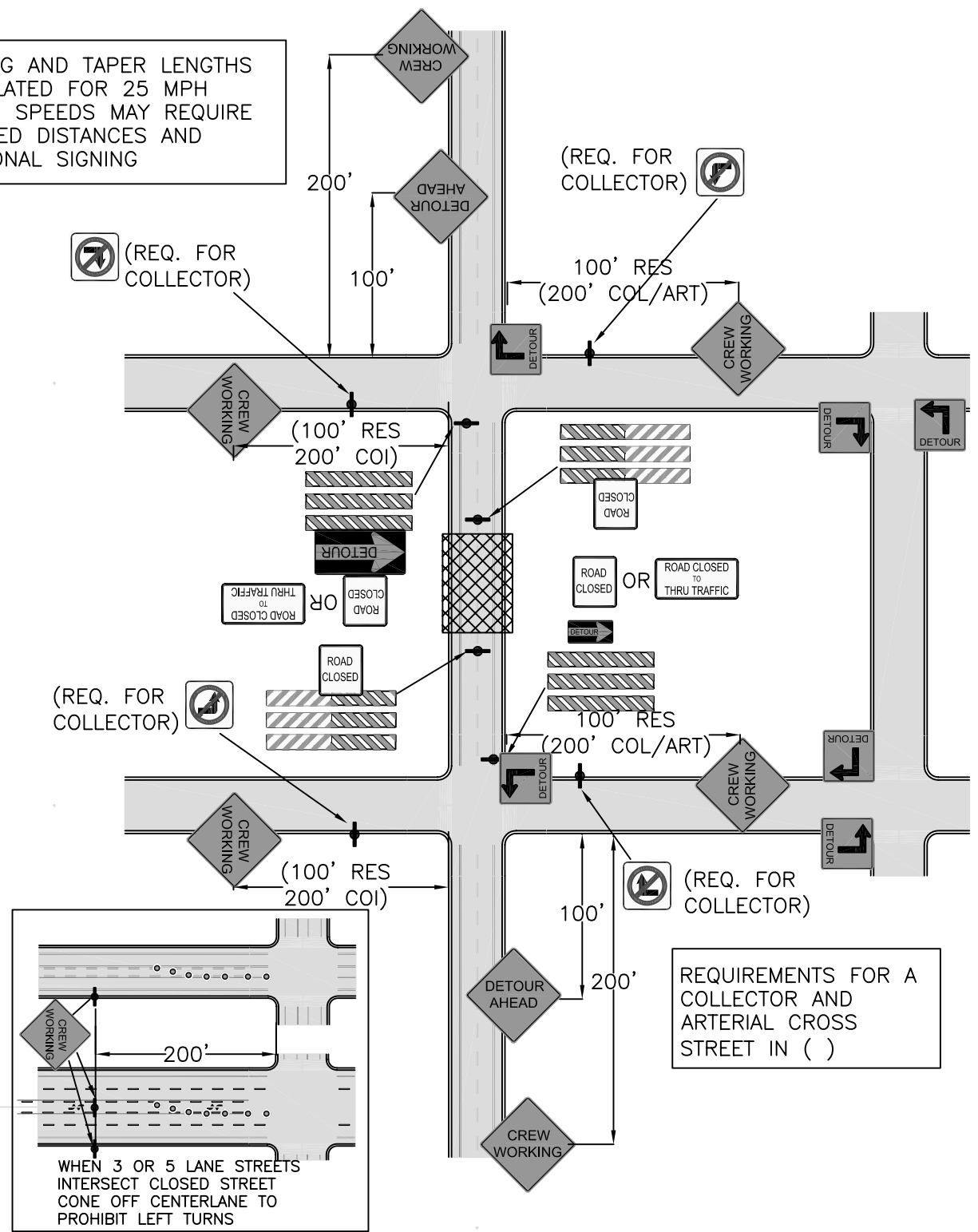


-  TYPE III BARRICADE
-  TYPE II BARRICADE
-  TYPE I BARRICADES
-  WARNING SIGNS
-  DETOUR SIGNS
-  DETOUR ROUTING
-  REGULATORY SIGNS
-  DELINEATORS
-  SIGN LOCATION SYMBOL
-  WORK ZONE
-  SIDEWALK CLOSED
MUST BE USED
WHENEVER A CITY
SIDEWALK IS TO BE
CLOSED

TRAFFIC CONTROL MUST CONFORM TO THE MANUAL ON UNIFORM TRAFFIC CONTROL DEVICES (MUTCO)

SPACING AND TAPER LENGTHS
CALCULATED FOR 25 MPH
HIGHER SPEEDS MAY REQUIRE
CHANGED DISTANCES AND
ADDITIONAL SIGNING



REQUIREMENTS FOR A
COLLECTOR AND
ARTERIAL CROSS
STREET IN ()

Digital Standard Drawings and other maps are available on the City website: http://www.ci.missoula.mt.us/publicworks/gis_maps.htm



TYPICAL TRAFFIC CONTROL PLAN

STREET CLASSIFICATION:
2 LANE COLLECTOR
CLOSE STREET

Revision Date:
03/2004

TC - 207