

CAPITAL IMPROVEMENT PROGRAM
City of Missoula CIP Project Request Form FY 2012-2016

Program Category:	Project Title:	10 Project #	11 Project #	12 Project #
Street Improvements	Scott and Toole Intersection Improvements			S-23

Description and justification of project and funding sources:

Since construction of the Safeway Grocery Store on West Broadway, installation of a traffic signal at Toole and Broadway, and closure of Nora Street between Pine and West Broadway, there have been significant traffic pattern changes in the area that have affected the Toole/Scott intersection. It is in need of additional intersection control above and beyond its current configuration of a 2-way stop of Scott Street. The proposed solution to intersection control here is an urban mini roundabout to increase not only capacity but also safety and operation.

Is this equipment prioritized on an equipment replacement schedule?

Yes

No

NA

X

Are there any site requirements:

How is this project going to be funded:

Funding Source	Accounting Code	FY12	FY13	FY14	FY15	FY16	Funded in Prior Years
MRA		20,000	50,000				
City labor in-kind			61,500				
Transportation Impact Fees			33,000				
		20,000	144,500	-	-	-	-

How is this project going to be spent:

Budgeted Funds	Accounting Code	FY12	FY13	FY14	FY15	FY16	Spent in Prior Years
A. Land Cost							
B. Construction Cost			122,273				
C. Contingencies (10% of B)			12,227				
D. Design & Engineering (15% of B)		20,000	10,000				
E. Percent for Art (1% of B)							
F. Equipment Costs							
G. Other							
		20,000	144,500	-	-	-	-

Does this project have any additional impact on the operating budget:

Expense Object	Accounting Code	FY12	FY13	FY14	FY15	FY16	Spent in Prior Years
Personnel							
Supplies							
Purchased Services							
Fixed Charges							
Capital Outlay							
Debt Service							
		-	-	-	-	-	-

Description of additional operating budget impact:

Responsible Person:

Responsible Department:

Date Submitted to Finance

Today's Date and Time

Preparer's Initials

Total Score

Kevin Slovarp

Public Works

3/18/2011

4/6/2011 14:55

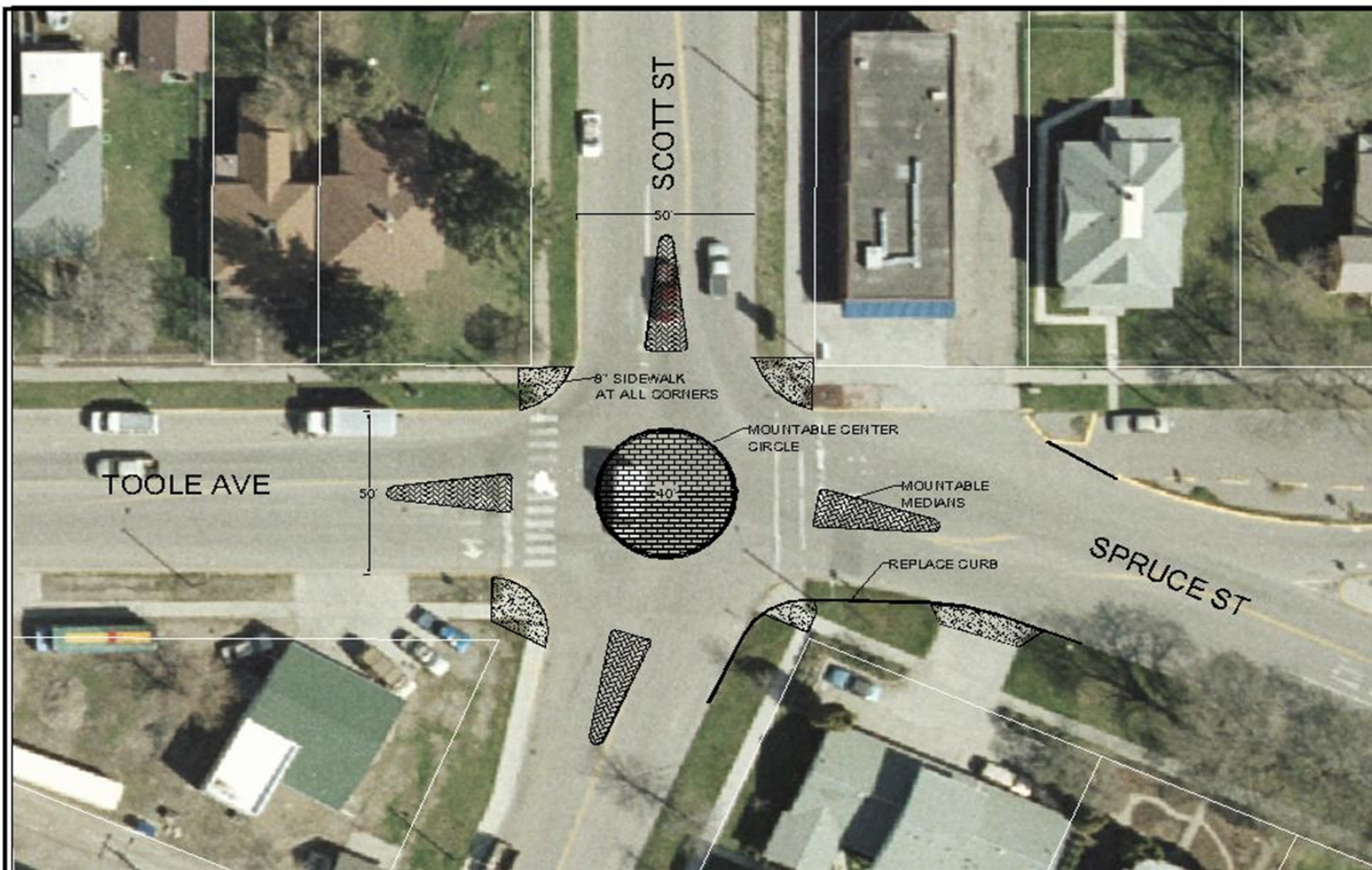
JSM

33

CAPITAL IMPROVEMENT PROGRAM					
Project Rating					
(See C.I.P. Instructions For Explanation of Criteria)					
Program Category:	Project Title:			12 Project #	
Street Improvements	Scott and Toole Intersection Improvements			S-23	
Qualitative Analysis		Yes	No	Comments	
1. Is the project necessary to meet federal, state, or local legal requirements? This criterion includes projects mandated by Court Order to meet requirements of law or other requirements. Of special concern is that the project be accessible to the handicapped.					
2. Is the project necessary to fulfill a contractual requirement? This criterion includes Federal or State grants which require local participation. Indicate the Grant name and number in the comment column.					
3. Is this project urgently required? Will delay result in curtailment of an essential service? This statement should be checked "Yes" only if an emergency is clearly indicated; otherwise, answer "No". If "Yes", be sure to give full justification.					
4. Does the project provide for and/or improve public health and/or public safety? This criterion should be answered "No" unless public health and/or safety can be shown to be an urgent or critical factor.					
Quantitative Analysis	Raw Score Range	Comments		Weight	Total Score
5. Does the project result in maximum benefit to the community from the investment dollar?	(0-3) 3	Intersection improvements would increase the efficiency of the transportation system and would directly benefit the operation of Missoula's transit system.		5	15
6. Does the project require speedy implementation in order to assure its maximum effectiveness?	(0-3) 1	Additional intersection control, safety, and operational improvements are needed now.		4	4
7. Does the project conserve energy, cultural or natural resources, or reduce pollution?	(0-3) 2	Reductions in fuel consumption and vehicle emissions are anticipated after construction of the intersection improvement.		3	6
8. Does the project improve or expand upon essential City services where such services are recognized and accepted as being necessary and effective?	(0-2) 1	City service to citizens includes the effective operation and safety of its transportation system.		4	4
9. Does the project specifically relate to the City's strategic planning priorities or other plans?	(0-3) 1	Improves level of service to citizens with diverse fiscal resources.		4	4
Total Score					33

**PROPOSED IMPROVEMENTS TO
SCOTT/TOOLE/SPRUCE INTERSECTIONS**
COST ESTIMATES

DESCRIPTION	QUANTITY	UNIT	PRICE	TOTAL
20' 8" THICK MOUNTABLE CIRCLE	1250	SF	\$25.00	\$31,250.00
8" THICK MOUNTABLE MEDIANS (FOUR)	1080		\$25.00	\$27,000.00
REMOVE/REPLACE CURB (ALL CORNERS)	225		\$30.00	\$6,750.00
replaces curbs at corners with thicker curb				
to prevent breakage by trucks cutting corner				
REMOVE/REPLACE SIDEWALK (ALL CORNERS)	800	SF	\$10.00	\$8,000.00
replaces sidewalks at corners with 8" concrete				
to prevent breakage by trucks cutting corner				
RELOCATE SUMP	1	EA	\$1,500.00	\$1,500.00
SIGNING STRIPING	1	LS	\$10,000.00	\$10,000.00
MILL AND PAVE	20000	SF	\$2.00	\$40,000.00
MISC	1	LS	\$10,000.00	\$10,000.00
ENGINEERING	1			\$30,000.00
			Total	\$164,500.00



PROPOSED CONCEPT MINI-ROUND ABOUT
SCOTT/TOOLE/SPRUCE