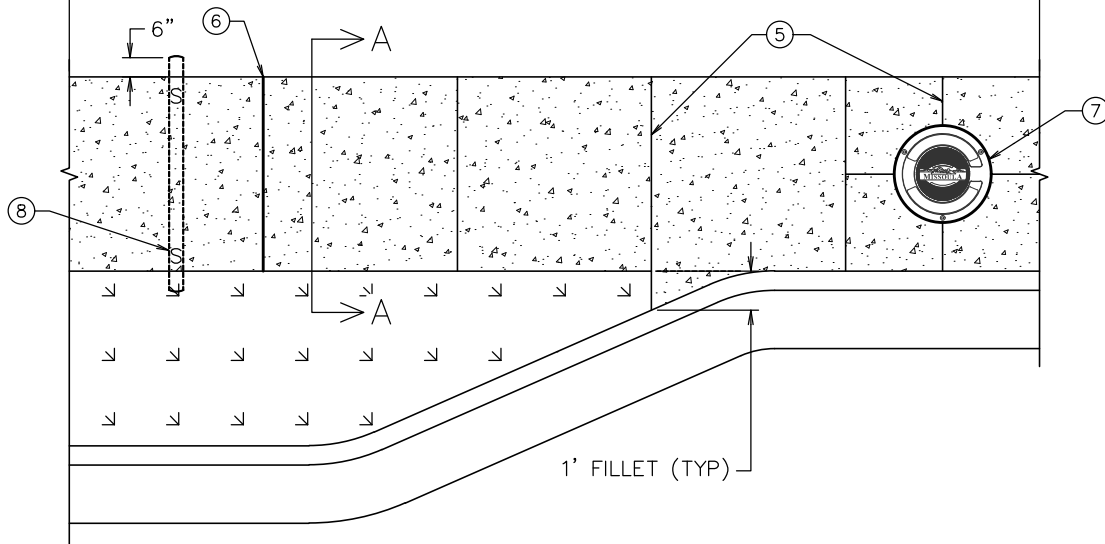
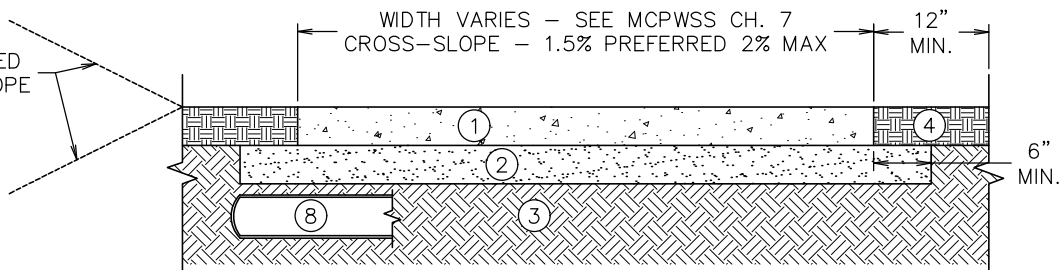


MAXIMUM RUNNING GRADE 5%.
 INCREASED SLOPE MUST BE APPROVED BY CITY ENGINEER.
 EXPANSION JOINTS NOT ALLOWED BETWEEN CURB AND SIDEWALK.



3:1 PREFERRED
 2:1 MAX. SLOPE



SECTION A-A

KEYED NOTES:

- ① SEE MCPWSS CH. 7 FOR SIDEWALK WIDTH & THICKNESS REQUIREMENTS
- ② BASE COURSE. SEE CITY OF MISSOULA MODIFICATIONS TO MPWSS SECTIONS 02235 AND 02529
- ③ SUBGRADE. SEE CITY OF MISSOULA MODIFICATION TO MPWSS SECTION 02230
- ④ SHOULDER. SEE CITY OF MISSOULA MODIFICATION TO MPWSS SECTION 02529
- ⑤ CONTRACTION JOINTS. SEE CITY OF MISSOULA MODIFICATION TO MPWSS SECTION 02529
- ⑥ EXPANSION JOINTS. SEE CITY OF MISSOULA MODIFICATION TO MPWSS SECTION 02529
- ⑦ ISOLATION JOINTS. FOR USE AROUND OBJECTS WITHIN OR PROTRUDING FROM SIDEWALK (E.G. AROUND MANHOLES LIDS, VALVE BOXES, UTILITY POLES, HYDRANTS, POLE BASES, ETC.)
- ⑧ SLEEVE. TYP 4" SCH 40 PVC. MUST BE BELOW BASE AND IN SUBGRADE. EXTEND 6" BEYOND EDGE OF SIDEWALK. STAMP "S" IN THE FINISH SURFACE DIRECTLY ABOVE THE SLEEVE AT BOTH EDGES OF SIDEWALK.



Engineering Division

Typical Sidewalk Section

Approved By
 City Engineer
 Kevin J. Slovarp

Adopted: 02/29/1996
 Revised: 01/01/2023

STD - 752