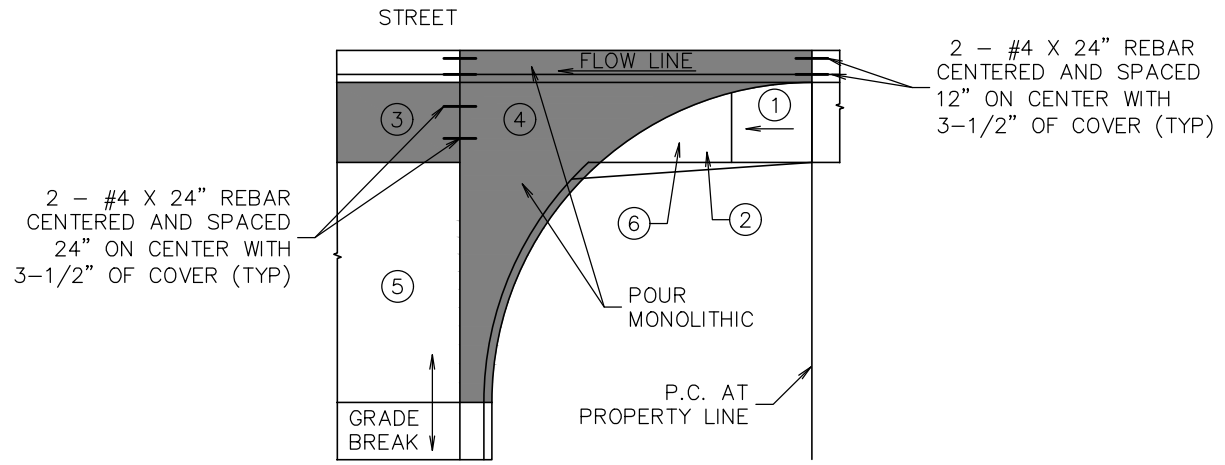


TYPICAL CONFIGURATION



ALTERNATE CONFIGURATION

KEYED NOTES:

- ① RAMP
- ② LANDING
- ③ SIDEWALK/CROSSWALK
- ④ FILLET. POUR MONOLITHIC AS SHOWN TO ELIMINATE STRUCTURALLY WEAK CONCRETE TAPERS
- ⑤ DRIVEWAY SECTION. CONCRETE OR ASPHALT
- ⑥ DETECTABLE WARNING PANEL. REQUIRED WHEN STOP/YIELD CONTROL SIGNAGE IS PRESENT OR REQUIRED

GENERAL NOTES:

- 1. SEE MCPWSS CH. 7 AND CITY OF MISSOULA MODIFICATION TO MPWSS SECTION 02529 FOR ADDITIONAL TECHNICAL REQUIREMENTS
- 2. GRADE SHALL BE DESIGNED TO CONFINE STORM RUNOFF TO THE STREET. SLOPE DRIVEWAY FILLET TOWARDS STREET
- 3. GRADES SHALL NOT EXCEED 2% THROUGH THE SIDEWALK/CROSSWALK PORTIONS OF THE APRON AND FILLETS



Engineering Division

**Standard Approach - Curbside Sidewalk
(25 or More Parking Spaces)**

Approved By
City Engineer
Kevin J. Slovarp

Adopted: 02/29/1996
Revised: 01/01/2023

STD - 774