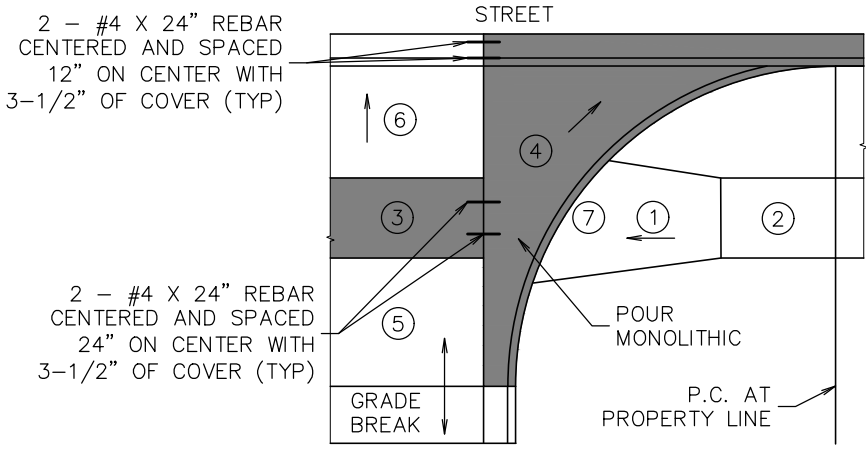


TYPICAL CONFIGURATION



ALTERNATE CONFIGURATION

KEYED NOTES:

- ① RAMP
- ② LANDING
- ③ SIDEWALK/CROSSWALK
- ④ FILLET. POUR MONOLITHIC AS SHOWN TO ELIMINATE CONCRETE TAPERS. 8" CONCRETE DEPTH
- ⑤ DRIVEWAY SECTION. CONCRETE OR ASPHALT
- ⑥ APRON SECTION. 8" CONCRETE DEPTH
- ⑦ DETECTABLE WARNING PANEL. REQUIRED WHEN STOP/YIELD CONTROL SIGNAGE IS PRESENT OR REQUIRED

GENERAL NOTES:

1. SEE MCPWSS CH. 7 AND CITY OF MISSOULA MODIFICATION TO MPWSS SECTION 02529 FOR ADDITIONAL TECHNICAL REQUIREMENTS
2. GRADE SHALL BE DESIGNED TO CONFINE STORM RUNOFF TO THE STREET. SLOPE DRIVEWAY FILLET TOWARDS STREET
3. GRADES SHALL NOT EXCEED 2% THROUGH THE SIDEWALK/CROSSWALK PORTIONS OF THE APRON AND FILLETS



Engineering Division

Standard Approach - Boulevard Sidewalk
(25 or More Parking Spaces)

Approved By
City Engineer
Kevin J. Slovarp

Adopted: 02/29/1996
Revised: 01/01/2023

STD - 775