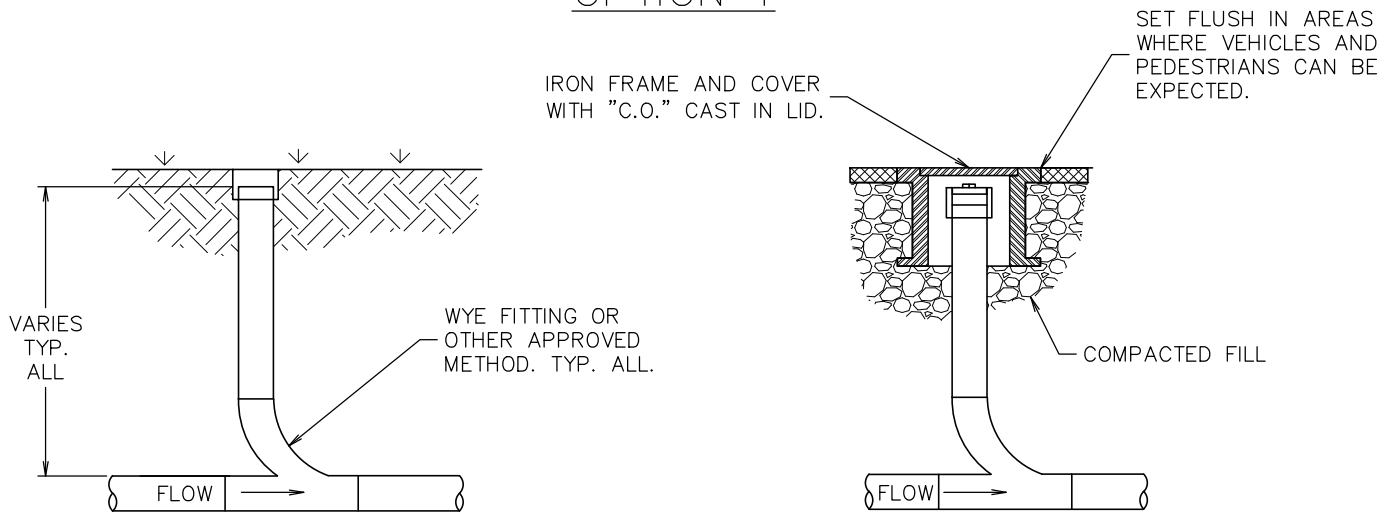
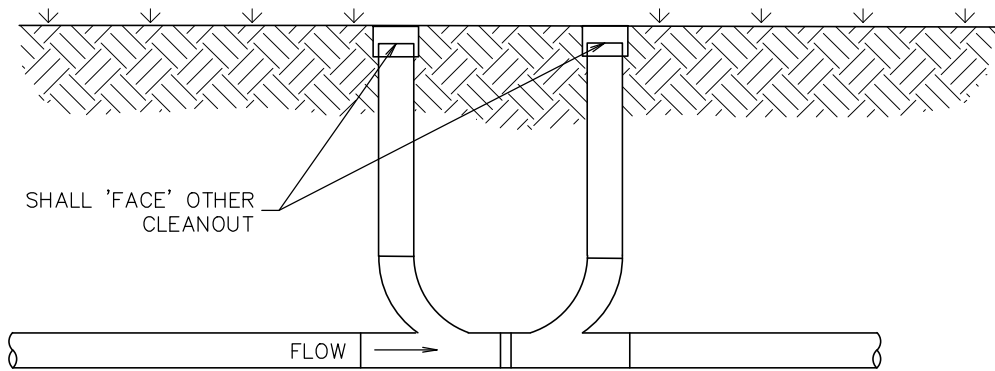


OPTION 1



OPTION 2



GENERAL NOTES:

1. CONSTRUCTION MATERIALS AND PROCEDURES SHALL COMPLY WITH MONTANA PUBLIC WORKS STANDARD SPECIFICATIONS (MPWSS), 7TH EDITION, APRIL 2021, AS MODIFIED BY THE MISSOULA CITY PUBLIC WORKS STANDARDS AND SPECIFICATIONS MANUAL, APPENDIX 2-A (STANDARD MODIFICATIONS TO MPWSS), CURRENT EDITION.
2. CLEANOUTS SHALL BE PLACED WITHIN TWO FEET (OR APPROVED DISTANCE) OF THE STRUCTURE AND EVERY 100 FEET OF DISTANCE OR TOTAL CHANGE OF HORIZONTAL DIRECTION OF 135° OR MORE.
3. ALL CLEANOUTS SHALL BE EXTENDED TO FINISHED GRADE. CLEANOUTS INSTALLED UNDER ASPHALT OR CONCRETE SHALL HAVE A METAL RING AND COVER WITH "C.O." CAST IN THE LID SET TO GRADE.
4. CLEANOUTS SHALL BE THE SAME SIZE AND MATERIAL AS THE SANITARY SEWER PIPE.
5. UPON APPROVAL MANHOLES CAN BE SUBSTITUTED FOR CLEANOUTS WITH A MAXIMUM DISTANCE OF 300 FEET BETWEEN MANHOLES.
6. OPTION TWO MUST BE USED WHEN THERE IS NO UP STREAM CLEANOUT OR TERMINAL CLEANOUT.



Engineering Division

Typical Clean-out Details

Approved By
City Engineer
Kevin J. Slovarp

Adopted: 03/2004
Revised: 01/01/2023

STD - 521