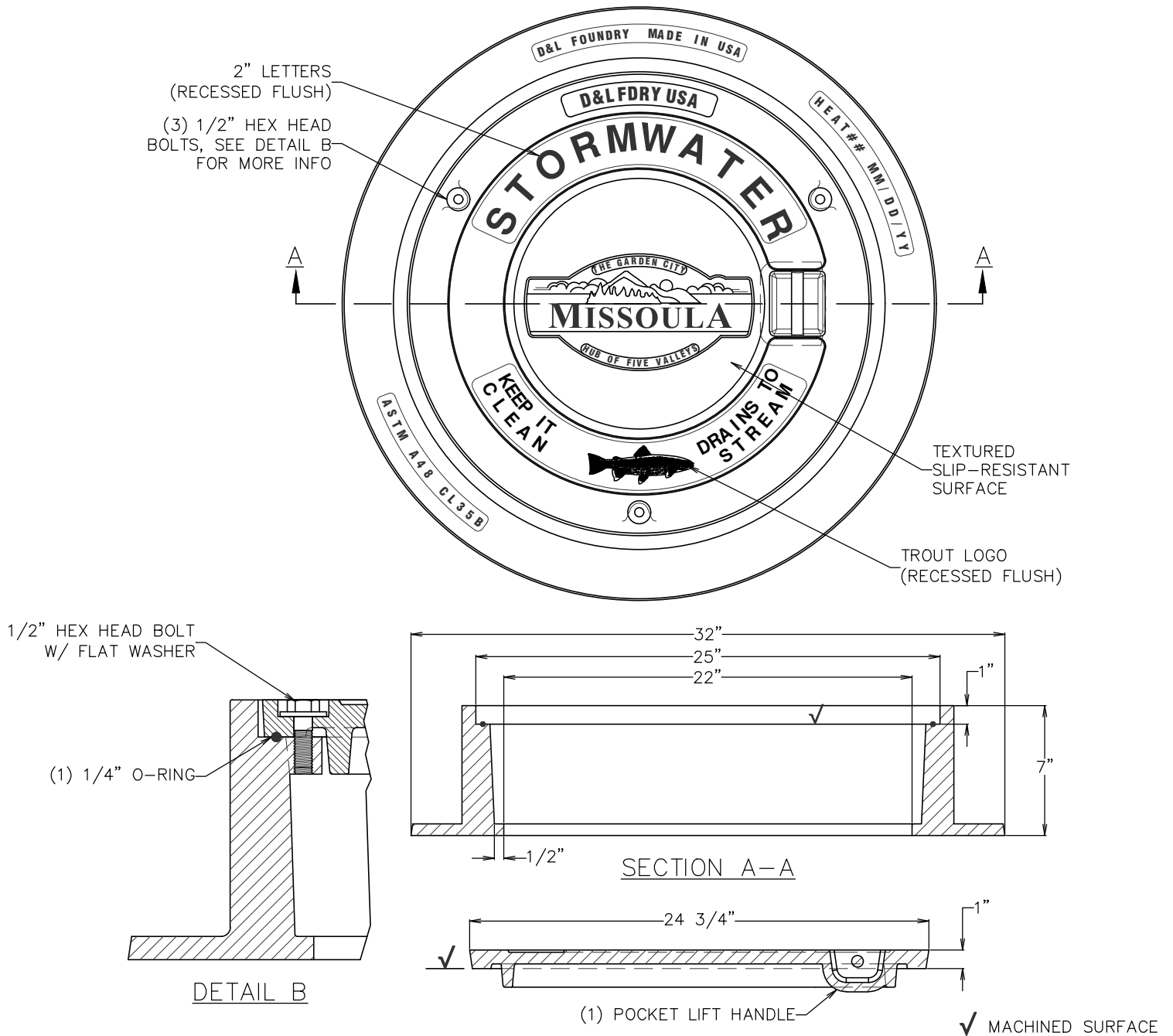


# EJCO 3777Z1/AGS, D&L A-1171 LOCKABLE OR APPROVED EQUIVALENT



### GENERAL NOTES:

1. CONSTRUCTION MATERIALS AND PROCEDURES SHALL COMPLY WITH MONTANA PUBLIC WORKS STANDARD SPECIFICATIONS (MPWSS), 7TH EDITION, APRIL 2021, AS MODIFIED BY THE MISSOULA CITY PUBLIC WORKS STANDARDS AND SPECIFICATIONS MANUAL, APPENDIX 2-A (STANDARD MODIFICATIONS TO MPWSS), CURRENT EDITION.
2. FOR USE WHEN THE MANHOLE CAN BECOME PRESSURIZED.
3. FOR CITY-OWNED INFRASTRUCTURE ONLY. FOR PRIVATE STRUCTURES WITHIN THE RIGHT-OF-WAY PROVIDE A TEXTURED SLIP RESISTANT LID WITHOUT CITY LOGO - MUST HAVE "STORMWATER" ON LID.
4. PROVIDE LIDS AND RINGS THAT MEET AASHTO 306 HS20 LOADING RATING OR HIGHER.
5. COMPOSITE TAPERED GRADE RINGS SHALL BE USED TO MATCH FRAME & GRATE TO THE CURB LINE CROSS SLOPE AND RUNNING SLOPE OR STREET CROSS SLOPE AND RUNNING SLOPE WHERE NOT IN CONCRETE.
6. 4-INCH MANHOLE RING MAY BE USED IN LIEU OF A 7" RING ONLY WITH PRIOR APPROVAL FROM CITY ENGINEERING.



Engineering Division

## Stormwater Lockable Lid and Frame

*AS*

Approved By  
Utility Engineer  
Andy Schultz, PE

Adopted: 09/28/2020  
Revised: 01/01/2023

**STD - 605**