

Oct. 17, 2022

Public Invited to Participate in Missoula Community JEDI Network Summit

The Missoula Community JEDI Network invites community members to participate in its inaugural summit, "Be the Change: Resilience Through Equity," slated for Thursday and Friday, Oct. 27-28, on the University of Montana campus. The summit will be an opportunity to collectively build community resilience through equity-minded approaches to challenging problems.

Hosted by the Missoula Community Justice, Equity, Diversity and Inclusion (JEDI) Network, this inaugural summit will bring together a wide range of organizations, city and county offices, neighborhoods, health and education leaders, and other groups. Summit participants will explore opportunities for creating a cohesive and holistic community approach to justice, equity, diversity and inclusion for all.

The public is invited to attend the free keynote event from 6:30 to 8 p.m. Thursday, Oct. 27, in the University Center Ballroom. This event will feature James Whitfield of Be Culture, an organization that helps boards, executives and civic leaders strategically mobilize people across their organizations and communities to effectively and sustainably develop the culture they seek. [Please RSVP online*](#) for this free public event. Attendance will be capped at 700 people.

On Oct. 28, organizations and individuals from across Missoula will gather for a day of working sessions. Organized around the ["Social Determinants of Health"](#) framework devised by the US Dept. of Health and Human Services, work sessions will challenge participants to share, align around and build upon ongoing efforts to create a more equitable and just community. Sessions are grouped into five themes: education and access, health, neighborhood and the built environment, social and community context, and economic stability.

An additional intensive session will focus on implicit bias training. The full schedule with course descriptions and presenters is online at <http://missoula.co/equity> and www.engagemissoula.com/jedi. [Registration*](#) for the Friday work sessions is open now, with attendance capped at 250 people. Registration fees are \$20 per person and are offered on a sliding scale to encourage participation.

The Missoula Community JEDI Network includes All Nations Health Center, the City of Missoula, the Missoula City-County Health Department, the Human Resource Council, Missoula County, Missoula County Public Schools, Partnership Health Center, University of Montana and the Western Montana LGBTQ+ Community Center. The JEDI Network is grateful for the support of lead sponsors, Clearwater Credit Union, DJ&A Engineering and Partnership Health Center, and the other generous sponsors that have helped make the summit possible.

**Please disregard the “New Student Success” heading on the registration pages. The links above are correct.*

Contacts for media interviews:

- James Whitfield, co-founder, Be Culture, jamesw@betheculture.com
- Skye McGinty, executive director, All Nations Health Center, smcginty@allnations.health
- D’Shane Barnett, director, Missoula City-County Health Department, dbarnett@missoulacounty.us
- Devin Carpenter, director, UM New Student Success, devin.carpenter@mso.umt.edu
- Becky Goodrich, communications specialist, Missoula Parks and Recreation, goodrichb@ci.missoula.mt.us
- Lisa Beczkiewicz, Health Promotion supervisor, Missoula City-County Health Department, lbeczkiewicz@missoulacounty.us

###

Attached:

- About the Missoula Community JEDI Network
- Keynote Address Announcement
- Summit Schedule
- James Whitfield Speaker Bio

Missoula Community JEDI Network

Who we are and why we exist
October 2022

The Community JEDI Network is a collective of educational leaders from the University of Montana and MCPS; leaders in health from Partnership Health Center, All Nations Health Center, and Missoula City-County Health Department; local government leaders from Missoula County and the City of Missoula; and leaders from numerous non-profits, neighborhoods, and individuals who have been engaged in and leading justice, equity, diversity, and inclusion work for some time.

The Network is an evolution and alignment of multiple initiatives including the City of Missoula's year-long technical support through the National League of Cities - Cities of Opportunity Cohort, and the City-County Interagency Equity Committee and partners' teams. This timeline represents some of the initiatives being woven into our community. We honor and want to hear about other JEDI initiatives to expand the network and to collectively advance the work.



Through the Network, we combine efforts, expand opportunities, and bring greater focus to meeting shared goals for JEDI throughout Missoula County. Our goals are to bring people, ideas, and existing initiatives together to align our work and create a cohesive and holistic approach to our ongoing work in justice, equity, diversity and inclusion.

We are committed to engaging residents who have previously not been included or not felt welcome to engage in community, government, and other institutions. All who want to support this effort are welcome. Regular meeting attendance is not required. Our work is just beginning, and we would love to have you join us!

Network Affiliates: Missoula City County Health Department; All Nations Health Center; Partnership Health Center; Missoula County; City of Missoula; University of Montana; Missoula County Public Schools; Human Resource Council; Headwaters Foundation; Missoula Economic Partnership; Missoula Aging Services; Empower Montana; The Center (WMLGBTQ+CC) ...and growing!

Meetings: 10 am to 12 pm, third Thursday of each month, at the Missoula City-County Health Department.

For more information please contact Donna Gaukler, Missoula Parks and Recreation, 406-552-6265, gauklerd@ci.missoula.mt.us; or Lisa Beczkiewicz, Missoula City-County Health Department, 406-258-3389, lbeczkiewicz@missoulacounty.us.

The Missoula Community Justice, Equity,
Diversity and Inclusion Network Presents the
2022 Summit

**OCTOBER 27: KEYNOTE ADDRESS WITH
BE CULTURE**

BE THE CHANGE: RESILIENCE THROUGH EQUITY



Be Culture helps boards, executives, and civic leaders strategically mobilize people across their organizations and/or communities to effectively and sustainably develop the culture they desire.

Join us for the keynote!

Who: James Whitfield, Be Culture

Where: University of Montana, UC Ballroom

When: Thursday, October 27, 6:30 - 8 p.m.

RSVP (event is free): tinyurl.com/JEDIkeynote



Missoula Community JEDI Network presents:

Be the Change: Resilience Through Equity Summit

Friday, October 28, 2022, 8 am – 5 pm • UM University Center

[Register today!](#)*

Thursday, October 27

6:30 pm Free public keynote address, [James Whitfield](#) of Be Culture, UC Ballroom [RSVP](#)

Friday, October 28

8 – 8:30 am Breakfast and registration

8:30 – 9 Welcome and opening
Samuel Akem, UM graduate and community member
Pardis Mahdavi, PhD, Provost and Executive Vice President, University of Montana
City of Missoula Mayor Jordan Hess

9 – 9:45 Keynote address: [James Whitfield](#), Be Culture

9:45 - 10 Break

10 - 11 **Educational Session 1**

11 – 11:15 Break

11:15 – 12:15 **Educational Session 2**

12:15 – 1:15 Lunch and Social Networking

1:15 – 1:45 Invest Health and JEDI Initiatives Across the Nation
Jennifer Fassbender, Reinvestment Fund
Clearwater Credit Union's commitment to JEDI, TBA

1:45 – 2:45 **Educational Session 3**

2:45 – 3 Break

3 – 4 **Educational Session 4**

4 – 5 pm What's Next, Missoula? Our Community's JEDI Plan
[James Whitfield](#), Be Culture
[Lisa Beczkiewicz](#), Missoula Public Health, and Missoula Invest Health

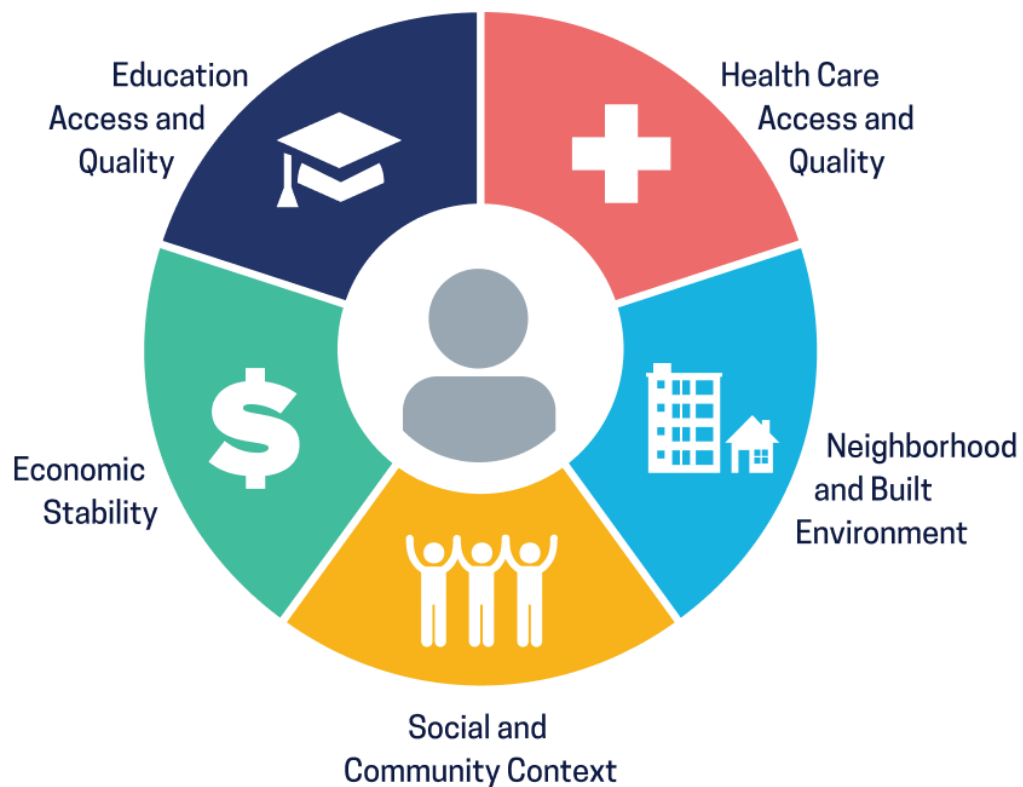
Many thanks to Summit Sponsors and JEDI Network Members



*Please disregard the "New Student Success" heading on the registration pages. The links above are correct.

Missoula Community JEDI Network presents:

Be the Change: Resilience Through Equity Summit



Educational Sessions: Social Determinants of Health

10 - 11 am Session Block 1*

TITLE	PRESENTERS	**SDOH	ROOM #
IVALUE Equity And Inclusion In Missoula County Public Schools	Dacia Griego	Education Access/Quality	UC 330/31
Importance Of Cultural Understanding In Indigenous Healthcare	Amber Shaffer Skye McGinty	Health Care Access/Quality	UC 326/27
Working For A Healthy, Just, And Resilient Missoula	Caroline Bean	Neighborhood/Built Environment	UC Theatre
Welcome Back "Opening Doors for Returning Citizens"	Benny Lacayo	Social/Community Context	UC 332/33
Part 1: When Our Children Thrive, Our Community Thrives: Inspiring Collective Action Through A Community Fellows Initiative	Allison Wilson Grace Decker	Economic Stability	UC 225
Part 1: Navigating The Genderverse	TransVisible	Intensive	UC Ballroom

*Draft schedule – Final Schedule posted 10/21/22 [here](#). Please check final schedule before attending. **Social Determinants of Health

Missoula Community JEDI Network presents:

Be the Change: Resilience Through Equity Summit

11:15 am – 12:15 pm Session Block 2*

TITLE	PRESENTERS	**SDOH	ROOM #
Linguistic Diversity: What It Is, Why It Matters, And How We Can Respect, Protect, And Celebrate It	Leora Bar-el	Education Access/Quality	UC 330/31
Building Safety And Compassion Through Collaboration: The Missoula County Perinatal	Anna Semple Sarah Garber Stephanie Morton	Health Care Access/Quality	UC 326/27
Equity Is The Strategic Plan	Barbara Frank	Neighborhood/Built Environment	UC Theatre
Perspectives On Aging And Ageism	Lisa Sheppard Lanette Perkins Marion Yates	Social/Community Context	UC 332/33
Part 2: When Our Children Thrive, Our Community Thrives: Inspiring Collective Action Through A Community Fellows Initiative	Allison Wilson Grace Decker	Economic Stability	UC 225
Part 2: Navigating The Genderverse	TransVisible	Intensive	UC Ballroom

*Draft schedule – Final Schedule posted 10/21/22 [here](#). Please check final schedule before attending. **Social Determinants of Health

SPECIAL SESSION

1:15 – 1:45

Invest Health and JEDI Initiatives Across the Nation
Jennifer Fassbender, Reinvestment Fund
Clearwater Credit Union's commitment to JEDI, TBA

1:45 – 2:45 pm Session Block 3*

TITLE	PRESENTERS	**SDOH	ROOM #
Understanding And Fostering Language And Literacy Development in Missoula	Kate Brayko	Education Access/Quality	UC 330/31
Case Management For Basic Needs On The College Campus	Kat Cowley	Health Care Access/Quality	UC 326/27
Anti-racism Auditing: Methods, Pitfalls, And Possibilities	Tobin Shearer	Neighborhood/Built Environment	UC 332/33
Missoula Works - Building An Inclusive Economy Through Work	Paige Pavalone	Social/Community Context	UC 225
Part 1: Homeownership In A Housing Crisis	Heather Harp	Economic Stability	UC Theatre
Part 1: Implicit Bias Training	Brooke Corr	Intensive	UC Ballroom

*Draft schedule – Final Schedule posted 10/21/22 [here](#). Please check final schedule before attending. **Social Determinants of Health

Missoula Community JEDI Network presents:

Be the Change: Resilience Through Equity Summit

3 – 4 pm Session Block 4*

TITLE	PRESENTERS	**SDOH	ROOM #
Wrestling With The Truth Of Colonization: Reflections	Amber Shaffer	Education Access/Quality	UC 330/31
Beyond the Patient Visit: Improving Health Care Equity with Data and Patient Voices	Becca Goe Zak Clare-Salzler	Health Care Access/Quality	UC 326/27
A Multifaceted Approach To Gaming, Education, and Building Community	Michael Cassens	Neighborhood/Built Environment	UC 332/33
Lessons From The Field	Robert Farmer	Social/Community Context	UC 225
Part 2: Homeownership In A Housing Crisis	Heather Harp	Economic Stability	UC Theatre
Part 2: Implicit Bias Training	Brooke Corr	Intensive	UC Ballroom

*Draft schedule – Final Schedule posted 10/21/22 [here](#). Please check final schedule before attending. **Social Determinants of Health

SUMMIT CLOSING

4 – 5 pm

What's Next, Missoula? Our Community's JEDI Plan

James Whitfield, Be Culture

Lisa Beczkiewicz, Missoula Public Health, and Missoula Invest Health



Short Bio for Introductions:

One word to describe James is multi-disciplinary. His executive experience spans business, non-profits, and the corporate sector. He is a professional speaker, writer, and executive coach drawing insights from the worlds of management, sociology, psychology, and anthropology among other disciplines. He focuses all of these through the lens of Adaptive Leadership, about which he co-developed a Masters Degree for Executive and Civic Leaders. However, he credits his greatest achievements as his 30-year marriage to Kristen Whitfield, his college sweetheart and current business partner, and their two amazing adult children who are making their own dents in the universe.



James Whitfield

Extended Bio:

James employs a decidedly multi-disciplinary approach resulting from broad-based experience as an executive in business, non-profit, and government, including having been appointed by the White House to oversee the U.S. Department of Health and Human Services. In his dual role as the Regional Director for the Pacific Northwest and a Deputy in the Office of the Secretary, he split his time between Seattle and D.C and managing staff across the nation.

James has also held positions on numerous local, statewide, and national boards of directors – including the founding board for Leadership Eastside where he subsequently served as CEO for approximately ten years and helped develop a Masters Degree in Executive and Civic Leadership.

James has studied health care policy at Harvard; is the author of the hospital patient guide, “Just What the Patient Ordered”; and is co-founder of Nourishing Networks, a local all-volunteer anti-hunger movement. He has received numerous accolades for his public speaking, training, and civic engagement work.

James has been married to his wife and business partner, Kristen Whitfield, since 1992. They have two adult children together who are their undisputed pride and joy.

James and Kristen are currently co-authoring a book about the Be Culture framework and process.