





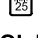



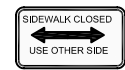


-  TYPE III BARRICADE
-  TYPE II BARRICADE
-  TYPE I BARRICADES

-  WARNING SIGNS
-  DETOUR SIGNS
-  DETOUR ROUTING
-  REGULATORY SIGNS

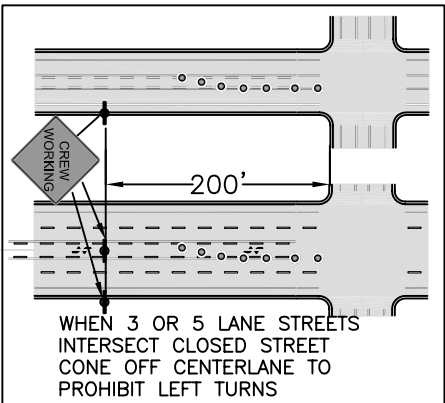
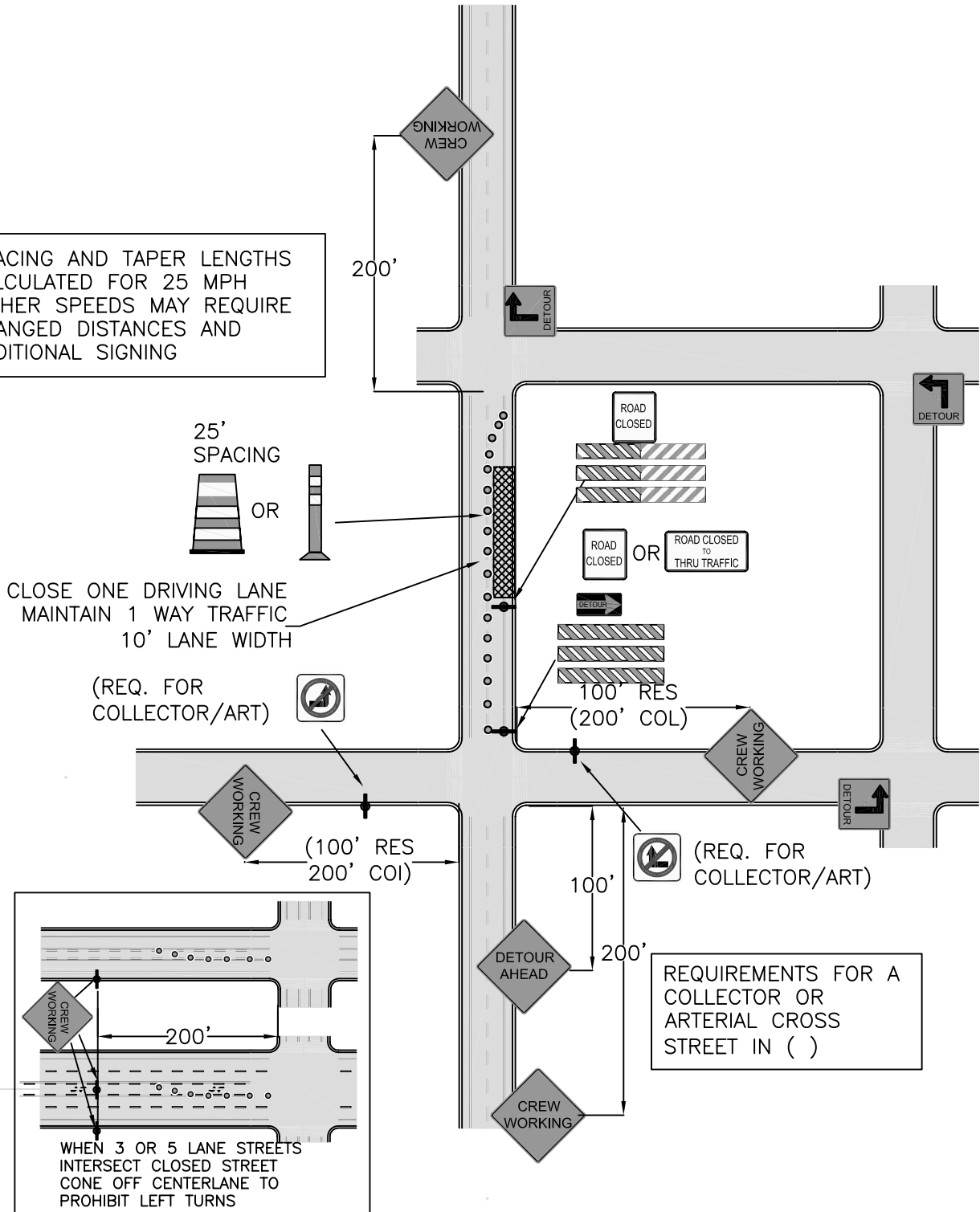
-  DELINEATORS
-  SIGN LOCATION SYMBOL
-  WORK ZONE



SIDEWALK CLOSED  
MUST BE USED  
WHENEVER A CITY  
SIDEWALK IS TO BE  
CLOSED

TRAFFIC CONTROL MUST CONFORM TO THE MANUAL ON UNIFORM TRAFFIC CONTROL DEVICES (MUTCO)

SPACING AND TAPER LENGTHS  
CALCULATED FOR 25 MPH  
HIGHER SPEEDS MAY REQUIRE  
CHANGED DISTANCES AND  
ADDITIONAL SIGNING



Digital Standard Drawings and other maps are available on the City website: [http://www.ci.missoula.mt.us/publicworks/gis\\_maps.htm](http://www.ci.missoula.mt.us/publicworks/gis_maps.htm)



# TYPICAL TRAFFIC CONTROL PLAN

STREET CLASSIFICATION:  
2 LANE COLLECTOR  
CLOSE ONE DRIVING LANE

Revision Date:  
03/2004

**TC - 205**