












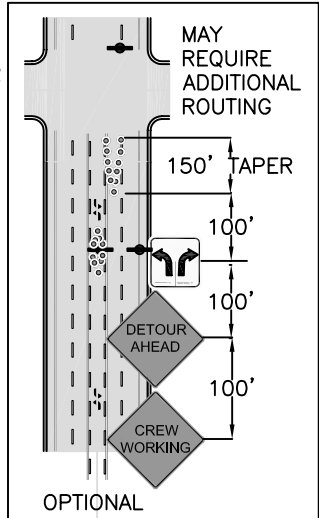
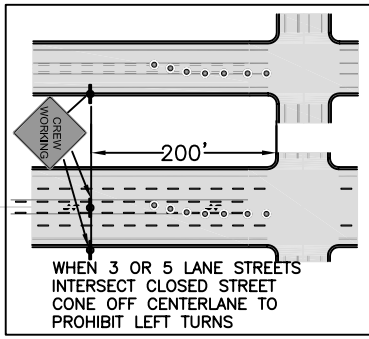
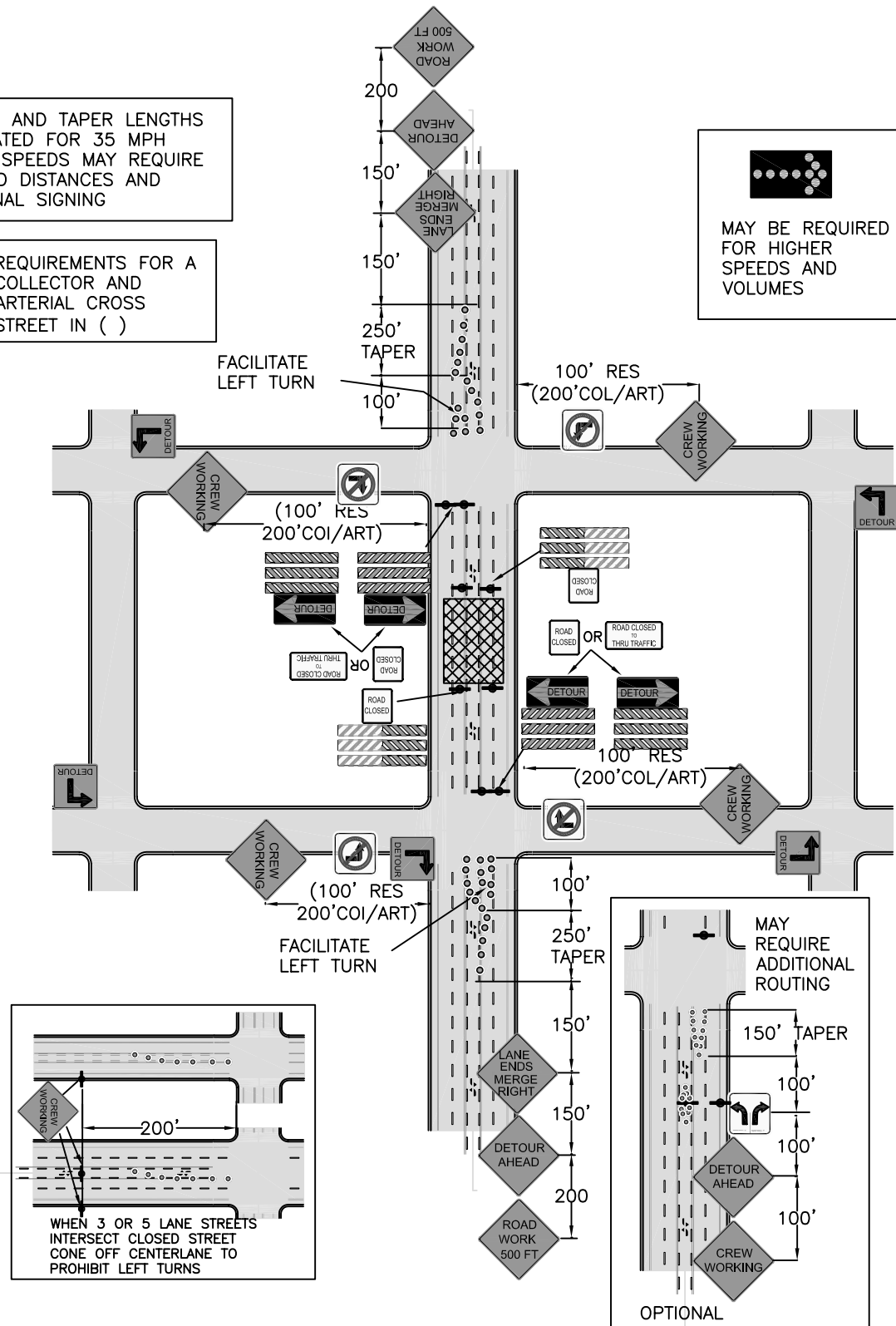
-  TYPE III BARRICADE
-  TYPE II BARRICADE
-  TYPE I BARRICADES
-  WARNING SIGNS
-  DETOUR SIGNS
-  DETOUR ROUTING
-  REGULATORY SIGNS
-  DELINEATORS
-  SIGN LOCATION SYMBOL
-  WORK ZONE
-  SIDEWALK CLOSED
MUST BE USED WHENEVER A CITY SIDEWALK IS TO BE CLOSED

TRAFFIC CONTROL MUST CONFORM TO THE MANUAL ON UNIFORM TRAFFIC CONTROL DEVICES (MUTCO)

SPACING AND TAPER LENGTHS CALCULATED FOR 35 MPH
HIGHER SPEEDS MAY REQUIRE CHANGED DISTANCES AND ADDITIONAL SIGNING

REQUIREMENTS FOR A COLLECTOR AND ARTERIAL CROSS STREET IN ()

MAY BE REQUIRED FOR HIGHER SPEEDS AND VOLUMES



Digital Standard Drawings and other maps are available on the City website: http://www.ci.missoula.mt.us/publicworks/gis_maps.htm



TYPICAL TRAFFIC CONTROL PLAN

STREET CLASSIFICATION:
5 LANE ARTERIAL
CLOSE STREET

Revision Date:
03/2004

TC - 507