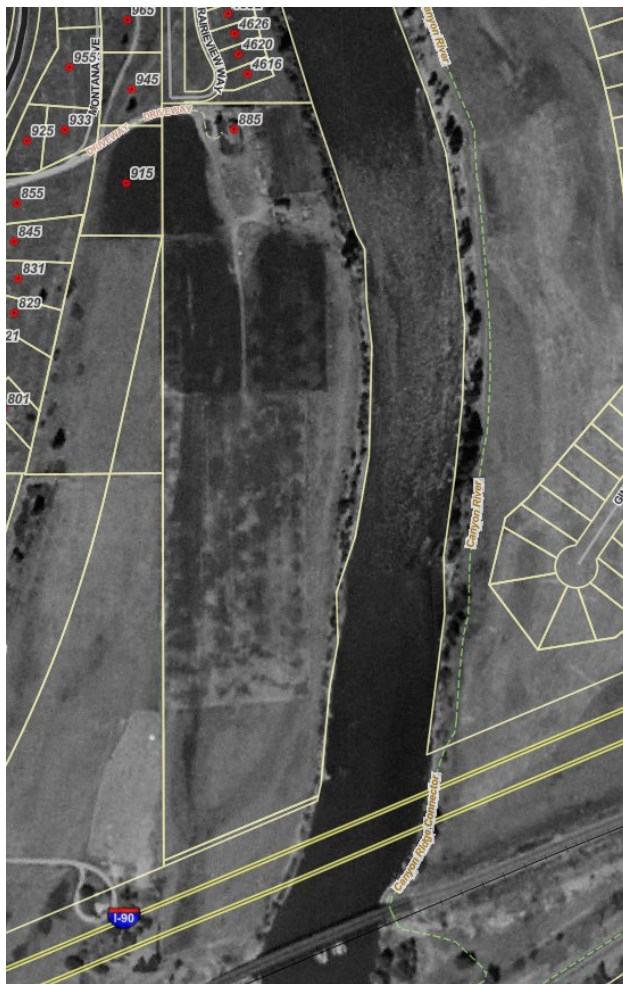
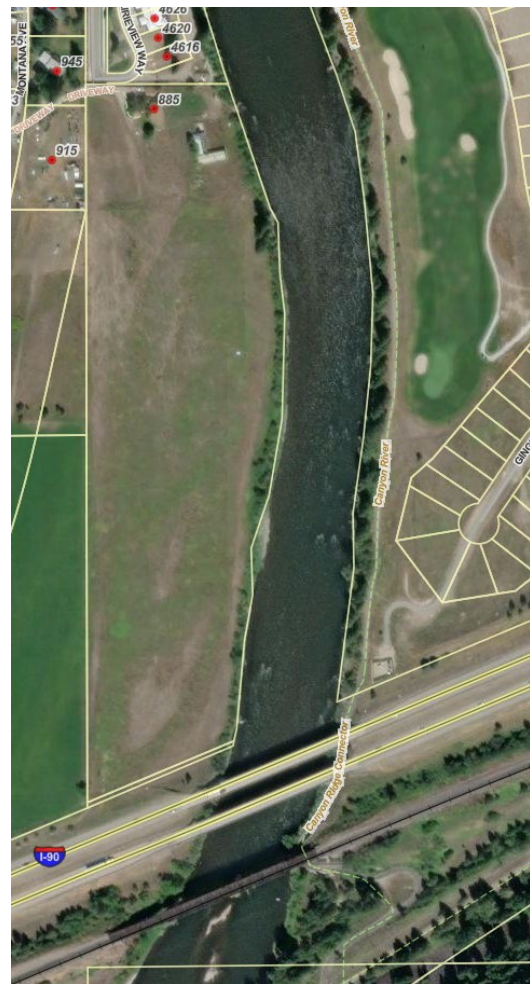


## Additional Information regarding the Missoula County Channel Migration Study

A recent study funded by the Missoula City-County Health department looked at the migration of the Clark Fork and Bitterroot Rivers through Missoula County. This study looked at large reach sections of each river (10 for the Clark Fork and 2 for the Bitterroot) to help determine a 75<sup>th</sup> percentile bank erosion extend for each section. Only areas with at least 30' of bank erosion since 1955 were put into the calculation. Aspire Subdivision sits within Reach 05 which starts at the Blackfoot river and runs to the Missoula wastewater plant. Measurable erosion (over 30') has occurred at (4) locations throughout this 9.9-mile stretch. From these measurements a 303' Erosion Hazard Area (EHA) buffer was applied to this reach. Due to the broad overlay for such a long stretch of river the report encourages individual site investigations. This development and property are one of those examples of individual site investigation versus a broad reach application for potential erosion hazard. Below are two photos showing no river movement since 1955 for this area:



*Aerial from 1955*



*Aerial from 2022*

As seen in the photos, little to no bank erosion has occurred in the past 68 years through this individual stretch of river. This is highly likely due to a few areas pointed out within the CMZ study.

- First would be the position of this relatively straight stretch of river between two close bridges. Deer Creek Road and I-90 and the railroad bridge. These bridges confine the river to a locked position, not allowing for lateral movement as it passes under them.
- Also, a relatively stable bank with active vegetation and a mature (non-floodplain) terrace material is present on both sides of the river in this section. This allows for a much slower erosion rate if any at all.

These site-specific conditions show that even though there is an EHA for the 9.9-mile reach of 303 feet, the bank erosion hazard at this location is very minimal to none. As an extra sense of caution the project is establishing a 50' buffer from the river to any property boundary and then another 10' set back to any buildings to provide a minimum of 60' of set back should any unpredicted erosion occur. Also, the project is proposing no work along the erosion line of the river as to not disturb the currently working natural armament of the bank.