



LEGEND		
	PHASE 2	
	PHASE 3	
	PHASE 4	
	PHASE 5	
	PHASE 6	
	PHASE 7	
	ZONE 1 BOUNDARY	
	ZONE 2 BOUNDARY	

SANITARY SEWER REQUIREMENTS		
PHASE	QUANTITY	DESCRIPTION
2	851 LF	8" SANITARY SEWER LINE (WITH MANHOLES)
3	4535 LF	8" SANITARY SEWER LINE (WITH MANHOLES)
4	3405 LF	8" SANITARY SEWER LINE (WITH MANHOLES)
5	1005 LF	8" SANITARY SEWER LINE (WITH MANHOLES)
6	1001 LF	8" SANITARY SEWER LINE (WITH MANHOLES)
7	1192 LF	8" SANITARY SEWER LINE (WITH MANHOLES)
NOTES: ALL SANITARY SEWER LINES ARE TO BE 8" PVC SDR 35		

SANITARY SEWER SYSTEM REQUIREMENTS PER PHASE

Phase 1:
The Multi-Family development has been designed to sanitary wastewater from the Multi-Family to an existing sanitary sewer system on the west side of Hillview Way at Clearview. This connection will be utilized for Phase 1 and Phase 2. The new sanitary sewer line will be 8" PVC and will be set at a minimum slope of 0.40%.

Phase 2:
This phase contains 21 Townhouses. A stub out from the Multi-Family was provided to allow this portion of the subdivision to connect to and utilize the sanitary sewer line constructed in Phase 1.

Phase 3:
Phase 3 will require construction of a sanitary sewer main line extension north along Hillview Way connecting to the current top of current sanitary sewer system manhole. This connection is approximately 300' north of the northernmost corner of the project parcel, and approximately 1200' north of the Sanitary Sewer Line located in Local A. The line will convey wastewater from the entirety of the single family residential and sub outs for future development to the east.

Sanitary sewer services will be installed to each lot at approximately 10' from the property line on the low side of the site.

Phase 4:
Lots within Phase 4 will drain to the main line in Phase 3. Sanitary sewer services will be installed to each lot at approximately 10' from the property line on the low side of the site.

Phase 5:
Lots within Phase 4 (as well as stub out for future phases) will drain to the main line in Phase 3. Sanitary sewer services will be installed to each lot at approximately 10' from the property line on the low side of the site.

Phase 6:
Lots within Phase 6 (as well as stub out for future phases) will drain to the main line in Phase 3. Sanitary sewer services will be installed to each lot at approximately 10' from the property line on the low side of the site.

Phase 7:
Lots within Phase 7 (as well as stub out for future phases) will drain to the main line in Phase 6. Sanitary sewer services will be installed to each lot at approximately 10' from the property line on the low side of the site.

Cushing Terrell

cushingterrell.com
800.757.9522

MISSOULA, MONTANA
WILDROOT

NOT FOR CONSTRUCTION - EXHIBIT

© 2024 | ALL RIGHTS RESERVED

PRELIMINARY PLAT

05.10.2024
DRAWN BY | MASCIA
CHECKED BY |
REVISIONS

OVERALL SANITARY
SEWER PLAN

X300



MISSOULA, MONTANA
WILDROOT

NOT FOR CONSTRUCTION - EXHIBIT

© 2024 | ALL RIGHTS RESERVED

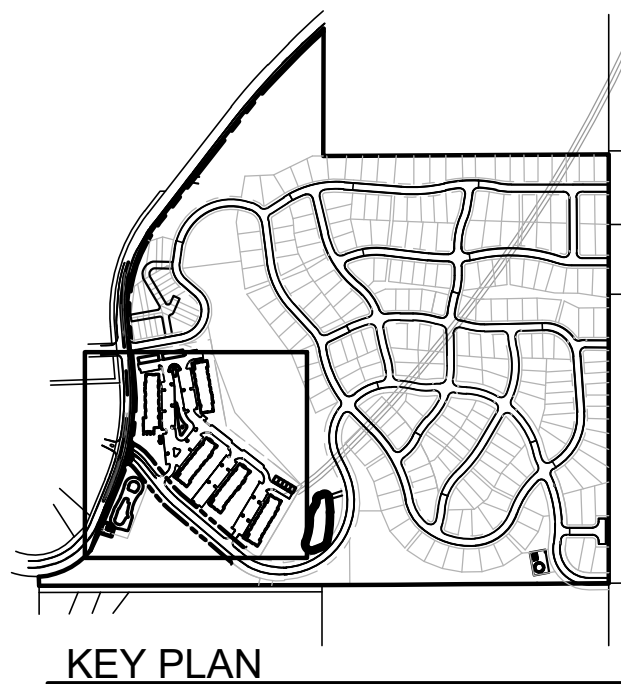
PRELIMINARY PLAT

05.10.2024
DRAWN BY | MASCIA
CHECKED BY |
REVISIONS

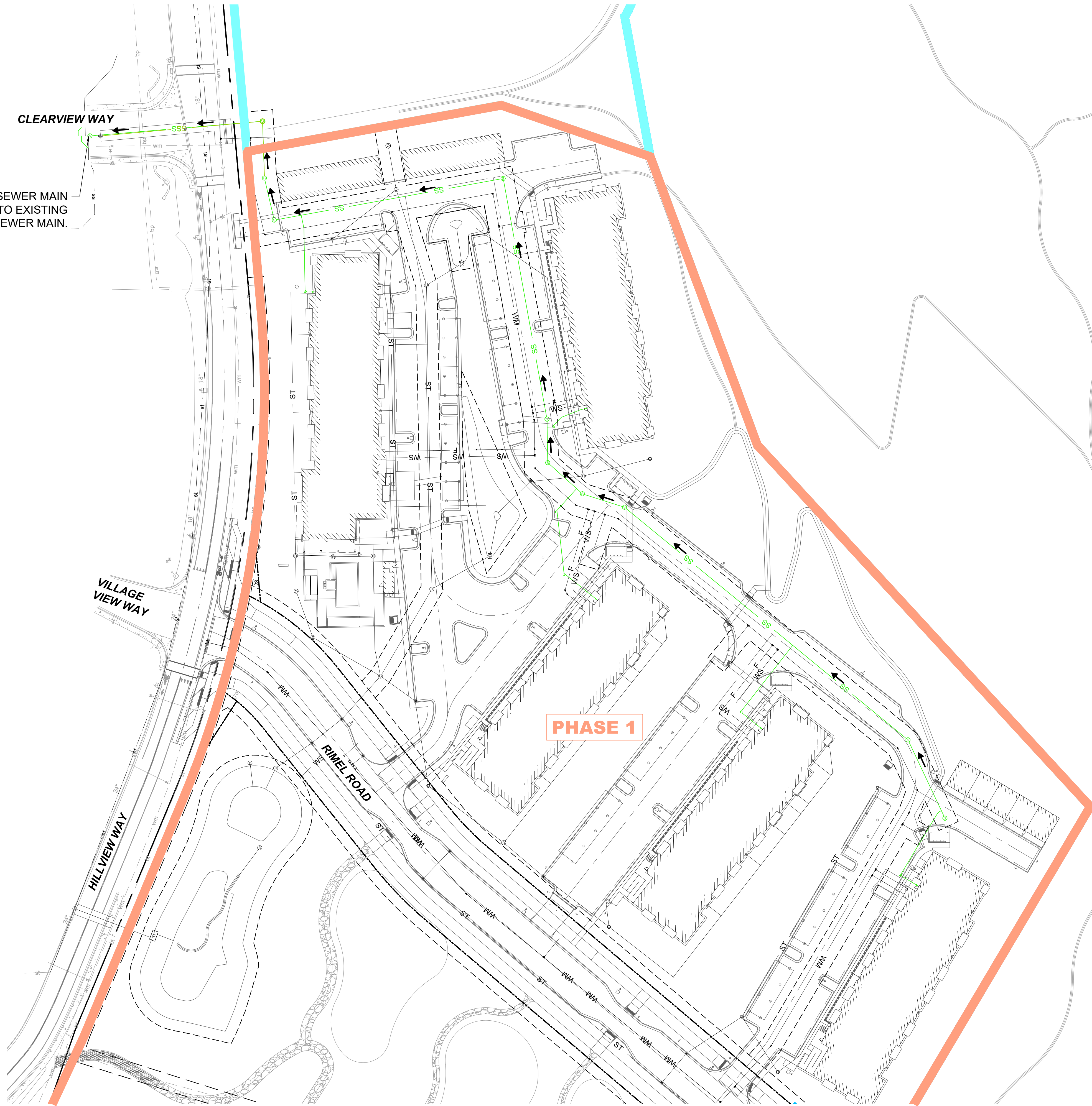
OVERALL UTILITY PLAN -
SANITARY SEWER

X301

NOT FOR CONSTRUCTION - EXHIBIT

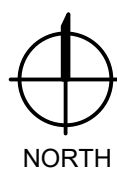


KEY PLAN



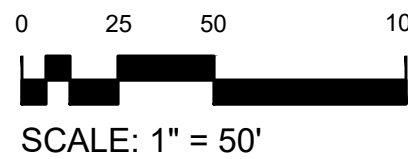
PHASE 1 SANITARY SEWER MAIN
CONNECTION TO EXISTING
SANITARY SEWER MAIN.

PHASE 1



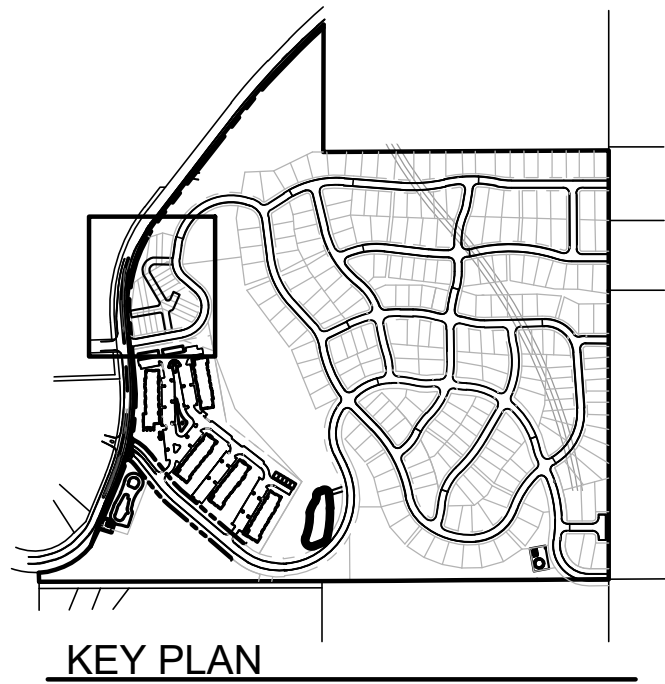
1
X302

PHASE 1 SANITARY SEWER EXHIBIT

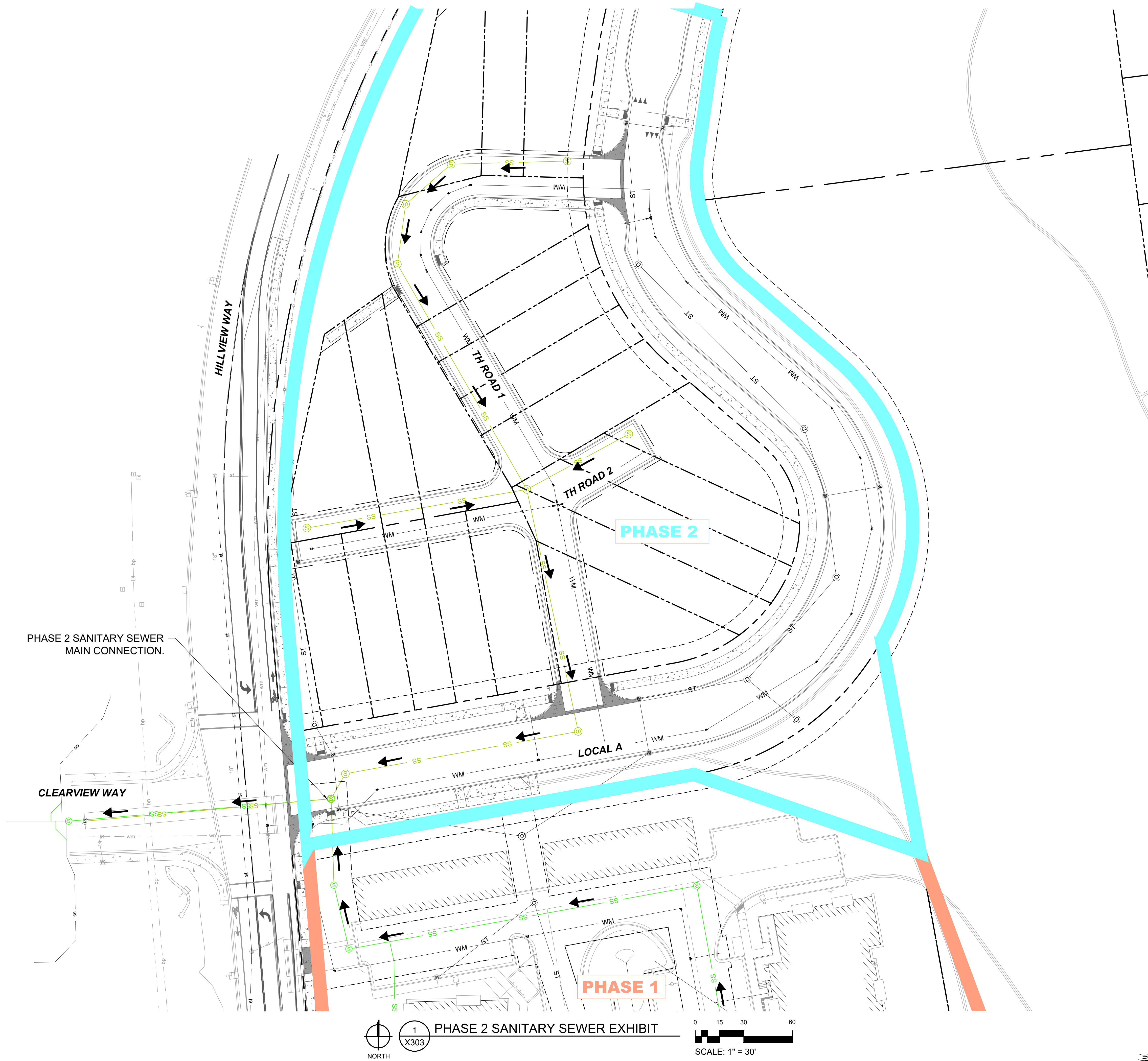


SCALE: 1" = 50'

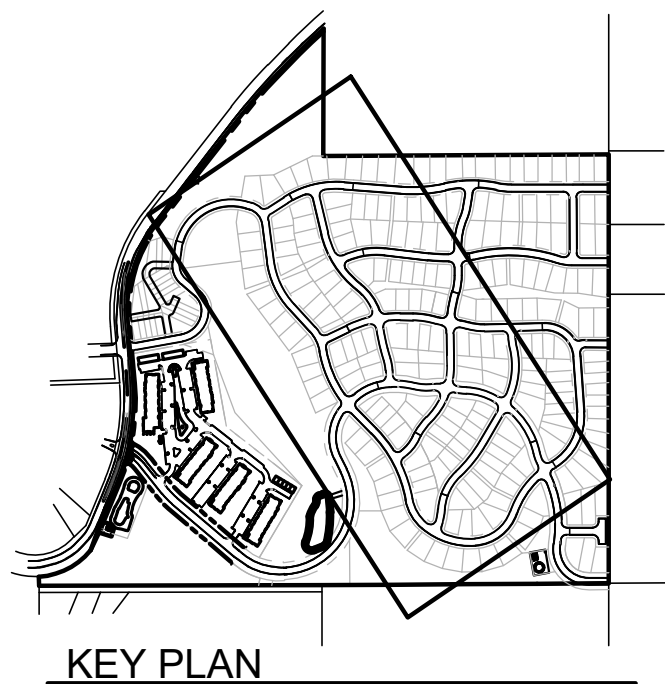
NOT FOR CONSTRUCTION - EXHIBIT



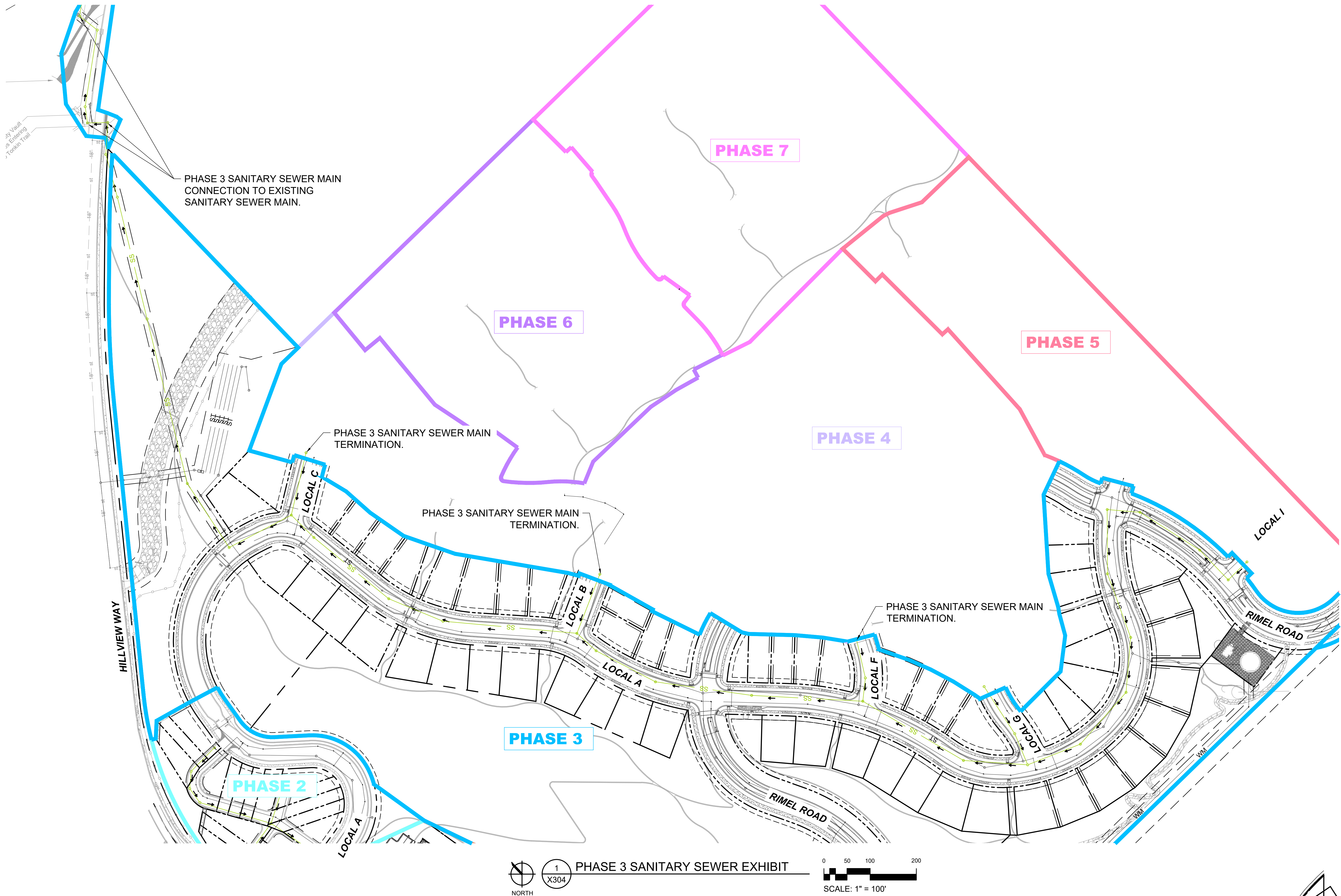
KEY PLAN

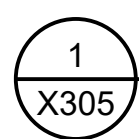
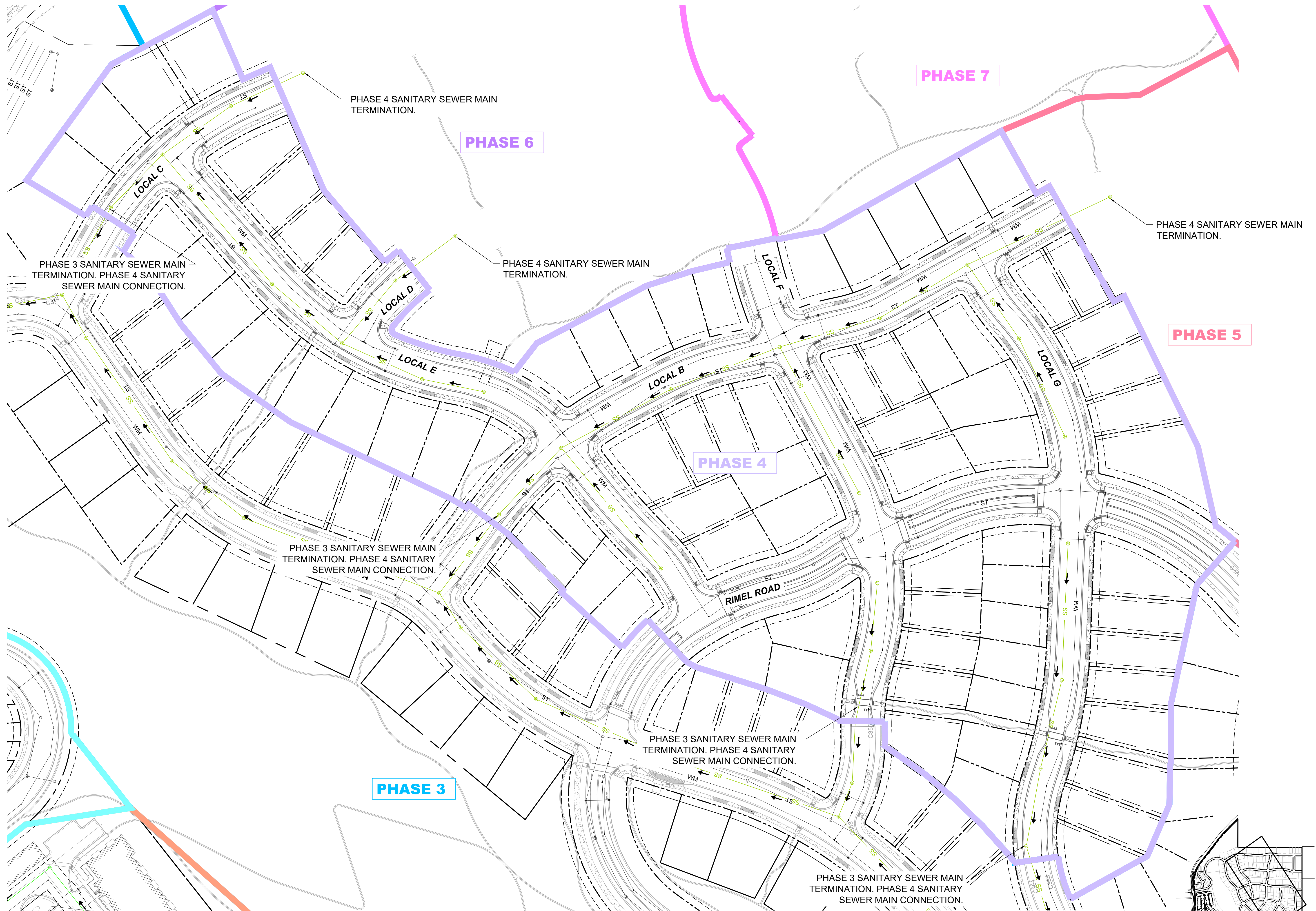


NOT FOR CONSTRUCTION - EXHIBIT



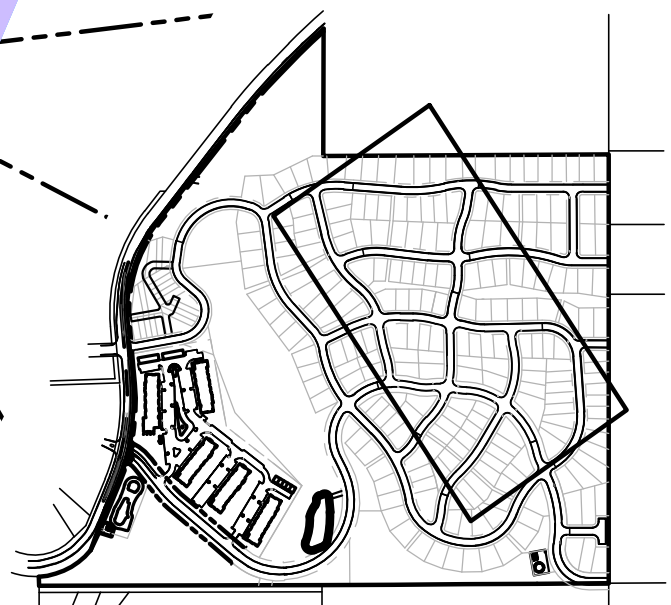
KEY PLAN





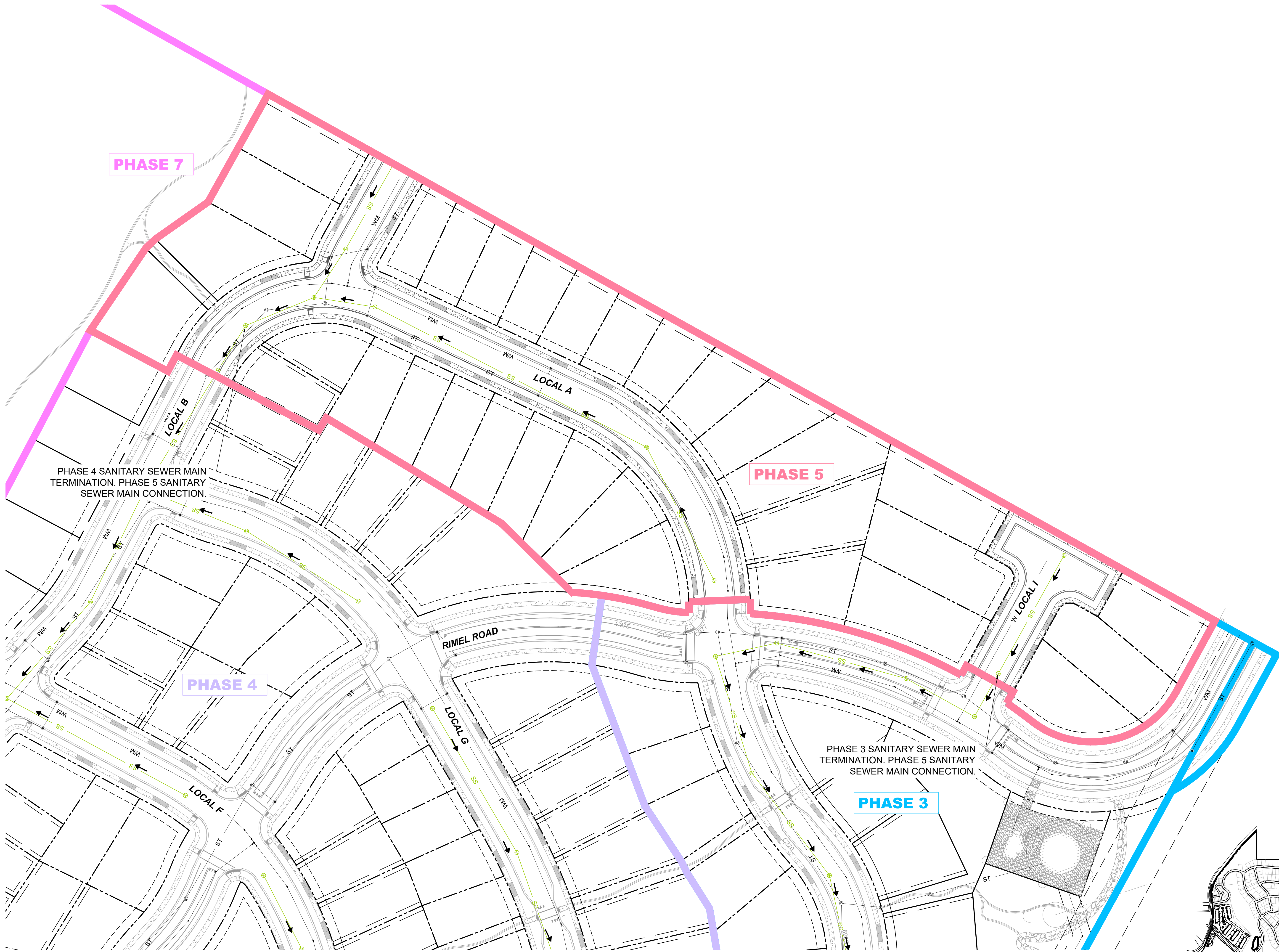
PHASE 4 SANITARY SEWER EXHIBIT

SCALE: 1" = 60'



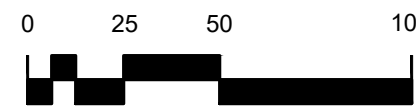
KEY PLAN

NOT FOR CONSTRUCTION - EXHIBIT

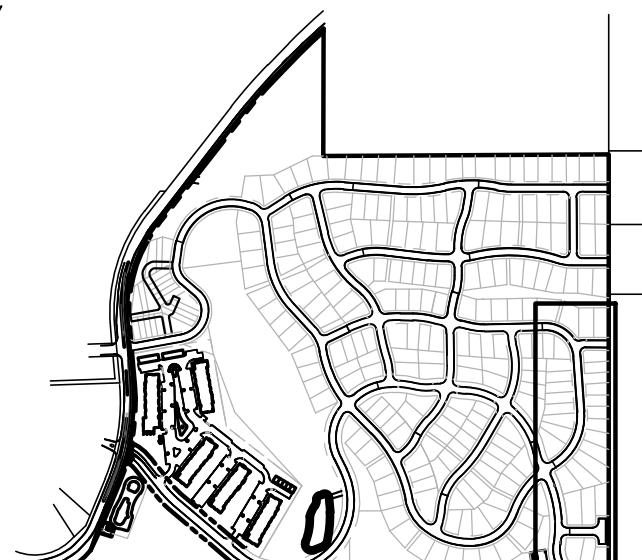


1
X306

PHASE 5 SANITARY SEWER EXHIBIT

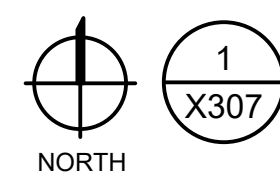
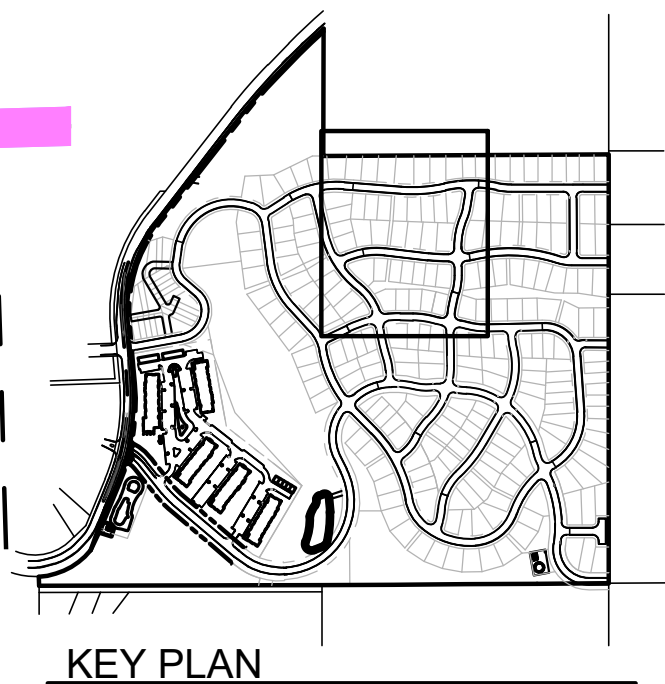
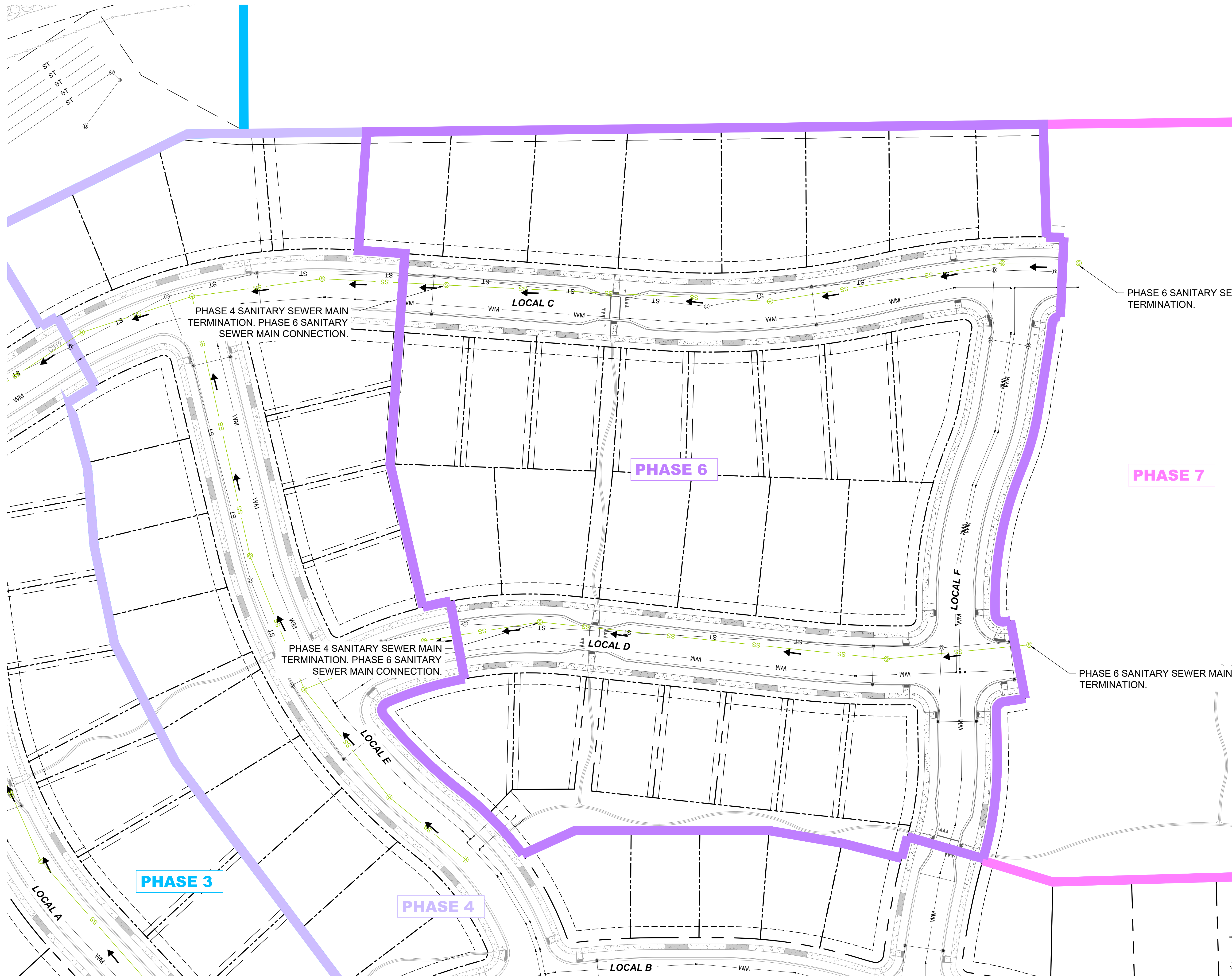


SCALE: 1" = 50'

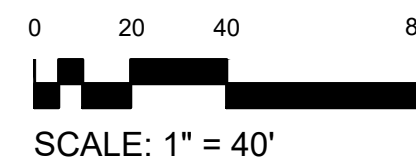


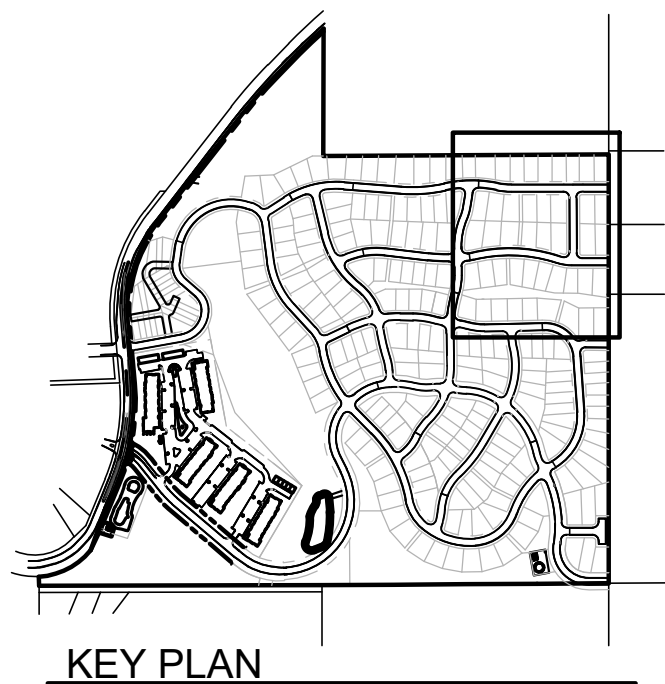
KEY PLAN

NOT FOR CONSTRUCTION - EXHIBIT

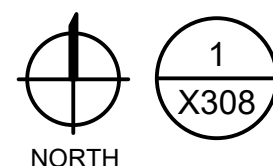
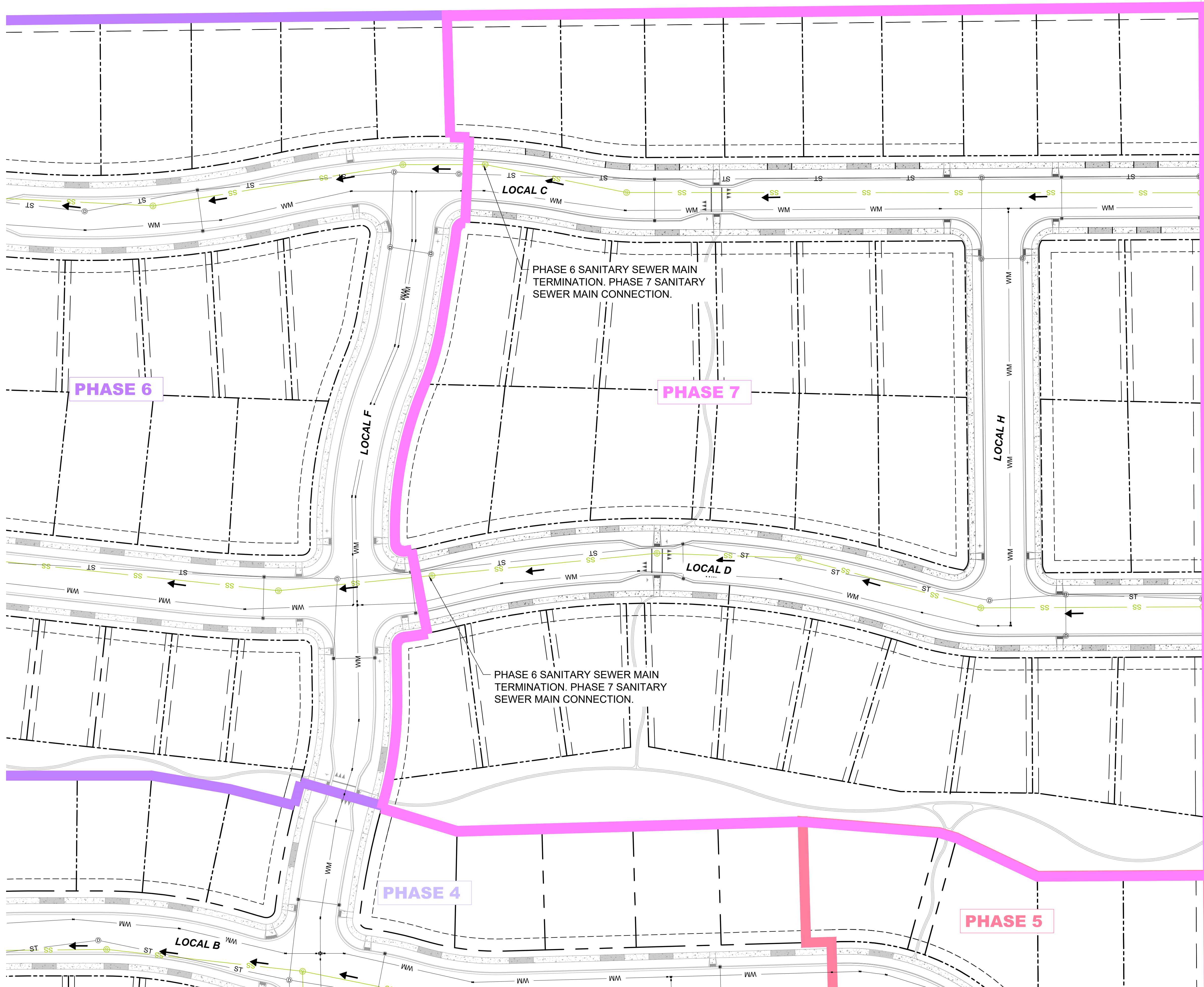


PHASE 6 SANITARY SEWER EXHIBIT

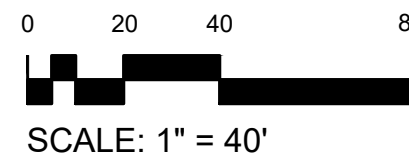




KEY PLAN



1
X308
PHASE 7 SANITARY SEWER EXHIBIT



SCALE: 1" = 40'