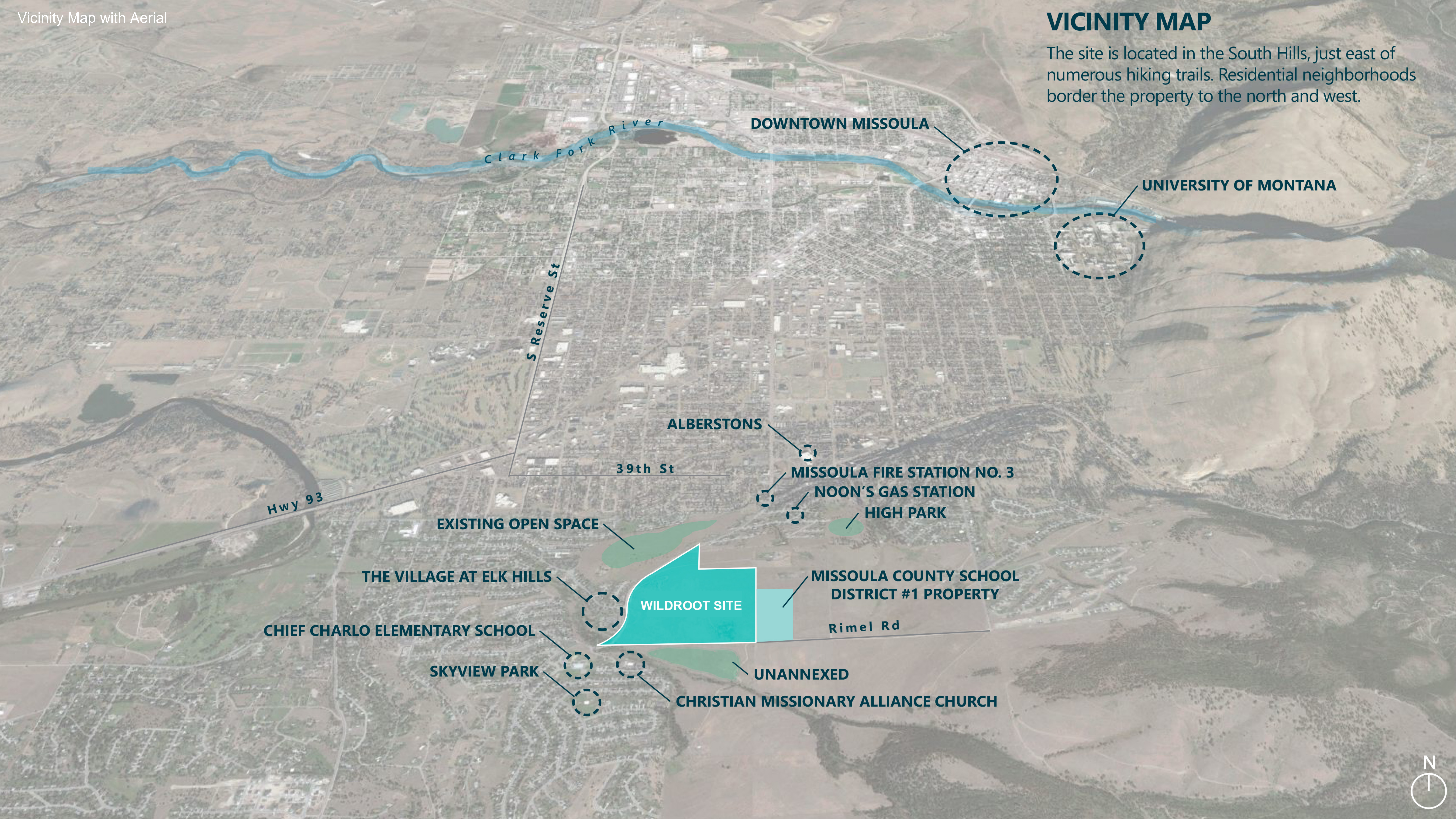


VICINITY MAP

The site is located in the South Hills, just east of numerous hiking trails. Residential neighborhoods border the property to the north and west.



Clark Fork River

DOWNTOWN MISSOULA

UNIVERSITY OF MONTANA

S Reserve St

ALBERSTONS

39th St

Hwy 93

MISSOULA FIRE STATION NO. 3

NOON'S GAS STATION

HIGH PARK

EXISTING OPEN SPACE

THE VILLAGE AT ELK HILLS

WILDROOT SITE

MISSOULA COUNTY SCHOOL DISTRICT #1 PROPERTY

Rimel Rd

CHIEF CHARLO ELEMENTARY SCHOOL

SKYVIEW PARK

UNANNEXED

CHRISTIAN MISSIONARY ALLIANCE CHURCH

