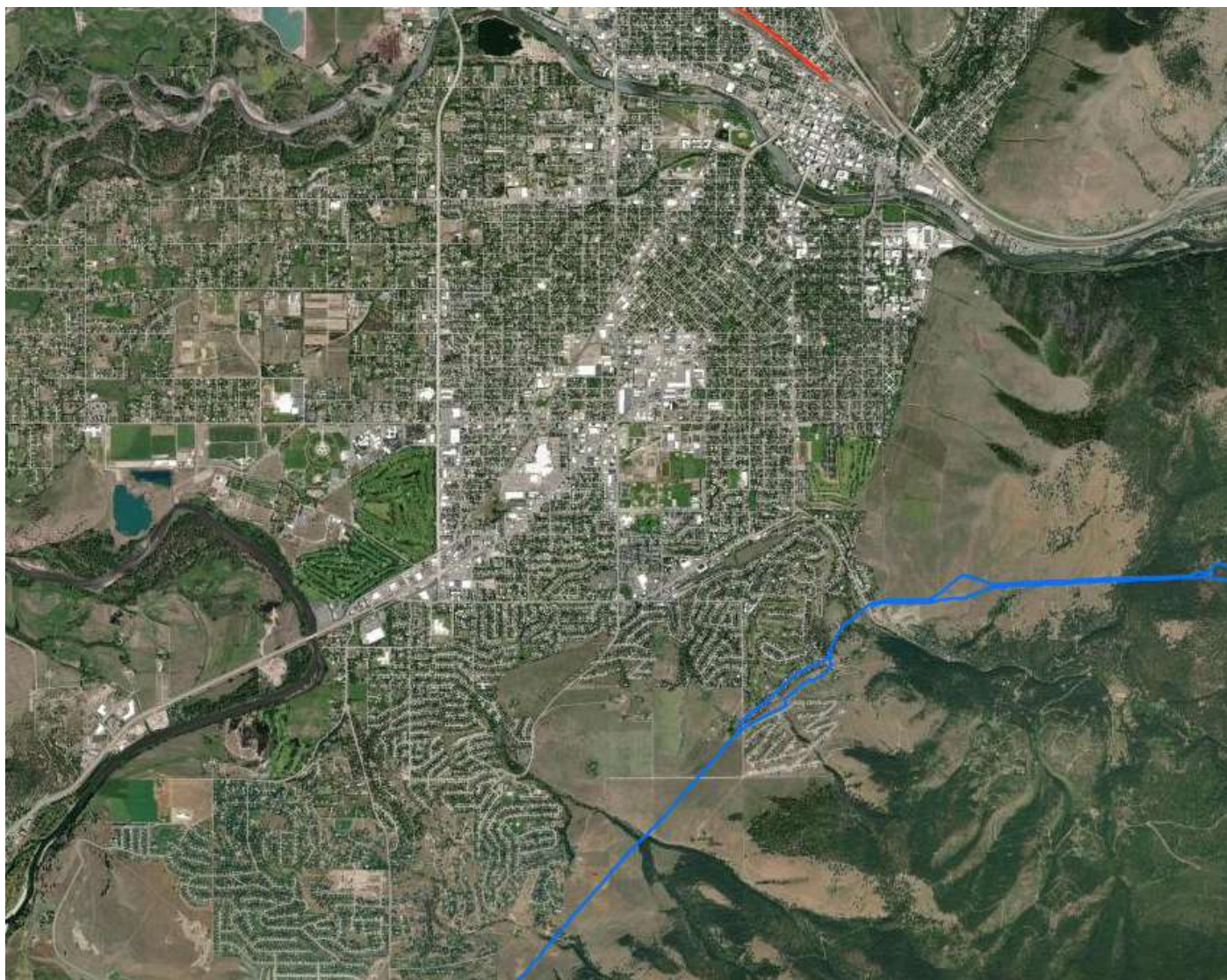






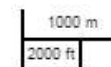


# NATIONAL PIPELINE MAPPING SYSTEM



## Legend

-  Accidents (Liquid)
-  Incidents (Gas)
-  Gas Transmission Pipelines
-  Hazardous Liquid Pipelines
-  LNG Plants
-  Breakout Tanks



Pipelines depicted on this map represent gas transmission and hazardous liquid lines only. Gas gathering and gas distribution systems are not represented.

**This map should never be used as a substitute for contacting a one-call center prior to excavation activities. Please call 811 before any digging occurs.**

Questions regarding this map or its contents can be directed to [npms@dot.gov](mailto:npms@dot.gov).

Projection: Geographic

Datum: NAD83

Map produced by the Public Viewer application at [www.npms.phmsa.dot.gov](http://www.npms.phmsa.dot.gov)

Basemap image is the intellectual property of Esri and is used herein under license. Copyright © 2020 Esri and its licensors. All rights reserved. World Imagery map service data is attributed to Esri, Maxar, Earthstar Geographics, and the GIS User Community.

Date Printed: Aug 04, 2023

