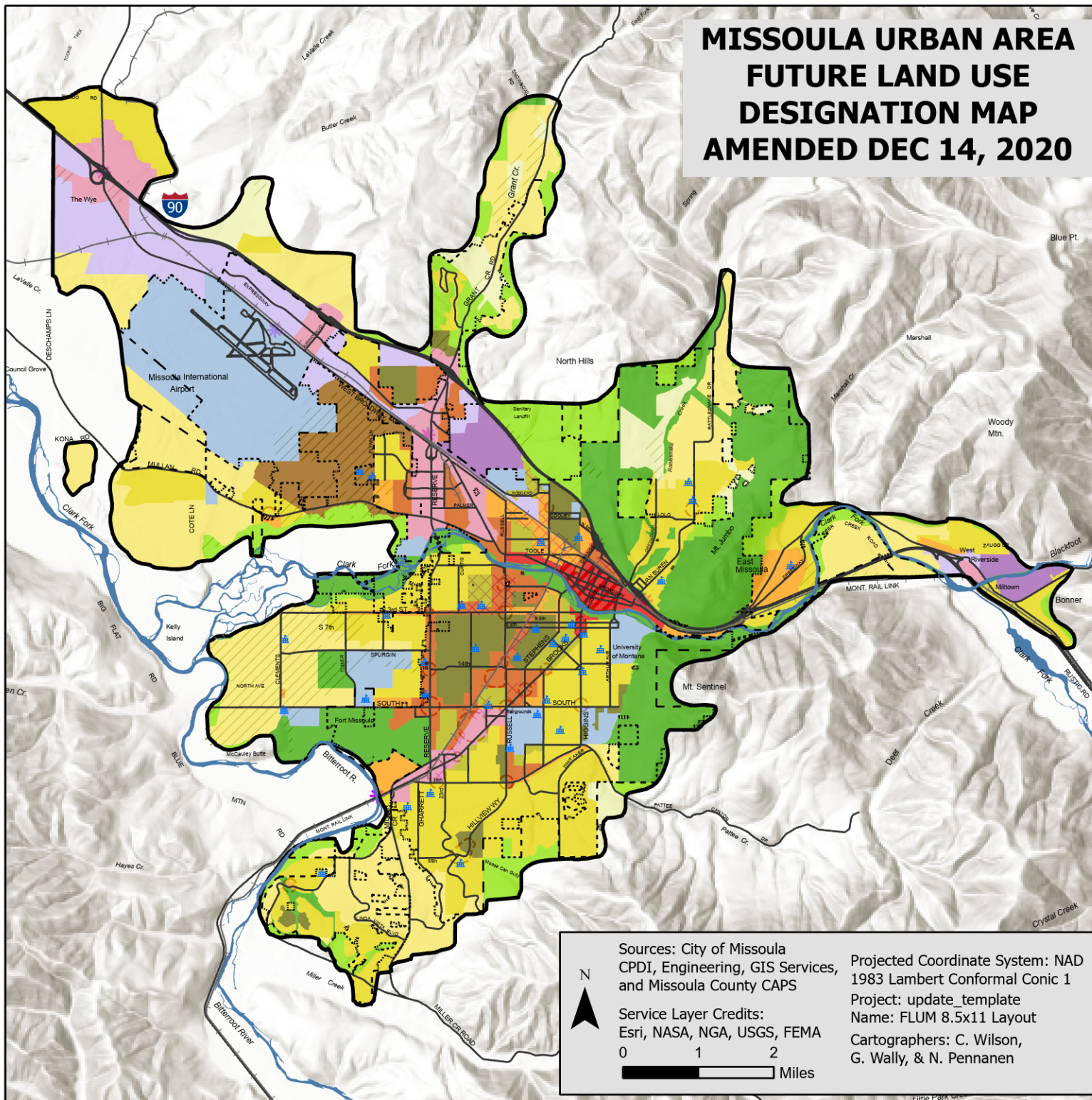


MISSOULA URBAN AREA FUTURE LAND USE DESIGNATION MAP AMENDED DEC 14, 2020



- City Limits
- Growth Policy Boundary
- Schools
- Land Use**
 - Community Mixed Use
 - Neighborhood Mixed Use
 - Urban Center
 - Regional Commercial and Services
 - Open and Resource
 - Parks and Open Lands
 - Public and Quasi-Public
 - Residential High Density - Greater than 24 units per acre
 - Residential Medium High Density - 12 to 23 units per acre
 - Residential Medium Density - 3 to 11 units per acre
 - Residential Low Density - 1 to 2 units per acre
 - Residential Rural - Less than 1 unit per 2 acres
 - Sxwtpqyen (S-wh-tip-KAYN) Neighborhoods
 - Industrial Light
 - Industrial Heavy
- Overlays**
 - City Core
 - Cottage Industry
 - Urban Agriculture
 - Node Development
 - ✳ Gateways

Sources: City of Missoula
CPDI, Engineering, GIS Services,
and Missoula County CAPS

Service Layer Credits:
Esri, NASA, NGA, USGS, FEMA

0 1 2
Miles

Projected Coordinate System: NAD
1983 Lambert Conformal Conic 1
Project: update_template
Name: FLUM 8.5x11 Layout
Cartographers: C. Wilson,
G. Wally, & N. Pennanen

