

2024 ANNUAL HIGHLIGHTS STORMWATER

City of Missoula

General Permit for Stormwater Discharges

Associated with Small Municipal Separate Storm Sewer Systems

MS4 Permit: MTR040007

Living Roof at Missoula County Department of Ecology

MISSION STATEMENT

The Stormwater Utility is committed to protecting public health and safety, natural resources, waterways, and our aquifer, while meeting or exceeding state and federal environmental quality regulations.



Grant Creek, Missoula Montana

STORMWATER INFRASTRUCTURE

8,583
DRY WELLS

3,400
INLETS

104
MILES OF
STORM PIPE

101
STORM PIPE
OUTFALLS

185
DETENTION
BASINS



Street Sweeping

First Line of Defense for Clean Water

Street sweeping isn't just about clean roads—it's one of the most effective tools for protecting water quality. In 2024, city crews swept 352 miles of roadway and removed over **480 dump trucks** of sediment, debris, and pollutants.


That effort kept harmful materials, like heavy metals and petroleum hydrocarbons, out of our waterways. This would have been enough pollutants to **contaminate over 13,000 Olympic-sized pools**.

These water quality benefits depend on reliable equipment. Our sweepers are considerably outdated, with very frequent breakdowns that greatly reduce efficiency and severely limit our service area.

Strengthening our street sweeping program is critical to safeguarding Missoula's rivers, aquifer, and public health.

STORMWATER WETLANDS

Filter, Reduce, Replenish



Green infrastructure (like this photo of the newly designed *Cattail Corner Stormwater Wetlands*) is like nature's way of handling stormwater. Instead of relying only on pipes and drains (i.e., grey infrastructure), green infrastructure uses plants, soil, and other natural elements to soak up, filter, and attenuate stormwater. These facilities not only enhance water quality but also mitigate flooding and create wildlife habitat.

Filtering pollutants—Plants and soil trap harmful substances before they reach waterways.

Reducing runoff—By soaking up rainwater, green spaces prevent flooding and erosion.

Replenishing groundwater—Instead of sending all rainwater down the drain, green infrastructure lets it seep into the ground, helping recharge underground water supplies.

Examples of green infrastructure include rain gardens, green roofs, bioswales, permeable pavement, and even simple things like planting more trees. It's a win-win for both people and the environment!



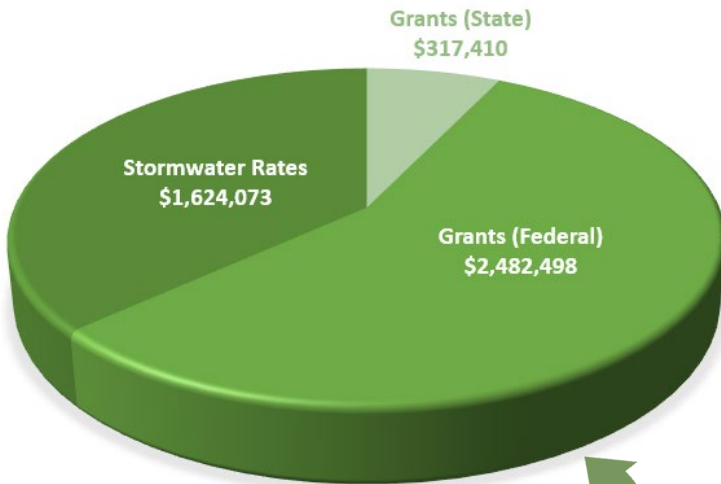
Accidents happen—like this diesel spill on Pattee Creek.

Thankfully, it was safely contained by our stormwater detention basin at Cutthroat Corner. Absorbent booms and skimming prevented it from reaching the Bitterroot River, protecting wildlife and water quality.

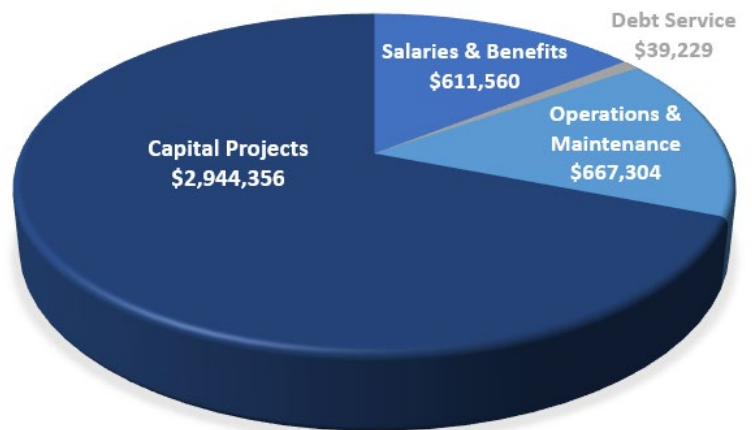
STORMWATER 2024 BUDGET

Stormwater Utility rates support the maintenance of existing infrastructure, improvements in stormwater pretreatment, and the development of more environmentally friendly systems. They also fund water sampling and testing, public outreach and education, and help ensure the City of Missoula complies with strict Federal and State regulations for drinking water and surface water quality.

FISCAL YEAR 2024 STORMWATER REVENUE



FISCAL YEAR 2024 STORMWATER UTILITY BUDGET

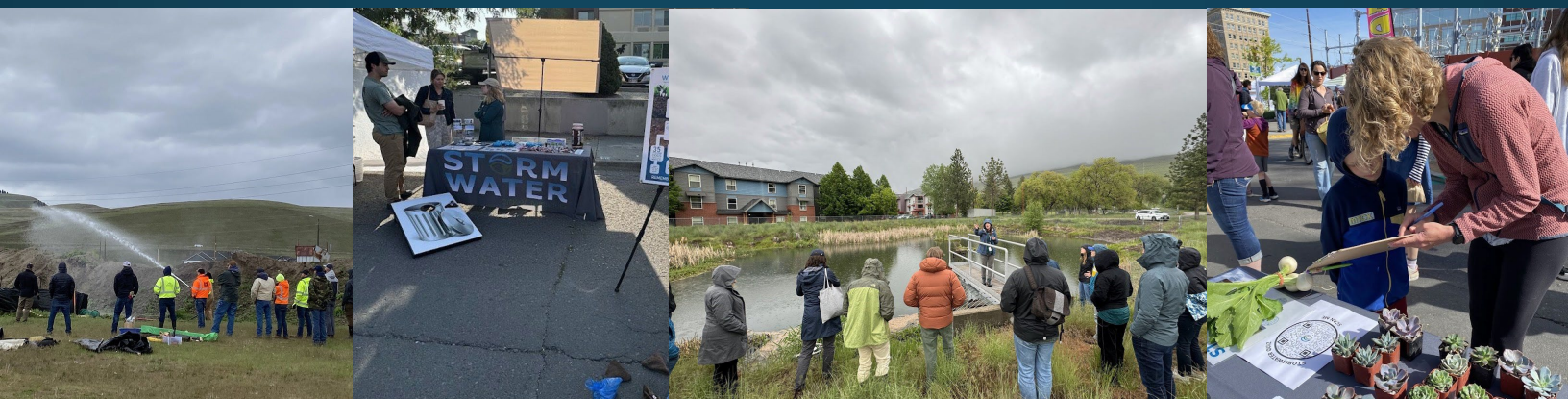


Let's talk about this pie chart. The Stormwater Utility has diligently secured both Federal and State grant funds to restore existing infrastructure and build new, low-impact stormwater systems (Capital Projects). Managing these funds responsibly is a top priority, ensuring we serve both our community and the environment. While we take environmental stewardship seriously, keeping customer rates low is just as important.



PUBLIC OUTREACH, EDUCATION, AND PARTICIPATION

Catch us at various community events like the Clark Fork River Market every season, where we bring the fun and the facts! Grab a native plant to boost your pollinator garden, test your skills in a game that proves why picking up after your pet is a civic duty (and not just a courtesy), or geek out over cool science displays about Missoula's one-and-only aquifer. Education has never been this entertaining!



DO YOU KNOW WHAT WATERSHED YOU LIVE IN?



SCAN the QR Code to learn more about Missoula watersheds – view maps, history, and how you can help local water quality



Can you name
all seven
Missoula
watersheds?

1. Clark Fork River 2. Bitterroot River 3. Pattee Creek 4. Rattlesnake Creek 5. Miller Creek 6. Grant Creek 7. Butler & Lavalie Creek

GIS MAPPING & STORMWATER DRAINAGE CONCERNS

Did you know you can report stormwater drainage concerns online?

Our online reporting tool allows you to add a concern to our GIS map. You can see if other complaints have been made regarding the same location, make comments, ask to be contacted, and even attach photos!

Scan the QR code below to be taken to the website:



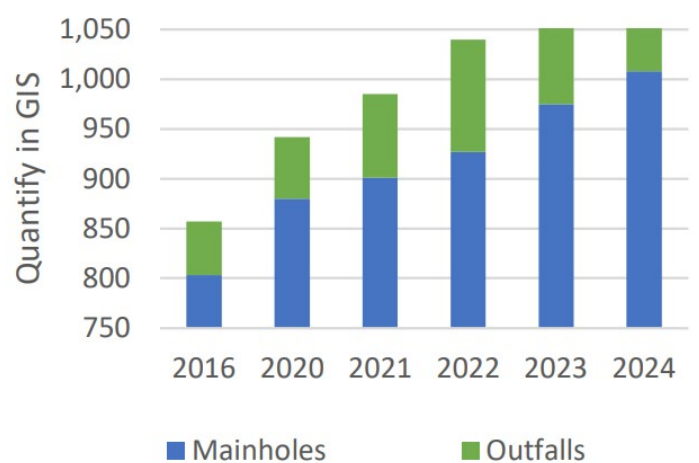
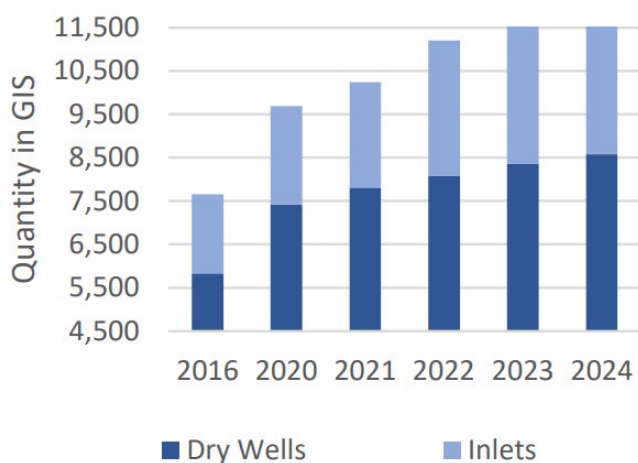
Here's an inside look at reported drainage concerns across the city.

Blue means the concern has been corrected.

Red means the concern is in the process of being addressed.

Every year our stormwater infrastructure grows—locating previously unknown assets, reconciling existing ones, and installing new facilities.

All of this vital infrastructure requires regular inspection and maintenance.





Grant Creek, Missoula Montana

STORMWATER

City of Missoula



VISIT US ONLINE TO LEARN MORE!