

APPENDIX B

Facility Asset Quality Evaluations



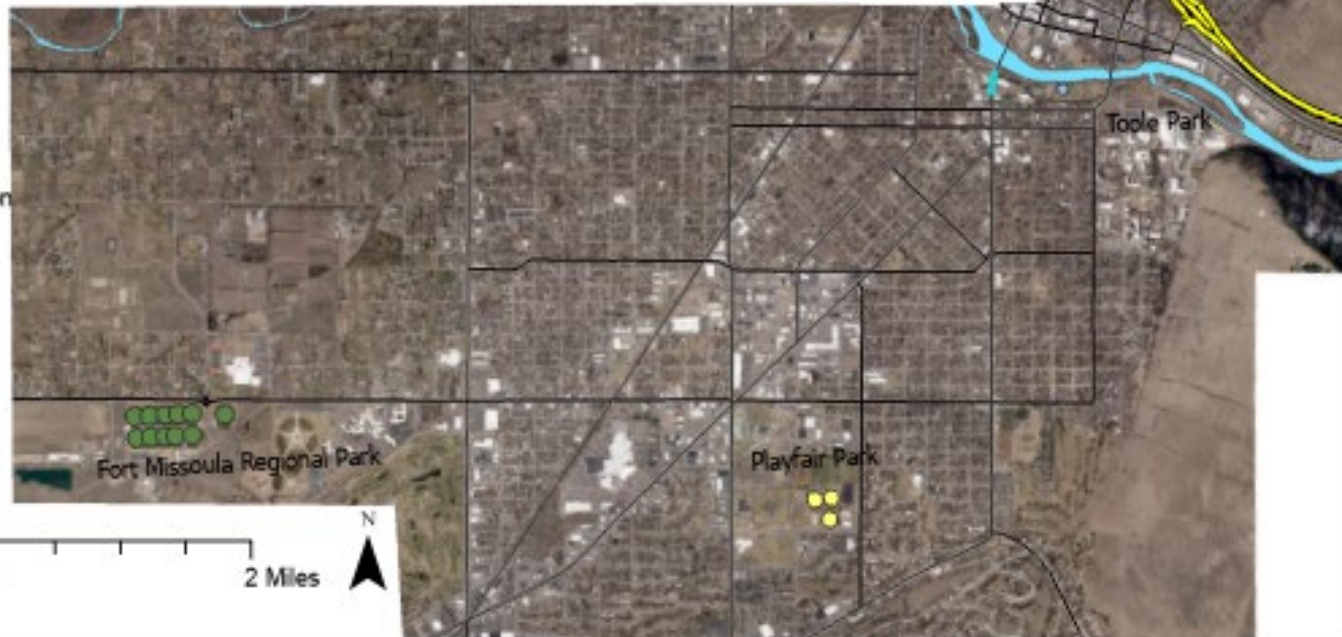
City Managed Athletic Fields - quality assessment

Park Name	Facility Type	Acres	Approx. Year Built	Is the Feature ADA Accessible	Does the Feature Drain Adequately	Condition of chainlink fence(s)	Condition of hardscape surface(s)	Condition of grades
Playfair	Athletic Fields 3	2.18	1990	2	1			3
Playfair	Athletic Fields 1	2.69	1990	1	1			3
Playfair	Athletic Fields 2	3.12	1990	1	1			3
Toole	Athletic Fields	2.30	1990	2	2	1		1
Duncan	Athletic Fields	2.14	2012	2	1			1
FMRP Balla Vista Synthetic Field	Athletic Fields	2.57	2018	1	1	1	1	1
FMRP Bowd Fields 5-9	Athletic Fields	12.00	2018	1	1			1
FMRP Green Girdon Fields 1-4	Athletic Fields	9.24	2018	1	1			1
FMRP Pitch	Athletic Fields	4.32	2018	1	1			1

Legend

-  Railroad
-  I 90
-  Rivers
-  Major Roads
- Athletic Field Condition**
-  Good
-  Fair
-  Poor

0 0.5 1 2 Miles

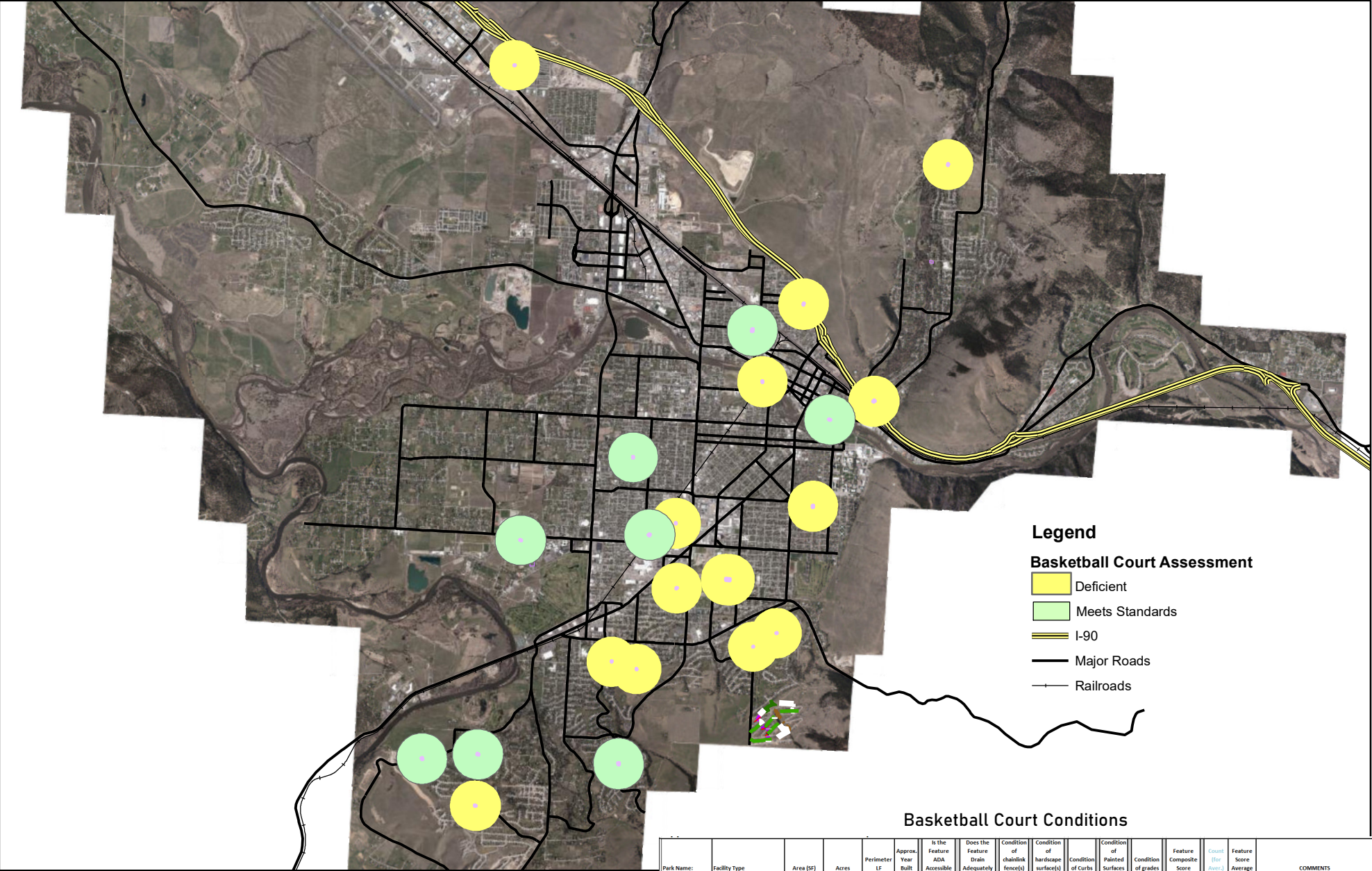


Duncan Field

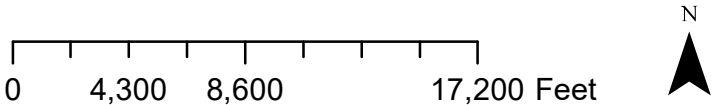
Toole Park

Playfair Park

Fort Missoula Regional Park

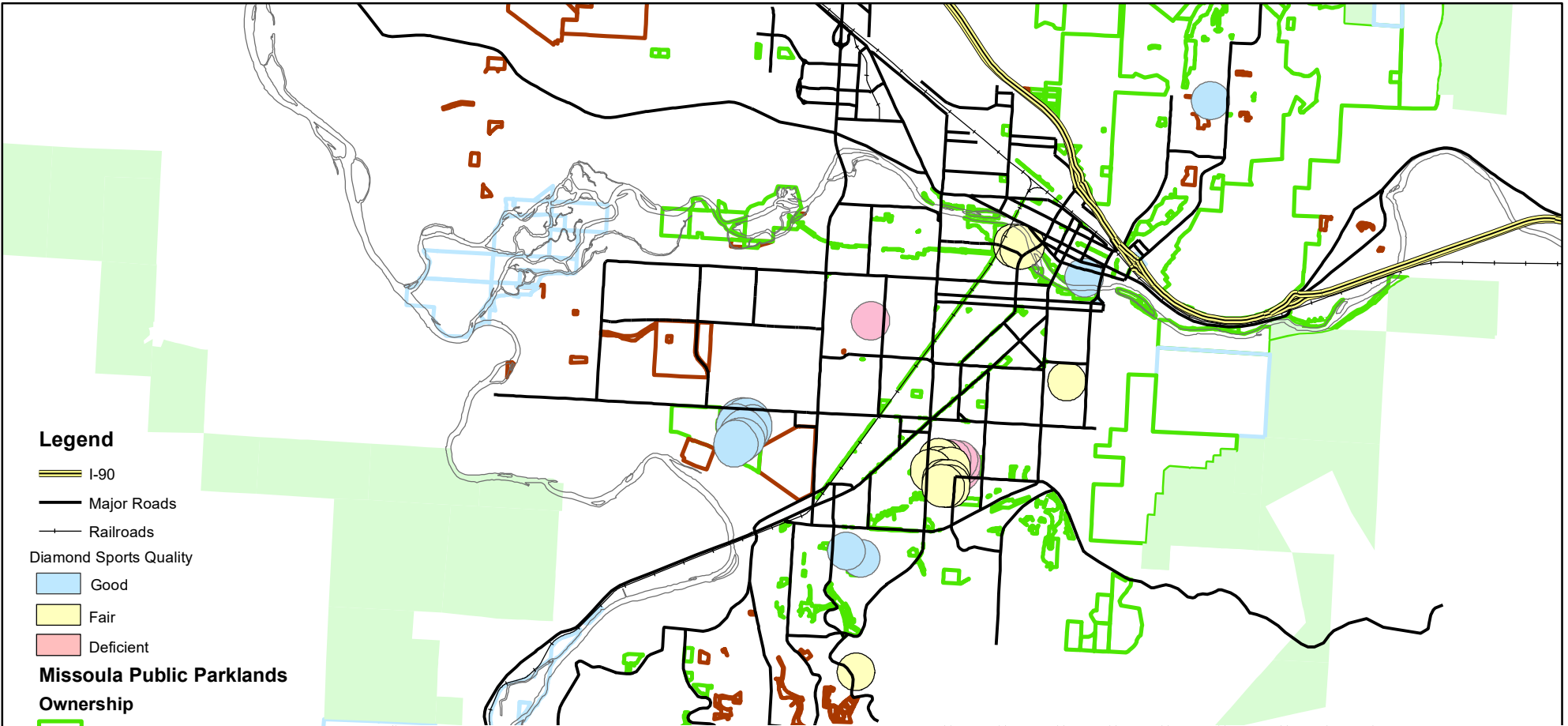


City Managed Picnic Shelters - quality assessment



Basketball Court Conditions

Park Name	Facility Type	Area (SF)	Acres	Perimeter LF	Approx. Year Built	Is the Feature ADA Accessible	Does the Feature Drain Adequately	Condition of chailink fence(s)	Condition of hardscape surface(s)	Condition of Curbs	Condition of Painted Surfaces	Condition of grades	Feature Composite Score	Count for Best 3	Feature Score Average	COMMENTS
Whitaker	Basketball Courts	514.7		93.4	1990	2	3		3		3	2	13	5	2.60	1/4 court, Liquid Asphalt 2023
Honeyuckle	Basketball Courts	600.0		120.0	1990	2	2		3		3	2	12	5	2.40	1/2 court, crack fill and seal 2023
Mileneo	Basketball Courts	3,876.0		190.1	1990	2	1		3		3	2	11	5	2.20	1/2 court, crack fill and seal 2023
Boyd	Basketball Courts	1,741.3		176.2	1990	2	1		2		3		8	4	2.00	1/2 court
Marilyn	Basketball Courts	3,859.5		256.1	1990	1	1	1	3		3	3	12	6	2.00	existing court in poor condition. New bball
Penland	Basketball	1,454.8		154.2	1990	2	1		3		3	1	10	5	2.00	1/2 court
Redfern	Basketball	1,912.7		177.4	1980	2	1		3		3	1	10	5	2.00	1/2 court
Northside	Basketball Courts	4,347.0		287.5	1970	2	1	2	2		3	1	11	6	1.83	Crack fill and seal 2023
Nicole	Basketball Courts	3,001.9		233.0	1990	2	1		1		3		7	4	1.75	converted former tennis court
Playfair	Basketball Courts	22,320.0		645.2	1990	2	1		2		2		7	4	1.75	4 courts, crack fill and seal 2023
Donner	Basketball Courts	5,520.0		256.5	1990	1	1		3		3	1	10	6	1.67	1/2 court, crack fill and seal 2022
LW North	Basketball Courts	2,063.2		199.4	1970	2	2		2		1	1	8	5	1.60	concrete
Kiwanis	Basketball Courts	3,491.0		258.1	1960	1	1		3		1	1	7	5	1.40	
Maloney Ranch	Basketball Courts	3,991.3		264.0	1990	1	1		1		2		5	4	1.25	
McCormick	Basketball Courts	3,206.9		239.3	2015	2	1		1		1	1	6	5	1.30	needs hardscape path
Franklin	Basketball Futsal Court	3,707.0		246.0	2023	1	1		1		1	1	5	5	1.50	multi-purpose court
Gregory	Basketball Courts				1995	1	1	1	1		1	1	6	5	1.00	2 shared court/use tennis court size
Montana Rail Link	Basketball Courts				2019	1	1		1		1	1	5	5	1.00	
Pineview	Basketball Courts			27,626.7	1990	1	1	1	1		1	1	6	6	1.00	2 shared courts/use tennis court size
Skyview	Basketball Futsal Court	5,509.0		307.0	2024	1	1	1	1		1	1	6	6	1.00	Reconstruction Spring 2024 Com 2024
Westside	Basketball Futsal Courts	7,057.0		236.0	2022	1	1	1	1	1	1	1	7	7	1.00	Updated with park reconstruction

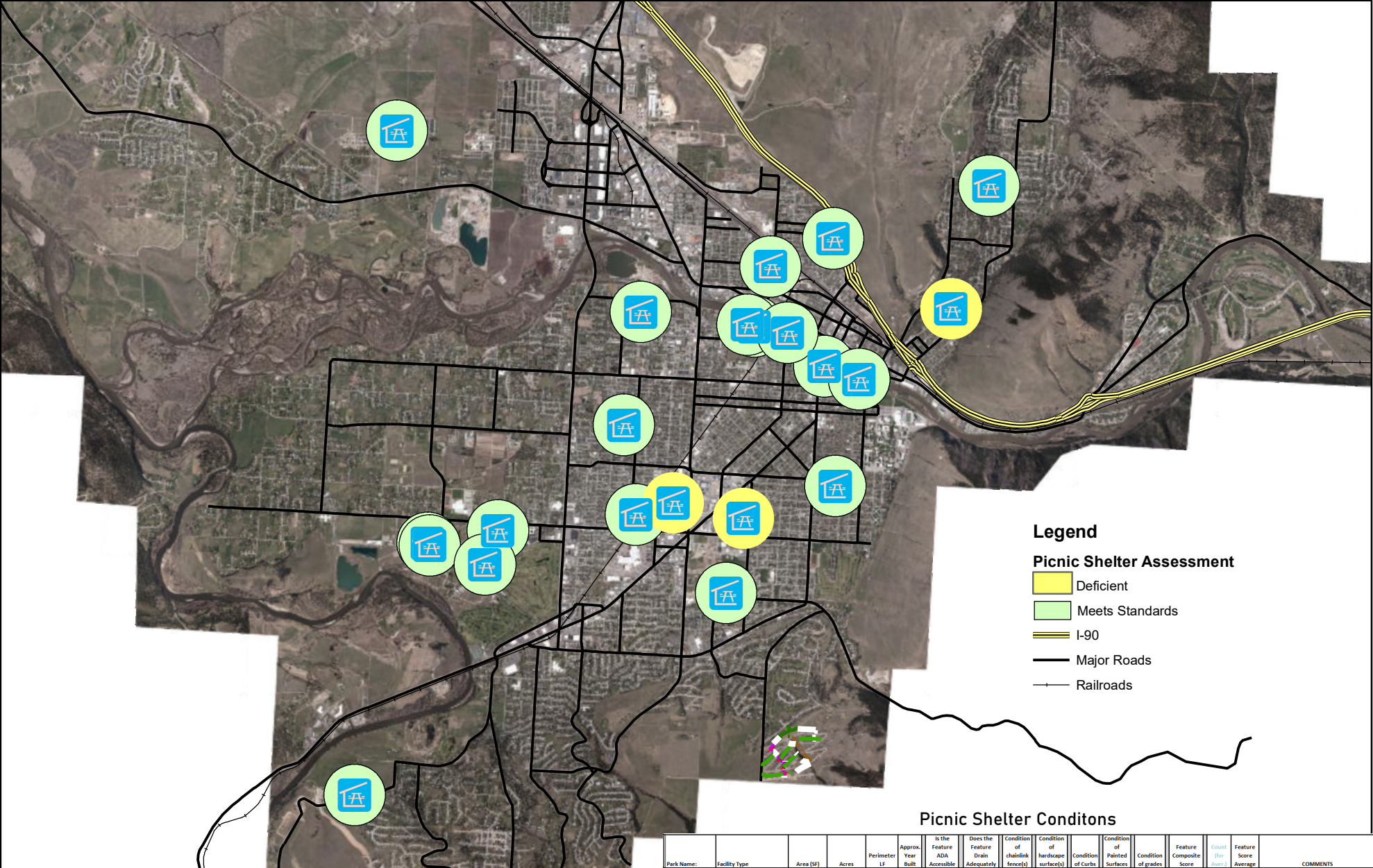


Park Name:	Facility Type	Area (SF)	Acres	Perimeter LF	Approx. Year Built	Is the Feature ADA Accessible	Does the Feature Drain Adequately	Condition of chainlink fence(s)	Condition of hardscape surface(s)	Condition of Curbs	Condition of Painted Surfaces	Condition of grades	Feature Composite Score	Count (for Aver.)	Feature Score Average	COMMENTS
Franklin	Ball Field	6,534.0	0.15	915.1	1990	2	2	3				2	9	4	2.25	Deficient
Playfair	Ball Field East LL 2	47,044.8	1.08	871.6	1990	2	1	2			3	2	10	5	2.00	Deficient
Playfair	Ball Field East LL 3	47,916.0	1.10	858.6	1990	2	1	2			3	2	10	5	2.00	Deficient
Playfair	Ball Field East LL 4	48,351.6	1.11	864.7	1990	2	1	2			3	2	10	5	2.00	Deficient
Playfair	Ball Field West LL 5	48,351.6	1.11	866.1	1990	1	1	3			3	2	10	5	2.00	Deficient
McCormick	Ball Field1	83,635.2	1.92	1,142.1	1990	1	2	2	2		2	2	11	6	1.83	softball - lighted - Fair condition
McCormick	Ball Field2	84,942.0	1.95	1,115.5	1990	1	2	2	2		2	2	11	6	1.83	softball - lighted
Playfair	Ball Field South LL 1	40,946.4	0.94	796.0	1990	2	1	2			2	2	9	5	1.80	Fair condition
Playfair	Ball Field South LL 2	41,817.6	0.96	806.8	1990	2	1	2			2	2	9	5	1.80	Fair condition
Playfair	Ball Field South LL 3	41,817.6	0.96	798.5	1990	2	1	2			2	2	9	5	1.80	Fair condition
Playfair	Ball Field South LL 4	43,124.4	0.99	822.8	1990	2	1	2			2	2	9	5	1.80	Fair condition
Playfair	Ball Field East LL 1	44,866.8	1.03	820.6	1990	1	1	2			3	2	9	5	1.80	Fair condition
Playfair	Ball Field Senior 2	91,476.0	2.10	1,191.2	1990	2	1	2			2	2	9	5	1.80	Fair condition
Playfair	Ball Field Senior 3	92,347.2	2.12	1,174.7	1990	2	1	2			2	2	9	5	1.80	Fair condition
Playfair	Ball Field Senior 4	101,059.2	2.32	1,212.1	1990	2	1	2			2	2	9	5	1.80	Fair condition
Skyview	Ball Field	-	-	-	1990	2	1	3				1	7	4	1.75	Practice backstop - Fair
LW North	Ball Field	-	-	-	1970	2	1					2	5	3	1.67	Practice backstop - Fair
Bonner	Ball Field	6,534.0	0.15	286.8	1990	2	1	2			1	2	8	5	1.60	Fair condition
Playfair	Ball Field Senior 1	89,733.6	2.06	1,181.0	1990	1	1	2			2	2	8	5	1.60	Fair condition
Honeysuckle	Ball Field	-	-	-	1990	2	1	2				1	6	4	1.50	Practice Backstop - Good
Wapikia	Ball Field	-	-	-	1990	2	1	2				1	6	4	1.50	Practice Backstop - Good
Kiwanis	Ball Field	-	-	-	2017	2	1	1				1	5	4	1.25	Practice Backstop - Good
Maloney Ranch	Ball Field	-	-	-	1990	2	1	1				1	5	4	1.25	Practice Backstop - Good
Pineview	Ball Field	-	-	-	1990	2	1	1				1	5	4	1.25	Practice Backstop - Good
Fort Missoula	Ball field 1 (5-plex)	87,063.2	2.00	1,171.0	2018	1	1	1	1		1	1	6	6	1.00	softball - lighted - good condition
Fort Missoula	Ball field 2 (5-plex)	87,038.0	2.00	1,166.9	2018	1	1	1	1		1	1	6	6	1.00	softball - lighted - good condition
Fort Missoula	Ball field 3 (5-plex)	88,557.6	2.03	1,178.4	2018	1	1	1	1		1	1	6	6	1.00	softball - lighted - good condition
Fort Missoula	Ball field 4 (5-plex)	87,249.6	2.00	1,172.9	2018	1	1	1	1		1	1	6	6	1.00	softball - lighted - good condition
Fort Missoula	Ball field 5 (5-plex)	87,783.3	2.02	1,168.9	2018	1	1	1	1		1	1	6	6	1.00	softball - lighted - good condition
Fort Missoula	Ball field 6	90,454.5	2.08	1,178.9	2018	1	1	1	1		1	1	6	6	1.00	softball - good
Fort Missoula	Ball field 7	88,672.1	2.04	1,174.7	2018	1	1	1	1		1	1	6	6	1.00	softball

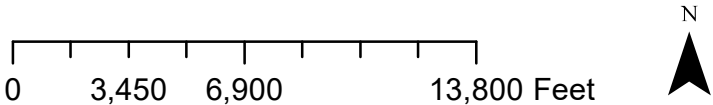
Diamond Sports Quality



0 0.5 1 2 Miles

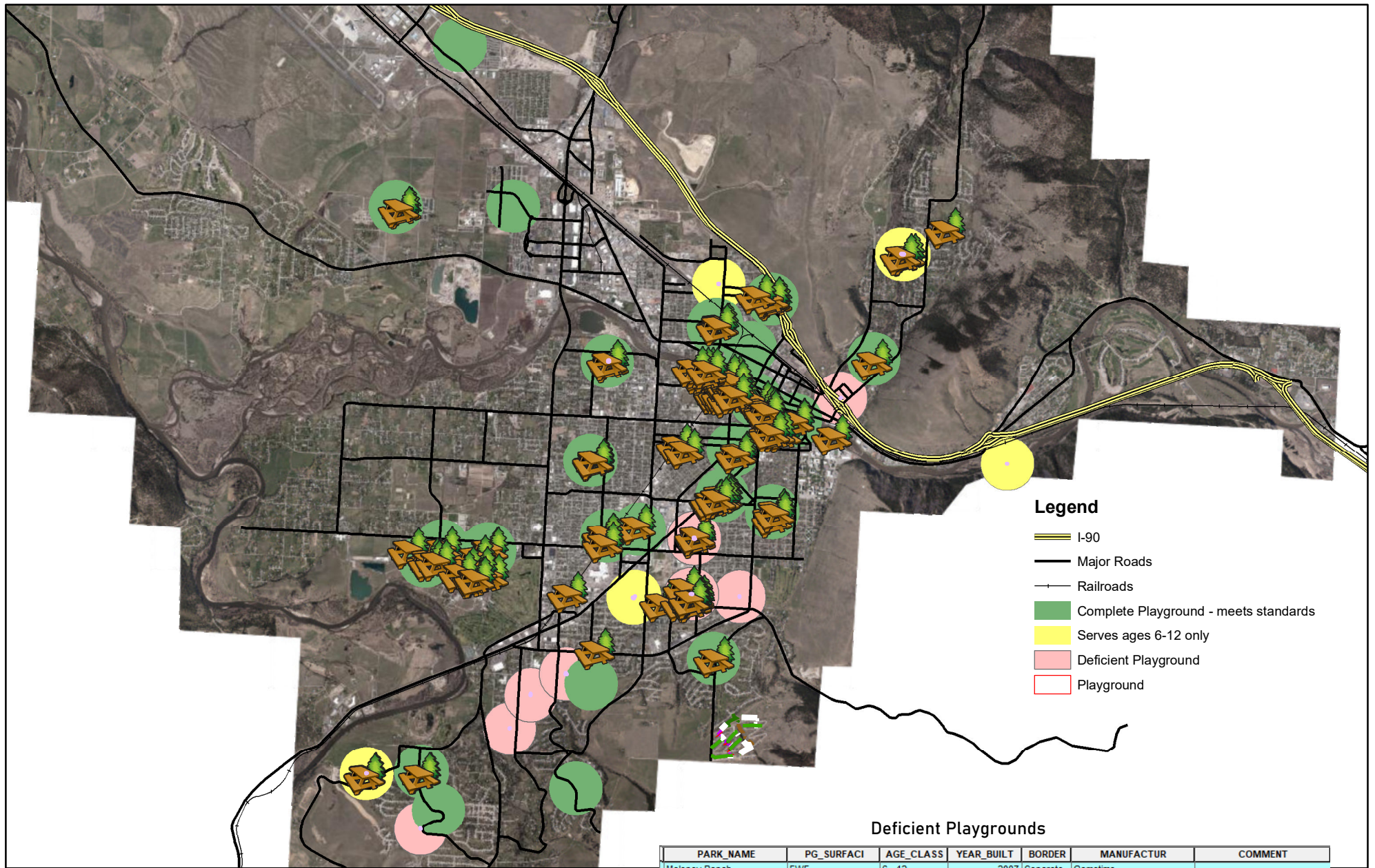


City Managed Picnic Shelters - quality assessment



Picnic Shelter Conditions

Park Name:	Facility Type	Area (SF)	Acres	Perimeter LF	Approx. Year Built	Is the Feature ADA Accessible	Does the Feature Drain Adequately	Condition of chainlink fence(s)	Condition of hardscape surface(s)	Condition of Curb	Condition of Painted Surfaces	Condition of grades	Feature Composite Score	Count (for Ave)	Feature Score Average	COMMENTS
Southside Lions	Shelter Picnic	1,135.0			1990	2	3		3		3		11	4	2.75	
McLeod	Shelter Picnic	410.0			1990	2	1		3		2		8	4	2.00	
Bonner	Shelter Picnic	504.0			1990	1	1		2		3		7	4	1.75	
Franklin	Shelter Picnic	690.0			1990	2	1		1		2		6	4	1.50	
Caras	Shelter Picnic - Pavilion	7,364.0			1990	1	1		2		1		5	4	1.25	Large capacity event shelter
Greenough	Shelter Picnic	1,334.0			1940	1	1		2		1		5	4	1.25	Roof replaced 2015
McCormick	Shelter Picnic	85.0			2006	2	1		1		1		5	4	1.25	Silver Lagoon
44 Ranch	Shelter Picnic	630.0			2011	1	1		1		1		4	4	1.00	Custom
Caras	Shelter Picnic	1,246.0			2010	1	1		1		1		4	4	1.00	AKA Bandshell shelter
FMRP City	Shelter Picnic - Overlook				2016	1	1		1		1		4	4	1.00	Custom
FMRP City	Shelter Picnic - Pavilion				2016	1	1		1		1		4	4	1.00	Custom
FMRP County	Shelter Picnic - Greens				2017	1	1		1		1		4	4	1.00	Custom
FMRP County	Shelter Picnic - Meadowlark				2017	1	1		1		1		4	4	1.00	Custom
Kiwanis	Shelter Picnic	1,368.0			2017	1	1		1		1		4	4	1.00	Polygon
Maloney Ranch	Shelter Picnic	500.0			2011	1	1		1		1		4	4	1.00	
Montana Rail Link	Shelter Picnic				2019	1	1		1		1		4	4	1.00	Polygon
Northside	Shelter Picnic	616.0			2015	1	1		1		1		4	4	1.00	Custom
Pineview	Shelter Picnic	1,225.0			2011	1	1		1		1		4	4	1.00	
Playfair	Shelter Picnic	1,312.0			1960	1	1		1		1		4	4	1.00	
Silver	Shelter Picnic	215.0			2010	1	1		1		1		4	4	1.00	Custom
Silver	Shelter Picnic - Pavilion	198.0			2010	1	1		1		1		4	4	1.00	Custom
Westside	Shelter Picnic	620.0			2020	1	1		1		1		3	3	1.00	cloth roof



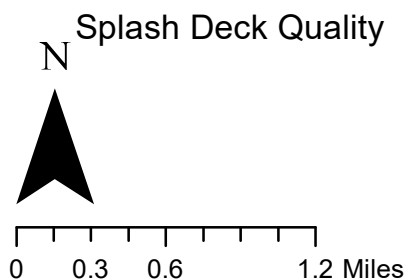
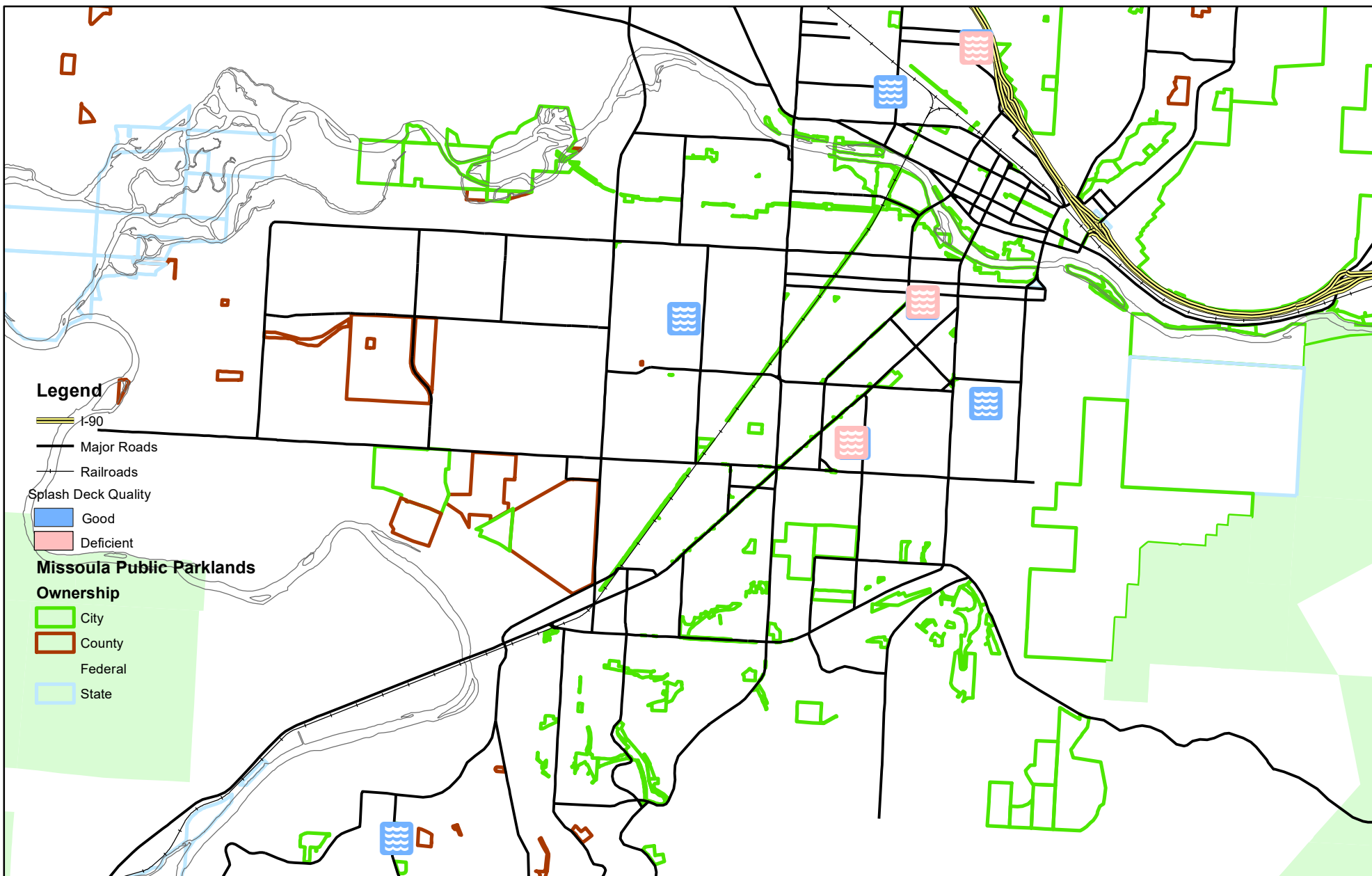
City Managed Playgrounds - quality assessment

0 4,050 8,100 16,200 Feet

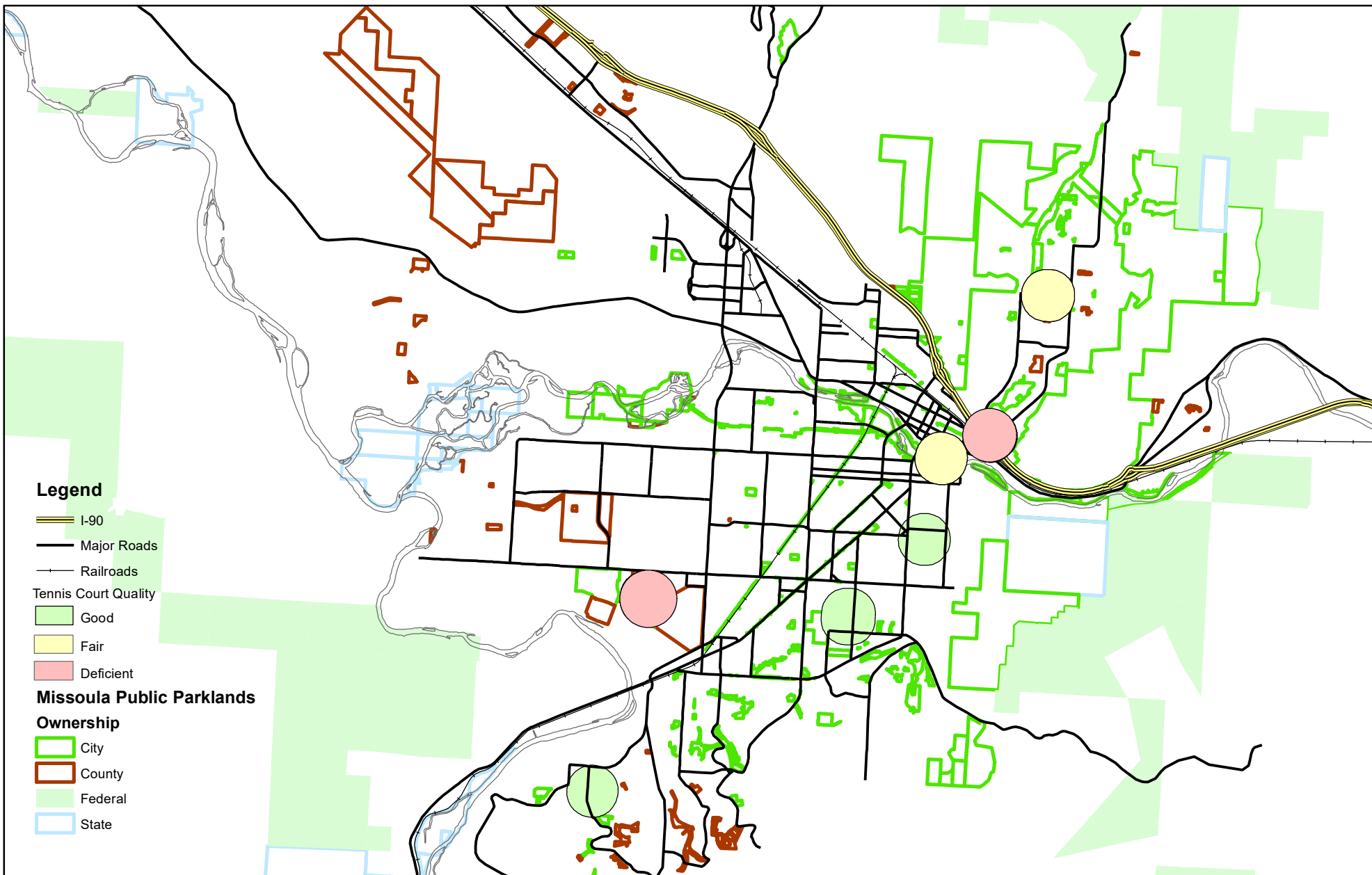


Deficient Playgrounds

PARK_NAME	PG_SURFACI	AGE_CLASS	YEAR_BUILT	BORDER	MANUFACTUR	COMMENT
Maloney Ranch	EWf	6 - 12	2007	Concrete	Gametime	
Boyd	EWf	6 - 12	2010	Concrete	Landscape Structures	
LaFray	EWf	6 - 12	2012	Concrete	Playworld	
Pineview	EWf	6 - 12	2010	Concrete	Kompan	
Ben Hughes	EWf	6 - 12	2013	HDPE	Miracle	renovated 2013
White Pine	EWf	6-12	2010	Concrete	Landscape Structures	
Nicole	Sand	6 - 12	0	None	Miracle	
River Pine	Sand	6 - 12	2000	Concrete	Playsense	
Pheasant Run	Sand	6 - 12	1996	None	Gametime	Mixed equip
Honeysuckle	Sand	6 - 12	1998	Timber	Gametime	
Lester	Sand	6 - 12	1999	None	Gametime	Mixed equip
Playfair	Sand	6 - 12	1998	None	Gametime	Mixed equip
Southside Lions	Sand	6 - 12	1992	Concrete	Gametime	Swings V. Poor
Gregory	Sand	6 - 12	2000	Concrete	Gametime	



Park Name:	Facility Type	Area (SF)	Acres	Perimeter LF	Approx. Year Built	Is the Feature ADA Accessible	Does the Feature Drain Adequately	Condition of chainlink fence(s)	Condition of hardscape surface(s)	Condition of Curbs	Condition of Painted Surfaces	Condition of grades	Feature Composite Score	Count (for Aver.)	Feature Score Average	COMMENTS
Northside	Spray/Splash Decks	5,693.5		267.5	1940	1	2		3	3	3		12	5	2.40	Scheduled for Demo
Southside Lions	Spray/Splash Decks	3,048.0		195.0	1990	1	3		1		3		8	4	2.00	
Sacajawea	Spray/Splash Decks	4,735.0		244.0	1990	2	3		1	1	2		9	5	1.80	
Franklin	Spray/Splash Decks	2,317.0		170.0	2000	1	1	1	1	1	2		7	6	1.17	
Bonner	Spray/Splash Decks	3,188.0		200.0	1990	1	1		1		1		4	4	1.00	
Marilyn	Spray/Splash Decks	3,005.0		204.0	1990	1	1		1	1	1		5	5	1.00	
Westside	Spray/Splash Decks	2,209.0		167.0	2005	1	1	1	1		1		5	5	1.00	



Tennis Court Quality

Park Name:	Facility Type	Area (SF)	Acres	Perimeter LF	Approx. Year Built	Is the Feature ADA Accessible	Does the Feature Drain Adequately	Condition of chainlink fence(s)	Condition of hardscape surface(s)	Condition of Curbs	Condition of Painted Surfaces	Condition of grades	Feature Composite Score	Count (for Aver.)	Feature Score Average	COMMENTS
FMRP - County	Tennis Courts	53,646.0	1.2		1980	1	2	2	3		2	2	12	6	2.00	8 Tennis Courts, Color coat in 2017
Kiwanis	Tennis Courts	14,515.2	2.0	482.4	1960	1	1	1	2		2	1	8	6	1.33	2 Tennis Courts
Gregory	Tennis Courts	15,675.1	2.0	500.8	1995	2	1	1	1		1	1	7	6	1.17	2 Tennis courts - 2 duel use b-ball
Bonner	Tennis Courts	14,023.7	1.0	458.1	1990	1	1	1	1		1		5	5	1.00	2 Tennis Courts - 2 duel use p-ball
Pineview	Tennis Courts	53,404.7	3.0	599.0	1990	1	1	1	1		1	1	6	6	1.00	3 Tennis Courts, 1 shared B-ball
Playfair	Tennis Courts	75,258.0	1.7	1,177.0	2022	1	1	1	1		1	1	6	6	1.00	12 Tennis Courts
Marilyn	Tennis, PB, BB Court	8,345.0	0.2	390.0	2023	1	1	1	1		1		5	5	1.00	1 Tennis Court - shared b-ball and P-ball

