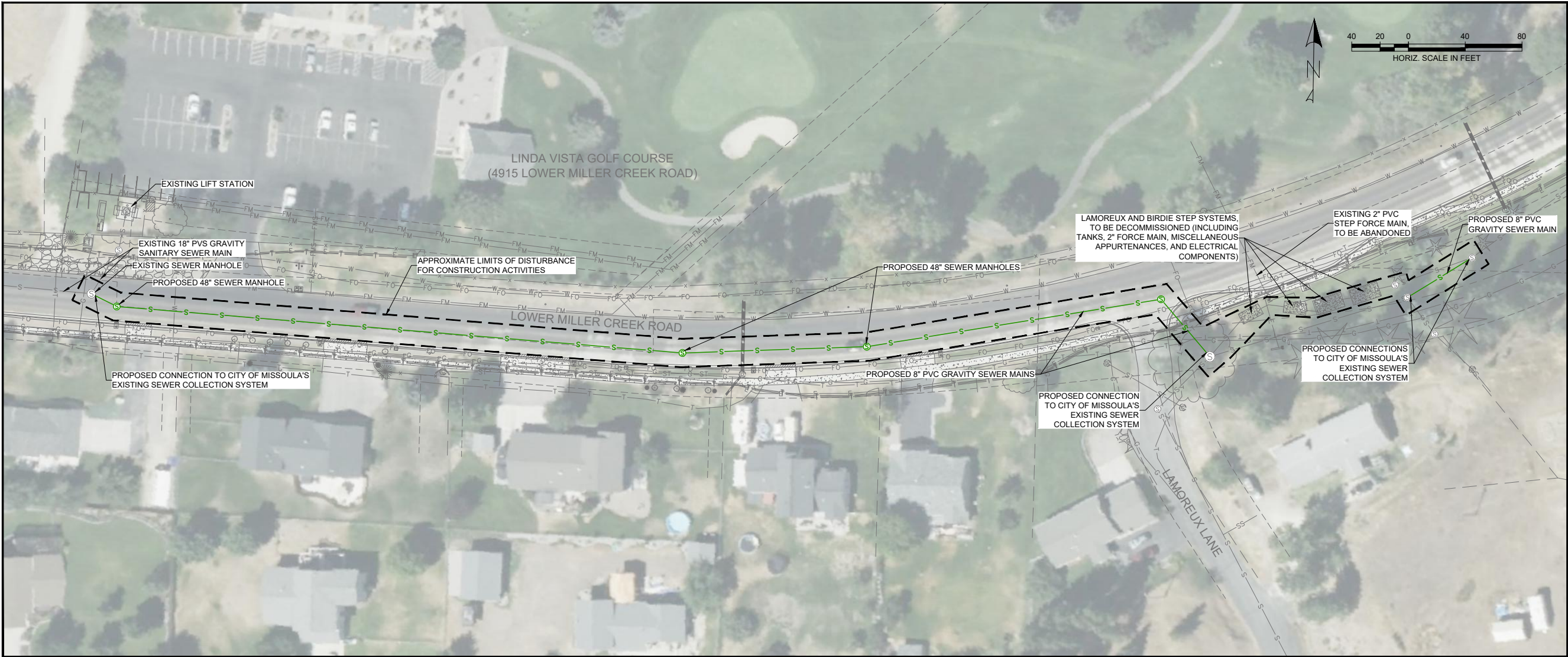


12/30/2025 4:12 PM Z:\Public Works\Utilities\Projects\000 Projects by Year\2025\2025-MSS-PWI-00020 Lamoreux STEP Decommissioning\Design\CAD\Working\Sheets\C-STEP-EXHB.dwg



PROPOSED PROJECT NOTES:

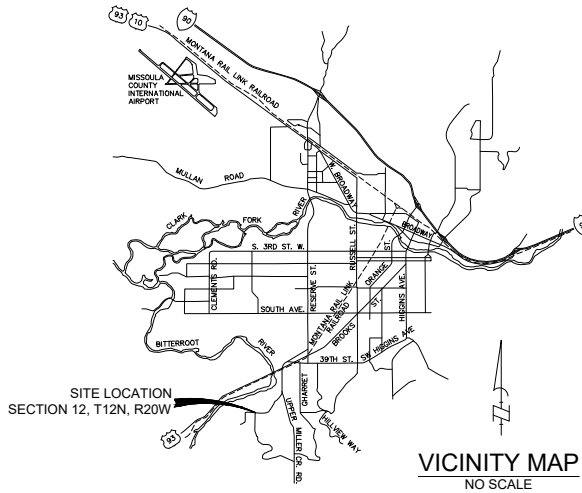
1. THE LAMOREUX AND BIRDIE PUMP STATIONS ARE OWNED AND OPERATED BY THE CITY OF MISSOULA AND ARE LOCATED ADJACENT TO THE INTERSECTION OF LAMOREUX LANE AND LOWER MILLER CREEK ROAD. THE EXISTING SYSTEM CONSISTS OF FOUR SEPTIC TANKS, BURIED PVC PIPING, AND VARIOUS ELECTRICAL COMPONENTS.
2. PROPOSED 8" PVC GRAVITY SEWER MAINS AND MANHOLES WILL BE INSTALLED NEAR THE LAMOREUX AND BIRDIE SYSTEMS TO INTERCEPT THE EXISTING FLOWS. THE GRAVITY MAINS WILL RUN TO THE WEST IN LOWER MILLER CREEK ROAD AND WILL CONNECT TO AN EXISTING MANHOLE. THIS WASTEWATER ULTIMATELY FLOWS TO THE CITY OF MISSOULA'S WASTEWATER TREATMENT PLANT AT 1100 CLARK FORK LANE, MISSOULA, MT 59808.
3. THE EXISTING LAMOREUX AND BIRDIE RANCH STEP SYSTEMS WILL BE DECOMMISSIONED BY PUMPING/CLEANING THE TANKS, REMOVING EXISTING PUMPS AND ELECTRICAL COMPONENTS, PLUGGING ALL PIPING, AND FILLING THE TANKS WITH WASHED CRUSHED AGGREGATE.

CONSTRUCTION NOTES:

1. ALL PROJECT WORK WILL OCCUR IN CITY OF MISSOULA RIGHT-OF-WAY AND/OR EXISTING PUBLIC UTILITY EASEMENTS.
2. ALL AREAS DISTURBED BY CONSTRUCTION ACTIVITIES SHALL BE RESTORED TO INITIAL OR BETTER CONDITIONS PER CITY OF MISSOULA STANDARDS.
3. ALL CONSTRUCTION WILL BE IN ACCORDANCE WITH MONTANA PUBLIC WORKS STANDARD SPECIFICATIONS (MPWSS, 7TH EDITION, APRIL 2021), MONTANA DEPARTMENT OF ENVIRONMENTAL QUALITY CIRCULAR 2, AND THE MISSOULA CITY PUBLIC WORKS STANDARDS AND SPECIFICATIONS (MCPWSS, JANUARY 2024).
4. PRIOR TO CONSTRUCTION, THE CONTRACTOR WILL BE REQUIRED TO APPLY FOR A CITY OF MISSOULA EXCAVATION PERMIT AND MUST HAVE AN APPROVED TRAFFIC CONTROL PLAN AND STORM WATER POLLUTION PREVENTION PLAN (SWPPP).

EXISTING	
— W —	WATER MAIN
— WS —	WATER SERVICE
— S —	SANITARY SEWER MAIN
— SFM —	SANITARY FORCE MAIN
— SGM —	SEPTIC TANK EFFLUENT GRAVITY MAIN
— SS —	SANITARY SEWER SERVICE
— OH —	OVERHEAD UTILITY
— E —	ELECTRIC LINE
— G —	GAS LINE
— T —	TELEPHONE LINE
— TV —	TELEVISION LINE
— FO —	FIBER OPTIC LINE
— X —	FENCE LINE
- - - -	RIGHT-OF-WAY
⊗	SEPTIC TANK
⊙	SANITARY SEWER MANHOLE
PROPOSED	
— S —	SANITARY SEWER MAIN
⊙	SANITARY SEWER MANHOLE
⌈	CAP

PRELIMINARY DRAFT
SUBJECT TO CHANGE



DRAFT

REVISIONS:	NO.	DESCRIPTION	DATE
DESIGNED:		ACL	
DRAFTED:		ACL	
CHECKED:		AJS	
PLOTTED:		12/30/2025	

LAMOREUX STEP DECOMMISSIONING

PROPOSED PROJECT EXHIBIT

MDEQ: #####

2025-MSS-PWI-00020

EXHIBIT

1 OF 1