



JAN-DEC 2025

# ANNUAL REPORT

MISSOULA PARKS AND RECREATION • HIGHLIGHTS AND IMPACT FROM OUR PARTNERS

## SPECIAL THANKS TO

### FRIENDS OF MISSOULA PARKS SUPPORTERS (501c3)

[WWW.FMPARKS.ORG](http://WWW.FMPARKS.ORG)

#### BILL PHELPS FAMILY

Silver Lagoon Improvements

#### BRYAN TIPP

NEVA HASSANEIN

TRUST MONTANA

Open Space property donations

TYKESON FAMILY CHARITABLE TRUST

Youth Programming Support

## WHO ARE WE?

Missoula Parks and Recreation provides places, programs and services essential to our quality of life; reflects community values; fosters a sense of place; and develops and preserves infrastructure and lands critical to supporting a healthy community.

Our Partners In Parks support this mission by providing recreation grants for low-income families, helping to build new parks and trails and enhance existing facilities, and volunteering their time to work with Parks and Recreation projects and recreation programs.

## FMRP LEAF-A-LEGACY

Visit [www.missoulaparks.org](http://www.missoulaparks.org) today or phone 721-PARK to more about Fort Missoula Regional Park's donor program, Leaf-A-Legacy.

**DONATE TODAY!**

[WWW.MISSOULAPARKS.ORG/DONATE](http://WWW.MISSOULAPARKS.ORG/DONATE)

# \$465,576

Cash and in-kind donations for  
Parks projects and programs



# 3406

Volunteer hours from

# 187

individuals

For special events,  
parks, trails, urban forest  
and open space



# \$105,391

To families in need  
through Share the Fun  
recreation & aquatics grants



# 931

residents\*

Received financial assistance for  
swim lessons, aquatics passes,  
camps, sports, and more

\*City and County residents



# Parks & Recreation

Visit [www.missoulaparks.org/donate](http://www.missoulaparks.org/donate) or phone 721-PARK to donate to Partners In Parks.

Learn more about Friends of Missoula Parks (501c3) at [fmparks.org](http://fmparks.org).

Contact Associate Director [Ryan Applegate](#) at 721-PARK (7275) to learn more about PIP.

Volunteer: Contact [Mike Sharp](#), Outreach/Stewardship Coordinator, at (406) 529-4590.

## PARTNERS IN PARKS VOLUNTEERS

VOLUNTEERMISSOULA.ORG

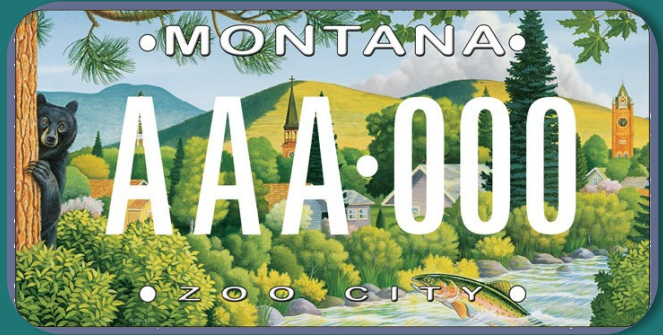
Bancroft Neighborhood Association  
Conservation Lands Program Stewardship Volunteers  
Enterprise  
High Road Edibles  
Marsh McLennan Agency  
Missoula Aging Services  
Missoula Mountain Bike Coalition  
Missoula Prairie Keepers  
Missoula Resists  
Missoula Trail Ambassadors  
Montana Senior Olympics Volunteers  
OnX  
Pineview Ice Rink Volunteers  
Run Wild Missoula  
Trees for Missoula  
University of Montana  
UM Big Sky Experience  
UM Marketing and Communications Department  
Wild Rockies Field Institute  
Parks Fall Family Fest volunteers  
Parks Jr. Playmakers Football and Basketball Coaches  
Parks Kiwanis Basketball Coaches  
Parks Teen-Workrecreation volunteers  
Parks Trail Ambassadors  
Parks ZTD Coaches  
...and many more wonderful groups and individuals! Thank you!

Thanks to everyone who helped informally by picking up litter, watering plants, and supporting conservation—making Missoula a better place to live and play! Contact [Mike Sharp](#), Outreach/Stewardship Coordinator, at (406) 529-4590.

## TREES FOR MISSOULA

Trees for Missoula, a program of Climate Smart Missoula, is committed to the belief that a healthy urban forest is essential to building a livable, climate resilient community. Our goal is to build and sustain an urban forest that benefits the Missoula community. To do this, we plant and prune trees, educate residents about the benefits of urban trees and tree care. Learn more at [treesformissoula.org](https://treesformissoula.org).

## FRIENDS OF MISSOULA PARKS



## STEP UP TO THE PLATE

Since 2013, Partners In Parks license plates have generated **\$130,365** for Recreation and Aquatics grants for families in need.

**2025 PARKS PLATES RAISED \$10,685!**

Get your very own Parks and Recreation license plate today at the [County Treasurer's office](#).

## PARTNERS IN PARKS DONORS

[MISSOULAPARKS.ORG/DONATE](https://MISSOULAPARKS.ORG/DONATE)

### PARKS ALL-STARS \$5000+

Milton & Roselyn Clark

Corner Farm Village

Kiwanis Club

Pepsi Cola of Missoula

Bill Phelps Family

Bryan Tipp

Trust Montana

Tykeson Family Charitable Trust

### PARKS TEAMMATES \$2999 - \$1500

Boyce Lumber

Children's Dentistry of the Rockies

### PARKS FANS \$1499 - \$500

Funk It Coffee and Thrift

James & Susan Brown Revocable Living Trust

Boyce Lumber Co

### PARKS PARTNERS \$499 AND BELOW

Big Dipper Ice Cream

Kembel, Kosena & Company Inc

Jennifer Mayo

Virginia Tribe

Many thanks to our generous community partners.